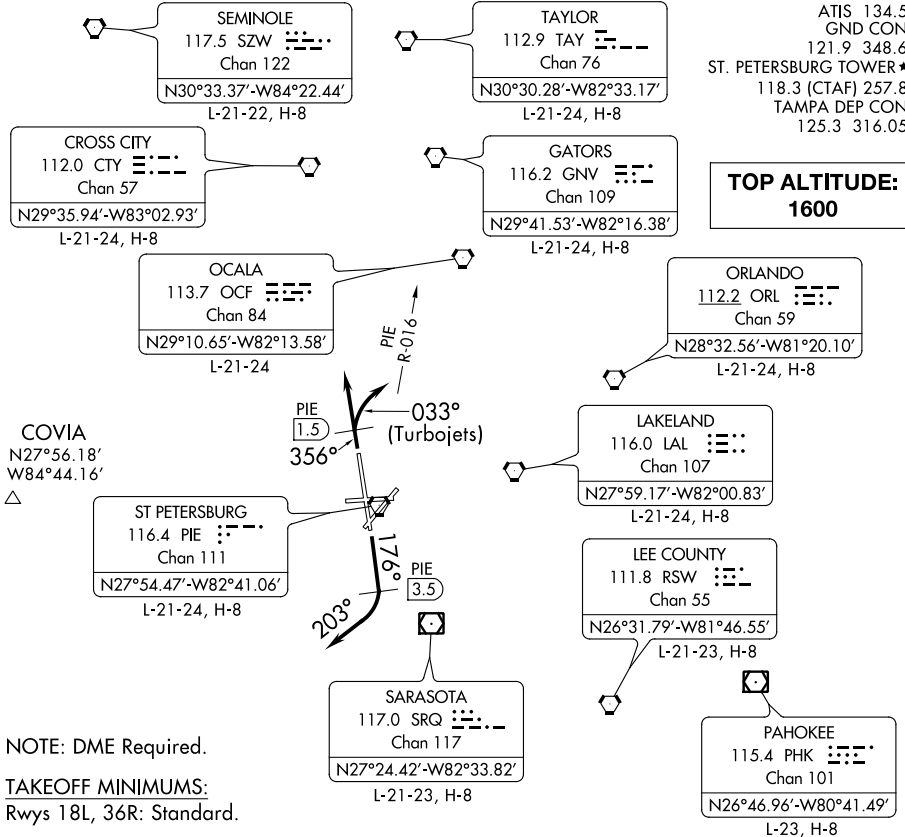


# ST. PETE EIGHT DEPARTURE

ATIS 134.5  
GND CON 121.9 348.6  
ST. PETERSBURG TOWER \* 118.3 (CTAF) 257.8  
TAMPA DEP CON 125.3 316.05

**TOP ALTITUDE:  
1600**



NOTE: DME Required.

**TAKEOFF MINIMUMS:**  
Rwys 18L, 36R: Standard.

### TAKEOFF OBSTACLE NOTES

**Rwy 18L:** Building 689' from DER, 418' right of centerline, 34' AGL/44' MSL. Signs beginning 909' from DER, 98' right of centerline, up to 50' AGL/58' MSL. Poles beginning 970' from DER, 114' right of centerline, up to 51' AGL/58' MSL. Poles beginning 1015' from DER, 103' left of centerline, up to 40' AGL/47' MSL. Sign 1336' from DER, 198' left of centerline, 46' AGL/53' MSL. Tree 2100' from DER, 996' right of centerline, 96' AGL/105' MSL. Antenna on hopper 2583' from DER, 801' right of centerline, 76' AGL/ 89' MSL.

**Rwy 36R:** Boats beginning 646' from DER, 655' left of centerline, up to 25' MSL.

NOTE: Chart not to scale.

### DEPARTURE ROUTE DESCRIPTION

**TAKEOFF RWY 18L:** Climb heading 176° until PIE VORTAC 3.5 DME, then turn right heading 203° or as assigned. Expect RADAR vectors to filed/assigned route, thence. . . .

**TAKEOFF RWY 36R: TURBOJETS** climb heading 356° until PIE VORTAC 1.5 DME, then turn right heading 033° to intercept and fly outbound on PIE R-016, thence. . . .

**ALL OTHERS** fly heading 356° or as assigned. Expect RADAR vectors to filed/assigned route. Thence. . . .

. . . .maintain 1600, expect further clearance to filed altitude 10 minutes after departure.