

NDB PCW <b>423</b>	APP CRS <b>276°</b>	Rwy Idg TDZE Apt Elev	<b>5445</b> <b>588</b> <b>590</b>
-----------------------	------------------------	-----------------------------	---

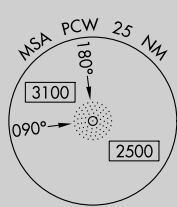
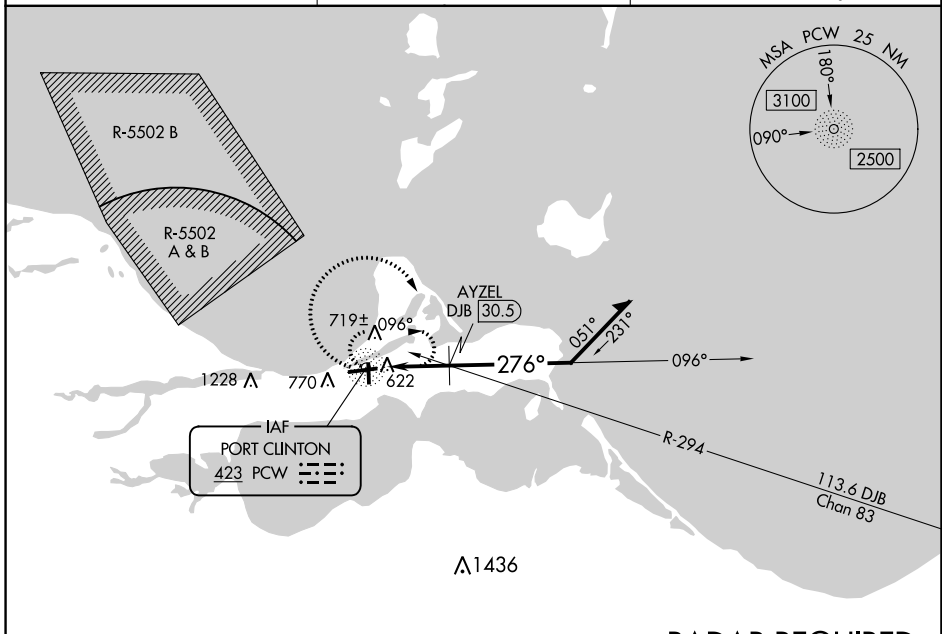
# NDB RWY 27

ERIE-OTTAWA INTL (PCW)

**NA** When local altimeter setting not received, use Toledo Executive altimeter setting and increase all MDA 80 feet and all visibilities ¼ mile. Helicopter visibility reduction below ¾ SM NA.

**MISSED APPROACH:**  
Climbing right turn to 2500 in PCW NDB holding pattern.

AWOS-3 <b>118.775</b>	CLEVELAND APP CON <b>126.35 346.325</b>	UNICOM <b>122.8 (CTAF) 0</b>
--------------------------	--	---------------------------------

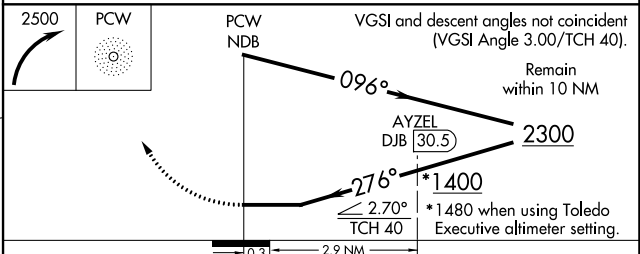
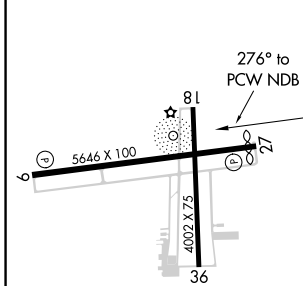


EC-2, 22 FEB 2024 to 21 MAR 2024

EC-2, 22 FEB 2024 to 21 MAR 2024

## RADAR REQUIRED

ELEV 590	TDZE 588
----------	----------



CATEGORY	A	B	C	D
S-27	1400-1 812 (900-1)	1400-1¼ 812 (900-1¼)	1400-2½	812 (900-2½)
<b>C</b> CIRCLING	1400-1 810 (900-1)	1400-1¼ 810 (900-1¼)	1400-2½ 810 (900-2½)	1580-3 990 (1000-3)
AYZEL FIX MINIMUMS (DME REQUIRED)				
S-27	1060-1	472 (500-1)	1060-1⅔	472 (500-1⅔)
<b>C</b> CIRCLING	1140-1	550 (600-1)	1180-1½ 590 (600-1½)	1580-3 990 (1000-3)

HIRL Rwy 9-27 **1**  
MIRL Rwy 18-36 **1**  
REL Rwy 9 and 27 **0**

WAAS CH <b>58012</b> <b>W27A</b>	APP CRS <b>270°</b>	Rwy ldg 5445
		TDZE 588
		Apt Elev 590

# RNAV (GPS) RWY 27

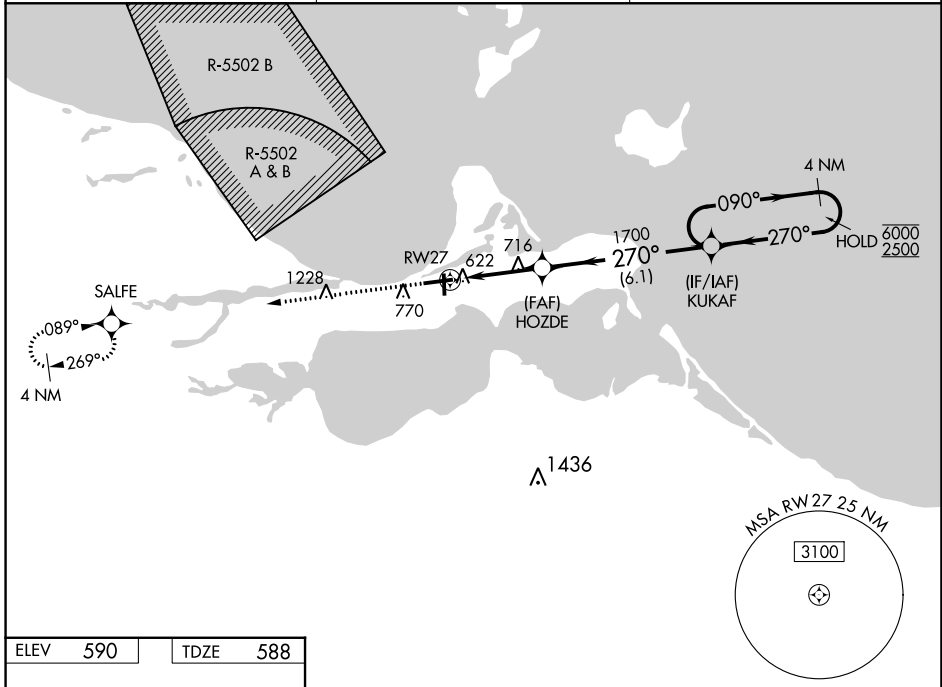
ERIE-OTTAWA INTL (PCW)

RNP APCH - GPS.

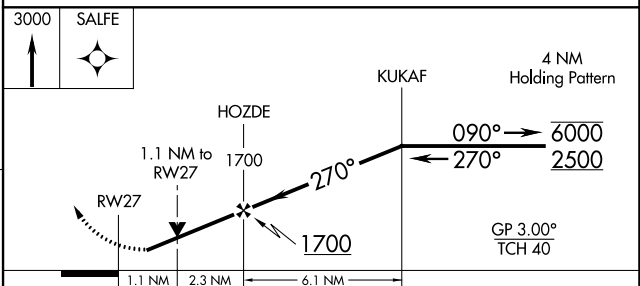
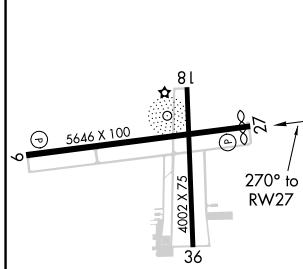
▼ Circling Rwy 18, 36 NA at night. Rwy 27 helicopter visibility reduction below 1 SM NA.  
 ▲ For uncompensated Baro-VNAV systems, LNAV/VNAV NA below -16°C or above 54°C.

MISSED APPROACH:  
 Climb to 3000 direct  
 SALFE and hold.

AWOS-3 <b>118.775</b>	CLEVELAND APP CON <b>126.35 346.325</b>	UNICOM <b>122.8 (CTAF) 1</b>
--------------------------	--	---------------------------------



ELEV 590	TDZE 588
----------	----------



CATEGORY	A	B	C	D
LPV DA		842-1	254 (300-1)	
LNAV/VNAV DA		969-1½		381 (400-1½)
LNAV MDA	980-1	392 (400-1)		980-1½ 392 (400-1½)
<input checked="" type="checkbox"/> CIRCLING	1140-1	550 (600-1)		1180-1½ 1580-3 590 (600-1½) 990 (1000-3)

EC-2, 22 FEB 2024 to 21 MAR 2024

EC-2, 22 FEB 2024 to 21 MAR 2024

APP CRS	Rwy Idg	<b>5646</b>
<b>090°</b>	TDZE	<b>590</b>
	Apt Elev	<b>590</b>

# RNAV (GPS) RWY 9

ERIE-OTTAWA INTL (PCW)

RNP APCH - GPS.

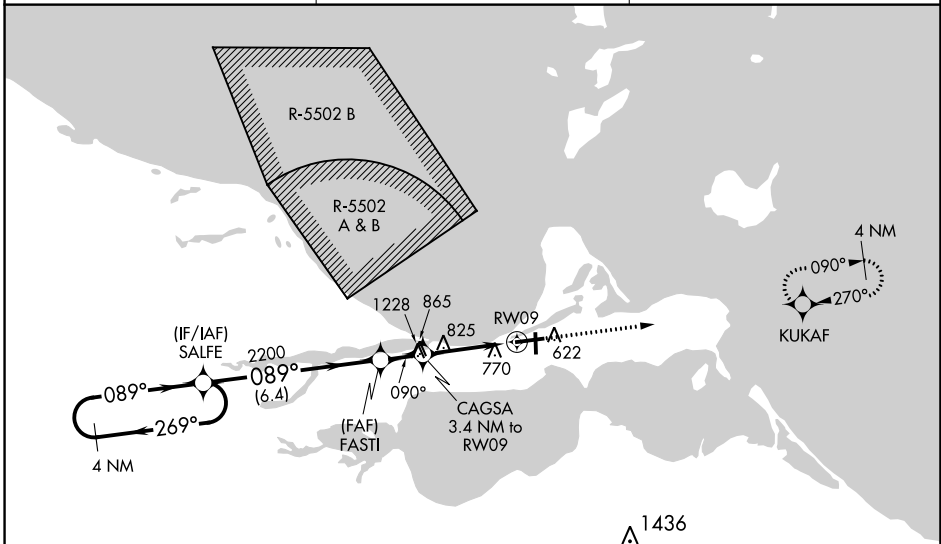
**⚠** When local altimeter setting not received, use Toledo Executive altimeter setting and increase all MDA 80 feet and all Cat C/D visibilities ¼ mile. Rwy 9 helicopter visibility reduction below ¾ SM NA. Circling Rwy 18, 36 NA at night.

**MISSED APPROACH:**  
Climb to 2500 direct KUKAF and hold.

AWOS-3  
**118.775**

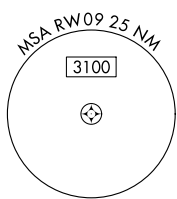
CLEVELAND APP CON  
**126.35 346.325**

UNICOM  
**122.8 (CTAF) 0**

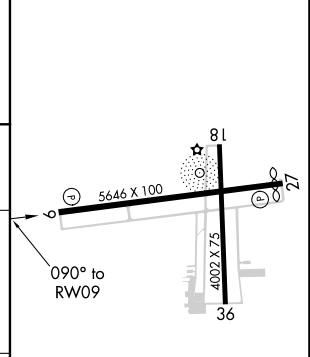
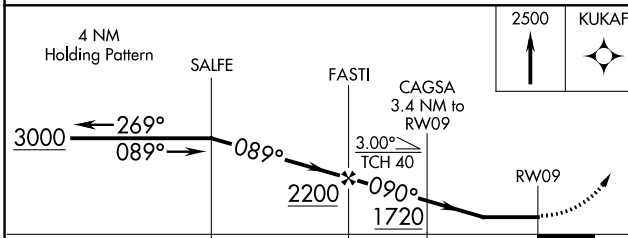


EC-2, 22 FEB 2024 to 21 MAR 2024

EC-2, 22 FEB 2024 to 21 MAR 2024



ELEV 590	TDZE 590
----------	----------



CATEGORY	A	B	C	D
LNVA MDA	1140-1	550 (600-1)	1140-1½	550 (600-1½)
<b>C</b> CIRCLING	1140-1	550 (600-1)	1180-1½ 590 (600-1½)	1580-3 990 (1000-3)

HIRL Rwy 9-27 0  
MIRL Rwy 18-36 0  
REIL Rws 9 and 27 0