

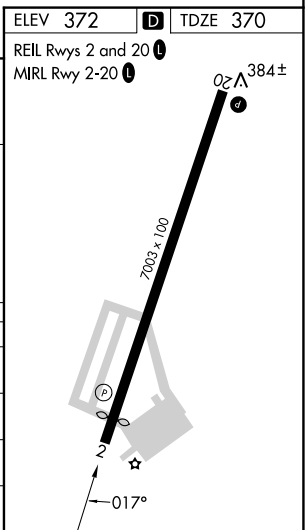
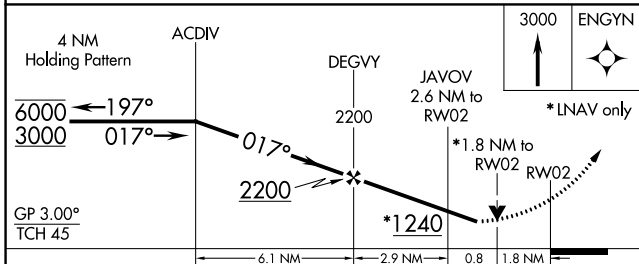
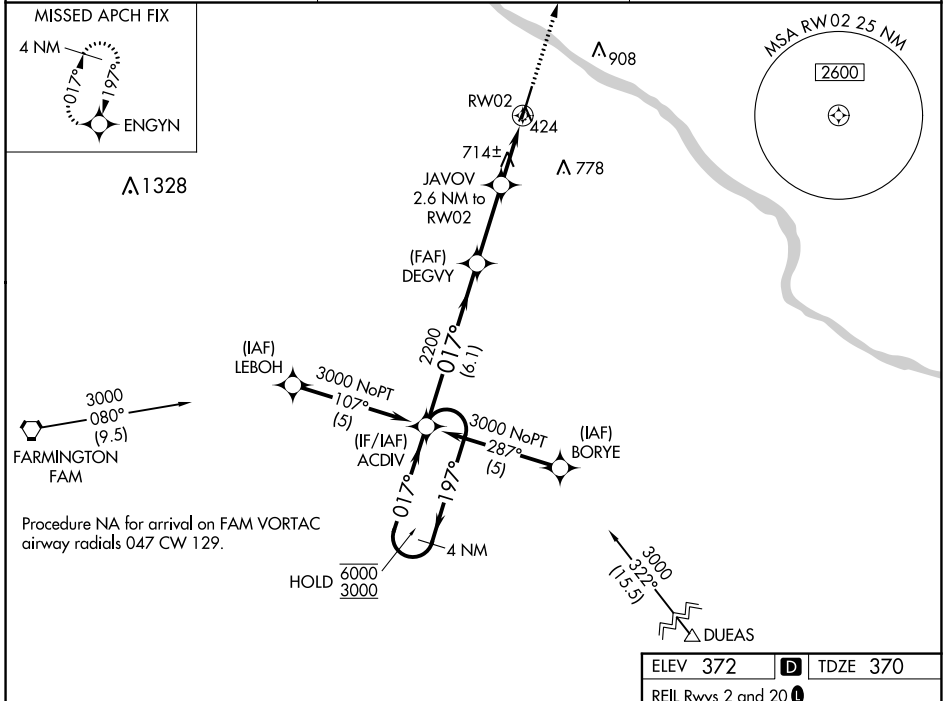
WAAS CH 93618 W02A	APP CRS 017°	Rwy Idg TDZE 370 Apt Elev 372
--	------------------------	---

RNAV (GPS) RWY 2

PERRYVILLE RGNL (PCD)

RNP APCH.	MISSED APPROACH: Climb to 3000 direct ENGYN and hold.
<p>▼ For uncompensated Baro-VNAV systems, procedure NA below ▲ 15°C or above 54°C. Rwy 2 helicopter visibility reduction below 3/4 SM NA.</p>	

AWOS-3PT 118.95	KANSAS CITY CENTER 127.475 346.275	UNICOM 122.8 (CTAF) 0
---------------------------	--	---------------------------------



CATEGORY	A	B	C	D
LPV DA	1123-3		753 (800-3)	
LNAV/VNAV DA	1186-3		816 (900-3)	
LNAV MDA	980-1	610 (700-1)	980-1 3/4	610 (700-1 3/4)
CIRCLING	980-1 608 (700-1)	1000-1 628 (700-1)	1260-2 3/4 888 (900-2 3/4)	1260-3 888 (900-3)

NC-3, 22 FEB 2024 to 21 MAR 2024

NC-3, 22 FEB 2024 to 21 MAR 2024

WAAS CH 53418 W20A	APP CRS 197°	Rwy Idg TDZE 372 Apt Elev 372	6483
--	------------------------	---	-------------

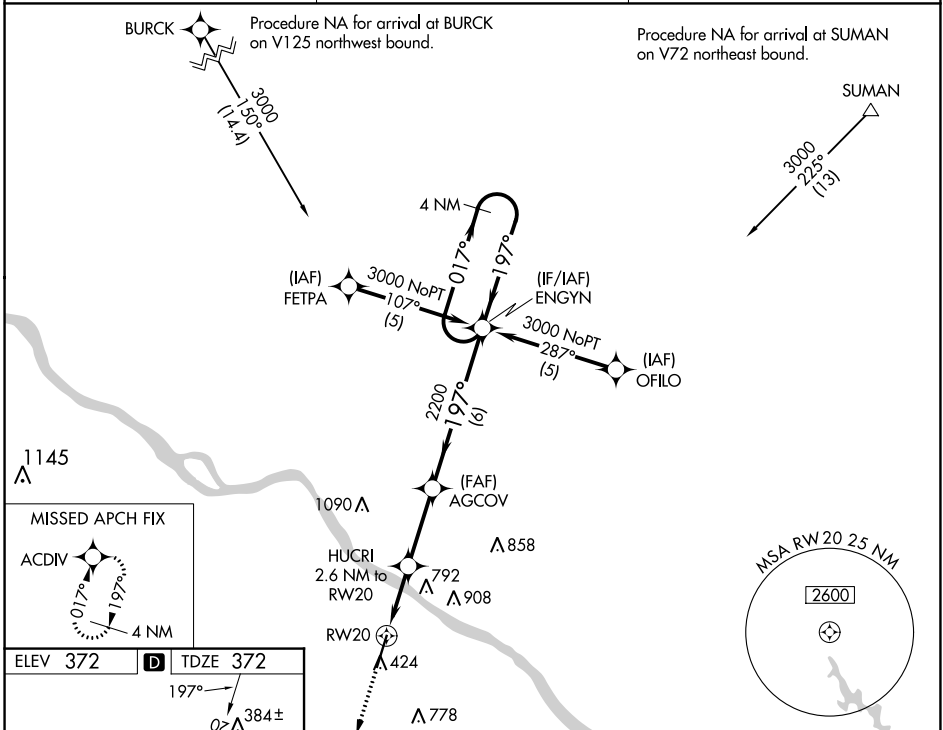
RNAV (GPS) RWY 20

PERRYVILLE RGNL (PCD)

⚠ For uncompensated Baro-VNAV systems, LNAV/VNAV NA below -15°C (5°F) or above 48°C (118°F). DME/DME RNP-0.3 NA.
⚠ Rwy 20 helicopter visibility reduction below ¾ SM NA.

MISSED APPROACH: Climb to 3000 direct ACDIV and hold.

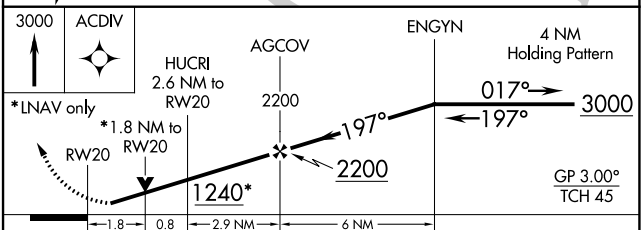
AWOS-3PT 118.95	KANSAS CITY CENTER 127.475 346.275	UNICOM 122.8 (CTAF) ①
---------------------------	--	---------------------------------



NC-3, 22 FEB 2024 to 21 MAR 2024

NC-3, 22 FEB 2024 to 21 MAR 2024

ELEV 372	D	TDZE 372
----------	----------	----------



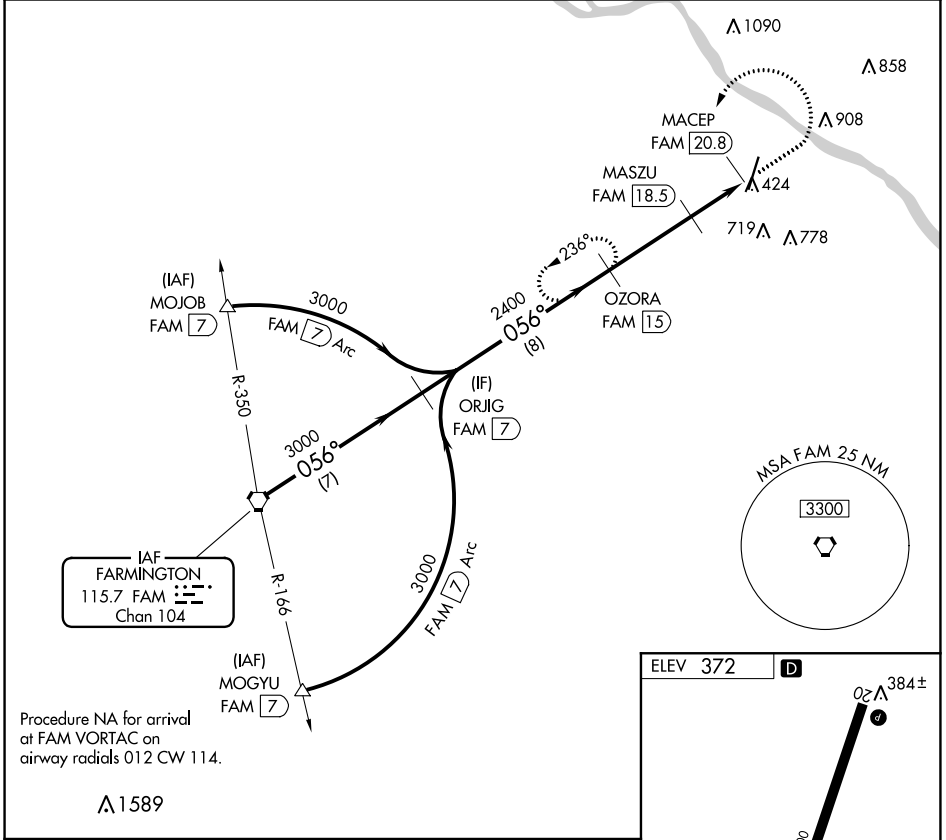
CATEGORY	A	B	C	D
LPV DA	622-1 250 (300-1)			
LNAV/VNAV DA	697-1½ 325 (400-1½)			
LNAV MDA	980-1 608 (700-1)	980-1¾ 608 (700-1¾)		
CIRCLING	980-1 608 (700-1)	1000-1 628 (700-1)	1260-2¾ 888 (900-2¾)	1260-3 888 (900-3)

VORTAC FAM 115.7 Chan 104	APP CRS 056°	Rwy Idg TDZE Apt Elev	N/A N/A 372
---	------------------------	-----------------------------	--

VOR-A
PERRYVILLE RGNL (PCD)

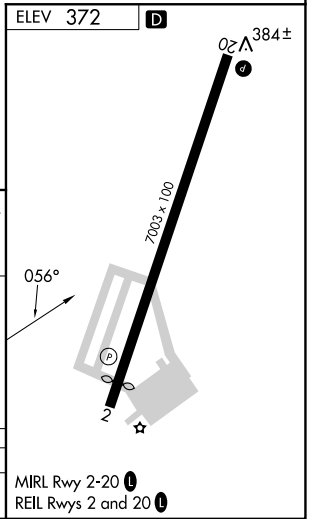
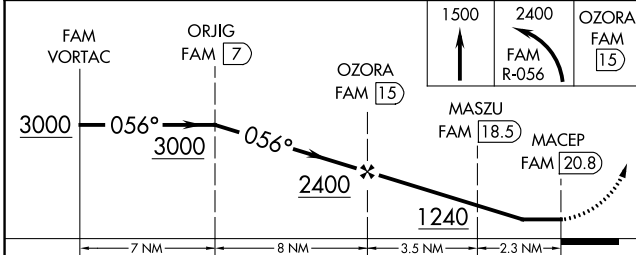
⚠ DME required.	MISSED APPROACH: Climb to 1500 then climbing left turn to 2400 on FAM VORTAC R-056 to OZORA/FAM 15 DME and hold.
------------------------	--

AWOS-3PT 118.95	KANSAS CITY CENTER 127.475 346.275	UNICOM 122.8 (CTAF) Ⓛ
---------------------------	--	--



NC-3, 22 FEB 2024 to 21 MAR 2024

NC-3, 22 FEB 2024 to 21 MAR 2024



CATEGORY	A	B	C	D
CIRCLING	1040-1	668 (700-1)	1260-2 ³ / ₄ 888 (900-2 ³ / ₄)	1260-3 888 (900-3)