

ILS/DME I-PBI 111.9 Chan 56	APP CRS 099°	Rwy Idg 8151 TDZE 16 Apt Elev 20
---	------------------------	---

ILS or LOC RWY 10L

PALM BEACH INTL (PBI)

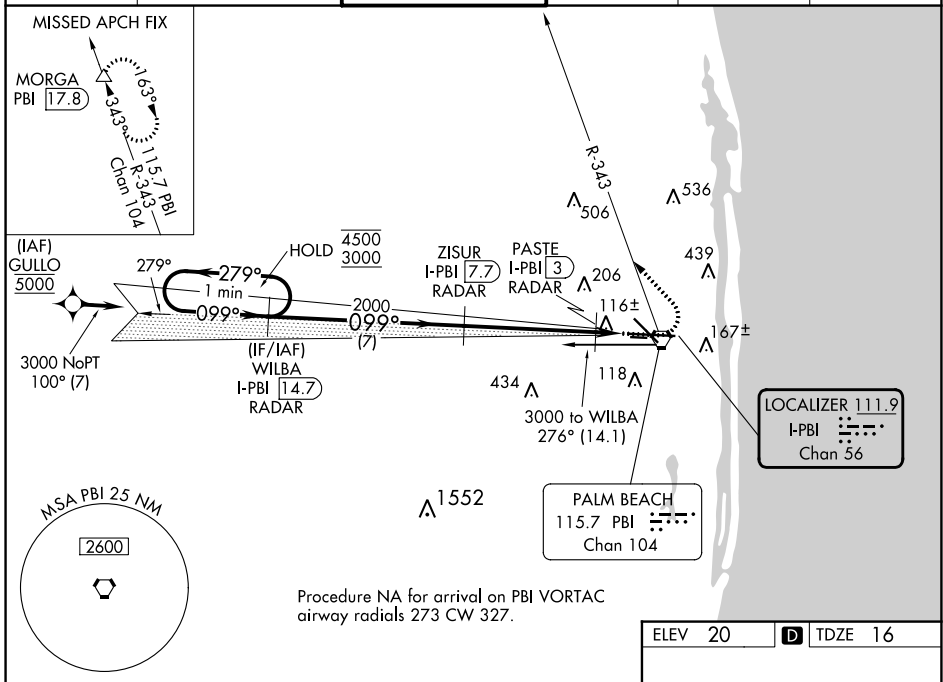
DME required. RNP APCH-GPS. From GULLO.

For inop ALS, increase S-LOC 10L Cat C/D visibility to RVR 5500.
* RVR 1800 authorized with use of FD or AP or HUD to DA.

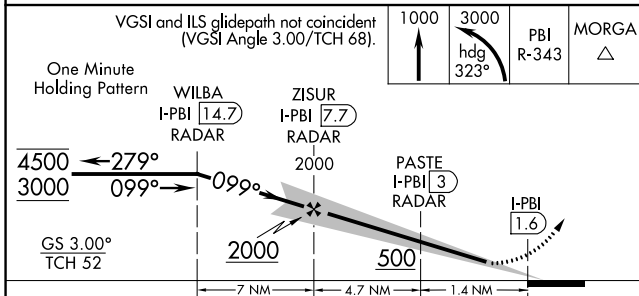
MALSRS

MISSED APPROACH: Climb to 1000 then climbing left turn to 3000 on heading 323° and PBI VORTAC R-343 to MORGA/PBI 17.8 DME and hold.

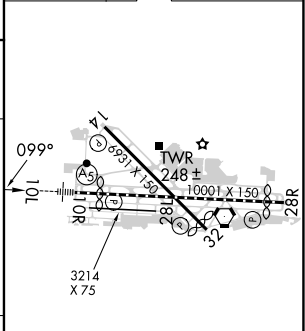
D-ATIS 123.75	PALM BEACH APP CON 128.3 317.4	PALM BEACH TOWER 119.1 257.8	GND CON 121.9 284.6	CLNC DEL 121.6 284.6	CPDLC
-------------------------	--	--	-------------------------------	--------------------------------	-------



Procedure NA for arrival on PBI VORTAC airway radials 273 CW 327.



ELEV 20	TDZE 16
---------	---------



CATEGORY	A	B	C	D
S-ILS 10L *	216/24 200 (200-½)			
S-LOC 10L	380/24 364 (400-½)	380/35 364 (400-¾)		
CIRCLING	560-1 540 (600-1)	740-2 720 (800-2)	780-2½ 760 (800-2½)	

HIRL RWY 10L-28R
REIL RWYS 10R, 14, 28L, 28R and 32
MIRL RWYS 14-32 and 10R-28L

SE-3, 22 FEB 2024 to 21 MAR 2024

SE-3, 22 FEB 2024 to 21 MAR 2024

LOC I-PWB 111.9	APP CRS 279°	Rwy Idg TDZE Apt Elev	8240 18 20
---------------------------	------------------------	-----------------------------	---------------------------------------

ILS or LOC RWY 28R

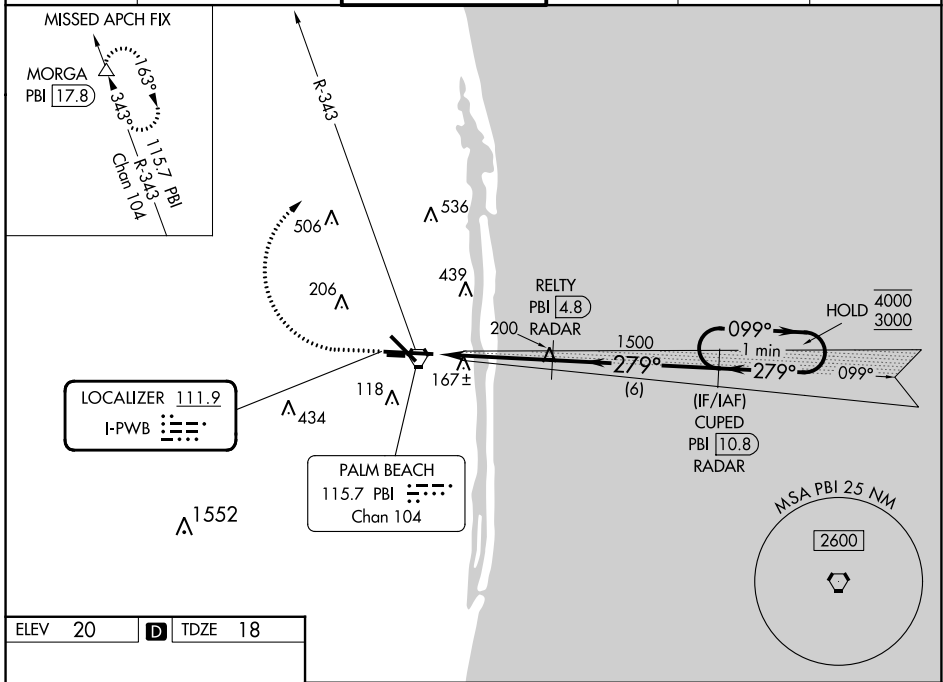
PALM BEACH INTL (PBI)

DME required. RADAR required for procedure entry.

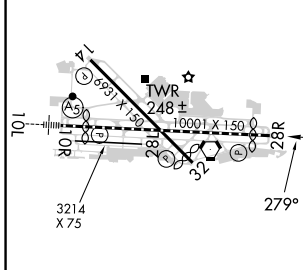
▲

MISSED APPROACH: Climb to 500 then climbing right turn to 3000 on PBI VORTAC R-343 to MORGA/PBI 17.8 DME and hold.

D-ATIS 123.75	PALM BEACH APP CON 128.3 317.4	PALM BEACH TOWER 119.1 257.8	GND CON 121.9 284.6	CLNC DEL 121.6 284.6	CPDLC
-------------------------	--	--	-------------------------------	--------------------------------	-------



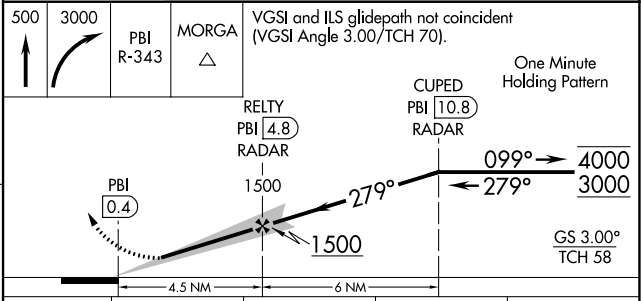
ELEV 20	D	TDZE 18
---------	----------	---------



HIRL Rwy 10L-28R
REIL Rwy 10R, 14, 28L, 28R and 32
MIRL Rwy 14-32 and 10R-28L

FAF to MAP 4.5 NM

Knots	60	90	120	150	180
Min:Sec	4:30	3:00	2:15	1:48	1:30



CATEGORY	A	B	C	D
S-ILS 28R	218/40 200 (200-3/4)			
S-LOC 28R	460/55	442 (500-1)	460-1 3/8	442 (500-1 3/8)
C CIRCLING	560-1	540 (600-1)	740-2 720 (800-2)	780-2 1/2 760 (800-2 1/2)

SE-3, 22 FEB 2024 to 21 MAR 2024

SE-3, 22 FEB 2024 to 21 MAR 2024

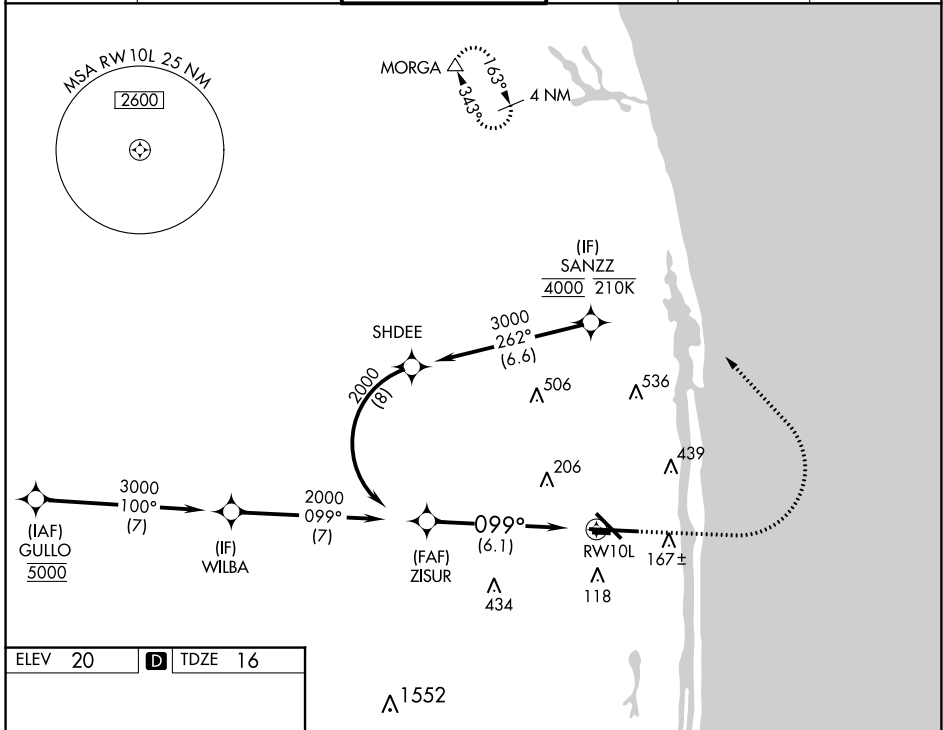
APP CRS	Rwy Idg	8151
099°	TDZE	16
	Apt Elev	20

RNAV (RNP) Z RWY 10L

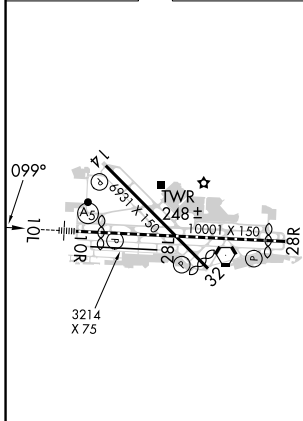
PALM BEACH INTL (PBI)

RNP AR APCH - GPS.	MALSR	MISSED APPROACH: Climb to 1000 then climbing left turn to 3000 direct MORGA and hold.
For uncompensated Baro-VNAV systems, procedure NA below 6°C or above 54°C.		

D-ATIS	PALM BEACH APP CON	PALM BEACH TOWER	GND CON	CLNC DEL	CPDLC
123.75	128.3 317.4	119.1 257.8	121.9 284.6	121.6 284.6	



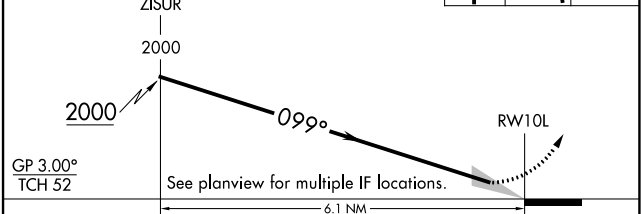
ELEV 20	D	TDZE 16
---------	----------	---------



HIRL Rwy 10L-28R
 REIL Rws 10R, 14, 28L, 28R and 32
 MIRL Rws 14-32 and 10R-28L

VGSI and RNAV glidepath not coincident (VGSI Angle 3.00/TCH 68).

1000	3000	MORGA



CATEGORY	A	B	C	D
RNP 0.30 DA	355/26 339 (400-1/2)			

AUTHORIZATION REQUIRED

SE-3, 22 FEB 2024 to 21 MAR 2024

SE-3, 22 FEB 2024 to 21 MAR 2024

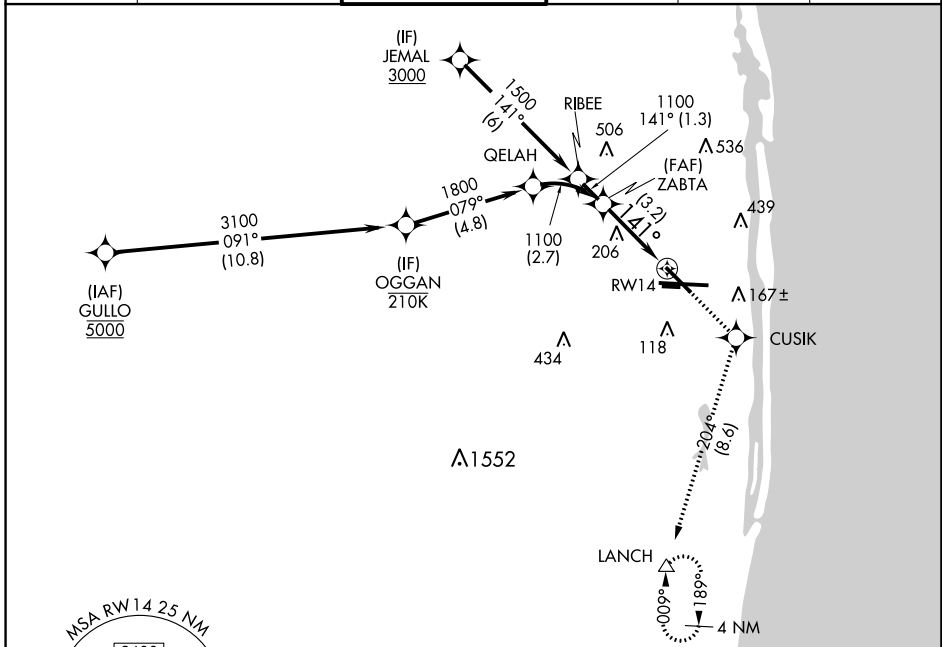
APP CRS	Rwy Idg	6000
141°	TDZE	17
	Apt Elev	20

RNAV (RNP) Z RWY 14

PALM BEACH INTL (PBI)

RNP AR APCH - GPS.		MISSED APPROACH: Climb to 2000 direct CUSIK and on track 204 to LANCH and hold.			
▼ For uncompensated Baro-VNAV systems, procedure NA below 6°C or above 54°C.					

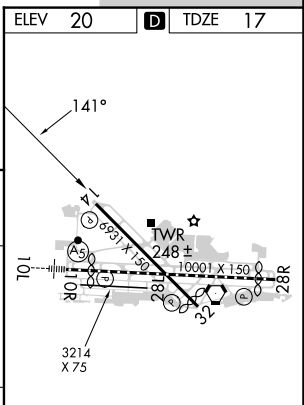
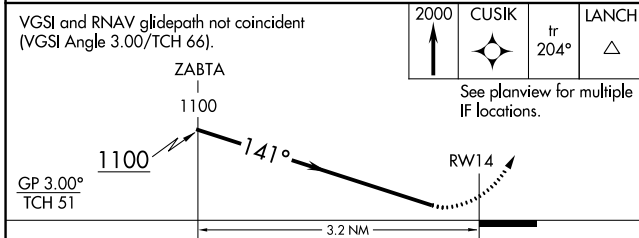
D-ATIS	PALM BEACH APP CON	PALM BEACH TOWER	GND CON	CLNC DEL	CPDLC
123.75	128.3 317.4	119.1 257.8	121.9 284.6	121.6 284.6	



SE-3, 22 FEB 2024 to 21 MAR 2024

SE-3, 22 FEB 2024 to 21 MAR 2024

ELEV 20	TDZE 17
---------	---------



CATEGORY	A	B	C	D
RNP 0.30 DA		354-1	337 (400-1)	

AUTHORIZATION REQUIRED

HIRL Rwy 10L-28R
 REIL Rwys 10R, 14, 28L, 28R and 32
 MIRL Rwys 14-32 and 10R-28L

APP CRS	Rwy Idg	8240
279°	TDZE	18
	Apt Elev	20

RNAV (RNP) Z RWY 28R

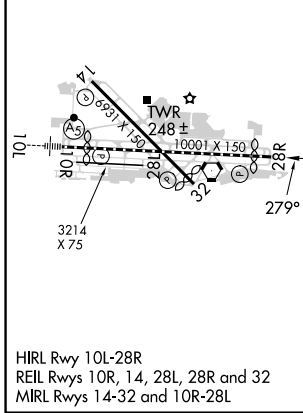
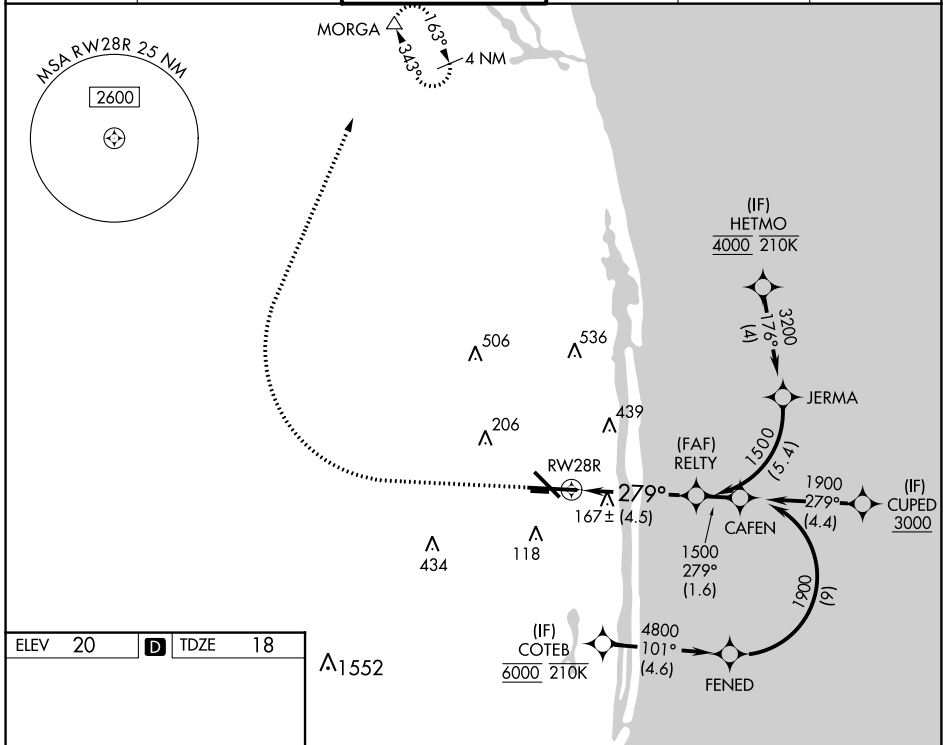
PALM BEACH INTL (PBI)

RNP AR APCH - GPS.

▼ For uncompensated Baro-VNAV systems, procedure NA below 6°C or above 54°C.

MISSED APPROACH: Climb to 500 then climbing right turn to 3000 direct MORGA and hold.

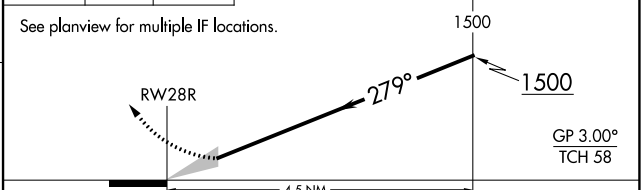
D-ATIS 123.75	PALM BEACH APP CON 128.3 317.4	PALM BEACH TOWER 119.1 257.8	GND CON 121.9 284.6	CLNC DEL 121.6 284.6	CPDLC
-------------------------	--	--	-------------------------------	--------------------------------	-------



500 3000 MORGA

↑ ↪ △

VGSI and RNAV glidepath not coincident (VGSI Angle 3.00°/TCH 70).



CATEGORY	A	B	C	D
RNP 0.30 DA	404/60 386 (400-1¼)			

AUTHORIZATION REQUIRED

SE-3, 22 FEB 2024 to 21 MAR 2024

SE-3, 22 FEB 2024 to 21 MAR 2024

APP CRS	Rwy Idg	6513
321°	TDZE	16
	Apt Elev	20

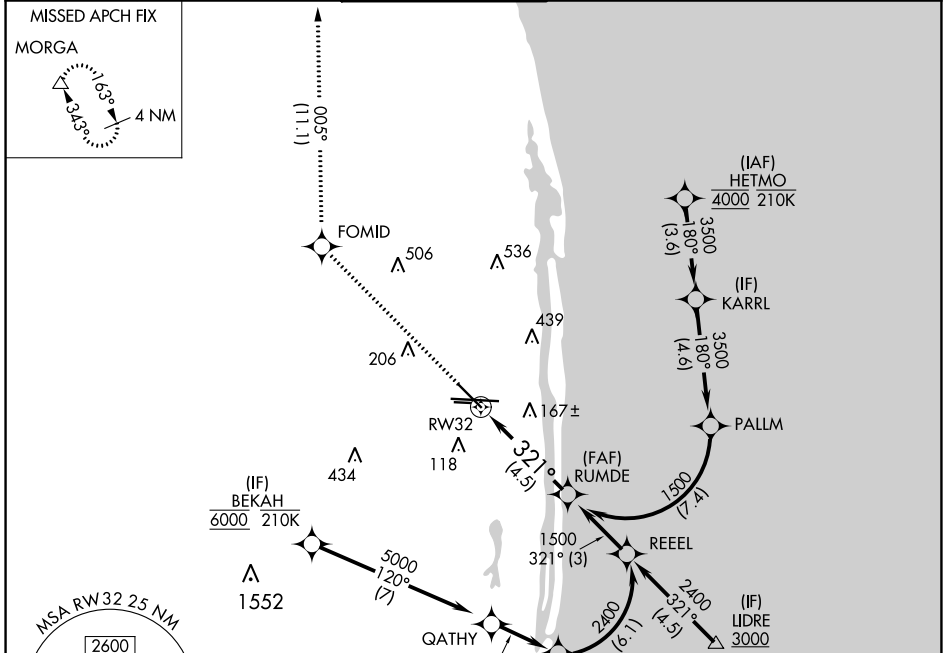
RNAV (RNP) Z RWY 32

PALM BEACH INTL (PBI)

RNP AR APCH - GPS.
 For uncompensated Baro-VNAV systems, procedure NA below 6°C or above 54°C.

MISSED APPROACH: Climb to 3000 direct FOMID and on track 005° to MORGA and hold.

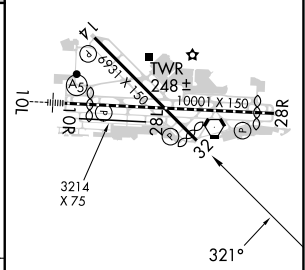
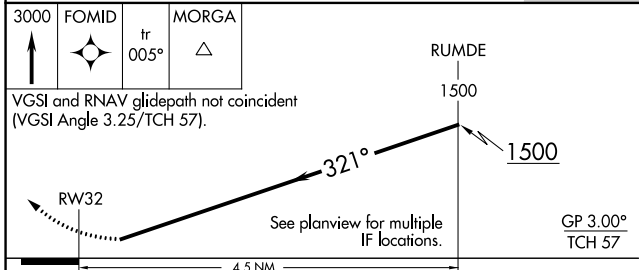
D-ATIS	PALM BEACH APP CON	PALM BEACH TOWER	GND CON	CLNC DEL	CPDLC
123.75	128.3 317.4	119.1 257.8	121.9 284.6	121.6 284.6	



SE-3, 22 FEB 2024 to 21 MAR 2024

SE-3, 22 FEB 2024 to 21 MAR 2024

ELEV	20	TDZE	16
------	----	------	----



CATEGORY	A	B	C	D
RNP 0.11 DA		322-7/8	306 (400-7/8)	
RNP 0.30 DA		376-1	360 (400-1)	

AUTHORIZATION REQUIRED

HIRL Rwy 10L-28R
 REIL Rwy 10R, 14, 28L, 28R and 32
 MIRL Rwy 14-32 and 10R-28L

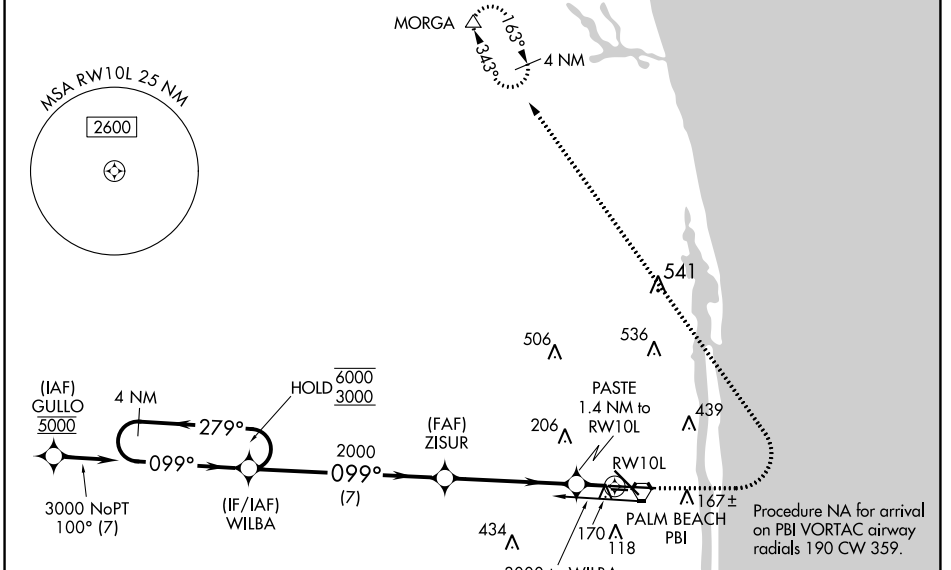
WAAS CH 97317 W10A	APP CRS 099°	Rwy Idg 8151 TDZE 16 Apt Elev 20
--	------------------------	---

RNAV (GPS) Y RWY 10L

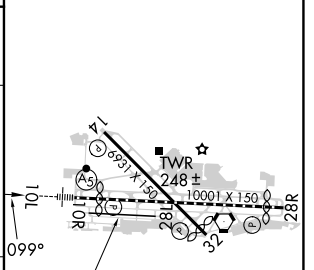
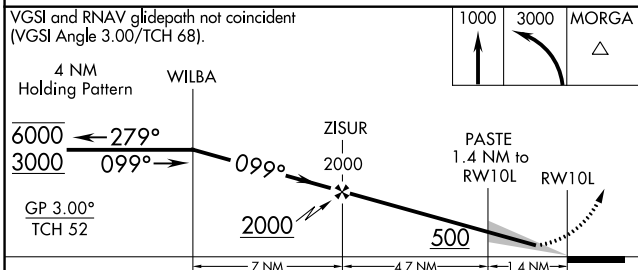
PALM BEACH INTL (PBI)

RNP APCH - GPS.		MALSR 	MISSED APPROACH: Climb to 1000 then climbing left turn to 3000 direct MORGA and hold.
<p>⚠ For uncompensated Baro-VNAV systems, LNAV/VNAV NA below 6°C or above 54°C. For inop ALS, increase LNAV/VNAV all Cats visibility to RVR 5500 and increase LNAV Cats C/D visibility to RVR 6000. # RVR 1800 authorized with use of FD or AP or HUD to DA.</p>			

D-ATIS 123.75	PALM BEACH APP CON 128.3 317.4	PALM BEACH TOWER 119.1 257.8	GND CON 121.9 284.6	CLNC DEL 121.6 284.6	CPDLC
-------------------------	--	--	-------------------------------	--------------------------------	-------



ELEV 20	D TDZE 16
---------	------------------



CATEGORY	A	B	C	D
LPV DA #	216/24		200 (200-½)	
LNAV/VNAV DA	392/35		376 (400-¾)	
LNAV MDA	420/24 404 (400-½)		420/40 404 (400-¾)	
C CIRCLING	560-1	540 (600-1)	740-2 720 (800-2)	780-2½ 760 (800-2½)

HIRL Rwy 10L-28R
REIL Rwy 10R, 14, 28L, 28R and 32
MIRL Rwy 14-32 and 10R-28L

SE-3, 22 FEB 2024 to 21 MAR 2024

SE-3, 22 FEB 2024 to 21 MAR 2024

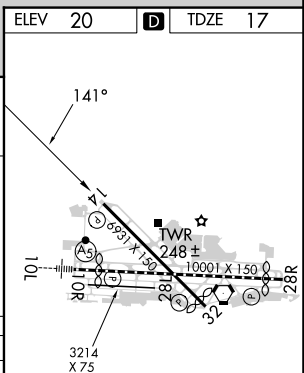
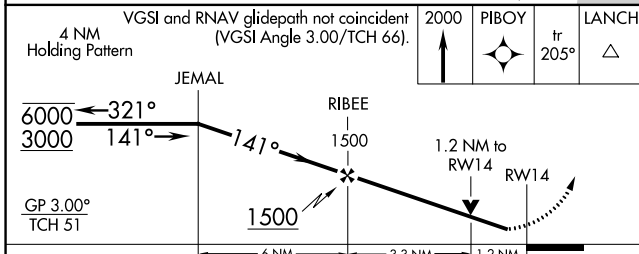
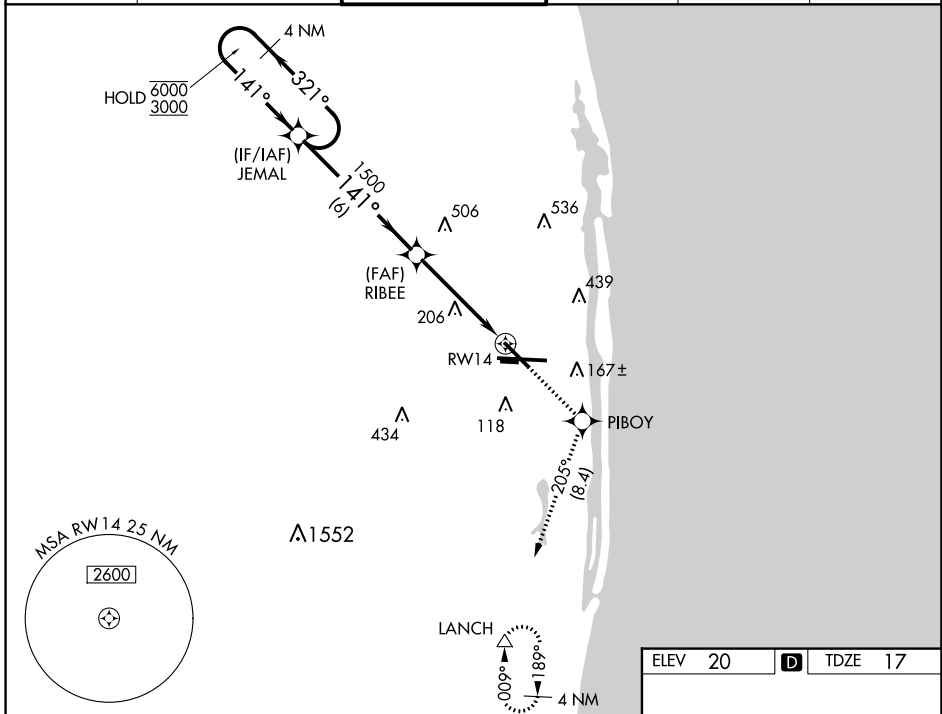
WAAS CH 40018 W14A	APP CRS 141°	Rwy Idg TDZE Apt Elev	6000 17 20
--	------------------------	-----------------------------	---------------------------------------

RNAV (GPS) Y RWY 14

PALM BEACH INTL (PBI)

RNP APCH - GPS.		MISSED APPROACH: Climb to 2000 direct PIBOY and on track 205° to LANCH and hold.	
<p>▼ Rwy 14 helicopter visibility reduction below 3/4 SM NA. For uncompensated Baro-VNAV systems, LNAV/VNAV NA below 6°C or above 54°C.</p> <p>▲</p>			

D-ATIS 123.75	PALM BEACH APP CON 128.3 317.4	PALM BEACH TOWER 119.1 257.8	GND CON 121.9 284.6	CLNC DEL 121.6 284.6	CPDLC
-------------------------	--	--	-------------------------------	--------------------------------	-------



CATEGORY	A	B	C	D
LPV DA		269-3/4	252 (300-3/4)	
LNAV/VNAV DA		338-1	321 (400-1)	
LNAV MDA	460-1	443 (500-1)	460-1 3/8	443 (500-1 3/8)
C CIRCLING	560-1	540 (600-1)	740-2 720 (800-2)	780-2 1/2 760 (800-2 1/2)

HIRL Rwy 10L-28R
REIL Rwy 10R, 14, 28L, 28R and 32
MIRL Rwy 14-32 and 10R-28L

SE-3, 22 FEB 2024 to 21 MAR 2024

SE-3, 22 FEB 2024 to 21 MAR 2024

WAAS CH 45518 W28A	APP CRS 279°	Rwy Idg 8240 TDZE 18 Apt Elev 20
--	------------------------	---

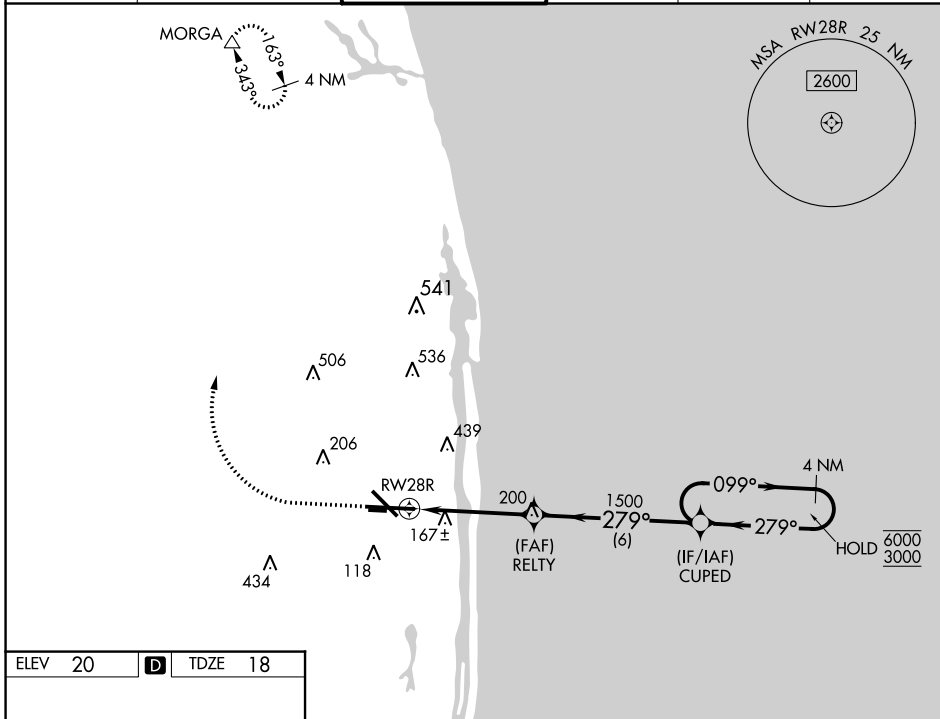
RNAV (GPS) Y RWY 28R

PALM BEACH INTL (PBI)

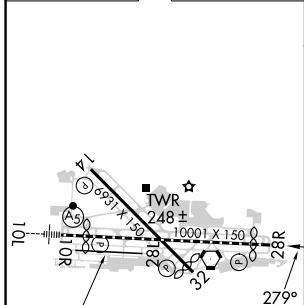
RNP APCH - GPS.
 ⚠ For uncompensated Baro-VNAV systems, procedure NA below 6°C or above 54°C.

MISSED APPROACH: Climb to 500 then climbing right turn to 3000 direct MORGA and hold.

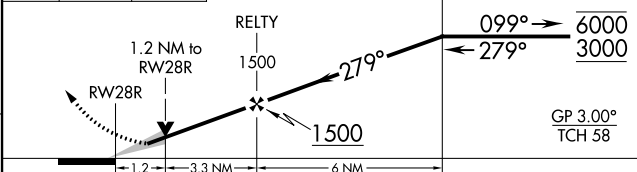
D-ATIS 123.75	PALM BEACH APP CON 128.3 317.4	PALM BEACH TOWER 119.1 257.8	GND CON 121.9 284.6	CLNC DEL 121.6 284.6	CPDLC
-------------------------	--	--	-------------------------------	--------------------------------	-------



ELEV 20	D	TDZE 18
---------	----------	---------



500 3000 MORGA VGSi and RNAV glidepath not coincident (VGSi Angle 3.00/TCH 70). 4 NM Holding Pattern



CATEGORY	A	B	C	D
LPV DA		218/40	200 (200-¾)	
LNAV/VNAV DA		342/50	324 (400-1)	
LNAV MDA	460/55	442 (500-1)	460-1⅓	442 (500-1⅓)
C CIRCLING	560-1	540 (600-1)	740-2 720 (800-2)	780-2½ 760 (800-2½)

HIRL Rwy 10L-28R
 REIL Rwys 10R, 14, 28L, 28R and 32
 MIRL Rwys 14-32 and 10R-28L

SE-3, 22 FEB 2024 to 21 MAR 2024

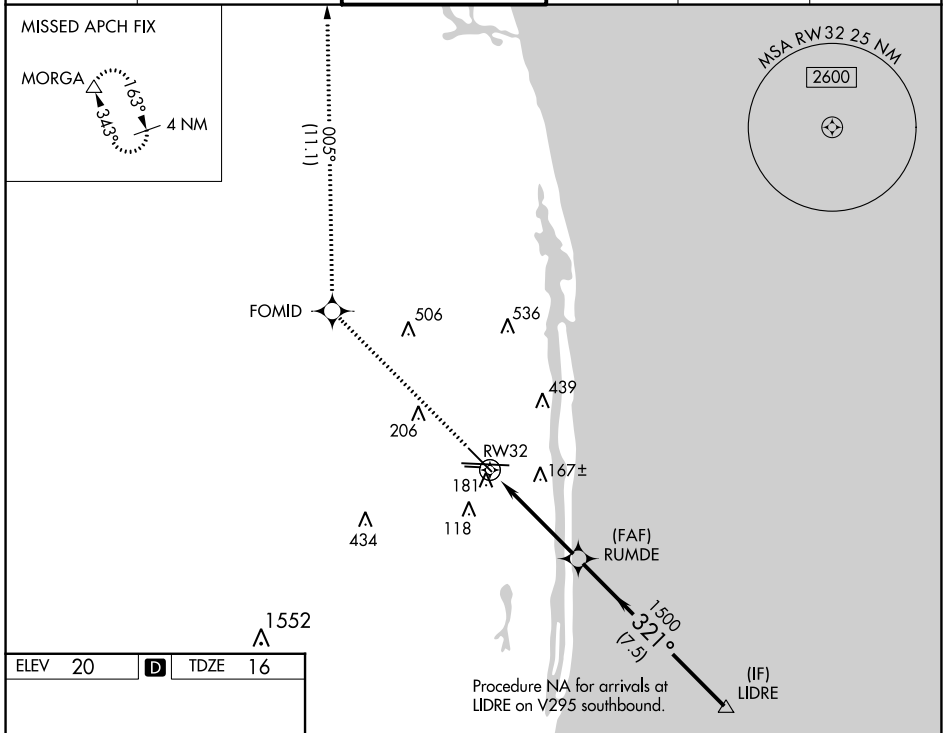
SE-3, 22 FEB 2024 to 21 MAR 2024

WAAS CH 62903 W32A	APP CRS 321°	Rwy Idg 6513 TDZE 16 Apt Elev 20
--	------------------------	---

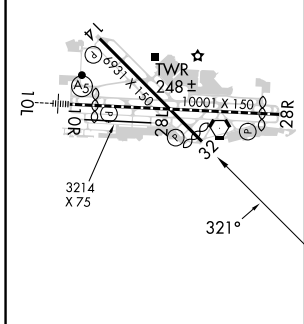
RNAV (GPS) Y RWY 32

PALM BEACH INTL (PBI)

RNP APCH - GPS.			MISSED APPROACH: Climb to 3000 direct FOMID and on track 005° to MORGA and hold.		
<p>▼ Circling to Rwy 10L NA at night. Rwy 32 helicopter visibility reduction below 3/4 SM NA. ▲ For uncompensated Baro-VNAV systems, LNAV/VNAV NA below 6°C or above 54°C.</p>					
D-ATIS 123.75	PALM BEACH APP CON 128.3 317.4	PALM BEACH TOWER 119.1 257.8	GND CON 121.9 284.6	CLNC DEL 121.6 284.6	CPDLC

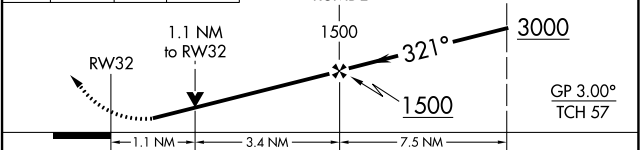


ELEV 20	D	TDZE 16
---------	----------	---------



HIRL Rwy 10L-28R
 REIL Rwys 10R, 14, 28L, 28R and 32
 MIRL Rwys 14-32 and 10R-28L

3000	FOMID \diamond	tr 005°	MORGA \triangle	VGSI and RNAV glidepath not coincident (VGSI Angle 3.25/TCH 57).
------	------------------	---------	-------------------	--



CATEGORY	A	B	C	D
LPV DA		266-3/4	250 (300-3/4)	
LNAV/VNAV DA		342-1	326 (400-1)	
LNAV MDA	440-1	424 (500-1)	440-1 1/4	424 (500-1 1/4)
C CIRCLING	560-1	540 (600-1)	740-2 720 (800-2)	780-2 1/2 760 (800-2 1/2)

SE-3, 22 FEB 2024 to 21 MAR 2024

SE-3, 22 FEB 2024 to 21 MAR 2024