

LOC I-PBF 111.7	APP CRS 178°	Rwy Idg 5998
		TDZE 206
		Apt Elev 206

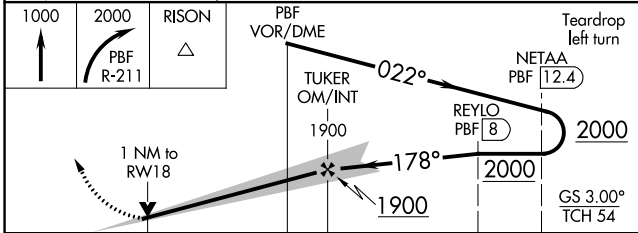
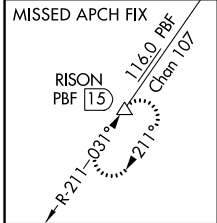
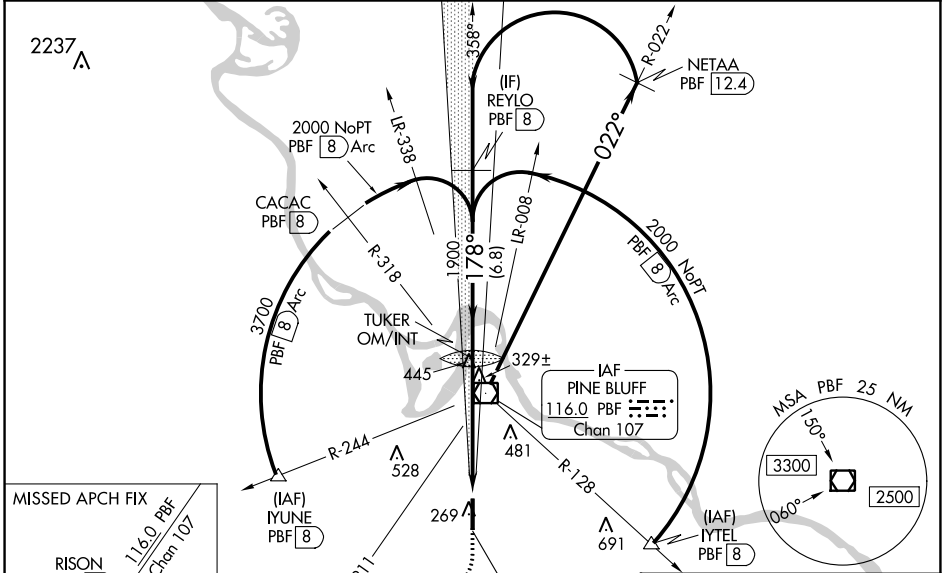
ILS or LOC RWY 18
PINEBLUFF RGNL/GRIDER FLD (PBF)

DME required.

NA Rwy 18 helicopter visibility reduction below 3/4 SM NA. Inop table does not apply to S-ILS 18. For inop ALS, increase S-LOC 18 all Cats visibility to 1 SM. For inop ALS when using Stuttgart altimeter setting, increase S-LOC 18 Cat A/B visibility to 1 SM. DME from PBF VOR/DME. DME requires simultaneous reception of I-PBF and PBF DME. When local altimeter setting not received, use Stuttgart altimeter setting; increase DA to 541 feet and all MDA 80 feet; increase S-LOC 18 Cat C/D visibility 1/2 SM and Circling Cats C/D visibility 1/4 SM. Autopilot coupled approach NA below 900.

MALSR
 MISSED APPROACH: Climb to 1000 then climbing right turn to 2000 on PBF VOR/DME R-211 to RISON/PBF 15 DME and hold.

ASOS 120.775	LITTLE ROCK APP CON 119.85 353.6	CLNC DEL 119.85	UNICOM 123.0 (CTAF)
------------------------	--	---------------------------	-------------------------------



ELEV 206	TDZE 206
178°	
FAF to MAP 5.1 NM	
CIRCLING	660-1 454 (500-1)
	680-1 474 (500-1)
	840-1 3/4 634 (700-1 3/4)
	880-2 1/4 674 (700-2 1/4)
	60 90 120 150 180
	Min:Sec 5:06 3:24 2:33 2:02 1:42

CATEGORY	A	B	C	D
S-ILS 18		466-3/4	260 (300-3/4)	
S-LOC 18		580-3/4	374 (400-3/4)	

SC-1, 22 FEB 2024 to 21 MAR 2024

SC-1, 22 FEB 2024 to 21 MAR 2024

WAAS CH 40420 W18A	APP CRS 178°	Rwy Idg TDZE 206 Apt Elev 206	5998
--	------------------------	---	-------------

RNAV (GPS) RWY 18

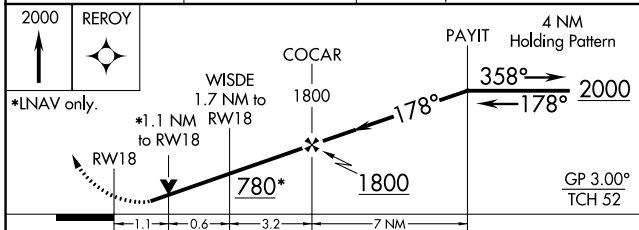
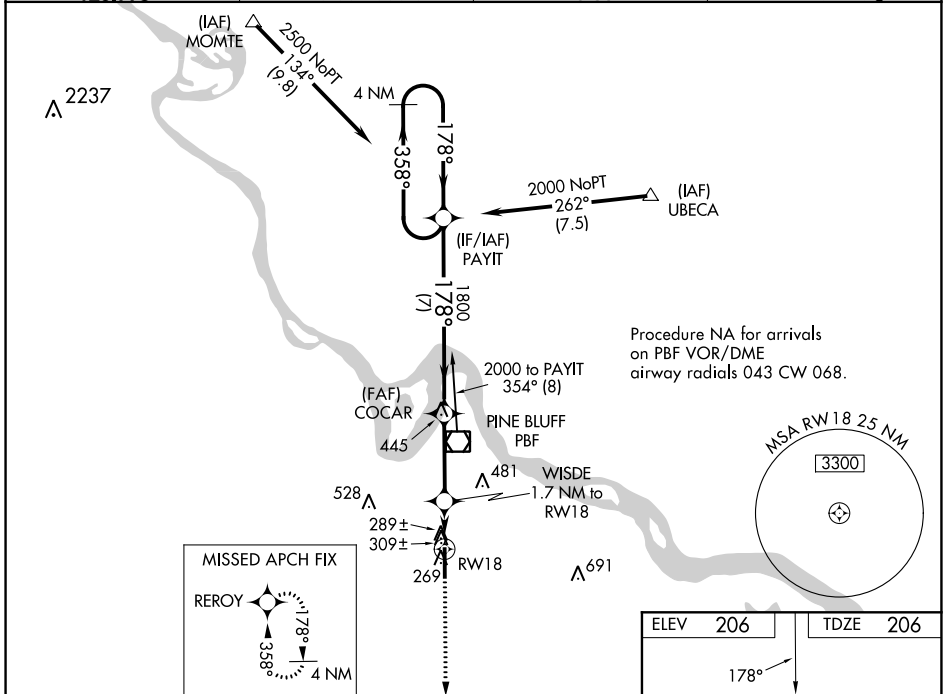
PINEBLUFF RGNL/GRIDER FLD (PBF)

Inop table does not apply to LPV. Baro-VNAV and VDP NA when using Stuttgart altimeter setting. For uncompensated Baro-VNAV systems, LNAV/VNAV NA below -1.5°C (5°F) or above 42°C (107°F). DME/DME RNP-0.3 NA. Rwy 18 helicopter visibility reduction below ¾ SM NA. When local altimeter setting not received, use Stuttgart altimeter setting; increase LPV DA to 534 feet; increase LNAV/VNAV DA to 723 feet and visibility all Cats ¼ SM; increase all MDA 80 feet and LNAV C/D and Circling C/D visibility ¼ SM. For inop MALSRS increase LNAV C/A/B visibility to 1 and C/D visibility to 1½. For inop MALSRS when using Stuttgart altimeter setting, increase LPV visibility all Cats ¼ mile, increase LNAV visibility C/A/B ¼ mile and C/D ⅜ mile.

MALSRS

MISSED APPROACH:
Climb to 2000 direct REROY and hold.

ASOS 120.775	LITTLE ROCK APP CON 119.85 353.6	CLINC DEL 119.85	UNICOM (CTAF) 123.0
------------------------	--	----------------------------	----------------------------



CATEGORY	A	B	C	D
LPV DA		459-¾	253 (300-¾)	
LNAV/VNAV DA		648-1	442 (500-1)	
LNAV MDA		600-¾	394 (400-¾)	
CIRCLING	660-1 454 (500-1)	680-1 474 (500-1)	840-1¾ 634 (700-1¾)	880-2¼ 674 (700-2¼)

ELEV 206 TDZE 206

178°

81

501 X 8665

36

MIRL Rwy 18-36

SC-1, 22 FEB 2024 to 21 MAR 2024

SC-1, 22 FEB 2024 to 21 MAR 2024

WAAS CH 86620	APP CRS W36A	Rwy Idg TDZE Apt Elev	5998 202 206
-------------------------	------------------------	-----------------------------	---

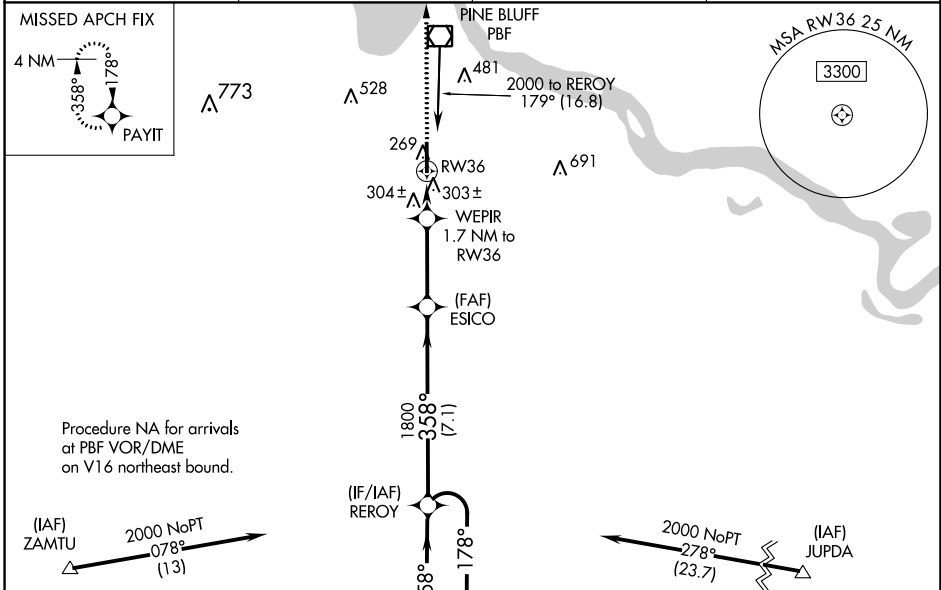
RNAV (GPS) RWY 36

PINEBLUFF RGNL/GRIDER FLD (PBF)

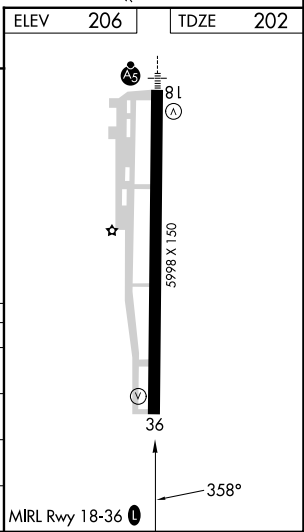
Baro-VNAV NA when using Stuttgart altimeter setting. For uncompensated Baro-VNAV systems, LNAV/VNAV NA below -15°C or above 42°C. DME/DME RNP-0.3 NA. When local altimeter setting not received, use Stuttgart altimeter setting; increase LPV DA to 527 feet; increase LNAV/VNAV DA to 562 feet and visibility all Cats ½ SM; increase all MDA 80 feet and LNAV and Circling visibility Cats C/D ¼ SM.

MISSED APPROACH:
Climb to 2000 direct PAYIT and hold.

ASOS 120.775	LITTLE ROCK APP CON 119.85 353.6	CLNC DEL 119.85	UNICOM 123.0 (CTAF)
------------------------	--	---------------------------	-------------------------------



2000	PAYIT	REROY	4 NM Holding Pattern
*LNAV only.	WEPIR 1.7 NM to RW36	ESICO 1800	REROY 2000
		1800	178°
		358°	358°
		GP 3.00° TCH 52	
		1.7 NM	3.2 NM
		7.1 NM	
CATEGORY	A	B	C
LPV DA	452-1 250 (300-1)		
LNAV/VNAV DA	487-1 285 (300-1)		
LNAV MDA	600-1	398 (400-1)	600-1 3/8 398 (400-1 1/8)
CIRCLING	660-1 454 (500-1)	680-1 474 (500-1)	840-1 3/4 634 (700-1 3/4) 880-2 1/4 674 (700-2 1/4)



SC-1, 22 FEB 2024 to 21 MAR 2024

SC-1, 22 FEB 2024 to 21 MAR 2024