

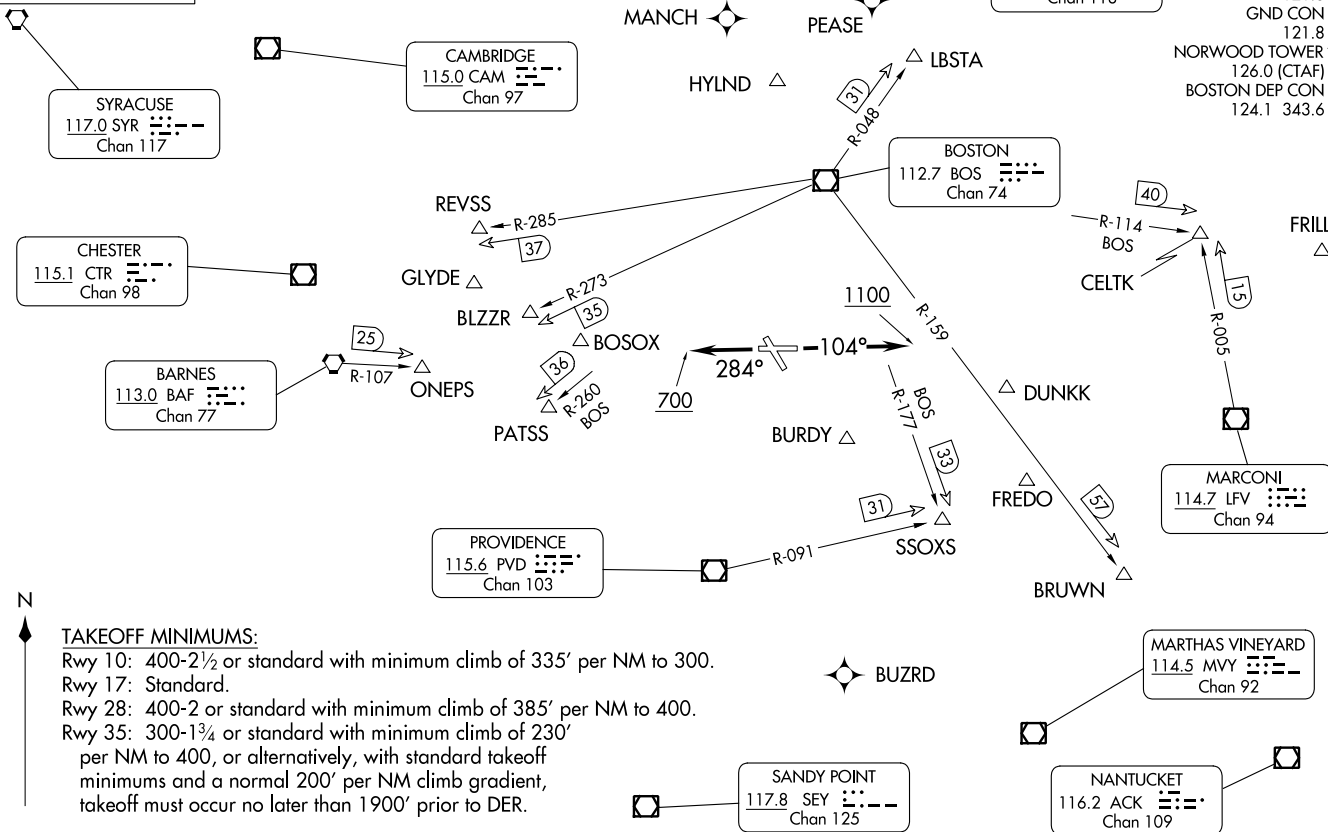
NORWOOD FOUR DEPARTURE  
(OWD4.OWD) 23FEB23

NORWOOD, MASSACHUSETTS  
NORWOOD MEML (OWTD)

**TOP ALTITUDE:  
2000**

**RADAR required.  
DME required: BLZZR, BRUWN, HYLND, PATSS, REVSS DEPARTURES**

ATIS 119.95  
CLNC DEL 121.8  
GND CON 121.8  
NORWOOD TOWER \* 126.0 (CTAF)  
BOSTON DEP CON 124.1 343.6



**TAKEOFF MINIMUMS:**  
 Rwy 10: 400-2½ or standard with minimum climb of 335' per NM to 300.  
 Rwy 17: Standard.  
 Rwy 28: 400-2 or standard with minimum climb of 385' per NM to 400.  
 Rwy 35: 300-1¾ or standard with minimum climb of 230' per NM to 400, or alternatively, with standard takeoff minimums and a normal 200' per NM climb gradient, takeoff must occur no later than 1900' prior to DER.

NOTE: Chart not to scale. (CONTINUED ON FOLLOWING PAGE)

(OWD4.OWD) 24025  
NORWOOD FOUR DEPARTURE

AL-725 (FAA)

NORWOOD MEML (OWTD)  
NORWOOD, MASSACHUSETTS

# NORWOOD FOUR DEPARTURE



## DEPARTURE ROUTE DESCRIPTION

TAKEOFF RUNWAY 10: Climb on heading 104° to 1100, then as assigned by ATC, thence . . . .

TAKEOFF RUNWAY 17: Climb on assigned heading, thence...

TAKEOFF RUNWAY 28: Climb on heading 284° to 700, then as assigned by ATC, thence . . . .

TAKEOFF RUNWAY 35: Climb on heading 280° CW 330° as assigned by ATC, thence . . . .

. . . . for RADAR vectors to assigned route/NAVAID/fix. Maintain 2000. Expect clearance to filed altitude/flight level within ten (10) minutes after departure.

NOTE: Non-GPS equipped aircraft can expect vectors on assigned route.

NOTE: BLZZR DEPARTURES expect vectors on BOS R-273.

NOTE: BRUWN DEPARTURES expect vectors on BOS R-159.

NOTE: CELTK DEPARTURES expect vectors on BOS R-114.

NOTE: HYLND DEPARTURES expect vectors on BOS R-350.

NOTE: PATSS DEPARTURES expect vectors on BOS R-260.

NOTE: REVSS DEPARTURES expect vectors on BOS R-285.

NOTE: SSOXS DEPARTURES expect vectors on BOS R-177.

NE-1, 22 FEB 2024 to 21 MAR 2024

NE-1, 22 FEB 2024 to 21 MAR 2024