

WAAS CH 40038 W16A	APP CRS 193°	Rwy Idg TDZE Apt Elev	2901 35 35
--	------------------------	-----------------------------	---------------------------------------

RNAV (GPS) RWY 16

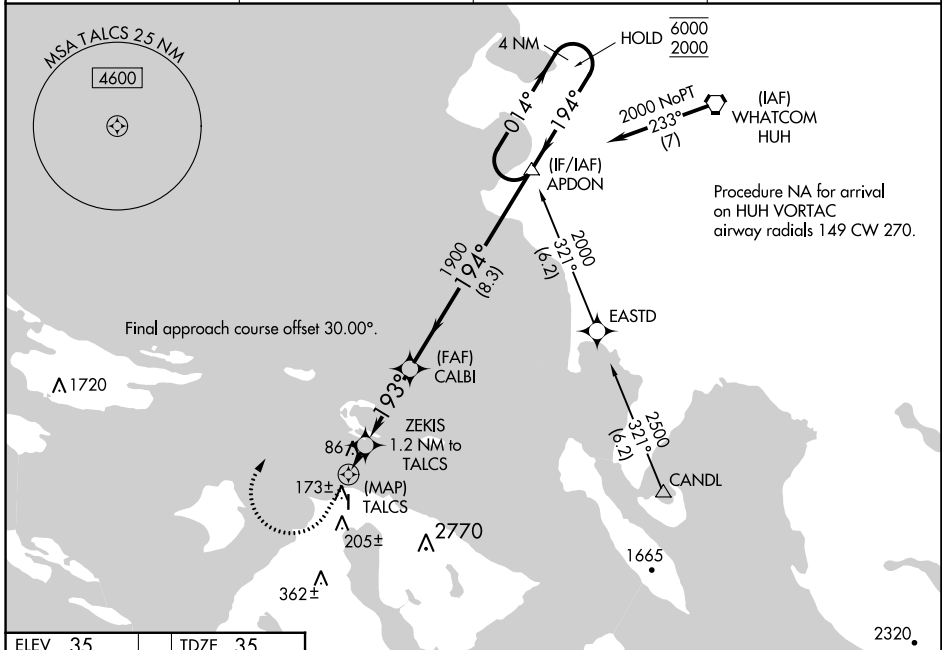
ORCAS ISLAND (ORS)

RNP APCH.

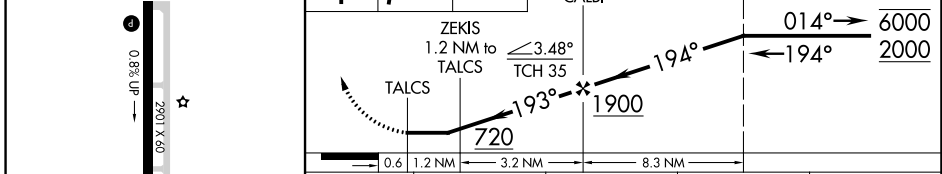
⚠ Circling to Rwy 34 NA at night. Rwy 16 helicopter visibility reduction below 3/4 SM NA. When local altimeter setting not received, use Friday Harbor altimeter setting and increase all MDA 40 feet.

MISSED APPROACH: Climb to 440 then climbing right turn to 2000 direct APDON and hold.
Missed approach requires minimum climb of 385 feet per NM to 980.

AWOS-3 135.425	WHIDBEY APP CON 118.2 285.65 (SOUTH)	VICTORIA APP CON 132.7 290.8 (NORTH)	CTAF 128.250
--------------------------	--	--	------------------------



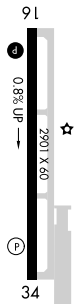
ELEV 35	TDZE 35	440	2000	APDON	4 NM Holding Pattern
---------	---------	-----	------	-------	----------------------



CATEGORY	A	B	C	D
LP MDA #	340-1	305 (400-1)		NA
LP MDA	400-1	365 (400-1)		NA
LNAV MDA #	440-1	405 (500-1)		NA
LNAV MDA	700-1	665 (700-1)		NA
C CIRCLING	1120-1¼ 1085 (1100-1¼)	1820-1½ 1785 (1800-1½)		NA

NW-1, 22 FEB 2024 to 21 MAR 2024

NW-1, 22 FEB 2024 to 21 MAR 2024



WAAS CH 99538 W34A	APP CRS 327°	Rwy Idg TDZE Apt Elev	2901 35 35
--	------------------------	-----------------------------	---------------------------------------

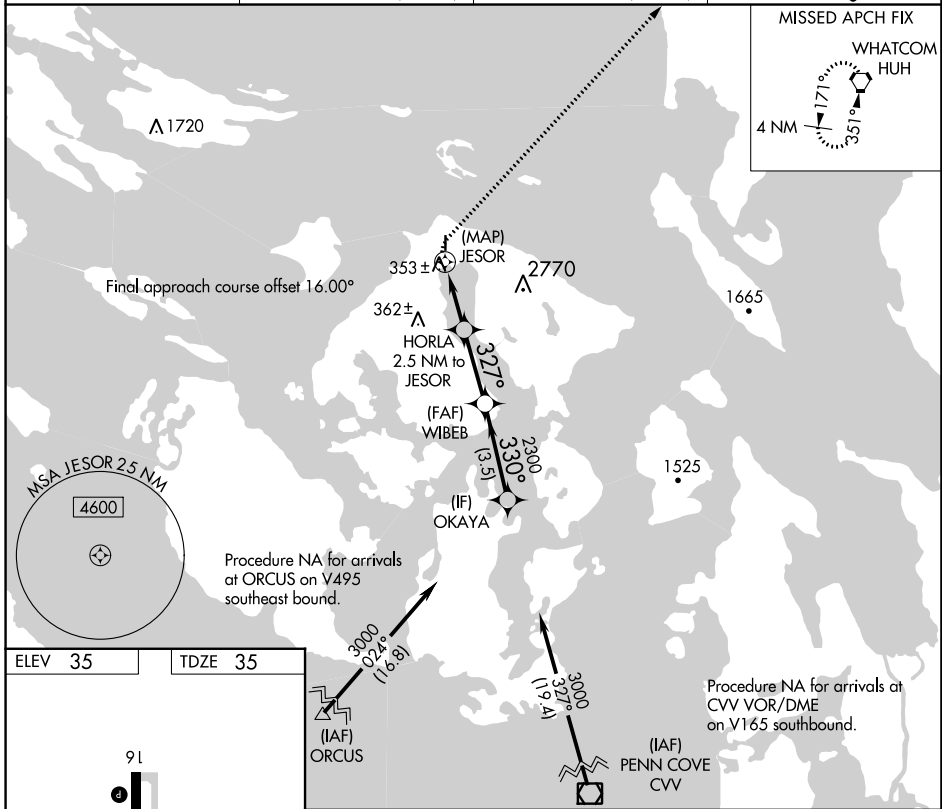
RNAV (GPS) RWY 34

ORCAS ISLAND (ORS)

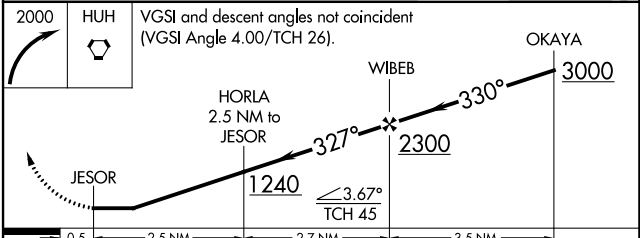
⚠ DME/DME RNP-0.3 NA. Helicopter visibility reduction below 1 SM NA.
⚠ WAAS required, if unable see RNAV GPS-A. When local altimeter setting not received, use Friday Harbor altimeter setting and increase all MDA 40 feet and LP Cat B visibility ¼ mile. Night landing: Rwy 34 NA.

MISSED APPROACH: Climbing right turn to 2000 direct HUH VORTAC and hold.

AWOS-3 135.425	WHIDBEY APP CON 118.2 285.65 (SOUTH)	VICTORIA APP CON 132.7 290.8 (NORTH)	CTAF 128.250
--------------------------	--	--	------------------------



ELEV 35	TDZE 35
<p>MIRL Rwy 16-34 0 REIL Rwy 16 and 34 0</p>	



CATEGORY	A	B	C	D
LP MDA	760-1	725 (800-1)	NA	
C CIRCLING	1120-1¼ 1085 (1100-1¼)	1820-1½ 1785 (1800-1½)	NA	

NW-1, 22 FEB 2024 to 21 MAR 2024

NW-1, 22 FEB 2024 to 21 MAR 2024

APP CRS	Rwy Idg	N/A
343°	TDZE	N/A
	Apt Elev	35

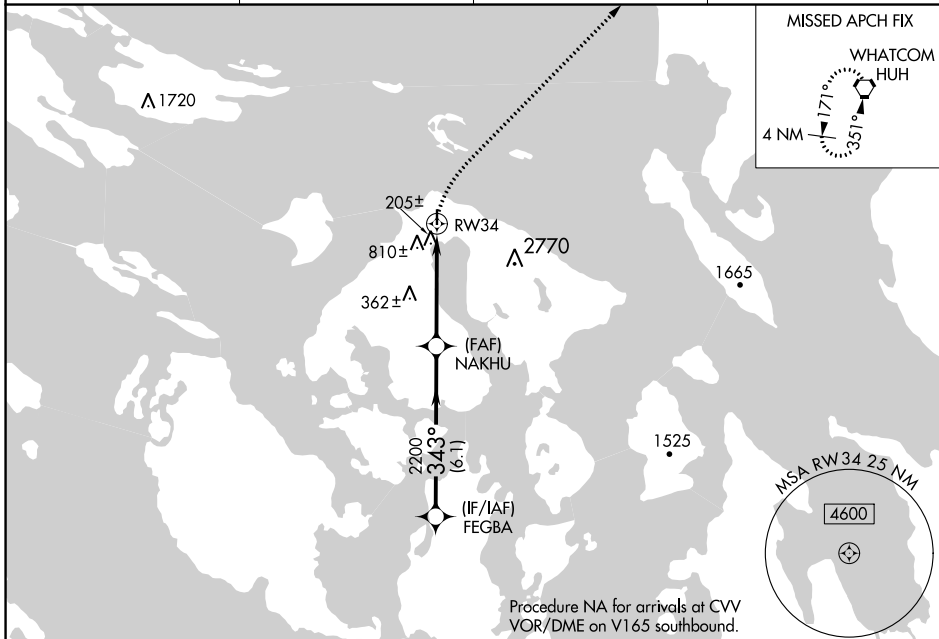
RNAV (GPS)-A

ORCAS ISLAND (ORS)

▼ DME/DME RNP-0.3 NA. Helicopter visibility reduction below 1 SM NA.
▲ When local altimeter setting not received, use Friday Harbor altimeter setting and increase MDA 40 feet. Night landing: Rwy 34 NA.

MISSED APPROACH: Climbing right turn to 2000 direct HUH VORTAC and hold.

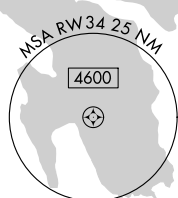
AWOS-3 135.425	WHIDBEY APP CON 118.2 285.65 (SOUTH)	VICTORIA APP CON 132.7 290.8 (NORTH)	CTAF 128.25 0
--------------------------	--	--	-------------------------



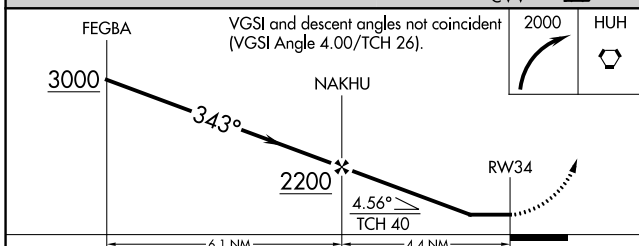
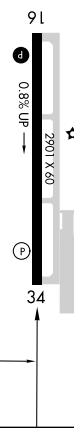
NW-1, 22 FEB 2024 to 21 MAR 2024

NW-1, 22 FEB 2024 to 21 MAR 2024

Procedure NA for arrivals at CVV VOR/DME on V165 southbound.



ELEV	35
MIRL Rwy 16-34	0
REIL Rws 16 and 34	0



CATEGORY	A	B	C	D
C CIRCLING	1120-1¼ 1085 (1100-1¼)	1820-1½ 1785 (1800-1½)	NA	