

(NYTES1 .NYTES) 21168

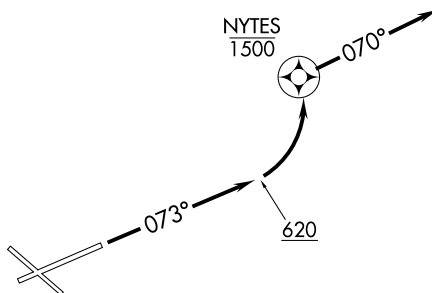
AL-305 (FAA)

# NYTES ONE DEPARTURE (RNAV)

EXEC (ORL)  
ORLANDO, FLORIDA

ATIS  
127.25  
CLNC DEL  
128.45  
GND CON  
121.4 239.0  
EXECUTIVE TOWER ★  
118.7 239.0  
ORLANDO DEP CON  
119.775 351.9

**TOP ALTITUDE:  
1500**



NOTE: DME/DME/IRU or GPS required.  
NOTE: RADAR required.  
NOTE: RNAV 1.

### TAKEOFF MINIMUMS

Rwy 7: Standard with minimum climb of 500' per NM to 620.

NOTE: Chart not to scale.



### DEPARTURE ROUTE DESCRIPTION

TAKEOFF RUNWAY 7: Climb on heading 073° to 620, then left turn direct to cross NYTES at or below 1500, thence. . . .

. . . on heading 070° or as assigned by ATC. Maintain 1500, expect clearance to filed altitude within 10 minutes after departure.

# NYTES ONE DEPARTURE (RNAV)

(NYTES1 .NYTES) 22APR21

ORLANDO, FLORIDA  
EXEC (ORL)

SE-3, 22 FEB 2024 to 21 MAR 2024

SE-3, 22 FEB 2024 to 21 MAR 2024

(TOLLZ1.TOLLZ) 21168

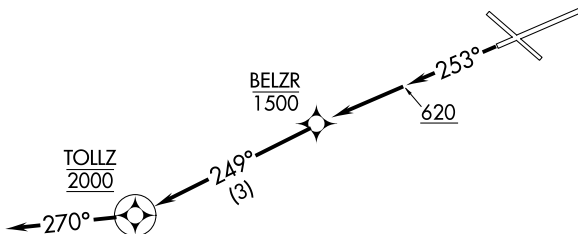
AL-305 (FAA)

EXEC (ORL)  
ORLANDO, FLORIDA

# TOLLZ ONE DEPARTURE (RNAV)

**TOP ALTITUDE:  
2000**

ATIS  
127.25  
CLNC DEL  
128.45  
GND CON  
121.4 239.0  
EXECUTIVE TOWER ★  
118.7 239.0  
ORLANDO DEP CON  
119.4 351.9



NOTE: DME/DME/IRU or GPS required.  
NOTE: RADAR required.  
NOTE: RNAV 1.

### TAKEOFF MINIMUMS

Rwy 25: Standard with minimum climb of 500' per NM to 620.

NOTE: Chart not to scale.



### DEPARTURE ROUTE DESCRIPTION

TAKEOFF RUNWAY 25: Climb on heading 253° to 620, then direct to cross BELZR at or below 1500, then on track 249° to cross TOLLZ at 2000, thence. . . .

. . . .on heading 270° or as assigned by ATC. Expect clearance to filed altitude within 10 minutes after departure.

**TOLLZ ONE DEPARTURE (RNAV)**  
(TOLLZ1.TOLLZ) 22APR21

ORLANDO, FLORIDA  
EXEC (ORL)

SE-3, 22 FEB 2024 to 21 MAR 2024

SE-3, 22 FEB 2024 to 21 MAR 2024