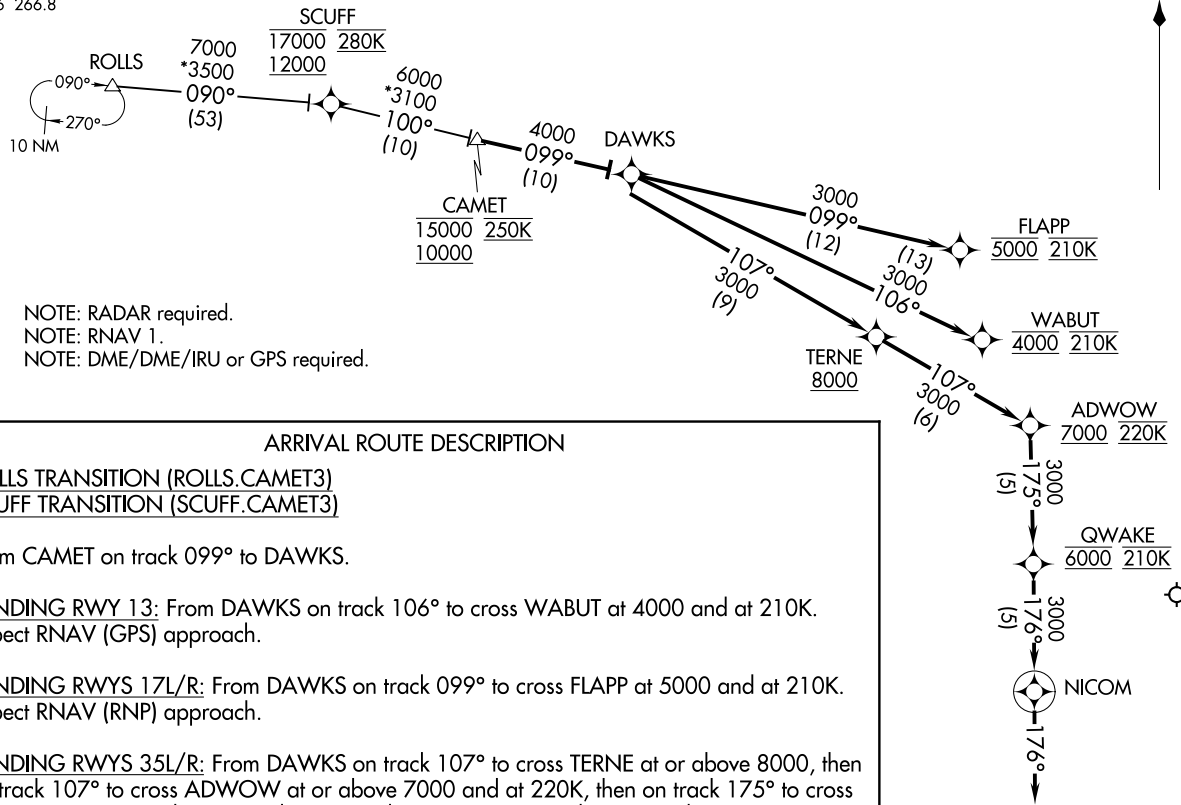


CAMET THREE ARRIVAL (RNAV)
(CAMET.CAMET3) 07DEC17

OKC D-ATIS
125.85
OKE CITY APP CON
124.6 266.8



NOTE: RADAR required.
NOTE: RNAV 1.
NOTE: DME/DME/IRU or GPS required.

ARRIVAL ROUTE DESCRIPTION

ROLLS TRANSITION (ROLLS.CAMET3)
SCUFF TRANSITION (SCUFF.CAMET3)

From CAMET on track 099° to DAWKS.

LANDING RWY 13: From DAWKS on track 106° to cross WABUT at 4000 and at 210K.
Expect RNAV (GPS) approach.

LANDING RWYS 17L/R: From DAWKS on track 099° to cross FLAPP at 5000 and at 210K.
Expect RNAV (RNP) approach.

LANDING RWYS 35L/R: From DAWKS on track 107° to cross TERNE at or above 8000, then on track 107° to cross ADWOW at or above 7000 and at 220K, then on track 175° to cross QWAKE at 6000 and at 210K, then on track 176° to NICOM, then on track 176°. Expect RADAR vectors to final approach course.

NOTE: Chart not to scale.

(CAMET.CAMET3) 17341
CAMET THREE ARRIVAL (RNAV)

AL-301 (FAA)

WILL ROGERS WORLD (OKC)
OKLAHOMA CITY, OKLAHOMA

OKLAHOMA CITY, OKLAHOMA
WILL ROGERS WORLD (OKC)

GHOST THREE ARRIVAL (RNAV)
(GHOST.GHOST3) 07DEC17

OKC D-ATIS
125.85
OKE CITY APP CON
124.6 266.8

NOTE: RADAR required.
NOTE: RNAV 1.
NOTE: DME/DME/IRU or GPS required.

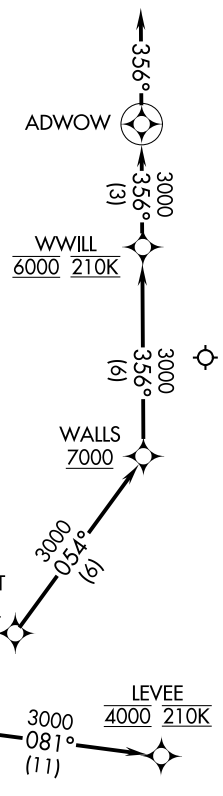
ARRIVAL ROUTE DESCRIPTION

BROMA TRANSITION (BROMA.GHOST3)
RUSTS TRANSITION (RUSTS.GHOST3)

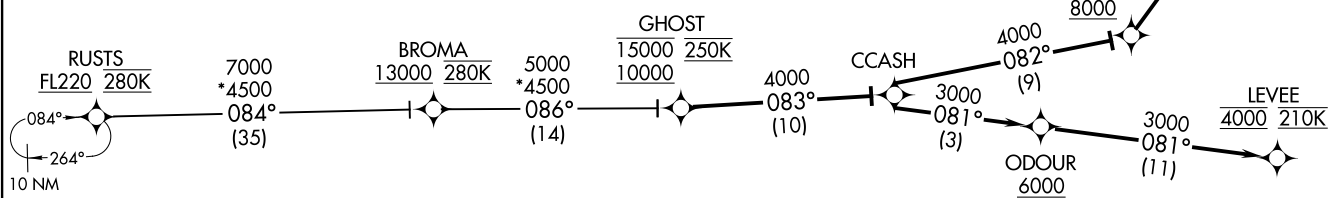
From GHOST on track 083° to CCASH.

LANDING RWYS 17L/R: From CCASH on track 082° to cross DIGHT at or above 8000, then on track 054° to cross WALLS at or above 7000, then on track 356° to cross WWILL at 6000 and at 210K, then on track 356° to ADWOW, then on track 356°.

LANDING RWYS 35L/R: From CCASH on track 081° to cross ODOUR at or above 6000, then on track 081° to cross LEVEE at 4000 and at 210K. Expect RNAV (RNP) approach.



OKLAHOMA CITY, OKLAHOMA
WILL ROGERS WORLD (OKC)



NOTE: Chart not to scale.

(GHOST.GHOST3) 17341
GHOST THREE ARRIVAL (RNAV)

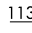
AL-301 (FAA)

WILL ROGERS WORLD (OKC)
OKLAHOMA CITY, OKLAHOMA

GULLI THREE ARRIVAL

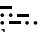
OKLAHOMA CITY, OKLAHOMA

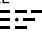
OKC APP CON
 124.2 336.4
 KTIK ATIS*
 270.1
 OKC D-ATIS
 125.85
 PWA ATIS
 128.725

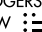
PIONEER
 113.2 PER 
 Chan 79


BARTLESVILLE
 117.9 BVO 
 Chan 126

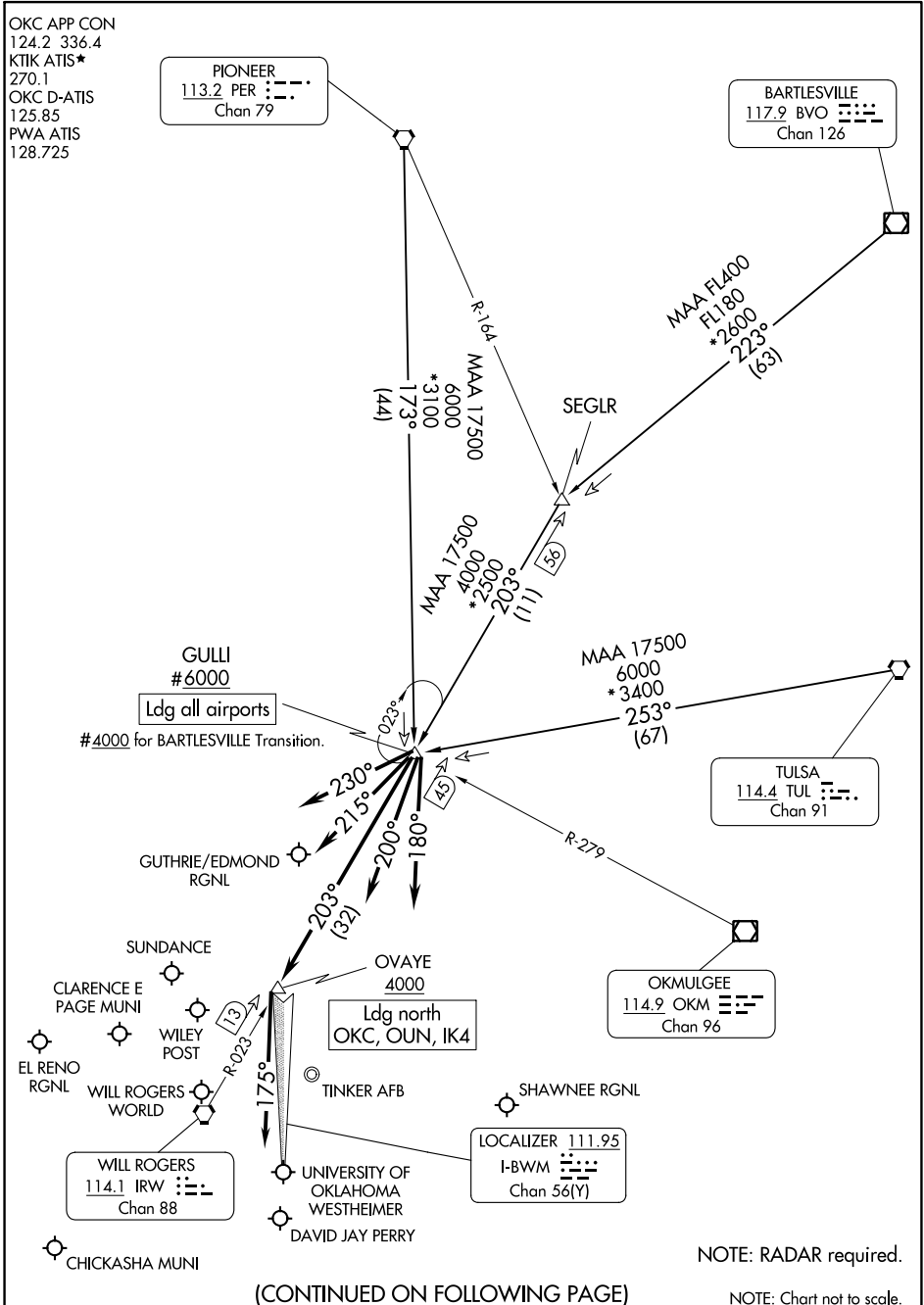
GULLI #6000
 Ldg all airports
 #4000 for BARTLESVILLE Transition.

TULSA
 114.4 TUL 
 Chan 91

OKMULGEE
 114.9 OKM 
 Chan 96

WILL ROGERS
 114.1 IRW 
 Chan 88

LOCALIZER 111.95
 I-BWM 
 Chan 56(Y)



SC-1, 22 FEB 2024 to 21 MAR 2024

SC-1, 22 FEB 2024 to 21 MAR 2024

(CONTINUED ON FOLLOWING PAGE)

NOTE: RADAR required.

NOTE: Chart not to scale.

GULLI THREE ARRIVAL

(GULLI.GULLI3) 19MAY22

OKLAHOMA CITY, OKLAHOMA

ARRIVAL DESCRIPTION

BARTLESVILLE TRANSITION (BVO.GULLI3): From over BVO VOR/DME on BVO R-223 to SEGLR, then on IRW R-023 to GULLI. Thence. . . .

PIONEER TRANSITION (PER.GULLI3): From over PER VORTAC on PER R-173 to GULLI. Thence. . . .

TULSA TRANSITION (TUL.GULLI3): From over TUL VORTAC on TUL R-253 to GULLI. Thence. . . .

ALL AIRCRAFT LANDING SOUTH:

. . . .For GOK, HSD, PWA, RCE, RQO, CHK airports: From over GULLI, fly heading 230° for RADAR vectors to final approach course.

. . . .For OKC, OUN, 1K4, airports: From over GULLI, fly heading 215° for RADAR vectors to final approach course.

. . . .For TIK, SNL airports: From over GULLI, fly heading 200° for RADAR vectors to final approach course.

ALL AIRCRAFT LANDING NORTH:

. . . .For GOK, HSD, PWA, RCE, RQO, CHK airports: From over GULLI, fly heading 230° for RADAR vectors to final approach course.

. . . .For OKC, OUN, 1K4 airports: From over GULLI on WILL ROGERS VORTAC (IRW) 023° to cross OVAYE at or above 4000, then fly heading 175° for RADAR vectors to final approach course.

. . . .For TIK, SNL airports: From over GULLI, fly heading 180° for RADAR vectors to final approach course.

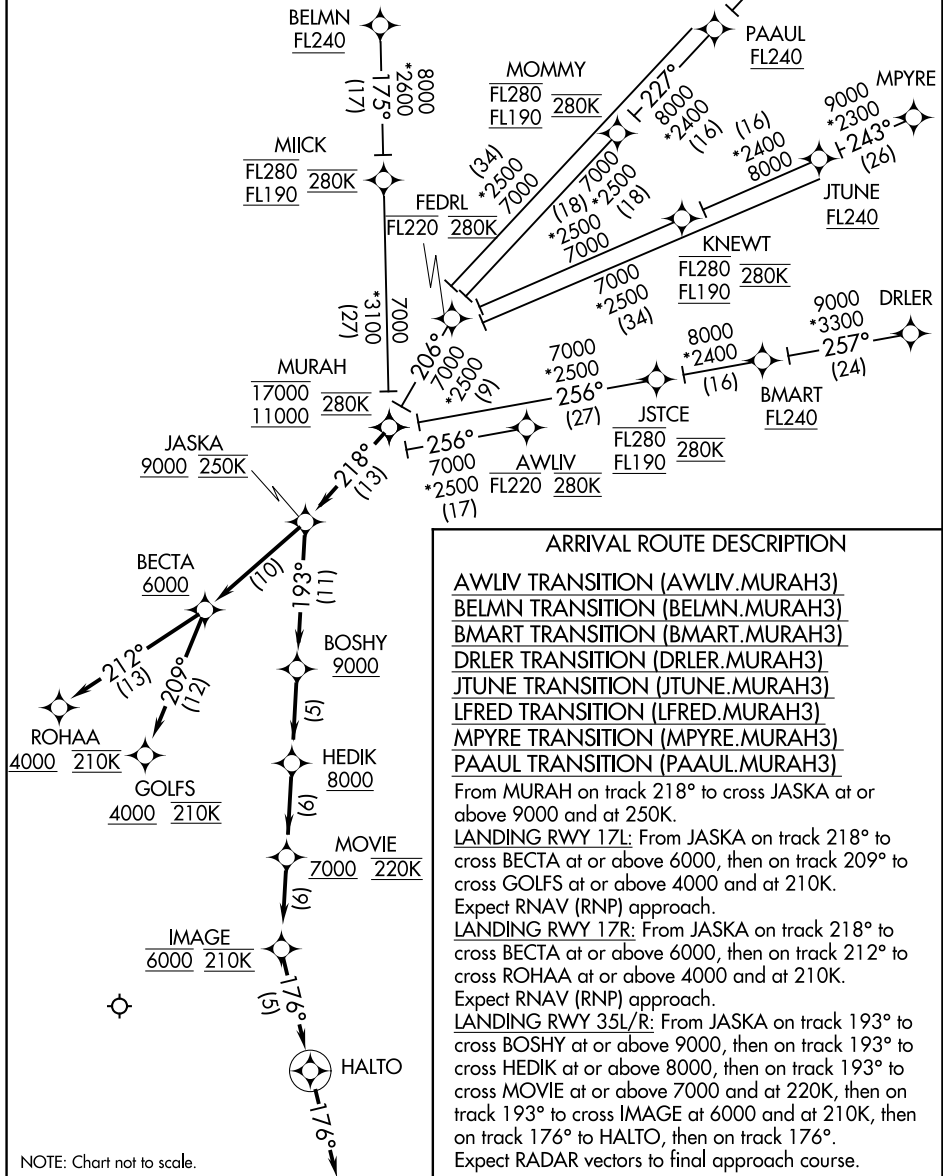
SC-1, 22 FEB 2024 to 21 MAR 2024

SC-1, 22 FEB 2024 to 21 MAR 2024

MURAH THREE ARRIVAL (RNAV)

OKC D-ATIS
125.85
OKC APP CON
124.2 336.4

- NOTE: RADAR required.
- NOTE: RNAV 1.
- NOTE: DME/DME/IRU or GPS Required.
- NOTE: Turbojet aircraft only.
- NOTE: For non-GPS equipped aircraft, IFI DME must be operational.



ARRIVAL ROUTE DESCRIPTION

- AWLIV TRANSITION (AWLIV.MURAH3)
- BELMN TRANSITION (BELMN.MURAH3)
- BMAAT TRANSITION (BMAAT.MURAH3)
- DRLER TRANSITION (DRLER.MURAH3)
- JTUNE TRANSITION (JTUNE.MURAH3)
- LFRED TRANSITION (LFRED.MURAH3)
- MPYRE TRANSITION (MPYRE.MURAH3)
- PAAUL TRANSITION (PAAUL.MURAH3)

From MURAH on track 218° to cross JASKA at or above 9000 and at 250K.

LANDING RWY 17L: From JASKA on track 218° to cross BECTA at or above 6000, then on track 209° to cross GOLFS at or above 4000 and at 210K. Expect RNAV (RNP) approach.

LANDING RWY 17R: From JASKA on track 218° to cross BECTA at or above 6000, then on track 212° to cross ROHAA at or above 4000 and at 210K. Expect RNAV (RNP) approach.

LANDING RWY 35L/R: From JASKA on track 193° to cross BOSHY at or above 9000, then on track 193° to cross HEDIK at or above 8000, then on track 193° to cross MOVIE at or above 7000 and at 220K, then on track 193° to cross IMAGE at 6000 and at 210K, then on track 176° to HALTO, then on track 176°. Expect RADAR vectors to final approach course.

NOTE: Chart not to scale.

SC-1, 22 FEB 2024 to 21 MAR 2024

SC-1, 22 FEB 2024 to 21 MAR 2024

MURAH THREE ARRIVAL (RNAV)

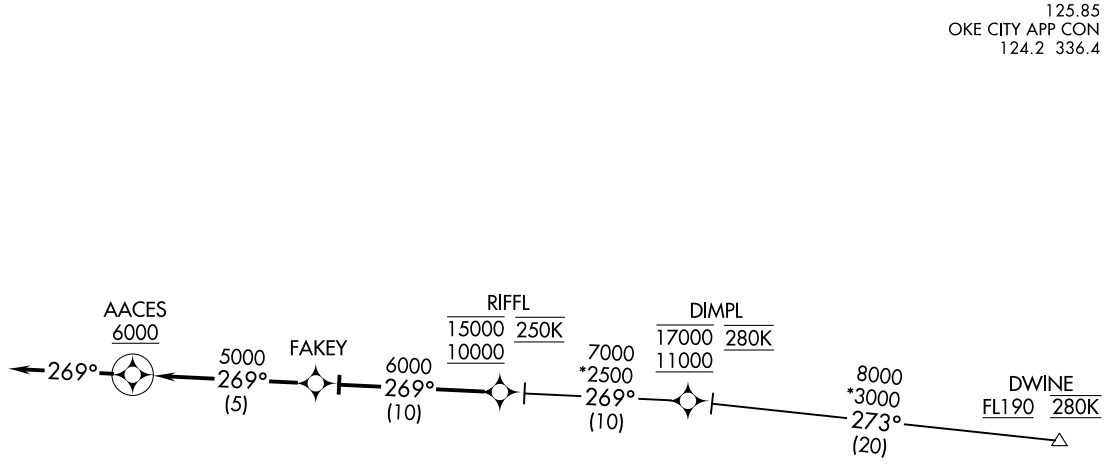
(MURAH.MURAH3) 07DEC17

(RIFFL,RIFFL3) 20030
RIFFL THREE ARRIVAL (RNAV)

AL-301 (FAA)

WILL ROGERS WORLD (OKC)
OKLAHOMA CITY, OKLAHOMA

OKC D-ATIS
125.85
OKE CITY APP CON
124.2 336.4



RIFFL THREE ARRIVAL (RNAV)
(RIFFL,RIFFL3) 07/DEC17

OKLAHOMA CITY, OKLAHOMA
WILL ROGERS WORLD (OKC)

ARRIVAL ROUTE DESCRIPTION

DIMPL TRANSITION (DIMPL.RIFFL3)
DWINE TRANSITION (DWINE.RIFFL3)

From RIFFL on track 269° to FAKEY.

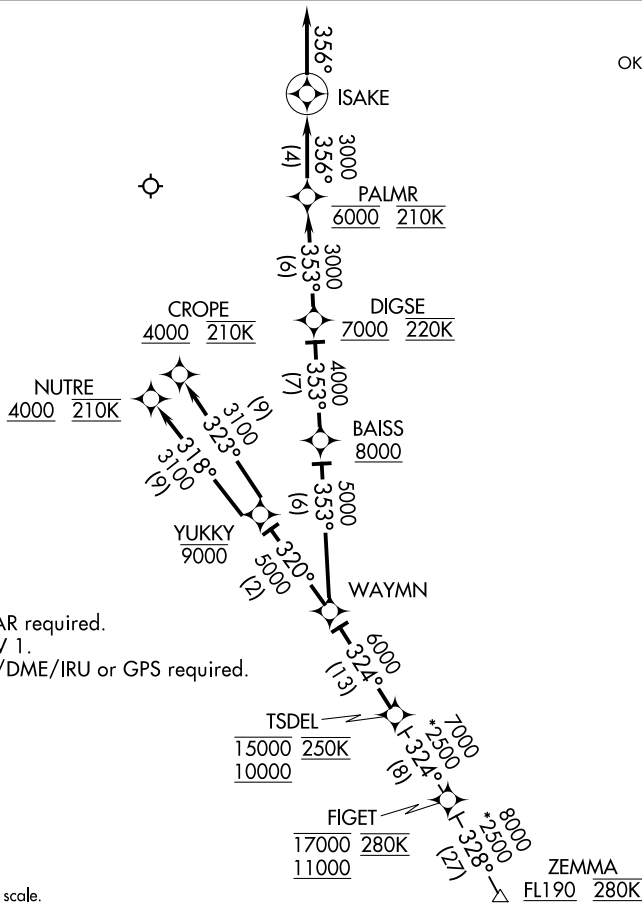
LANDING RWYS 17L/R, 35L/R: From FAKEY on track 269° to cross AACES at or above 6000, then on track 269°. Expect RADAR vectors to final approach course.

NOTE: RADAR required.
NOTE: RNAV 1.
NOTE: DME/DME/IRU or GPS required.

NOTE: Chart not to scale.

TSDEL THREE ARRIVAL (RNAV)

D-ATIS
125.85
OKE CITY APP CON
124.2 336.4



NOTE: RADAR required.
NOTE: RNAV 1.
NOTE: DME/DME/IRU or GPS required.

NOTE: Chart not to scale.

ARRIVAL ROUTE DESCRIPTION

FIGET TRANSITION (FIGET.TSDEL3)
ZEMMA TRANSITION (ZEMMA.TSDEL3)

From TSDEL on track 324° to WAYMN.

LANDING RWYS 17L/R: From WAYMN on track 353° to cross BAISS at or above 8000, then on track 353° to cross DIGSE at or above 7000 and at 220K, then on track 353° to cross PALMR at 6000 and at 210K, then on track 356° to ISAKE, then on track 356°. Expect RADAR vectors to final approach course.

LANDING RWY 35L: From WAYMN on track 320° to cross YUKKY at or below 9000, then on track 318° to cross NUTRE at or above 4000 and at 210K. Expect RNAV (RNP) approach.

LANDING RWY 35R: From WAYMN on track 320° to cross YUKKY at or below 9000, then on track 323° to cross CROPE at or above 4000 and at 210K. Expect RNAV (RNP) approach.

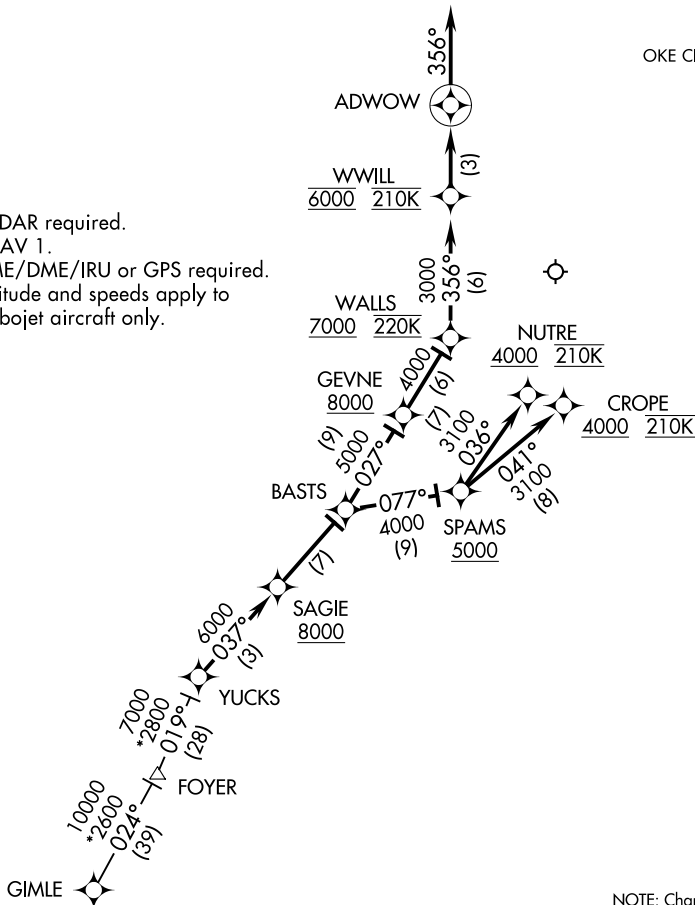
TSDEL THREE ARRIVAL (RNAV)

(YUCKS.YUCKS3) 17341 AL-301 (FAA)
YUCKS THREE ARRIVAL (RNAV)

WILL ROGERS WORLD (OKC)
 OKLAHOMA CITY, OKLAHOMA

OKC D-ATIS
 125.85
 OKE CITY APP CON
 124.6 266.8

NOTE: RADAR required.
 NOTE: RNAV 1.
 NOTE: DME/DME/IRU or GPS required.
 NOTE: Altitude and speeds apply to turbojet aircraft only.



NOTE: Chart not to scale.

ARRIVAL ROUTE DESCRIPTION

GIMLE TRANSITION (GIMLE.YUCKS3):

From YUCKS on track 037° to cross SAGIE at or above 8000, then on track 037° to BASTS.

LANDING RWY 17L/R: From BASTS on track 027° to cross GEVNE at or above 8000, then on track 027° to cross WALLS at or above 7000 and at 220K, then on track 356° to cross WWILL at 6000 and at 210K, then on track 356° to ADWOW, then on track 356°.
 Expect radar vectors to final approach course.

LANDING RWY 35L: From BASTS on track 077° to cross SPAMS at or above 5000, then on track 036° to cross NUTRE at or above 4000 and at 210K. Expect RNAV (RNP) approach.

LANDING RWY 35R: From BASTS on track 077° to cross SPAMS at or above 5000, then on track 041° to cross CROPE at or above 4000 and at 210K. Expect RNAV (RNP) approach.

YUCKS THREE ARRIVAL (RNAV)
 (YUCKS.YUCKS3) 07DEC17

OKLAHOMA CITY, OKLAHOMA
 WILL ROGERS WORLD (OKC)

SC-1, 22 FEB 2024 to 21 MAR 2024

SC-1, 22 FEB 2024 to 21 MAR 2024