

LOC/DME I-OPP 109.7 Chan 34	APP CRS 159°	Rwy Idg TDZE Apt Elev	5402 207 207
---	------------------------	-----------------------------	---

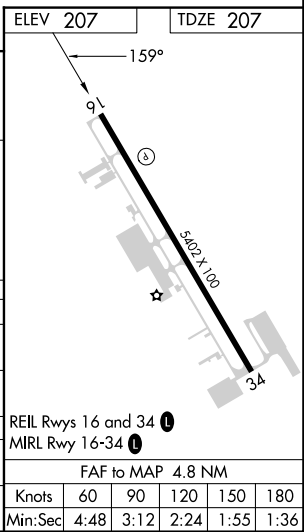
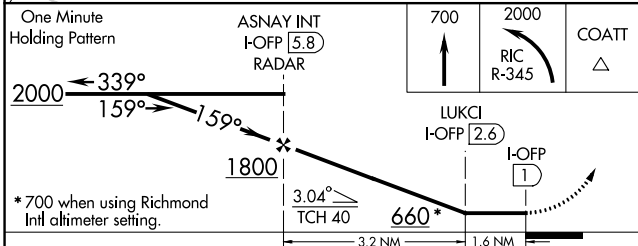
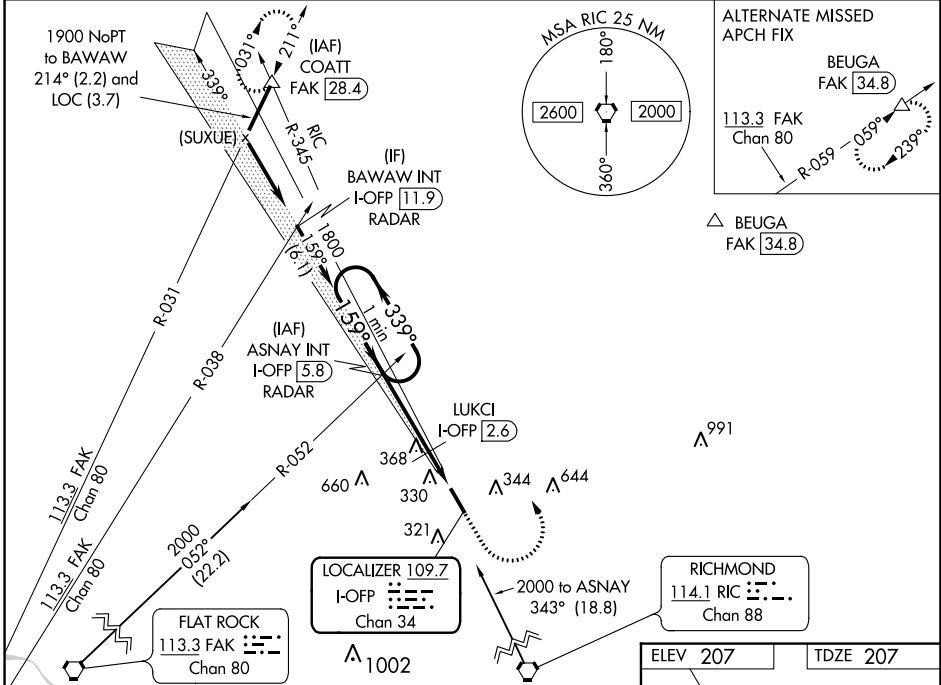
LOC RWY 16

HANOVER COUNTY MUNI (OFP)

▼ Helicopter visibility reduction below 3/4 SM NA. When local altimeter setting not received, use Richmond Intl altimeter setting and increase all MDAs 40 feet; increase LUKCI fix minimums S-16 Cat C visibility 1/8 SM.

MISSED APPROACH: Climb to 700 then climbing left turn to 2000 via RIC VORTAC R-345 to COATT INT and hold.

ASOS 119.025	POTOMAC APP CON 126.75 307.2	CLNC DEL 125.4	UNICOM 122.7 (CTAF) 0
------------------------	--	--------------------------	--



CATEGORY	A	B	C	D
S-16	660-1	453 (500-1)	660-1 3/8 453 (500-1 3/8)	660-1 1/2 453 (500-1 1/2)
C CIRCLING	660-1	453 (500-1)	900-2 693 (700-2)	1020-2 3/4 813 (900-2 3/4)
LUKCI FIX MINIMUMS				
S-16	560-1 353 (400-1)		560-1 1/4 353 (400-1 1/4)	
C CIRCLING	660-1	453 (500-1)	900-2 693 (700-2)	1020-2 3/4 813 (900-2 3/4)

REIL Rwy 16 and 34 0					
MIRL Rwy 16-34 0					
FAF to MAP 4.8 NM					
Knots	60	90	120	150	180
Min:Sec	4:48	3:12	2:24	1:55	1:36

NE-3, 22 FEB 2024 to 21 MAR 2024

NE-3, 22 FEB 2024 to 21 MAR 2024

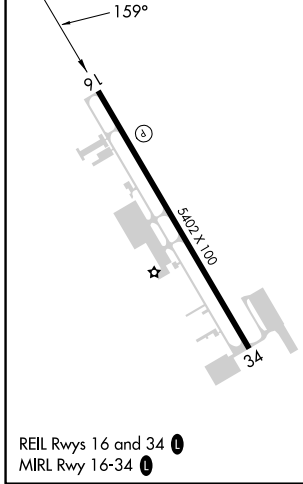
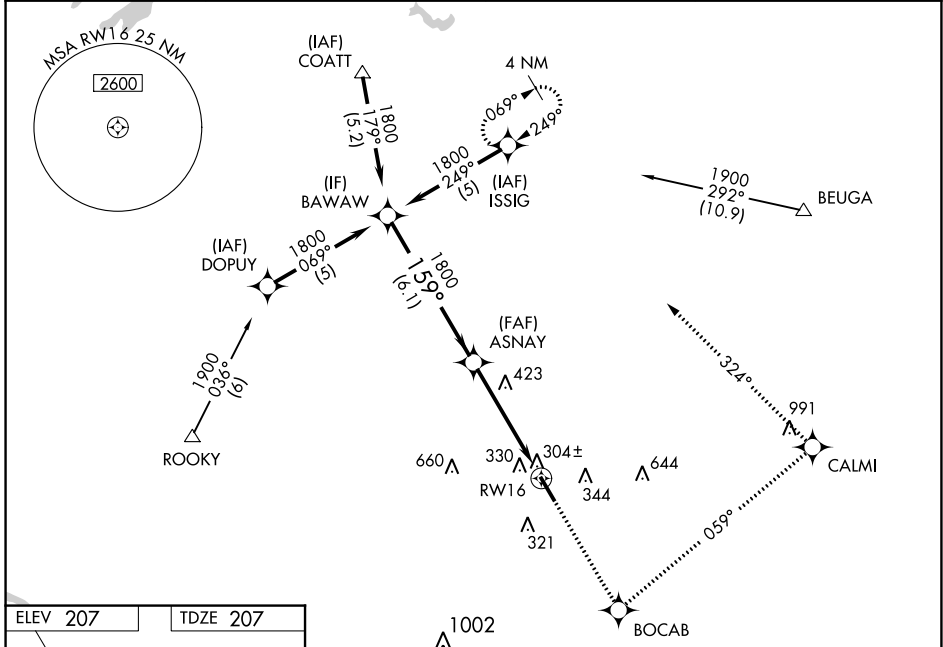
WAAS CH 42904 W16A	APP CRS 159°	Rwy ldg TDZE Apt Elev	5402 207 207
--	------------------------	-----------------------------	---

RNAV (GPS) RWY 16

HANOVER COUNTY MUNI (OFP)

RNP APCH.	MISSED APPROACH: Climb to 2000 direct BOCAV and left turn via 059° track to CALMI and left turn via 324° track to ISSIG and hold.
<p>⚠ When local altimeter setting not received, use Richmond Intl altimeter setting and increase all DA 37 feet and all MDA 40 feet; increase LNAV/VNAV all Cats and LNAV Cats C/D visibility ¼ mile. Baro-VNAV NA when using Richmond Intl altimeter setting. For uncompensated Baro-VNAV systems LNAV/VNAV NA below -15°C or above 54°C. Rwy 16 helicopter visibility reduction below ¾ SM NA.</p>	

ASOS 119.025	POTOMAC APP CON 126.75 307.2	CLNC DEL 125.4	UNICOM 122.7 (CTAF) 0
------------------------	--	--------------------------	---------------------------------



BAWAW	2000	BOCAV	↙	CALMI	↙	ISSIG
	↑	✦	tr 059°	✦	tr 324°	✦
Procedure Turn NA	ASNAY VGSi and RNAV glidepath not coincident (VGSi Angle 3.00/TCH 40).					
1800	159°		1800		RWY 16	
GP 3.00° TCH 40	6.1 NM		4.8 NM			
CATEGORY	A	B	C	D		
LPV DA	535-1¼		328 (400-1¼)			
LNAV/VNAV DA	564-1¼		357 (400-1¼)			
LNAV MDA	700-1	493 (500-1)	700-1¼	700-1½	493 (500-1½)	493 (500-1½)
CIRCLING	700-1	493 (500-1)	900-2	1020-2¾	693 (700-2)	813 (900-2¾)

NE-3, 22 FEB 2024 to 21 MAR 2024

NE-3, 22 FEB 2024 to 21 MAR 2024

WAAS CH 72937 W34A	APP CRS 339°	Rwy Idg TDZE Apt Elev	5402 204 207
--	------------------------	-----------------------------	---

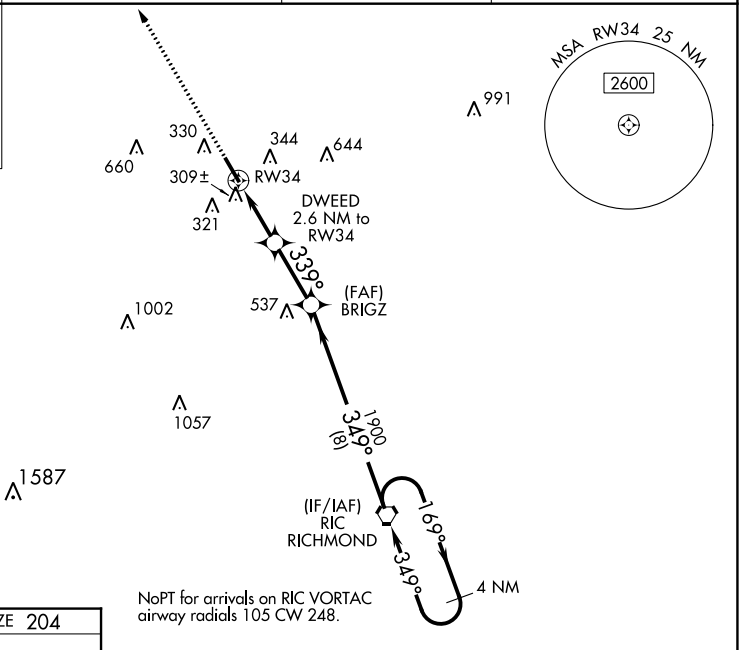
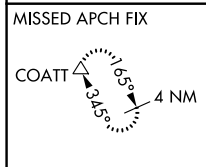
RNAV (GPS) RWY 34

HANOVER COUNTY MUNI (OFP)

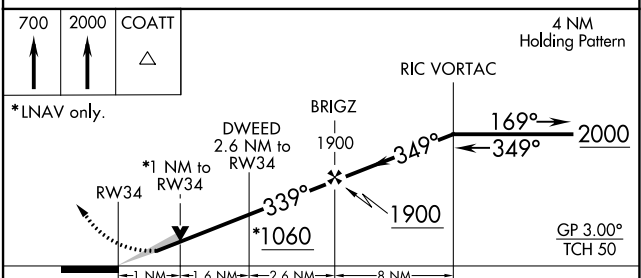
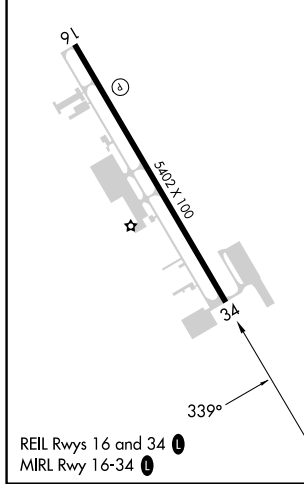
⚠ For uncompensated Baro-VNAV systems, LNAV/VNAV NA below -11°C (13°F) or above 54°C (130°F). DME/DME RNP-0.3 NA. When local altimeter setting not received, use Richmond Intl altimeter setting and increase all DA 37 feet and all MDA 40 feet; increase LNAV/VNAV all Cats and LNAV Cats C/D visibility 1/8 mile. Baro-VNAV and VDP NA when using Richmond Intl altimeter setting.

MISSED APPROACH: Climb to 700 then climb to 2000 direct COATT and hold.

ASOS 119.025	POTOMAC APP CON 126.75 307.2	CLNC DEL 125.4	UNICOM 122.7 (CTAF) 0
------------------------	--	--------------------------	---------------------------------



ELEV 207	TDZE 204
-----------------	-----------------



CATEGORY	A	B	C	D
LPV DA		454-1	250 (300-1)	
LNAV/VNAV DA		493-1	289 (300-1)	
LNAV MDA		560-1	356 (400-1)	
C CIRCLING	660-1	453 (500-1)	900-2 693 (700-2)	1020-2¾ 813 (900-2¾)

NE-3, 22 FEB 2024 to 21 MAR 2024

NE-3, 22 FEB 2024 to 21 MAR 2024

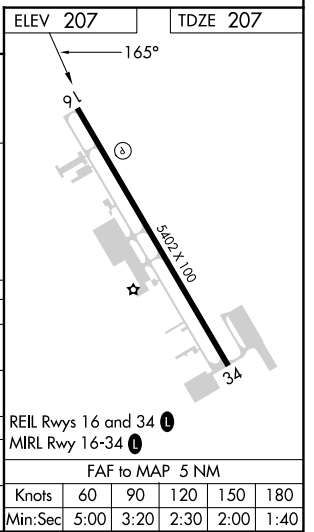
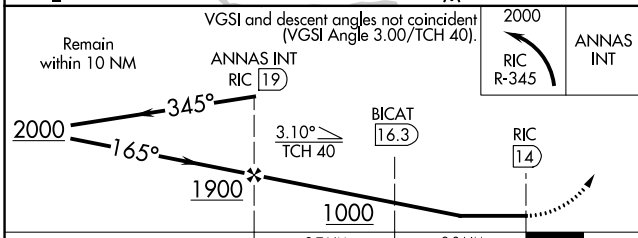
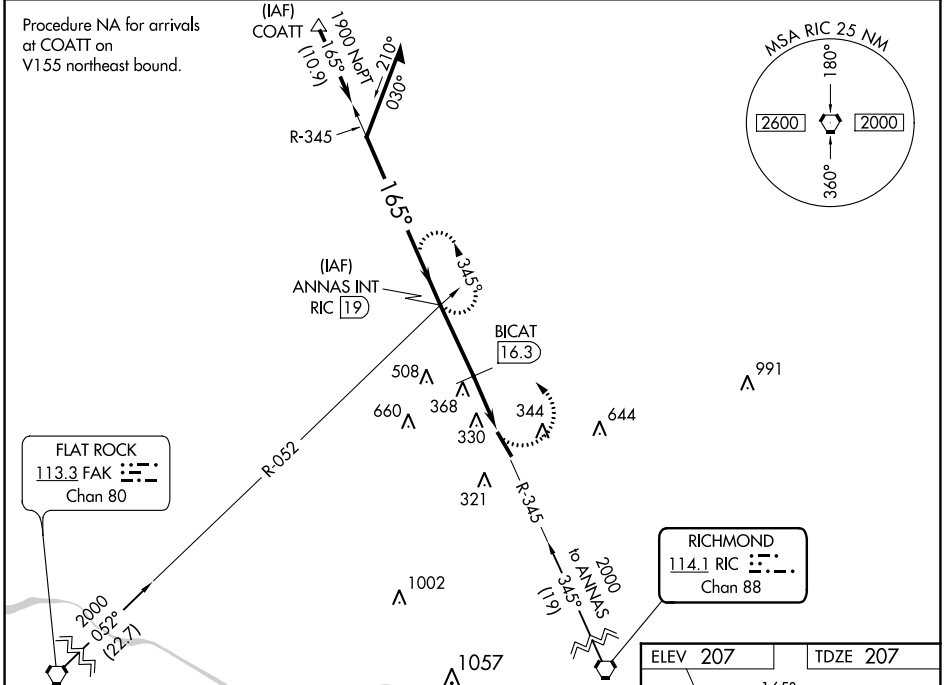
VORTAC RIC 114.1 Chan 88	APP CRS 165°	Rwy Idg TDZE Apt Elev	5402 207 207
--	------------------------	-----------------------------	---

VOR RWY 16
HANOVER COUNTY MUNI (OFP)

⚠ When local altimeter setting not received, use Richmond Intl altimeter setting and increase all MDA 40 feet. Rwy 16 helicopter visibility reduction below ¼ SM NA.

⚠ MISSED APPROACH: Climbing left turn to 2000 via RIC R-345 to ANNAS INT/19 DME and hold.

ASOS 119.025	POTOMAC APP CON 126.75 307.2	CLNC DEL 125.4	UNICOM 122.7 (CTAF)
------------------------	--	--------------------------	-------------------------------



CATEGORY	A	B	C	D
S-16	1000-1 793 (800-1)	1000-1¼ 793 (800-1¼)	1000-2¼ 793 (800-2¼)	1000-2½ 793 (800-2½)
C CIRCLING	1000-1 793 (800-1)	1000-1¼ 793 (800-1¼)	1000-2¼ 793 (800-2¼)	1020-2¾ 813 (900-2¾)
BICAT FIX MINIMUMS (DME REQUIRED)				
S-16	820-1	613 (700-1)	820-1¾	613 (700-1¾)
C CIRCLING	820-1	613 (700-1)	900-2 693 (700-2)	1020-2¾ 813 (900-2¾)

NE-3, 22 FEB 2024 to 21 MAR 2024

NE-3, 22 FEB 2024 to 21 MAR 2024