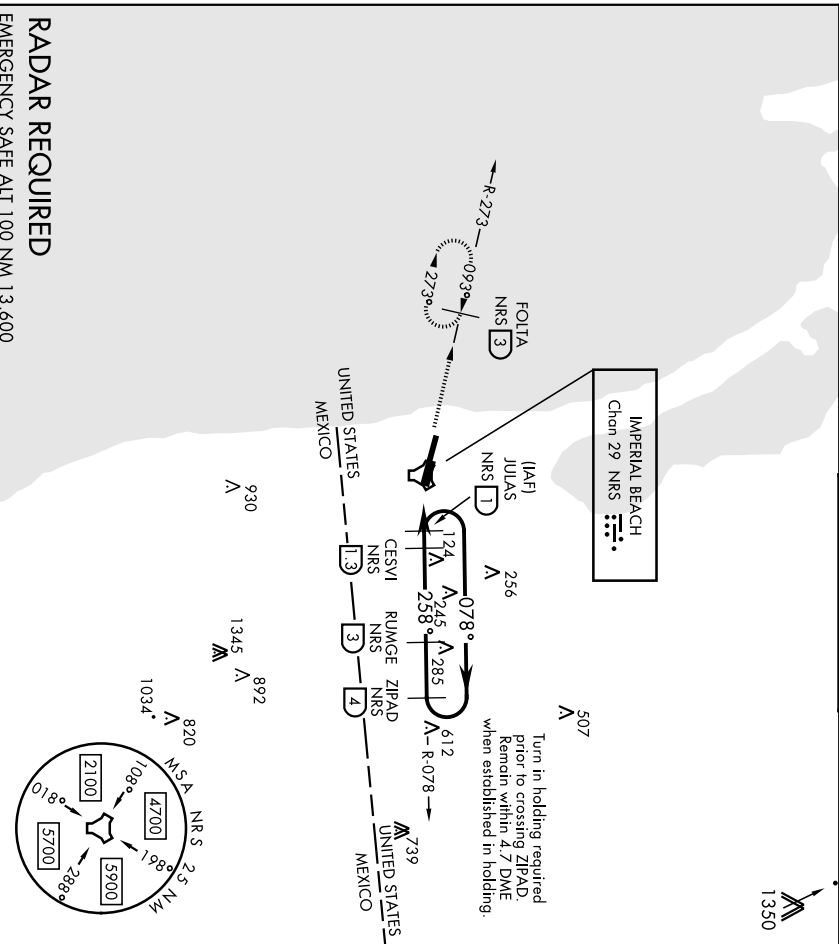


COPTER TACAN RWY 27

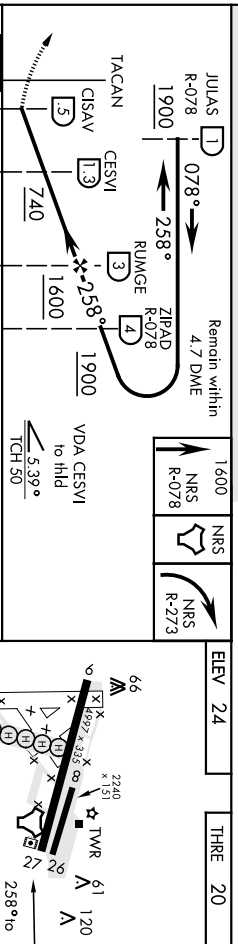
AL-307 (USN) IMPERIAL BEACH NOUF (REAM FIELD) (KNRS)

TACAN NRS Chon 29	APCH CRS 258°	Pub./Idg THRE Appl Elev 24	4997 20
ATIS * /ASOS 276.2		SOCAL APP CON 125.15 317.55	IMPERIAL BEACH TOWER * 120.65 239.25
Max airspeed 90 KIAS.		MISSED APPROACH: Climb to 1600 via NRS TACAN R-078 to NRS, then via NRS R-273 to FOLTA, continue climb-in-hold to 1600. Remain within 5.2 DME when established in holding.	
GND CON 285.575		GND CON 285.575	



RADAR REQUIRED

EMERGENCY SAFE ALT 100 NM 13,600



CATEGORY	COPTER	
H-27	360-1	340 (400-1)

IMPERIAL BEACH, CALIFORNIA 32°34'N-117°07'W HIRL Rwy 9-27

Imperial Beach NOLF (REAM FIELD) (KNRS)
Copter Tacan Rwy 27
Amdt 4 20AUG15