

APP CRS 307°	Rwy Idg TDZE Apt Elev	6203 4840 4849
------------------------	-----------------------------	---

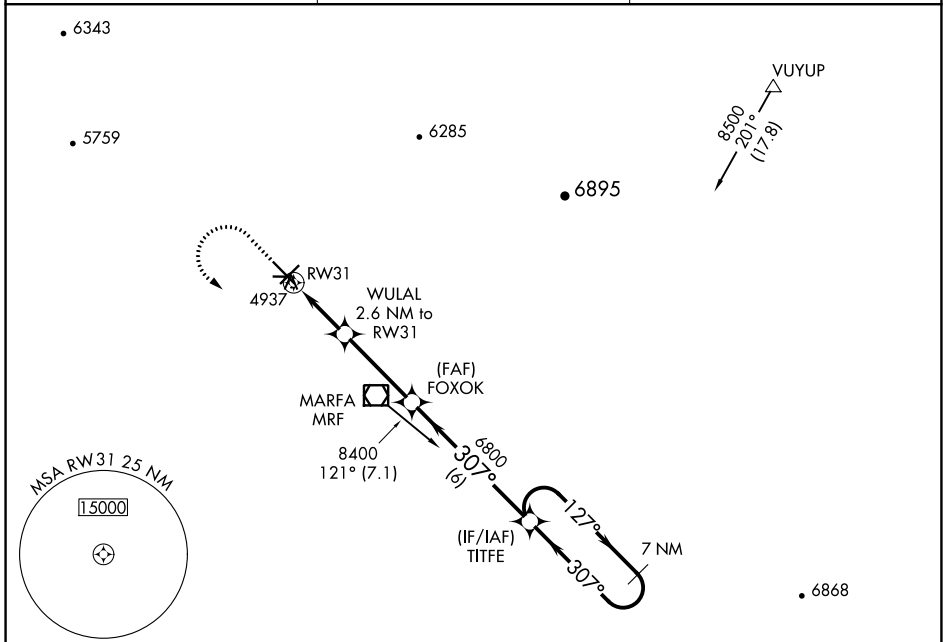
RNAV (GPS) RWY 31

MARFA MUNI (MRF)

When local altimeter setting not received, procedure NA.
 DME/DME RNP-0.3 NA.
 Visibility reduction by helicopters NA.

MISSED APPROACH: Climb to 5300 then climbing left turn to 9000 direct TITFE and hold, continue climb-in-hold to 9000.

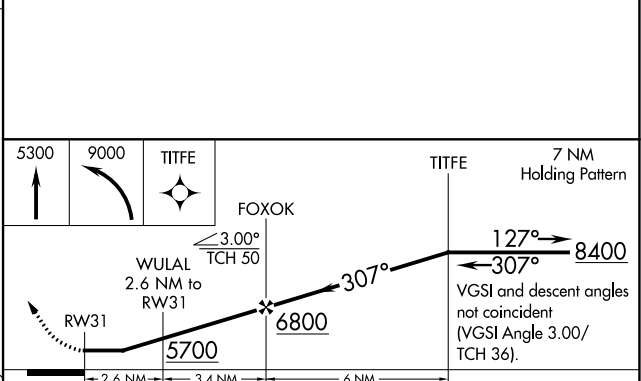
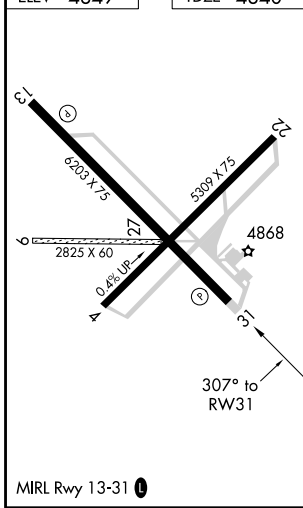
AWOS-3PT 134.025	ALBUQUERQUE CENTER 135.875 292.15	UNICOM 122.8 (CTAF)
----------------------------	---	-------------------------------



SC-3, 02 DEC 2021 to 30 DEC 2021

SC-3, 02 DEC 2021 to 30 DEC 2021

ELEV 4849	TDZE 4840
------------------	------------------



CATEGORY	A	B	C	D
LNAV MDA	5200-1 360 (400-1)			
CIRCLING	5280-1 431 (500-1)	5300-1 451 (500-1)	5300-1½ 451 (500-1½)	5400-2 551 (600-2)

VOR/DME MRF 115.9 Chan 106	APP CRS 313°	Rwy Idg TDZE Apt Elev 6203 4840 4849
--	------------------------	--

VOR RWY 31

MARFA MUNI (MRF)

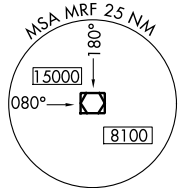
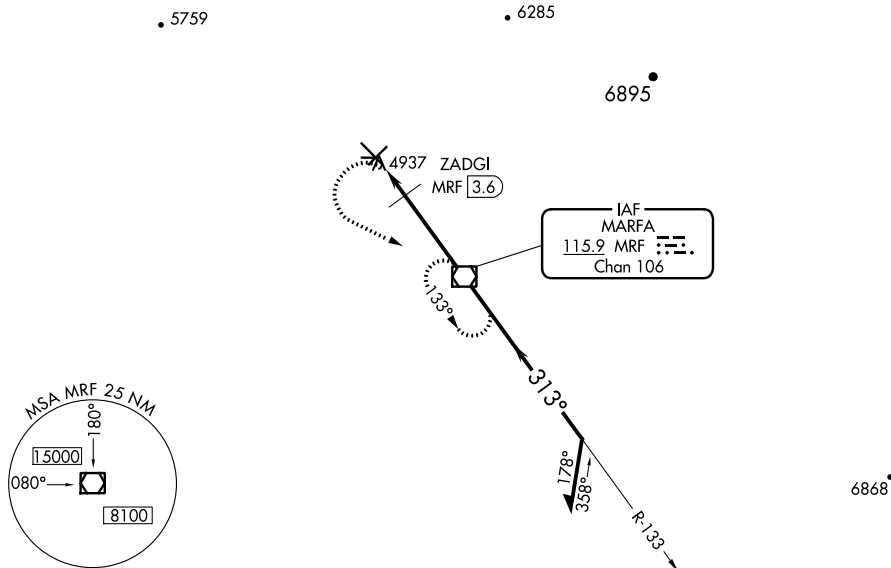
T When local altimeter setting not received, procedure NA.
Visibility reduction by helicopters NA.

MISSED APPROACH: Climbing left turn to 9000 direct MRF VOR/DME and hold, continue climb-in-hold to 9000.

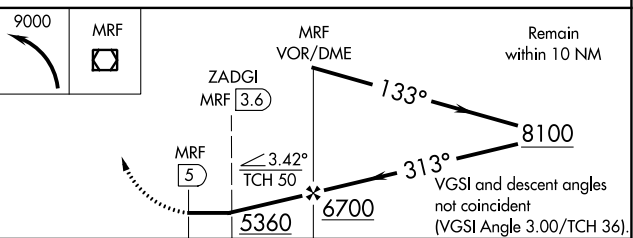
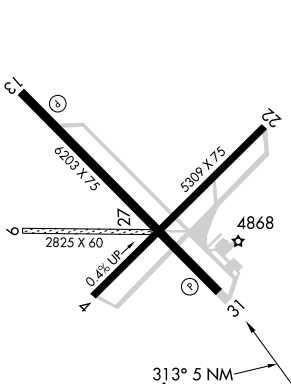
AWOS-3PT
134.025

ALBUQUERQUE CENTER
135.875 292.15

UNICOM
122.8 (CTAF)



ELEV 4849	TDZE 4840
-----------	-----------



CATEGORY	A	B	C	D
S-31	5360-1	520 (600-1)	5360-1½	520 (600-1½)
CIRCLING	5360-1	511 (600-1)	5360-1½	5400-2 551 (600-2)
ZADGI FIX MINIMUMS				
S-31	5200-1		360 (400-1)	
CIRCLING	5280-1 431 (500-1)	5300-1 451 (500-1)	5300-1½ 451 (500-1½)	5400-2 551 (600-2)

FAF to MAP 5 NM					
Knots	60	90	120	150	180
Min:Sec	5:00	3:20	2:30	2:00	1:40