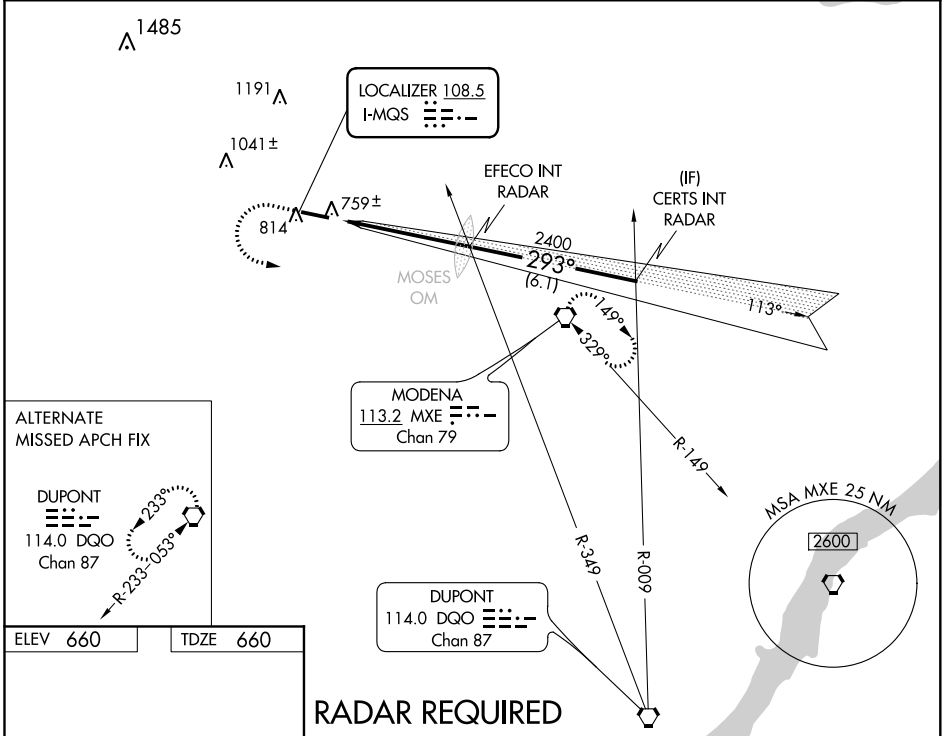


LOC I-MQS <b>108.5</b>	APP CRS <b>293°</b>	Rwy Idg TDZE Apt Elev	<b>5400</b> <b>660</b> <b>660</b>
---------------------------	------------------------	-----------------------------	---

**ILS or LOC RWY 29**  
CHESTER COUNTY G O CARLSON (MQS)

<p><b>⚠</b> Rwy 29 helicopter visibility reduction below ¾ SM NA. When local altimeter setting not received, use Heritage Fld altimeter setting and increase all DA 98 feet, and all MDA 100 feet, S-ILS 29 visibility ¼ mile all Cats, S-LOC 29 visibility Cats C and D ¼ mile, and Circling visibility Cat C and D ¼ mile.</p>		<p><b>MISSED APPROACH:</b> Climb to 1300 then climbing left turn to 2400 direct MXE VORTAC and hold.</p>	
AWOS-3 <b>126.25</b>	PHILADELPHIA APP CON <b>124.35 319.15</b>	CLNC DEL <b>125.6</b>	UNICOM <b>122.7 (CTAF) 0</b>



NE-4, 09 SEP 2021 to 07 OCT 2021

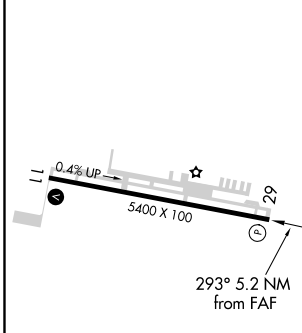
NE-4, 09 SEP 2021 to 07 OCT 2021

**ALTERNATE MISSED APCH FIX**

**DUPONT**  
114.0 DGO  
Chan 87

**DUPONT**  
114.0 DGO  
Chan 87

ELEV 660	TDZE 660
----------	----------

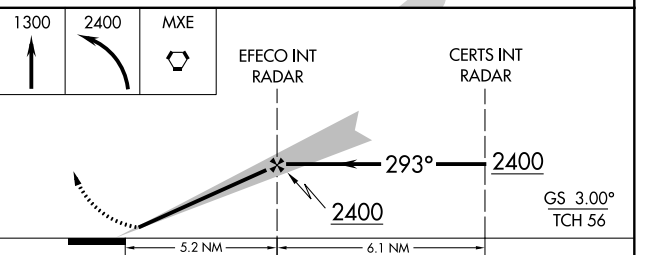


HIRL Rwy 11-29 0  
REIL Rwy 11-29 0

FAF to MAP 5.2 NM

Knots	60	90	120	150	180
Min:Sec	5:12	3:28	2:36	2:05	1:44

**RADAR REQUIRED**



CATEGORY	A	B	C	D
S-ILS 29	919-1 259 (300-1)			
S-LOC 29	1040-1 380 (400-1)			1040-1¼ 380 (400-1¼)
CIRCLING	1140-1 480 (500-1)	1240-1 580 (600-1)	1280-1¾ 620 (700-1¾)	1440-2½ 780 (800-2½)

WAAS CH <b>63006</b> W11A	APP CRS <b>113°</b>	Rwy Idg TDZE Apt Elev	<b>5400</b> <b>644</b> <b>660</b>
---------------------------------	------------------------	-----------------------------	---

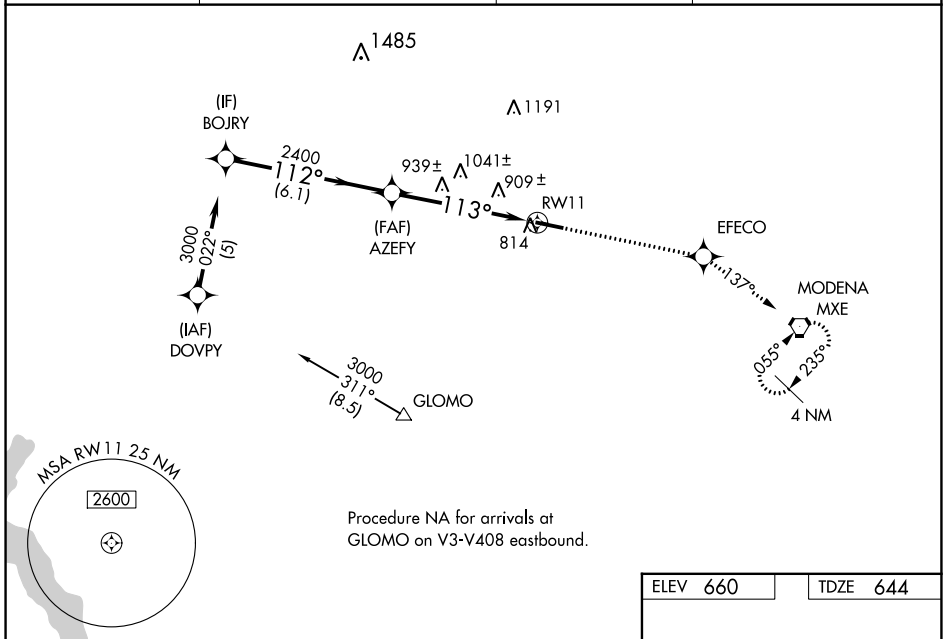
# RNAV (GPS) RWY 11

CHESTER COUNTY G O CARLSON (MQS)

**⚠** Baro-VNAV NA when using Heritage Fld altimeter setting. For uncompensated Baro-VNAV systems, LNAV/VNAV NA below -16°C (4°F) or above 47°C (116°F). DME/DME RNP-0.3 NA. Rwy 11 helicopter visibility reduction below 3/4 SM NA. When local altimeter setting not received, use Heritage Fld altimeter setting and increase all DA 98 feet and all MDA 100 feet, LPV visibility 1/2 mile all Cats, LNAV/VNAV visibility 1/2 mile all Cats, LNAV visibility Cats C and D 1/4 mile, and Circling visibility Cat C and D 1/4 mile.

**⚠** MISSED APPROACH: Climb to 2400 direct EFECO and on 137° track to MXE VORTAC and hold.

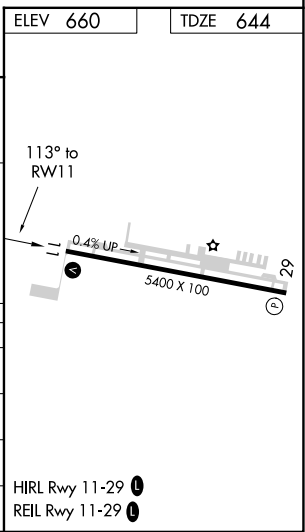
AWOS-3 <b>126.25</b>	PHILADELPHIA APP CON <b>124.35 319.15</b>	CLNC DEL <b>125.6</b>	UNICOM <b>122.7 (CTAF) 0</b>
-------------------------	--	--------------------------	---------------------------------



NE-4, 09 SEP 2021 to 07 OCT 2021

NE-4, 09 SEP 2021 to 07 OCT 2021

BOJRY	2400		EFECO	tr	MXE
	↑		✦	137°	⬠
Procedure Turn NA					
GP 3.00°					
TCH 42					
	6.1 NM		5.3 NM		
CATEGORY	A	B	C	D	
LPV DA	955-1		311 (300-1)		
LNAV/VNAV DA	1274-2 1/4		630 (700-2 1/4)		
LNAV MDA	1200-1	556 (600-1)	1200-1 1/2 556 (600-1 1/2)	1200-1 3/4 556 (600-1 3/4)	
CIRCLING	1200-1 540 (600-1)	1240-1 580 (600-1)	1280-1 3/4 620 (700-1 3/4)	1440-2 780 (800-2)	



WAAS CH <b>82506</b> <b>W29A</b>	APP CRS <b>293°</b>	Rwy Idg TDZE Apt Elev	<b>5400</b> <b>660</b> <b>660</b>
--	------------------------	-----------------------------	---

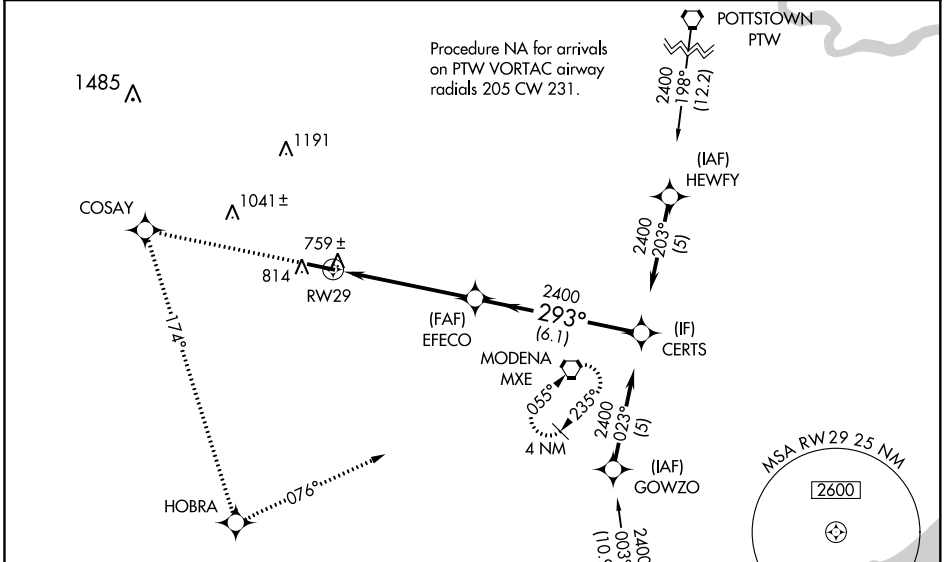
# RNAV (GPS) RWY 29

CHESTER COUNTY G O CARLSON (MQS)

**⚠** Baro-VNAV NA when using Heritage Fld altimeter setting. For uncompensated Baro-VNAV systems, LNAV/VNAV NA below -16°C (4°F) or above 47°C (116°F). DME/DME RNP-0.3 NA. When local altimeter setting not received, use Heritage Fld altimeter setting and increase all DA 98 feet and all MDA 100 feet, LPV visibility ¼ mile all Cats, LNAV/VNAV visibility ¼ mile all Cats, LNAV visibility Cats C and D ¼ mile, and circling visibility Cat C and D ¼ mile. VDP NA when using Heritage Fld altimeter setting. Rwy 29 helicopter visibility reduction below ¾ SM NA.

**⚠** MISSED APPROACH: Climb to 2400 direct COSAY and left turn on 174° track to HOBRA and left turn on 076° track to MXE VORTAC and hold.

AWOS-3 <b>126.25</b>	PHILADELPHIA APP CON <b>124.35 319.15</b>	CLNC DEL <b>125.6</b>	UNICOM <b>122.7 (CTAF) 0</b>
-------------------------	--	--------------------------	---------------------------------

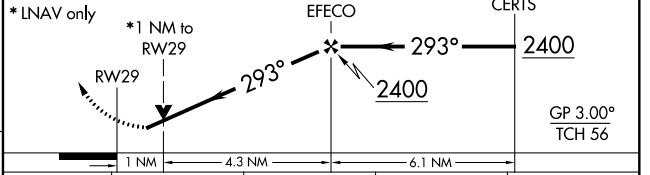
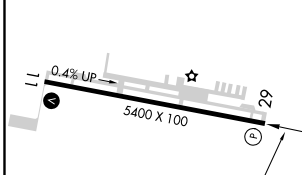
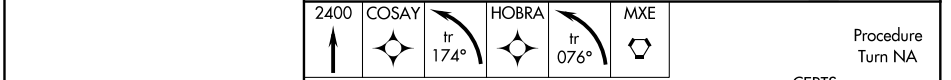


NE-4, 09 SEP 2021 to 07 OCT 2021

NE-4, 09 SEP 2021 to 07 OCT 2021

ELEV 660	TDZE 660
----------	----------

Procedure NA for arrivals on DGO VORTAC airway radials 309 CW 053.



CATEGORY	A	B	C	D
LPV DA		938-1	278 (300-1)	
LNAV/VNAV DA		1029-1¼	369 (400-1¼)	
LNAV MDA		1020-1	360 (400-1)	1020-1¼ 360 (400-1¼)
CIRCLING	1140-1 480 (500-1)	1240-1 580 (600-1)	1280-1¾ 620 (700-1¾)	1440-2½ 780 (800-2½)