

WAAS CH <b>72629</b> <b>W18A</b>	APP CRS <b>182°</b>	Rwy Idg TDZE <b>1305</b> Apt Elev <b>1305</b>	<b>5012</b>
--	------------------------	---	-------------

# RNAV (GPS) RWY 18

HAMILTON MUNI (MNZ)

RNP APCH-GPS.

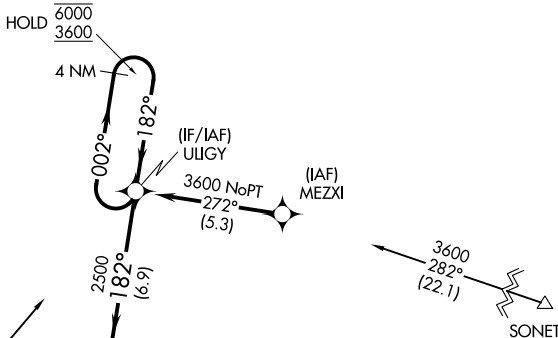
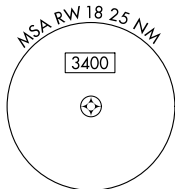
▼ Rwy 18 helicopter visibility reduction below ¼ SM NA.  
For uncompensated Baro-VNAV systems, LNAV/VNAV NA below -17°C or above 54°C.

MISSED APPROACH: Climb to 3100 direct USXEL and hold.

AWOS-3PT  
**118.525**

GRAY APP CON  
**120.075 323.15**

UNICOM  
**122.7 (CTAF) 0**



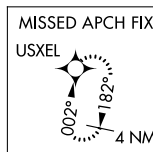
Procedure NA for arrivals at BUILT on V161 southbound.

Procedure NA for arrivals at SONET on V358 northeast bound.

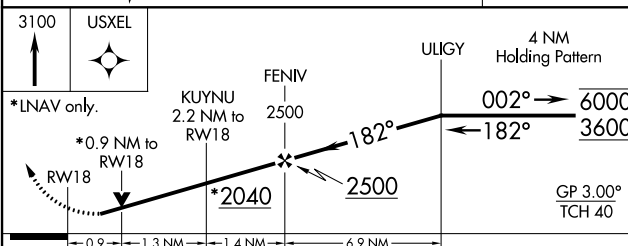
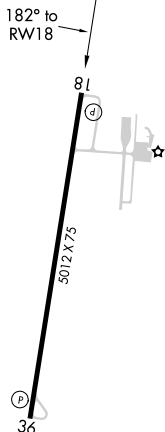
1760

BUILT

1386   
RWY 18   
1528   
KUYNU 2.2 NM to RWY 18



ELEV 1305 TDZE 1305



CATEGORY	A	B	C	D
LPV DA		1555-1	250 (300-1)	NA
LNAV/VNAV DA		1555-1	250 (300-1)	NA
LNAV MDA		1640-1	335 (400-1)	NA
CIRCLING	1680-1 375 (400-1)	1840-1 535 (600-1)	1960-1¾ 655 (700-1¾)	NA

MIRL Rwy 18-36

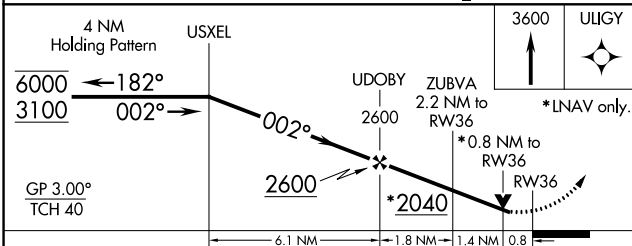
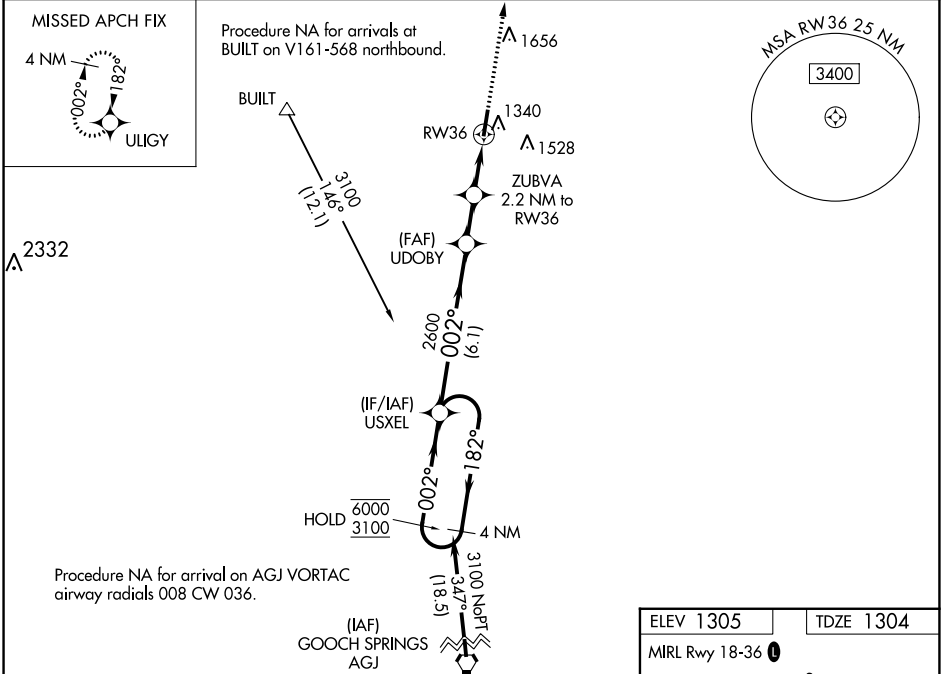
WAAS CH <b>50229</b> <b>W36A</b>	APP CRS <b>002°</b>	Rwy Idg TDZE <b>1304</b> Apt Elev <b>1305</b>
--	------------------------	---

# RNAV (GPS) RWY 36

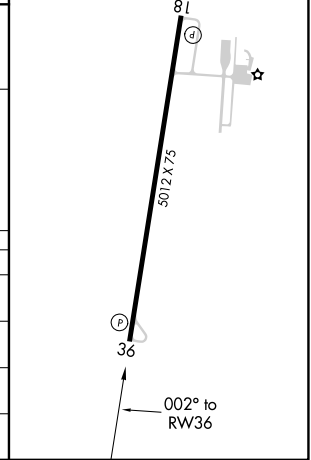
HAMILTON MUNI (MNZ)

RNP APCH-GPS. ▼ Rwy 36 helicopter visibility reduction below 3/4 SM NA. For uncompensated Baro-VNAV systems, LNAV/VNAV NA below -17°C or above 54°C.	MISSED APPROACH: Climb to 3600 direct ULIGY and hold.
--	---

AWOS-3PT <b>118.525</b>	GRAY APP CON <b>120.075 323.15</b>	UNICOM <b>122.7 (CTAF) 0</b>
----------------------------	---------------------------------------	---------------------------------



ELEV 1305	TDZE 1304
MIRL Rwy 18-36 0	



CATEGORY	A	B	C	D
LPV DA	1554-1	250 (300-1)		NA
LNAV/VNAV DA	1554-1	250 (300-1)		NA
LNAV MDA	1600-1	296 (300-1)		NA
CIRCLING	1680-1 375 (400-1)	1840-1 535 (600-1)	1960-1 3/4 655 (700-1 3/4)	NA

SC-3, 22 FEB 2024 to 21 MAR 2024

SC-3, 22 FEB 2024 to 21 MAR 2024