

WAAS CH 81832 W36A	APP CRS 356°	Rwy Idg TDZE Apt Elev	3100 99 103
--	------------------------	-----------------------------	--

RNAV (GPS) RWY 36

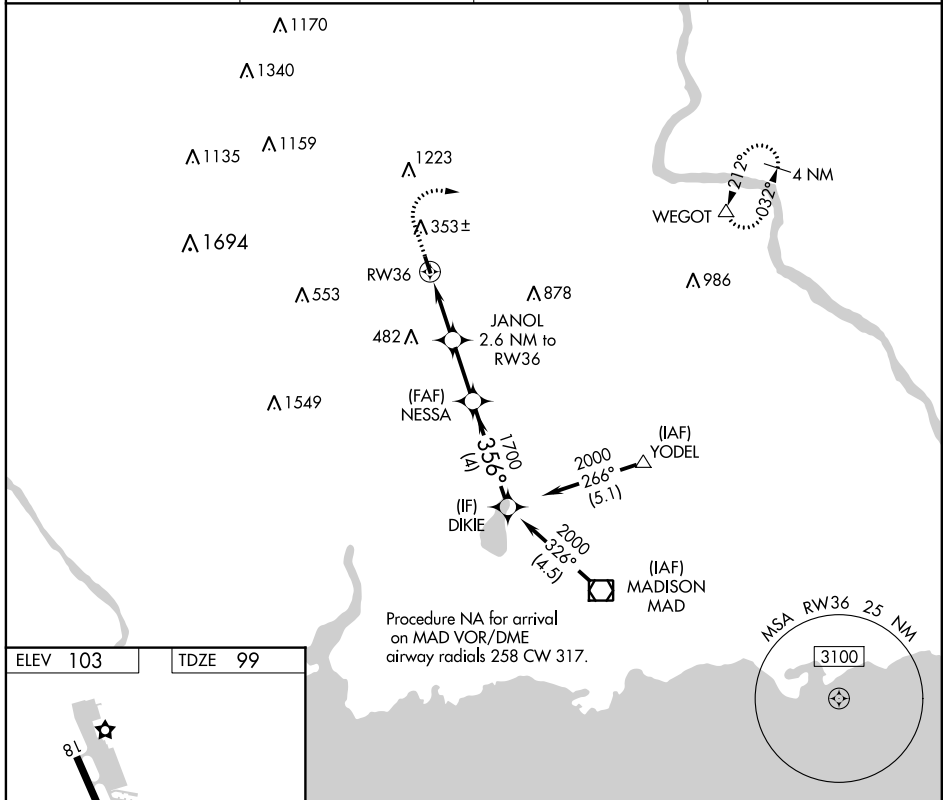
MERIDEN MARKHAM MUNI (MMMK)

RNP APCH.

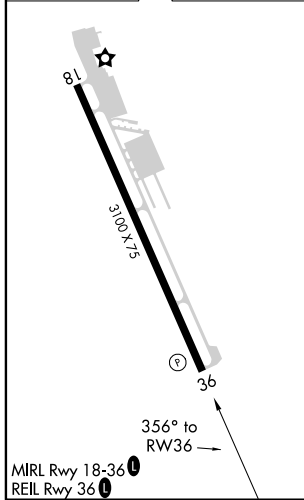
Procedure NA at night. Rwy 36 helicopter visibility reduction below 1 SM NA.

MISSED APPROACH: Climb to 800 then climbing right turn to 2500 direct WEGOT and hold.

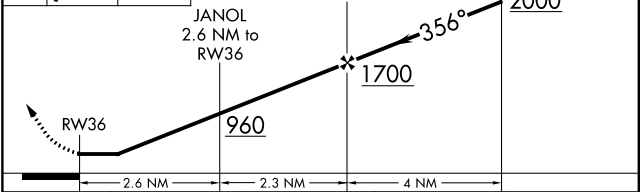
ASOS 134.925	YANKEE APP CON 127.8 269.325	CLNC DEL 120.65	UNICOM 123.05 (CTAF)
------------------------	--	---------------------------	--------------------------------



ELEV 103	TDZE 99
----------	---------



800	2500	WEGOT	Visual Segment - Obstacles.
↑	↷	△	



CATEGORY	A	B	C	D
LP MDA	660-1	561 (600-1)		NA
LNAV MDA	760-1	661 (700-1)		NA
C CIRCLING	780-1	677 (700-1)		NA

NE-1, 25 FEB 2021 to 25 MAR 2021

NE-1, 25 FEB 2021 to 25 MAR 2021

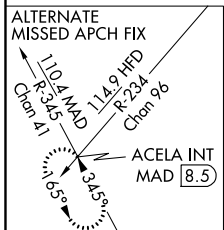
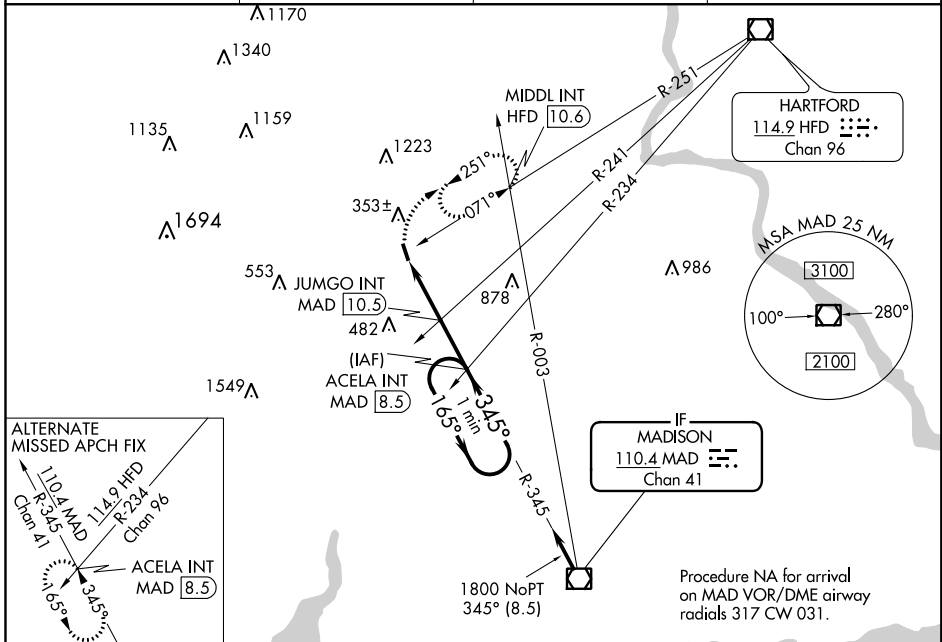
VOR/DME MAD	APP CRS	Rwy Idg	3100
110.4	345°	TDZE	99
Chan 41		Apt Elev	103

VOR RWY 36

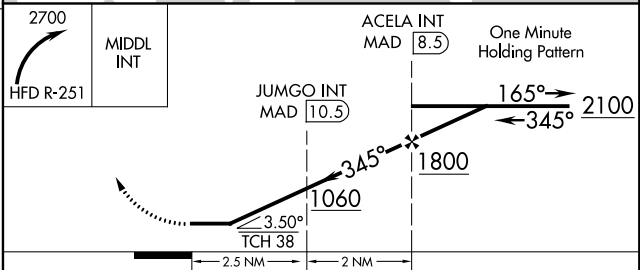
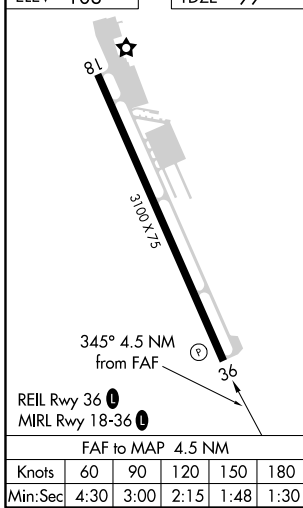
MERIDEN MARKHAM MUNI (MMK)

▼ Rwy 36 helicopter visibility reduction below 1 SM NA. Procedure NA at night.
▲ MISSED APPROACH: Climbing right turn to 2700 on HFD VOR/DME R-251 to MIDL INT/HFD 10.6 DME and hold, continue climb-in-hold to 2700.

ASOS	YANKEE APP CON	CLNC DEL	UNICOM
134.925	127.8 269.325	120.65	123.05 (CTAF) ①



ELEV 103	TDZE 99
----------	---------



CATEGORY	A	B	C	D
S-36	1060-1¼ 961 (1000-1½)	1060-1½ 961 (1000-1½)		NA
C CIRCLING	1060-1¼ 957 (1000-1½)	1060-1½ 957 (1000-1½)		NA
JUMGO FIX MINIMUMS (DUAL VOR RECEIVERS OR DME REQUIRED)				
S-36	880-1 781 (800-1)	880-1¼ 781 (800-1½)		NA
C CIRCLING	880-1 777 (800-1)	920-1¼ 817 (900-1½)		NA

NE-1, 25 FEB 2021 to 25 MAR 2021

NE-1, 25 FEB 2021 to 25 MAR 2021