

WAAS CH <b>93516</b> <b>W17A</b>	APP CRS <b>171°</b>	Rwy Idg <b>5000</b> TDZE <b>5</b> Apt Elev <b>5</b>
--	------------------------	---

# RNAV (GPS) RWY 17

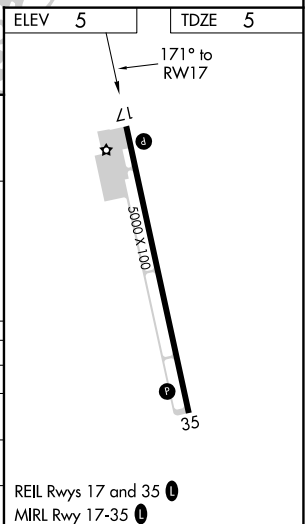
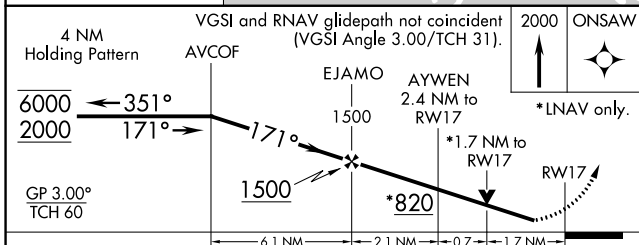
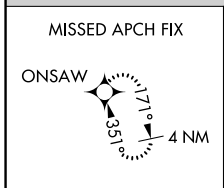
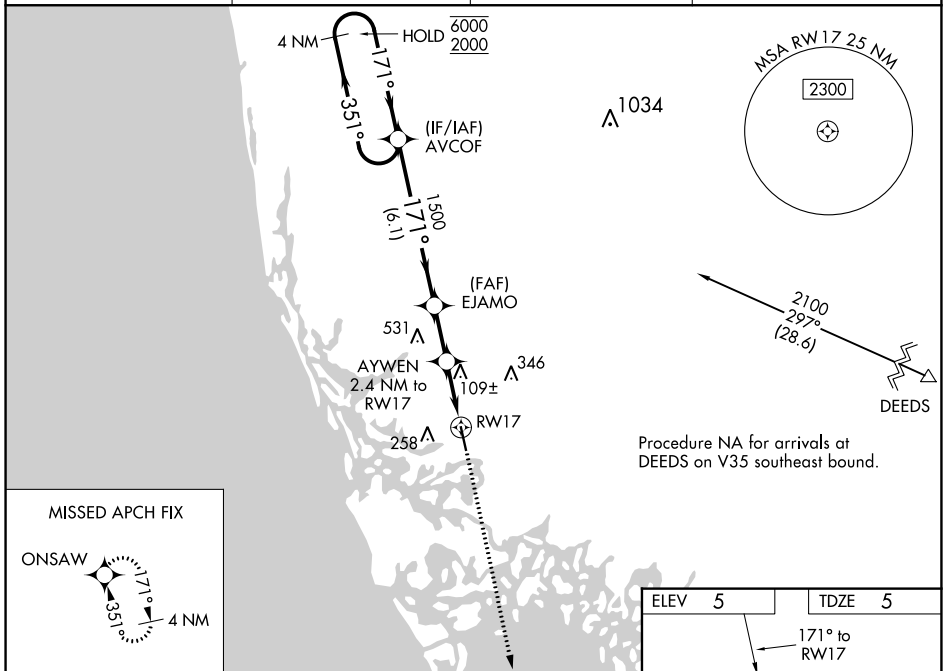
MARCO ISLAND EXECUTIVE (MKY)

PBN APCH.

Baro-VNAV and VDP NA when using Naples altimeter setting.  
Rwy 17 helicopter visibility reduction below  $\frac{3}{4}$  SM NA. For uncompensated Baro-VNAV systems, LNAV/VNAV NA below 2°C or above 54°C.  
When local altimeter setting not received, use Naples altimeter setting and increase all DA 26 feet and all MDA 40 feet; increase LNAV/VNAV all Cats visibility  $\frac{1}{4}$  SM.

MISSED APPROACH: Climb to 2000 direct ONSAW and hold.

AWOS-3PT <b>120.075</b>	FORT MYERS APP CON * <b>124.125 371.85</b>	CLNC DEL <b>120.8</b>	UNICOM <b>122.7</b> (CTAF) <b>0</b>
----------------------------	---	--------------------------	--



CATEGORY	A	B	C	D
LPV DA		300-1	295 (300-1)	
LNAV/VNAV DA		458-1½	453 (500-1½)	
LNAV MDA	560-1	555 (600-1)	560-1½ 555 (600-1½)	560-1¾ 555 (600-1¾)
CIRCLING	620-1	615 (700-1)	620-1¾ 615 (700-1¾)	620-2 615 (700-2)

SE-3, 05 NOV 2020 to 03 DEC 2020

SE-3, 05 NOV 2020 to 03 DEC 2020

WAAS CH <b>53316</b> <b>W35A</b>	APP CRS <b>351°</b>	Rwy Idg TDZE Apt Elev	<b>5000</b> <b>5</b> <b>5</b>
--	------------------------	-----------------------------	-------------------------------------

# RNAV (GPS) RWY 35

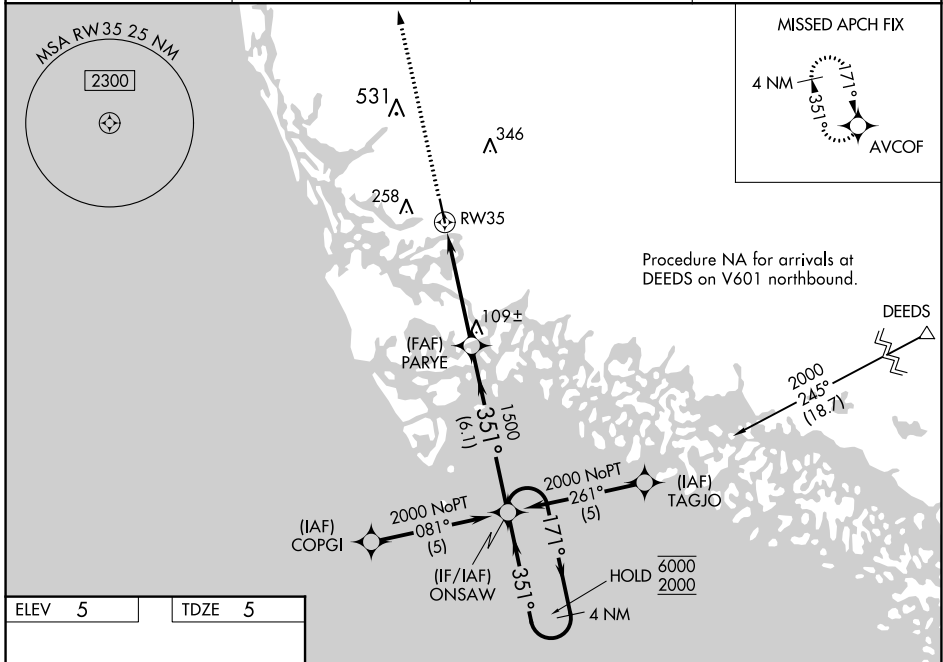
MARCO ISLAND EXECUTIVE (MKY)

PBN APCH.

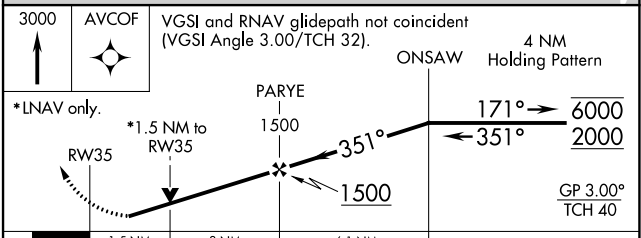
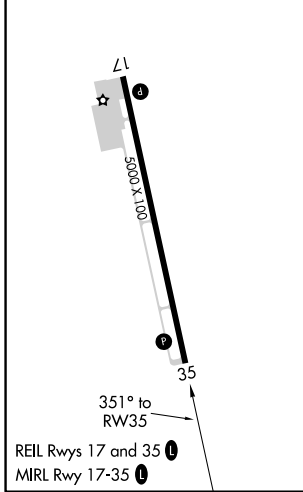
**▼** Baro-VNAV and VDP NA when using Naples altimeter setting. Rwy 35 helicopter visibility reduction below  $\frac{3}{4}$  SM NA. When local altimeter setting not received, use Naples altimeter setting and increase LPV DA to 312 feet, LNAV/VNAV DA to 420 feet, and all MDA 40 feet. For uncompensated Baro-VNAV systems, LNAV/VNAV NA below 2°C or above 54°C.

**MISSED APPROACH:** Climb to 3000 direct AVCOF and hold, continue climb-in-hold to 3000.

AWOS-3PT <b>120.075</b>	FORT MYERS APP CON * <b>124.125 371.85</b>	CLNC DEL <b>120.8</b>	UNICOM <b>122.7</b> (CTAF) <b>0</b>
----------------------------	---	--------------------------	--



ELEV 5	TDZE 5
--------	--------



CATEGORY	A	B	C	D
LPV DA	286-1 281 (300-1)			
LNAV/VNAV DA	394-1½ 389 (400-1½)			
LNAV MDA	520-1	515 (600-1)	520-1½ 515 (600-1½)	520-1¾ 515 (600-1¾)
CIRCLING	620-1	615 (700-1)	620-1¾ 615 (700-1¾)	620-2 615 (700-2)

SE-3, 05 NOV 2020 to 03 DEC 2020

SE-3, 05 NOV 2020 to 03 DEC 2020