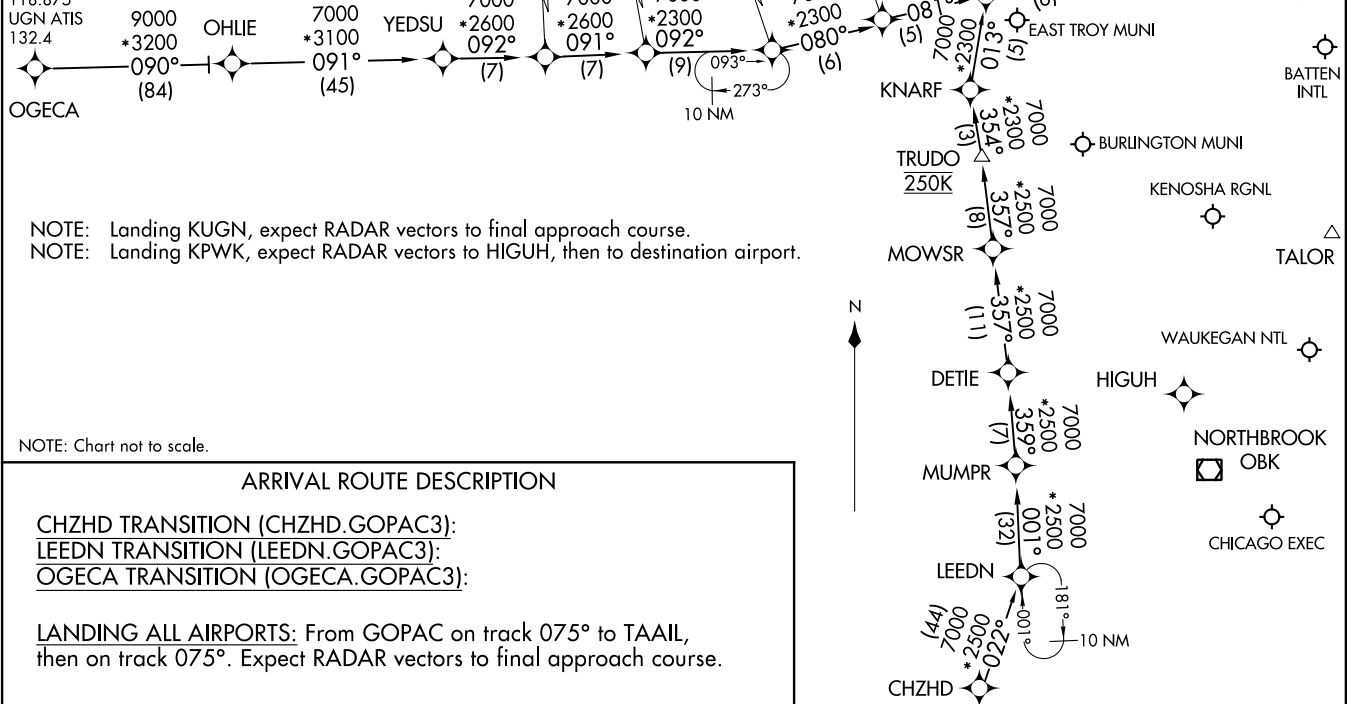


GOPAC THREE ARRIVAL (RNAV)
(GOPAC.GOPAC3) 15JUN23

MILWAUKEE APP CON
126.5 307.0
ENW ATIS
127.175
MKE D-ATIS
126.4
MWC ATIS
128.3
PWK ATIS
124.2
UES ATIS
118.875
UGN ATIS
132.4

RNAV 1 - DME/DME/IRU OR GPS.
RADAR required.

HARTFORD MUNI
WAUKESHA COUNTY
WEST BEND MUNI
LAWRENCE J TIMMERMAN
Ldg KRAC, KBUU, KPWK, 57C, KMKE, KHXF,
KENW, KMWC, KUGN, KUES, and KETB.



NOTE: Landing KUGN, expect RADAR vectors to final approach course.
NOTE: Landing KPWK, expect RADAR vectors to HIGUH, then to destination airport.

NOTE: Chart not to scale.

ARRIVAL ROUTE DESCRIPTION

CHZHD TRANSITION (CHZHD.GOPAC3):
LEEDN TRANSITION (LEEDN.GOPAC3):
OGECA TRANSITION (OGECA.GOPAC3):

LANDING ALL AIRPORTS: From GOPAC on track 075° to TAAIL,
then on track 075°. Expect RADAR vectors to final approach course.

MILWAUKEE, WISCONSIN

(GOPAC.GOPAC3) 23166
GOPAC THREE ARRIVAL (RNAV)

AI-262 (FAA)

MILWAUKEE, WISCONSIN