

CHIEF NINE DEPARTURE

AL-213 (FAA)

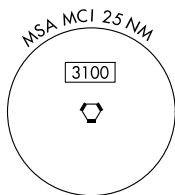
CHARLES B WHEELER DOWNTOWN (MKC)

KANSAS CITY, MISSOURI

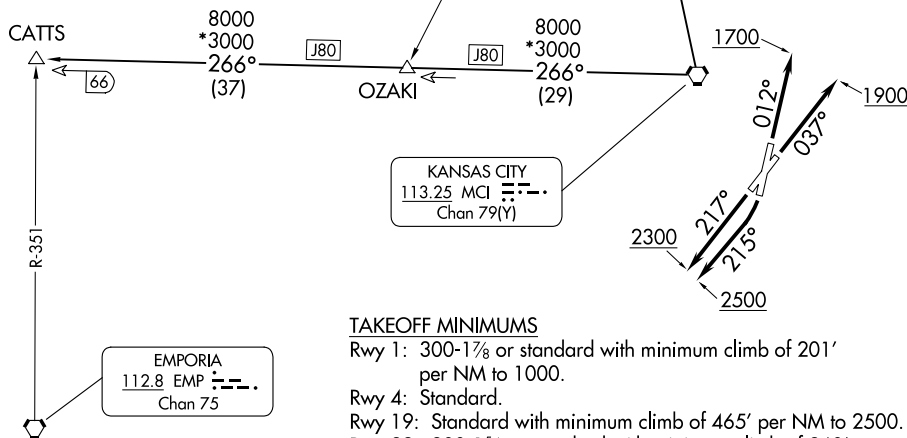
**TOP ALTITUDE:
10000**

RADAR required.

KANSAS CITY DEP CON
118.4 307.35
ATIS
120.75
CLNC DEL
121.9



ST. JOSEPH
115.5 STJ
Chan 102



TAKEOFF MINIMUMS

- Rwy 1: 300-1 $\frac{3}{8}$ or standard with minimum climb of 201' per NM to 1000.
- Rwy 4: Standard.
- Rwy 19: Standard with minimum climb of 465' per NM to 2500.
- Rwy 22: 300-1 $\frac{3}{8}$ or standard with minimum climb of 260' per NM to 1000.

NOTE: Chart not to scale.

DEPARTURE ROUTE DESCRIPTION

- TAKEOFF RUNWAY 1: Climb on heading 012° to 1700, thence. . .
 - TAKEOFF RUNWAY 4: Climb on heading 037° to 1900, thence. . .
 - TAKEOFF RUNWAY 19: Climbing right turn heading 215° to 2500, thence. . .
 - TAKEOFF RUNWAY 22: Climb on heading 217° to 2300, thence. . .
- . . . climb on assigned heading for RADAR vectors to appropriate route. Maintain 10000 or as assigned by ATC, expect filed altitude 10 minutes after departure.

CATTS TRANSITION (CHIEF9.CATTS): From over MCI VORTAC on MCI R-266 to CATTS.

ST. JOSEPH TRANSITION (CHIEF9.STJ): From over MCI VORTAC on MCI R-343 and STJ R-160 to STJ VORTAC.

CHIEF NINE DEPARTURE

(CHIEF9.MCI) 05OCT23

KANSAS CITY, MISSOURI

CHARLES B WHEELER DOWNTOWN (MKC)

NC-3, 22 FEB 2024 to 21 MAR 2024

NC-3, 22 FEB 2024 to 21 MAR 2024

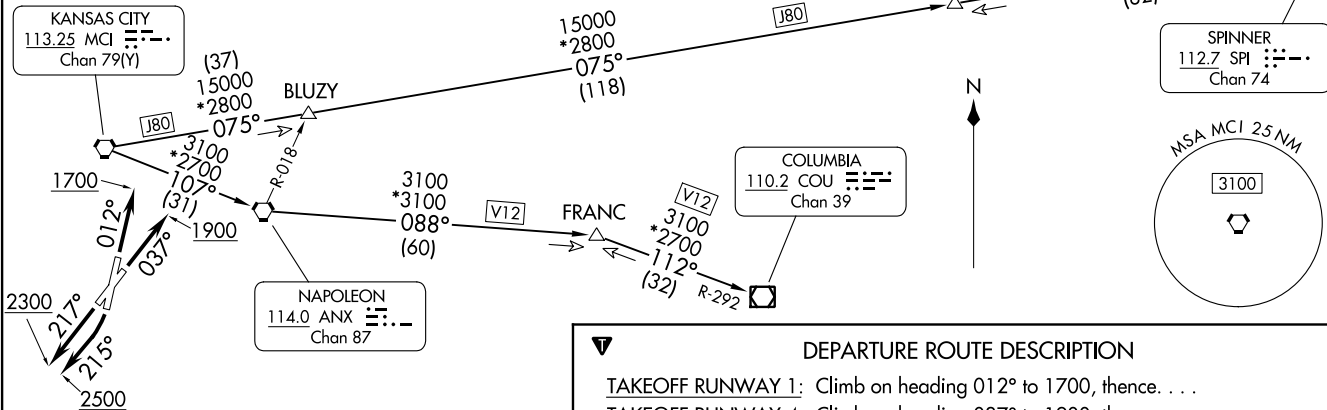
LAKES FIVE DEPARTURE
(LAKES5.MCI) 05OCT23

CHARLES B WHEELER DOWNTOWN (MIKC)
KANSAS CITY, MISSOURI

KANSAS CITY DEP CON
118.4 307.35
ATIS
120.75
CLNC DEL
121.9

**TOP ALTITUDE:
10000**

RADAR required. DME required.



TAKEOFF MINIMUMS

- Rwy 1: 300-1 $\frac{7}{8}$ or standard with minimum climb of 201' per NM to 1000.
- Rwy 4: Standard.
- Rwy 19: Standard with minimum climb of 465' per NM to 2500.
- Rwy 22: 300-1 $\frac{5}{8}$ or standard with minimum climb of 260' per NM to 1000.

NOTE: Chart not to scale.

DEPARTURE ROUTE DESCRIPTION

TAKEOFF RUNWAY 1: Climb on heading 012° to 1700, thence. . .

TAKEOFF RUNWAY 4: Climb on heading 037° to 1900, thence. . .

TAKEOFF RUNWAY 19: Climbing right turn heading 215° to 2500, thence. . .

TAKEOFF RUNWAY 22: Climb on heading 217° to 2300, thence. . .

. . . climb on assigned heading for RADAR vectors to appropriate route. Maintain 10000 or as assigned by ATC. Expect filed altitude 10 minutes after departure.

COLUMBIA TRANSITION (LAKES5.COU): From over MCI VORTAC on MCI R-107 to ANX VORTAC, then on ANX R-088 and COU R-292 to COU VOR/DME.

FRANC TRANSITION (LAKES5.FRANC): From over MCI VORTAC on MCI R-107 to ANX VORTAC, then on ANX R-088 to FRANC.

SPINNER TRANSITION (LAKES5.SPI): From over MCI VORTAC on MCI R-075 and SPI R-265 to TWAIN, then on SPI R-265 to SPI VORTAC.

TWAIN TRANSITION (LAKES5.TWAIN): From over MCI VORTAC on MCI R-075 and SPI R-265 to TWAIN.

(LAKES5.MCI) 23278
LAKES FIVE DEPARTURE

AL-213 (FAA)
CHARLES B WHEELER DOWNTOWN (MIKC)
KANSAS CITY, MISSOURI

(RACER8.MCI) 23278

RACER EIGHT DEPARTURE

AL-213 (FAA)

CHARLES B WHEELER DOWNTOWN (MKC)
KANSAS CITY, MISSOURI

TOP ALTITUDE:
10000

RADAR required.

KANSAS CITY DEP CON
118.4 307.35
ATIS
120.75
CLNC DEL
121.9

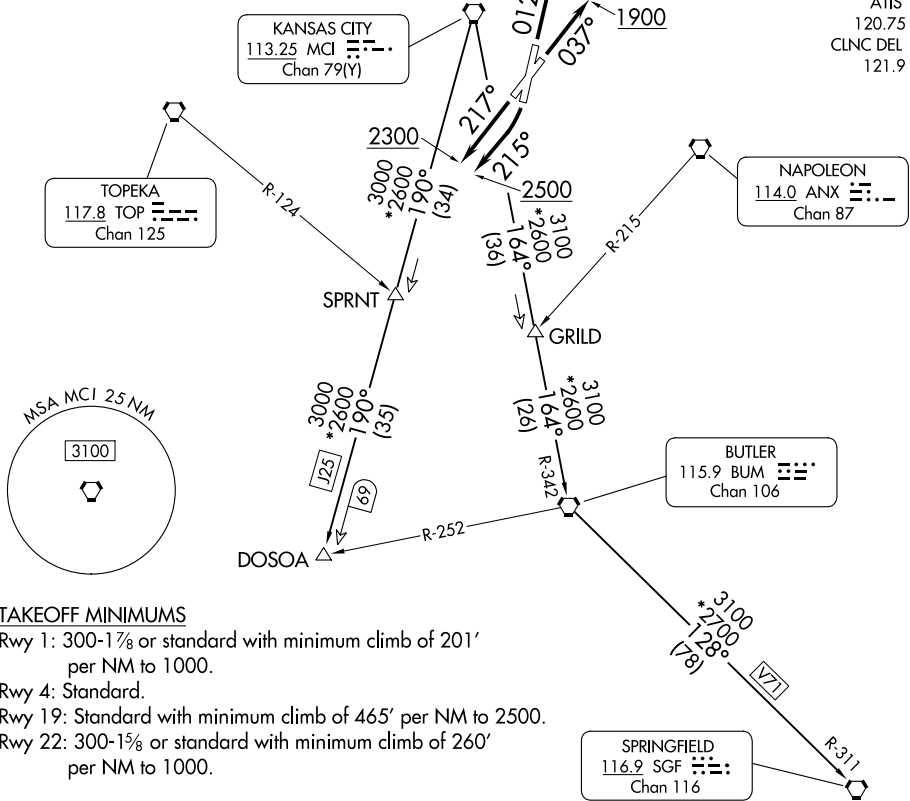
KANSAS CITY
113.25 MCI
Chan 79(Y)

TOPEKA
117.8 TOP
Chan 125

NAPOLEON
114.0 ANX
Chan 87

BUTLER
115.9 BUM
Chan 106

SPRINGFIELD
116.9 SGF
Chan 116



TAKEOFF MINIMUMS

Rwy 1: 300-1 $\frac{7}{8}$ or standard with minimum climb of 201' per NM to 1000.

Rwy 4: Standard.

Rwy 19: Standard with minimum climb of 465' per NM to 2500.

Rwy 22: 300-1 $\frac{7}{8}$ or standard with minimum climb of 260' per NM to 1000.

NOTE: Chart not to scale.

DEPARTURE ROUTE DESCRIPTION

TAKEOFF RUNWAY 1: Climb on heading 012° to 1700, thence. . .

TAKEOFF RUNWAY 4: Climb on heading 037° to 1900, thence. . .

TAKEOFF RUNWAY 19: Climbing right turn heading 215° to 2500, thence. . .

TAKEOFF RUNWAY 22: Climb on heading 217° to 2300, thence. . .

. . . climb on assigned heading for RADAR vectors to appropriate route. Maintain 10000 or as assigned by ATC, expect filed altitude 10 minutes after departure.

BUTLER TRANSITION (RACER8.BUM): From over MCI VORTAC on MCI R-164 and BUM R-342 to BUM VORTAC.

DOSOA TRANSITION (RACER8.DOSOA): From over MCI VORTAC on MCI R-190 to DOSOA.

SPRINGFIELD TRANSITION (RACER8.SGF): From over MCI VORTAC on MCI R-164 and BUM R-342 to BUM VORTAC, then on BUM R-128 and SGF R-311 to SGF VORTAC.

RACER EIGHT DEPARTURE

(RACER8.MCI) 05OCT23

KANSAS CITY, MISSOURI
CHARLES B WHEELER DOWNTOWN (MKC)

NC-3, 22 FEB 2024 to 21 MAR 2024

NC-3, 22 FEB 2024 to 21 MAR 2024

ROYAL ONE DEPARTURE
(ROYAL1.MCI) 050CT23

KANSAS CITY, MISSOURI
CHARLES B WHEELER DOWNTOWN (MKC)

KANSAS CITY DEP CON
118.4 307.35
ATIS
120.75
CLNC DEL
121.9

**TOP ALTITUDE:
10000**

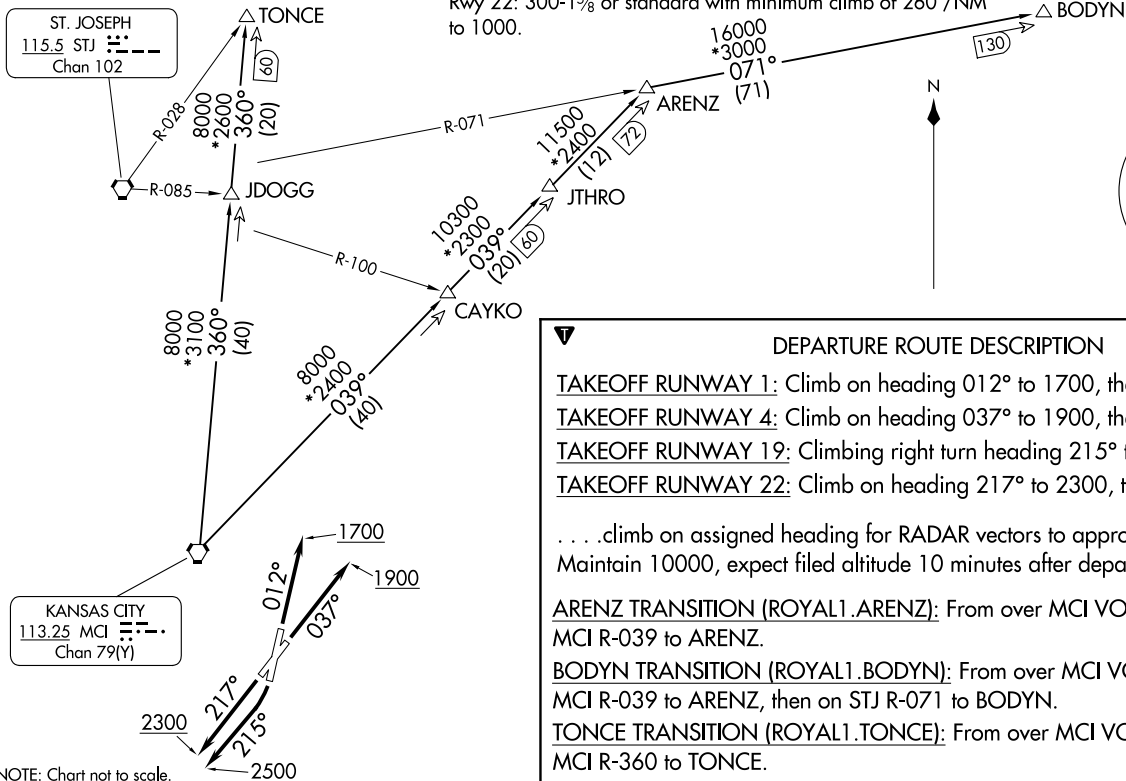
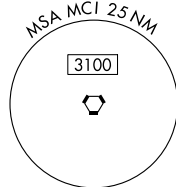
TAKEOFF MINIMUMS

Rwy 1: 300-1 $\frac{1}{8}$ or standard with minimum climb of 201' per NM to 1000.
Rwy 4: Standard.
Rwy 19: Standard with minimum climb of 465'/NM to 2500.
Rwy 22: 300-1 $\frac{1}{8}$ or standard with minimum climb of 260'/NM to 1000.

RADAR and DME required.

OTTUMWA
111.6 OTM ---
Chan 53

ST. JOSEPH
115.5 STJ ---
Chan 102



NOTE: Chart not to scale.

DEPARTURE ROUTE DESCRIPTION

TAKEOFF RUNWAY 1: Climb on heading 012° to 1700, thence. . . .

TAKEOFF RUNWAY 4: Climb on heading 037° to 1900, thence. . . .

TAKEOFF RUNWAY 19: Climbing right turn heading 215° to 2500, thence. . . .

TAKEOFF RUNWAY 22: Climb on heading 217° to 2300, thence. . . .

. . . .climb on assigned heading for RADAR vectors to appropriate route. Maintain 10000, expect filed altitude 10 minutes after departure.

ARENZ TRANSITION (ROYAL1.ARENZ): From over MCI VORTAC on MCI R-039 to ARENZ.

BODYN TRANSITION (ROYAL1.BODYN): From over MCI VORTAC on MCI R-039 to ARENZ, then on STJ R-071 to BODYN.

TONCE TRANSITION (ROYAL1.TONCE): From over MCI VORTAC on MCI R-360 to TONCE.

(ROYAL1.MCI) 23278
ROYAL ONE DEPARTURE

AL-213 (FAA)

CHARLES B WHEELER DOWNTOWN (MKC)
KANSAS CITY, MISSOURI

(TIFTO8.MCI) 23278

TIFTO EIGHT DEPARTURE

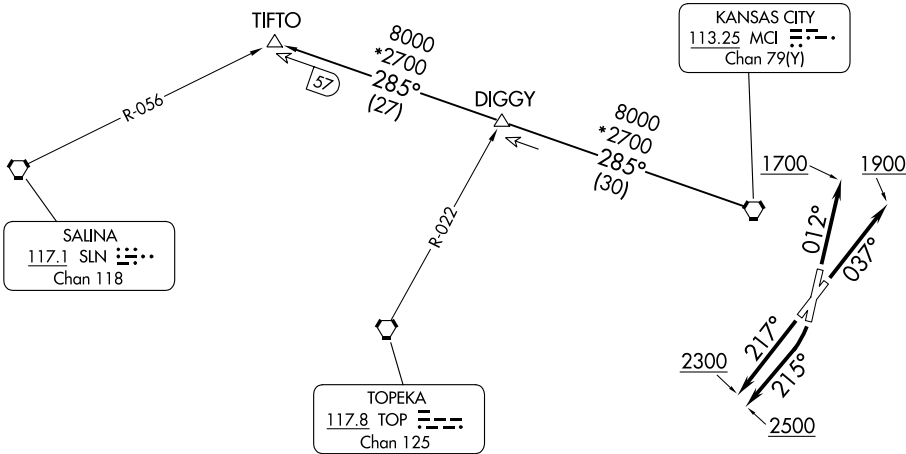
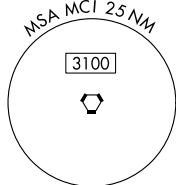
AL-213 (FAA)

CHARLES B WHEELER DOWNTOWN (MKC)
KANSAS CITY, MISSOURI

**TOP ALTITUDE:
10000**

RADAR and DME required.

KANSAS CITY DEP CON
118.4 307.35
ATIS
120.75
CLNC DEL
121.9



TAKEOFF MINIMUMS

- Rwy 1: 300-1 $\frac{1}{8}$ or standard with minimum climb of 201' per NM to 1000.
- Rwy 4: Standard.
- Rwy 19: Standard with minimum climb of 465'/NM to 2500.
- Rwy 22: 300-1 $\frac{1}{8}$ or standard with minimum climb of 260'/NM to 1000.

NOTE: Chart not to scale

DEPARTURE ROUTE DESCRIPTION

TAKEOFF RUNWAY 1: Climb on heading 012° to 1700, thence. . .

TAKEOFF RUNWAY 4: Climb on heading 037° to 1900, thence. . .

TAKEOFF RUNWAY 19: Climbing right turn heading 215° to 2500, thence. . .

TAKEOFF RUNWAY 22: Climb on heading 217° to 2300, thence. . .

. . . climb on assigned heading for RADAR vectors to appropriate route. Maintain 10000, expect filed altitude 10 minutes after departure.

TIFTO TRANSITION (TIFTO8.TIFTO): From over MCI VORTAC on MCI R-285 to TIFTO.

TIFTO EIGHT DEPARTURE

(TIFTO8.MCI) 05OCT23

KANSAS CITY, MISSOURI
CHARLES B WHEELER DOWNTOWN (MKC)

NC-3, 22 FEB 2024 to 21 MAR 2024

NC-3, 22 FEB 2024 to 21 MAR 2024

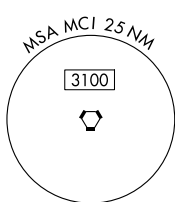
WILDCAT SIX DEPARTURE

AL-213 (FAA)

CHARLES B WHEELER DOWNTOWN (MKC)
KANSAS CITY, MISSOURI

KANSAS CITY DEP CON
118.4 307.35
ATIS
120.75
CLNC DEL
121.9

RADAR required.



ST JOSEPH
115.5 STJ ---
Chan 102

TOP ALTITUDE:
10000

KANSAS CITY
113.25 MCI ---
Chan 79(Y)

SALINA
117.1 SLN ---
Chan 118

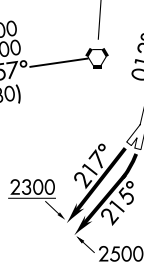
*3100 when using Salina
or Wichita Transition.

R-073
4500
*3100
257°
(79)

KENTN

J24
4500
*2600
257°
(30)
TYTUS

1700
1900



EMPORIA
112.8 EMP ---
Chan 75

TAKEOFF MINIMUMS

- Rwy 1: 300-1 $\frac{1}{8}$ or standard with minimum climb of 201' per NM to 1000.
- Rwy 4: Standard
- Rwy 19: Standard with minimum climb of 465'/NM to 2500.
- Rwy 22: 300-1 $\frac{1}{8}$ or standard with minimum climb of 260'/NM to 1000.

NOTE: Chart not to scale.

NC-3, 22 FEB 2024 to 21 MAR 2024

NC-3, 22 FEB 2024 to 21 MAR 2024

DEPARTURE ROUTE DESCRIPTION

TAKEOFF RUNWAY 1: Climb on heading 012° to 1700, thence. . .

TAKEOFF RUNWAY 4: Climb on heading 037° to 1900, thence. . .

TAKEOFF RUNWAY 19: Climbing right turn heading 215° to 2500, thence. . .

TAKEOFF RUNWAY 22: Climb on heading 217° to 2300, thence. . .

. . . climb on assigned heading for RADAR vectors to appropriate route. Maintain 10000, expect filed altitude 10 minutes after departure.

KENTN TRANSITION (WLDCT6.KENTN): From over MCI VORTAC on MCI R-257 to KENTN.

SALINA TRANSITION (WLDCT6.SLN): From over MCI VORTAC on MCI R-257 and SLN R-073 to SLN VORTAC.

WICHITA TRANSITION (WLDCT6.ICT): From over MCI VORTAC on MCI R-257 to KENTN, then on ICT R-035 to ICT VORTAC.

WILDCAT SIX DEPARTURE

(WLDCT6.MCI) 05OCT23

KANSAS CITY, MISSOURI
CHARLES B WHEELER DOWNTOWN (MKC)