

LOC I-JNK 109.1	APP CRS 319°	Rwy Idg 6500
		TDZE 937
		Apt Elev 937

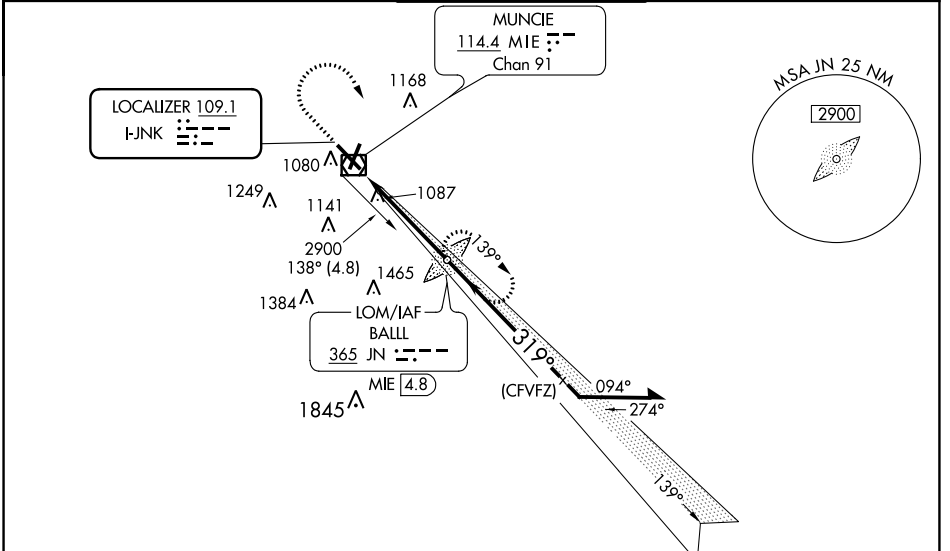
ILS or LOC RWY 32

DELAWARE COUNTY RGNL (MIE)

⚠ When control tower closed, except for operations with approved weather reporting use Fort Wayne altimeter setting. For inop MALSR when using Fort Wayne altimeter setting minimums, increase S-ILS 32 visibility to 1 SM. When local altimeter setting not received, use Fort Wayne altimeter setting: increase DA to 1257 feet and visibility all Cats 1/4 SM; increase all MDAs 120 feet and visibility Cat C 5/8 SM, Cat D 1 1/8 SM. VDP NA when using Fort Wayne altimeter setting.

MALSR
 MISSED APPROACH: Climb to 1460 then climbing right turn to 2900 direct BALL LOM and hold.

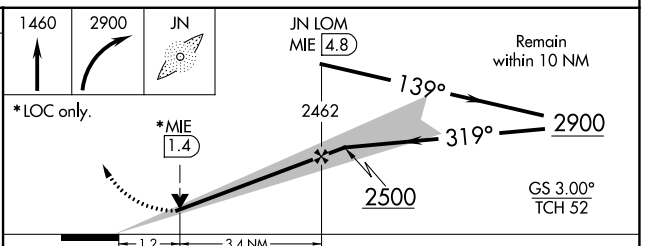
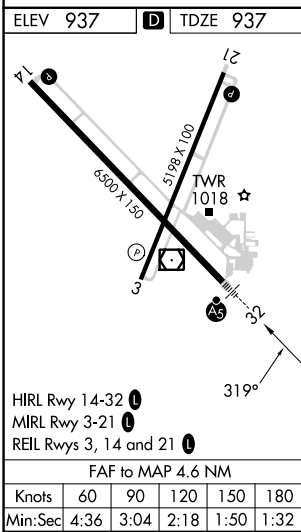
ATIS 133.25	INDIANAPOLIS APP CON 120.65 317.8	MUNCIE TOWER ★ 120.1 (CTAF) 0	GND CON 121.9	UNICOM 122.95
-----------------------	---	---	-------------------------	-------------------------



EC-2, 22 FEB 2024 to 21 MAR 2024

EC-2, 22 FEB 2024 to 21 MAR 2024

ADF or DME REQUIRED



CATEGORY	A	B	C	D
S-ILS 32	1137-1/2 200 (200-1/2)			
S-LOC 32	1380-1/2	443 (500-1/2)	1380-7/8	443 (500-7/8)
C CIRCLING	1460-1	523 (600-1)	1500-1 1/2 563 (600-1 1/2)	1600-2 663 (700-2)
FORT WAYNE ALTIMETER SETTING MINIMUMS				
S-ILS 32	1257-5/8 320 (400-5/8)			
S-LOC 32	1520-1/2	583 (600-1/2)	1520-1 1/2 583 (600-1 1/2)	1520-2 1/2 583 (600-2 1/2)
C CIRCLING	1580-1	643 (700-1)	1600-1 3/4 663 (700-1 3/4)	1720-2 1/2 783 (800-2 1/2)

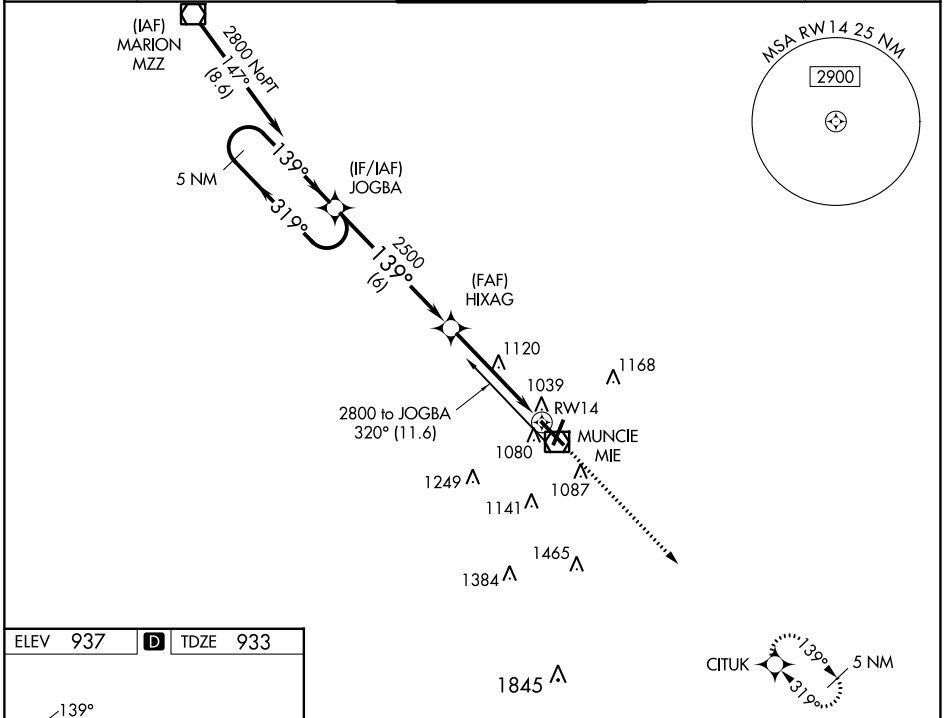
WAAS CH 56401 W14A	APP CRS 139°	Rwy Idg TDZE Apt Elev	6500 933 937
--	------------------------	-----------------------------	---

RNAV (GPS) RWY 14

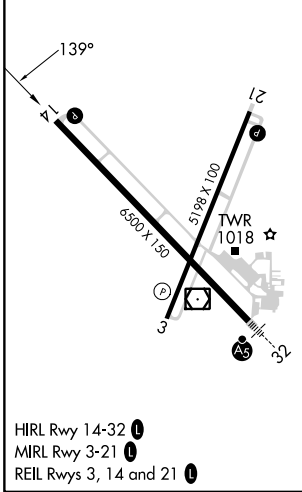
DELAWARE COUNTY RGNL (MIE)

RNP APCH.		MISSED APPROACH: Climb to 2900 direct CITUK and hold.	
For uncompensated Baro-VNAV systems, LNAV/VNAV NA below -1.6°C (4°F) or above 47°C (116°F). Baro-VNAV and VDP NA when using Fort Wayne Intl altimeter setting. When local altimeter setting not received, use Fort Wayne Intl altimeter setting and increase LPV DA all Cats to 1375 and visibility 3/8 SM, LNAV/VNAV DA all Cats to 1410 and visibility 1/8 SM; increase all MDA 140 feet and LNAV Cat C 1/2 SM and Cat D 1/4 SM, Circling visibility Cat C/D 1/2 SM.			

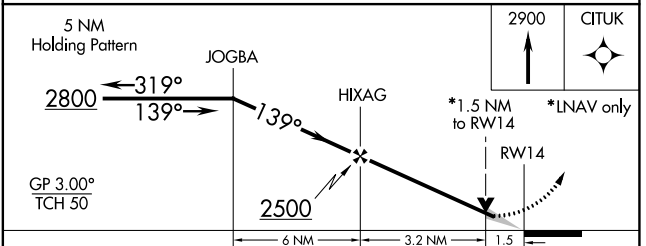
ATIS 133.25	INDIANAPOLIS APP CON 120.65 317.8	MUNCIE TOWER ★ 120.1 (CTAF) 0	GND CON 121.9	UNICOM 122.95
-----------------------	---	--	-------------------------	-------------------------



ELEV 937	D	TDZE 933
----------	----------	----------



HIRL Rwy 14-32 **1**
 MIRL Rwy 3-21 **1**
 REIL Rwy 3, 14 and 21 **1**



CATEGORY	A	B	C	D
LPV DA	1254-1 321 (400-1)			
LNAV/VNAV DA	1289-1¼ 356 (400-1¼)			
LNAV MDA	1420-1	487 (500-1)	1420-1¼ 487 (500-1¼)	1420-1½ 487 (500-1½)
C CIRCLING	1460-1¼	523 (600-1¼)	1480-1½ 543 (600-1½)	1560-2 623 (700-2)

EC-2, 22 FEB 2024 to 21 MAR 2024

EC-2, 22 FEB 2024 to 21 MAR 2024

WAAS CH 53537 W21A	APP CRS 205°	Rwy Idg TDZE Apt Elev	5197 935 937
--	------------------------	-----------------------------	---

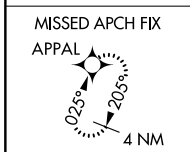
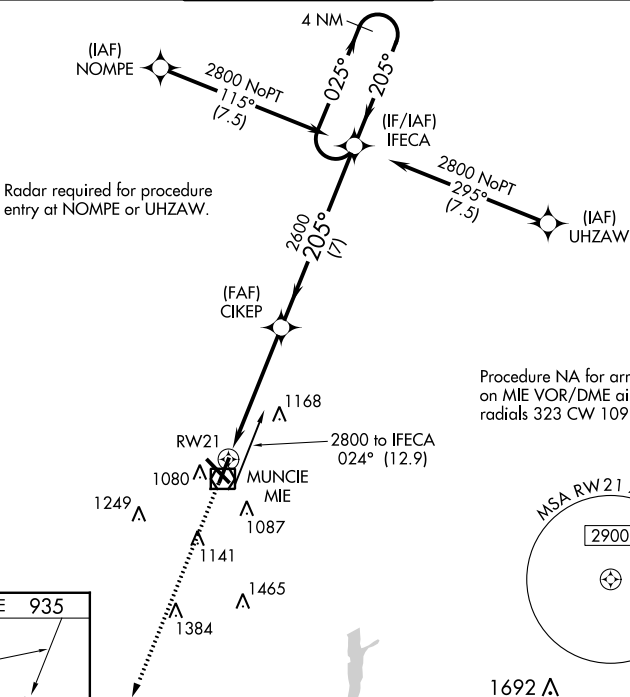
RNAV (GPS) RWY 21

DELAWARE COUNTY RGNL (MIE)

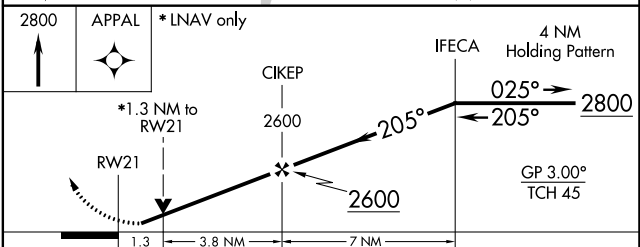
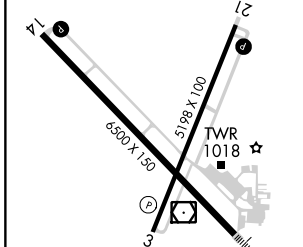
For uncompensated Baro-VNAV systems, LNAV/VNAV NA below -20°C (-4°F) or above 54°C (130°F). DME/DME RNP-0.3 NA. When local altimeter setting not received, use Fort Wayne Intl altimeter setting and increase all DA 121 feet and all MDA 140 feet; increase LPV all Cats and LNAV Cats C/D visibility 3/8 mile and LNAV/VNAV all Cats and Circling Cats C/D visibility 1/2 mile. Baro-VNAV and VDP NA when using Fort Wayne Intl altimeter setting. Helicopter visibility reduction below 3/4 SM NA.

MISSED APPROACH:
Climb to 2800 direct APPAL and hold.

ATIS 133.25	INDIANAPOLIS APP CON 120.65 317.8	MUNCIE TOWER ★ 120.1 (CTAF)	GND CON 121.9	UNICOM 122.95
-----------------------	---	---------------------------------------	-------------------------	-------------------------



ELEV	937	TDZE	935
------	-----	------	-----



CATEGORY	A	B	C	D
LPV DA		1195-7/8	260 (300-7/8)	
LNAV/VNAV DA		1351-13/8	416 (500-13/8)	
LNAV MDA	1400-1	465 (500-1)	1400-13/8	465 (500-13/8)
C CIRCLING	1460-1	523 (600-1)	1500-1 1/2	1600-2
			563 (600-1 1/2)	663 (700-2)

HIRL Rwy 14-32 **L**
MIRL Rwy 3-21 **L**
REIL Rwy 3, 14 and 21 **L**

EC-2, 22 FEB 2024 to 21 MAR 2024

EC-2, 22 FEB 2024 to 21 MAR 2024

WAAS CH 78237 W03A	APP CRS 025°	Rwy Idg 5197 TDZE 937 Apt Elev 937
---------------------------------	------------------------	---

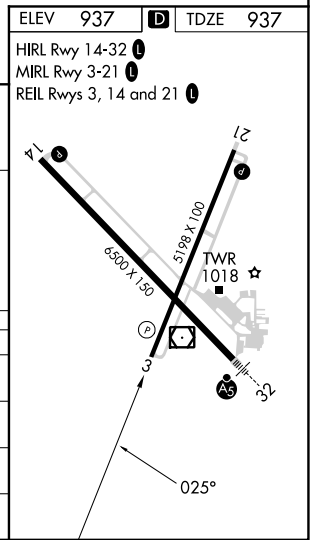
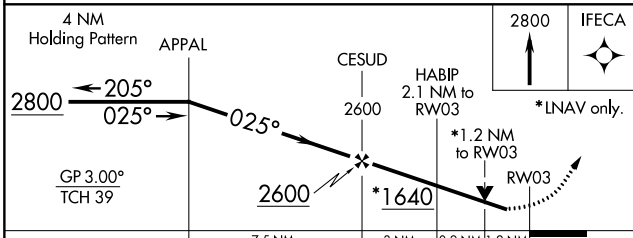
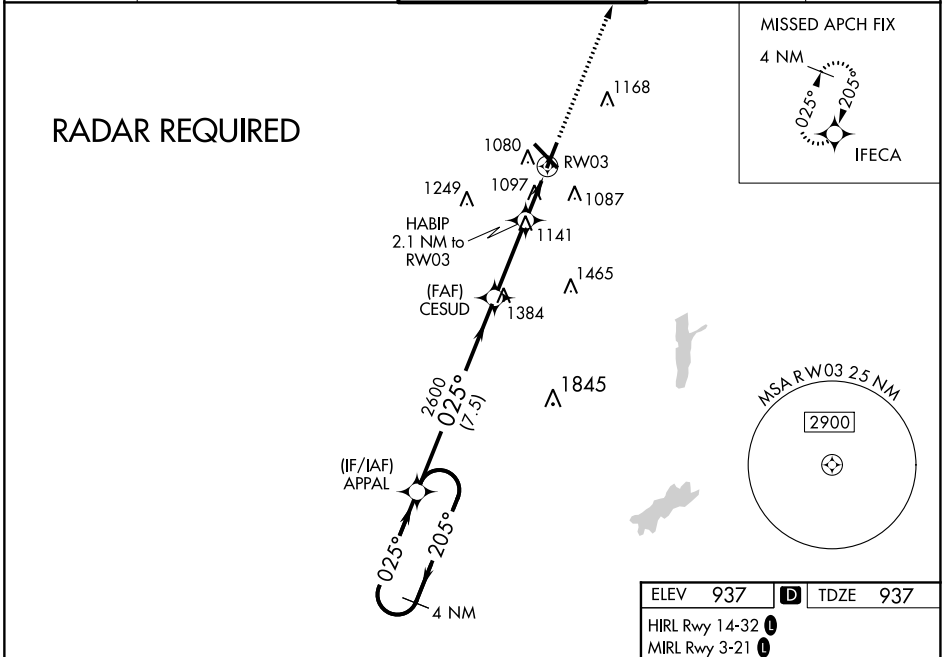
RNAV (GPS) RWY 3

DELAWARE COUNTY RGNL (MIE)

⚠ For uncompensated Baro-VNAV systems, LNAV/VNAV NA below -20°C (-4°F) or above 54°C (130°F). DME/DME RNP-0.3 NA. When local altimeter setting not received, use Fort Wayne Intl altimeter setting and increase all DA 121 feet and all MDA 140 feet; increase LPV all Cats and LNAV Cats C/D visibility 3/8 mile, LNAV/VNAV all Cats visibility 7/8 mile and Circling Cats C/D visibility 1/2 mile. Baro-VNAV NA when using Fort Wayne Intl altimeter setting. Helicopter visibility reduction below 3/4 SM NA.

MISSED APPROACH:
Climb to 2800 direct IFECA and hold.

ATIS 133.25	INDIANAPOLIS APP CON 120.65 317.8	MUNCIE TOWER ★ 120.1 (CTAF) 0	GND CON 121.9	UNICOM 122.95
-----------------------	---	---	-------------------------	-------------------------



CATEGORY	A	B	C	D
LPV DA		1190-7/8	253 (300-7/8)	
LNAV/VNAV DA		1412-1 5/8	475 (500-1 5/8)	
LNAV MDA	1360-1	423 (500-1)	1360-1 1/4	423 (500-1 1/4)
C CIRCLING	1460-1	523 (600-1)	1500-1 1/2 563 (600-1 1/2)	1600-2 663 (700-2)

EC-2, 22 FEB 2024 to 21 MAR 2024

EC-2, 22 FEB 2024 to 21 MAR 2024

WAAS CH 72601 W32A	APP CRS 319°	Rwy Idg TDZE Apt Elev	6500 937 937
--	------------------------	-----------------------------	---

RNAV (GPS) RWY 32

DELAWARE COUNTY RGNL (MIE)

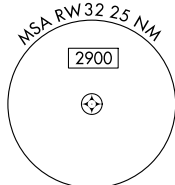
⚠ For uncompensated Baro-VNAV systems, LNAV/VNAV NA below -16°C (4°F) or above 47°C (116°F). DME/DME RNP-0.3 NA. Baro-VNAV and VDP NA when using Fort Wayne Intl altimeter setting. For inop MALSRS when using Fort Wayne Intl altimeter setting, increase LPV all Cats visibility to 1½ mile. When local altimeter setting not received, use Fort Wayne Intl altimeter setting and increase DA 121 feet; increase LPV and LNAV/VNAV all Cats visibility by ½ mile; increase all MDA 140 feet and LNAV visibility Cats C and D to 1¼; increase Circling visibility Cats C and D by ¼ mile. For inop MALSRS, increase all LPV Cats visibility to 1 SM.

MALSRS

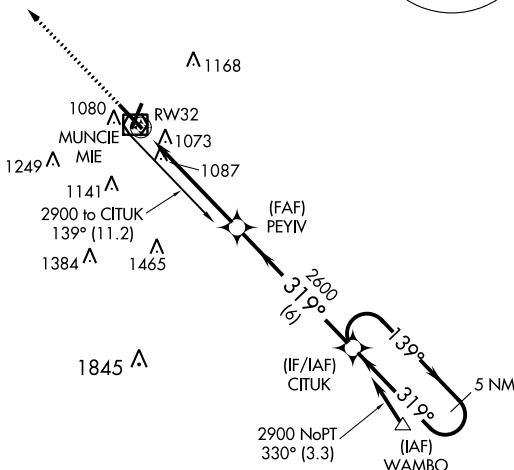


MISSED APPROACH:
Climb to 2800 direct JOGBA and hold.

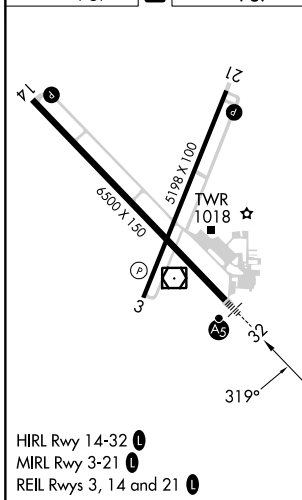
ATIS 133.25	INDIANAPOLIS APP CON 120.65 317.8	MUNCIE TOWER ★ 120.1 (CTAF) 0	GND CON 121.9	UNICOM 122.95
-----------------------	---	---	-------------------------	-------------------------



Procedure NA for arrivals on MIE VOR/DME airway radials 090 CW 109.



ELEV 937	D TDZE 937
----------	-------------------



HIRL Rwy 14-32 **Ⓛ**
MIRL Rwy 3-21 **Ⓛ**
REIL Rwy 3, 14 and 21 **Ⓛ**

2800	JOGBA	5 NM Holding Pattern		
*LNAV only.	*1.2 NM to RW32	PEYIV 2600	CITUK 2900	
RW32		2600	GP 3.04° TCH 52	
1.2		3.8 NM	6 NM	
CATEGORY	A	B	C	D
LPV DA	1241-½ 304 (400-½)			
LNAV/VNAV DA	1396-1⅛ 459 (500-1⅛)			
LNAV MDA	1460-½ 523 (600-½)		1460-1 523 (600-1)	
C CIRCLING	1460-1 523 (600-1)		1480-1½ 543 (600-1½) 1560-2 623 (700-2)	

VOR/DME MIE 114.4 Chan 91	APP CRS 143°	Rwy Idg 6500 TDZE 933 Apt Elev 937
---	------------------------	---

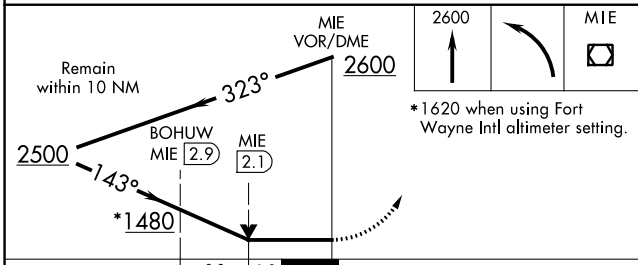
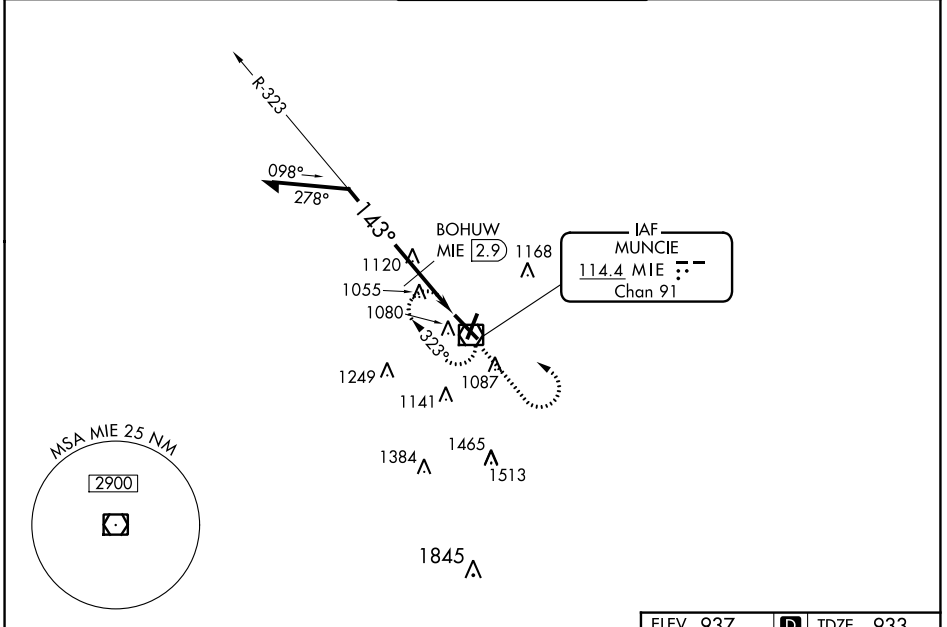
VOR RWY 14

DELAWARE COUNTY RGNL (MIE)

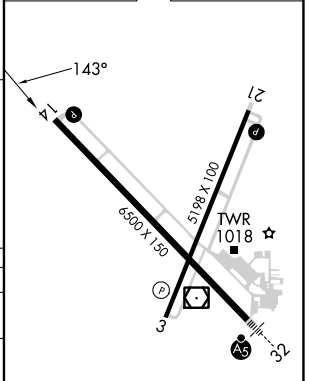
⚠ When local altimeter setting not received, use Fort Wayne Intl altimeter setting and increase all MDAs 140 feet; increase S-14 Cat C visibility ½ SM, Cat D ¼ SM; increase Circling Cat C/D visibility ½ SM. BOHUW fix minimums: increase S-14 Cat C visibility ½ SM, Cat D ¼ SM and Circling Cat C/D visibility ½ SM. VDP NA with Fort Wayne altimeter setting.

⚠ MISSED APPROACH: Climb to 2600 then left turn direct MIE VOR/DME and hold.

ATIS 133.25	INDIANAPOLIS APP CON 120.65 317.8	MUNCIE TOWER ★ 120.1 (CTAF) 0	GND CON 121.9	UNICOM 122.95
-----------------------	---	---	-------------------------	-------------------------



ELEV 937	D TDZE 933
----------	-------------------



CATEGORY	A	B	C	D
S-14	1480-1 547 (600-1)		1480-1½ 547 (600-1½)	1480-1¾ 547 (600-1¾)
C CIRCLING	1480-1 543 (600-1)		1480-1½ 543 (600-1½)	1560-2 623 (700-2)
BOHUW FIX MINIMUMS				
S-14	1380-1 447 (500-1)		1380-1¼ 447 (500-1¼)	1380-1½ 447 (500-1½)
C CIRCLING	1460-1 523 (600-1)		1480-1½ 543 (600-1½)	1560-2 623 (700-2)

HIRL Rwy 14-32 **0**
MIRL Rwy 3-21 **0**
REIL Rwys 3, 14 and 21 **0**

EC-2, 22 FEB 2024 to 21 MAR 2024

EC-2, 22 FEB 2024 to 21 MAR 2024

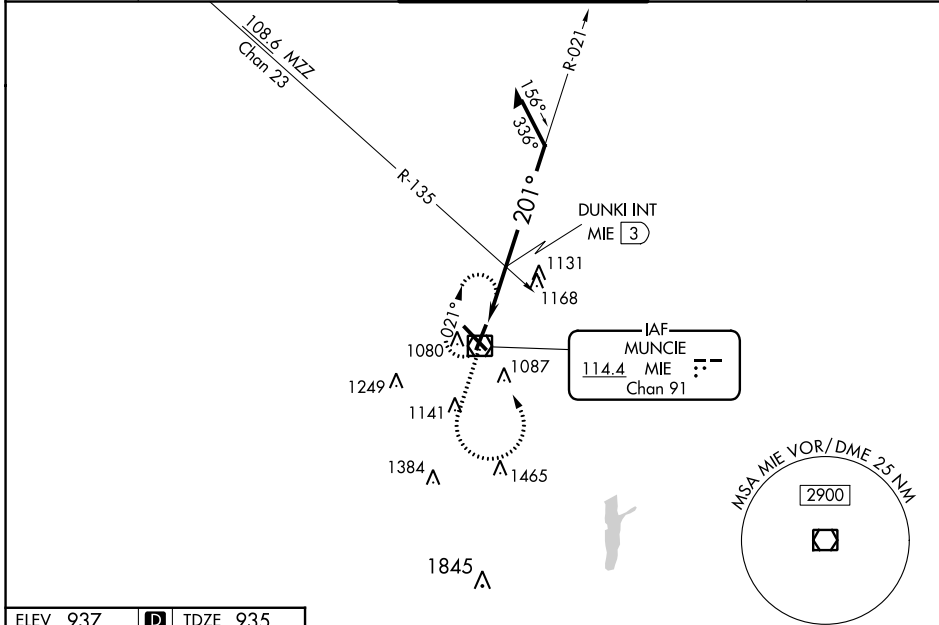
VOR/DME MIE 114.4 Chan 91	APP CRS 201°	Rwy Idg 5197 TDZE 935 Apt Elev 937
---	------------------------	---

VOR RWY 21
DELAWARE COUNTY RGNL (MIE)

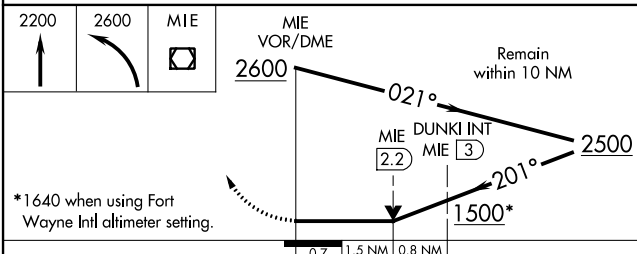
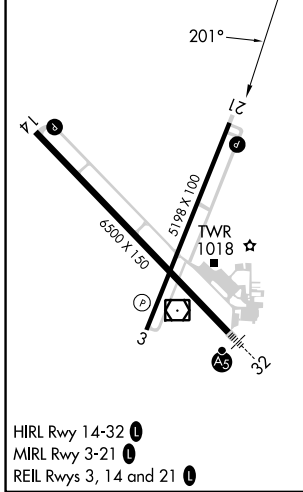
⚠ Visibility reduction by helicopters NA. When local altimeter setting not received, use Fort Wayne Intl altimeter setting and increase all MDAs 140 feet; increase S-21 Cat C visibility ½ SM and Cat D visibility ¼ SM; increase Circling Cat C visibility ½ SM and Cat D ¼ SM; DUNKI fix minimums: increase S-21 Cat C/D ¾ SM and Circling visibility Cat C/D ½ SM. VDP NA when using Fort Wayne Intl altimeter setting.

MISSED APPROACH: Climb to 2200 then climbing left turn to 2600 direct MIE VOR/DME and hold.

ATIS 133.25	INDIANAPOLIS APP CON 120.65 317.8	MUNCIE TOWER ★ 120.1 (CTAF) 0	GND CON 121.9	UNICOM 122.95
-----------------------	---	---	-------------------------	-------------------------



ELEV 937	D	TDZE 935
----------	----------	----------



CATEGORY	A	B	C	D
S-21	1500-1 565 (600-1)		1500-1½ 565 (600-1½)	1500-1¾ 565 (600-1¾)
C CIRCLING	1500-1 563 (600-1)		1500-1½ 563 (600-1½)	1560-2 623 (700-2)
DUNKI FIX MINIMUMS (DUAL VOR RECEIVERS OR DME REQUIRED)				
S-21	1440-1 505 (600-1)		1440-1½ 505 (600-1½)	
C CIRCLING	1460-1 523 (600-1)		1480-1½ 543 (600-1½)	1560-2 623 (700-2)

EC-2, 22 FEB 2024 to 21 MAR 2024

EC-2, 22 FEB 2024 to 21 MAR 2024