

CITRUS ONE DEPARTURE

**TOP ALTITUDE:
2000**

D-ATIS DEP
120.525
CLNC DEL
134.7 341.7
CPDL
GND CON
126.4 275.8 (EAST)
121.8 275.8 (WEST)
ORLANDO INTL TOWER
(Rwys 17L-35R, 17R-35L)
118.45 253.5
(Rwys 18L-36R, 18R-36L)
124.3 253.5

CRAIG
114.5 CRG
Chan 92
N30°20.33' - W81°30.60'
L-21-23-24, H-8-12

SEMINOLE
117.5 SZW
Chan 122
N30°33.37'
W84°22.44'
L-21-22, H-8

OCALA
113.7 OCF
Chan 84
N29°10.65'
W82°13.58'
L-21-24

ORMOND BEACH
112.6 OMN
Chan 73
N29°18.20'
W81°06.76'
L-21-23-24, H-8

ORLANDO
112.2 ORL
Chan 59
N28°32.56'
W81°20.10'
L-21-23-24, H-8

MELBOURNE
110.0 MLB
Chan 37
N28°06.32'
W80°38.12'
L-23-24

ST PETERSBURG
116.4 PIE
Chan 111
N27°54.47'
W82°41.06'
L-21-24, H-8

LAKELAND
116.0 LAL
Chan 107
N27°59.17'
W82°00.83'
L-21-24, H-8

PALM BEACH
115.7 PBI
Chan 104
N26°40.80'
W80°05.19'
L-23, H-8

SARASOTA
117.0 SRQ
Chan 117
N27°24.42'
W82°33.82'
L-21-23, H-8

LEE COUNTY
111.8 RSW
Chan 55
N26°31.79' - W81°46.55'
L-21-23, H-8

NOTE: RADAR required.

TAKEOFF MINIMUMS:
Rwys 17L/R, 18L/R, 35L/R, 36L/R: Standard.

NOTE: Chart not to scale.

DEPARTURE ROUTE DESCRIPTION

TAKEOFF ALL RWYS: Climb on heading as assigned for vectors to appropriate fix. Maintain 2000. Expect further clearance to filed altitude/flight level 10 minutes after departure.

JAGUAR SIX DEPARTURE

ORLANDO, FLORIDA

**TOP ALTITUDE:
5000**

D-ATIS DEP

120.525

CLNC DEL

134.7 341.7

CPDLC

GND CON

126.4 275.8 (East)

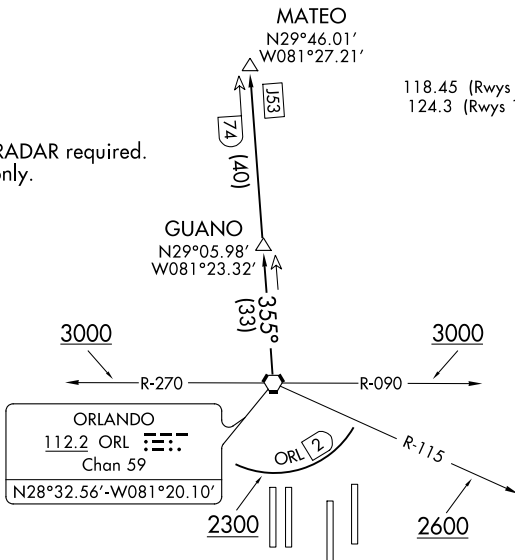
121.8 275.8 (West)

ORLANDO INTL TOWER

118.45 (Rwys 17L-35R, 17R-35L) 253.5

124.3 (Rwys 18L-36R, 18R-36L) 253.5

NOTE: DME and RADAR required.
NOTE: Turbojets only.



TAKEOFF MINIMUMS

Rwys 17L/R, 18L/R, 35L/R, 36L/R: Standard.

NOTE: Chart not to scale.

DEPARTURE ROUTE DESCRIPTION

TAKEOFF RWYS 17L/R, 18L/R: Climb on heading as assigned, thence . . .

TAKEOFF RWYS 35L/R: Climb on heading as assigned. Cross ORL VORTAC R-115 at or above 2600, cross ORL VORTAC R-090 or R-270 at or above 3000, thence . . .

TAKEOFF RWYS 36L/36R: Climb on heading as assigned. Cross 2 DME south of ORL VORTAC at or above 2300, cross ORL VORTAC R-090 or R-270 at or above 3000, thence . . .

. . . for vectors to ORL VORTAC R-355 to GUANO, then on ORL VORTAC R-355 to MATEO. Maintain 5000. Expect further clearance to filed altitude/flight level 10 minutes after departure.

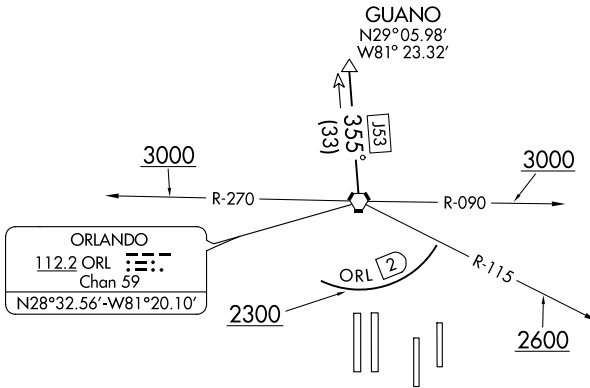
MCCOY TWO DEPARTURE

D-ATIS DEP
120.525
CLNC DEL
134.7 341.7
CPDCL
GND CON
126.4 275.8 (East)
121.8 275.8 (West)
ORLANDO INTL TOWER
118.45 (Rwys 17L-35R, 17R-35L) 253.5
124.3 (Rwys 18L-36R, 18R-36L) 253.5

**TOP ALTITUDE:
5000**

TAKEOFF MINIMUMS

Rwys 17L/R, 18L/R, 35L/R, 36L/R: Standard.



NOTE: DME and RADAR required.
NOTE: Turbojets only.

NOTE: Chart not to scale.



DEPARTURE ROUTE DESCRIPTION

TAKEOFF RWYS 17L/R, 18L/R: Climb on heading as assigned. Thence. . . .

TAKEOFF RWYS 35L/R, 36L/R: Climb on heading as assigned. Cross 2 DME south of ORL VORTAC at or above 2300, cross ORL VORTAC R-115 at or above 2600, cross ORL VORTAC R-090 or R-270 at or above 3000. Thence. . . .

. . . .for vectors to ORL VORTAC R-355 to GUANO. Maintain 5000. Expect further clearance to filed altitude/flight level 10 minutes after departure.

SE-3, 10 OCT 2019 to 07 NOV 2019

SE-3, 10 OCT 2019 to 07 NOV 2019

ORLANDO FOUR DEPARTURE

**TOP ALTITUDE:
5000**

TAKEOFF MINIMUMS

Rwys 17L/R, 18L/R, 35L/R, 36L/R: Standard.

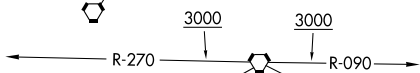
D-ATIS DEP 120.525
 CLNC DEL 134.7 341.7
 CPDLC
 GND CON 126.4 275.8 (East)
 121.8 275.8 (West)
 ORLANDO INTL TOWER
 (Rwys 17L-35R, 17R-35L) 118.45 253.5
 (Rwys 18L-36R, 18R-36L) 124.3 253.5

SEMINOLE
 117.5 SZW
 Chan 122
 N30°33.37'
 W84°22.44'
 L-21-22, H-8

OCALA
 113.7 OCF
 Chan 84
 N29°10.65'
 W82°13.58'
 L-21-24

CRAIG
 114.5 CRG
 Chan 92
 N30°20.33'
 W81°30.60'
 L-21-23-24, H-8-12

ORMOND BEACH
 112.6 OMN
 Chan 73
 N29°18.20'
 W81°06.76'
 L-21-23-24, H-8



ORLANDO
 112.2 ORL
 Chan 59
 N28°32.56'-W81°20.10'

ST PETERSBURG
 116.4 PIE
 Chan 111
 N27°54.47'
 W82°41.06'
 L-21-24, H-8

MELBOURNE
 110.0 MLB
 Chan 37
 N28°06.32'
 W80°38.12'
 L-23-24

LAKELAND
 116.0 LAL
 Chan 107
 N27°59.17'
 W82°00.83'
 L-21-24, H-8

SARASOTA
 117.0 SRQ
 Chan 117
 N27°24.42'
 W82°33.82'
 L-21-23, H-8

LEE COUNTY
 111.8 RSW
 Chan 55
 N26°31.79'-W81°46.55'
 L-21-23, H-8

PALM BEACH
 115.7 PBI
 Chan 104
 N26°40.80'
 W80°05.19'
 L-23, H-8

NOTE: RADAR required.
 NOTE: Takeoff Rwy 35L/R, 36L/R: DME required.

NOTE: Chart not to scale.

SE-3, 10 OCT 2019 to 07 NOV 2019

SE-3, 10 OCT 2019 to 07 NOV 2019

DEPARTURE ROUTE DESCRIPTION

TAKEOFF RWYS 17L/R, 18L/R: Climb on heading as assigned for vectors to filed/assigned route. Thence. . . .

TAKEOFF RWYS 35L/R, 36L/R: Climb on heading as assigned for vectors to filed/assigned route. Cross 2 DME south of ORL VORTAC at or above 2300, cross ORL VORTAC R-115 at or above 2600, cross ORL VORTAC R-090 or R-270 at or above 3000. Thence. . . .

. . . .maintain 5000, expect further clearance to filed altitude/flight level 10 minutes after departure.