

LOC/DME I-MCK 110.95 Chan 46 (Y)	APP CRS 123°	Rwy Idg 5698 TDZE 2583 Apt Elev 2583
---	------------------------	---

ILS or LOC/DME RWY 12

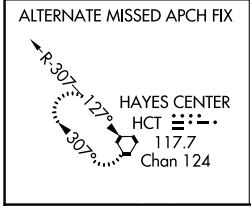
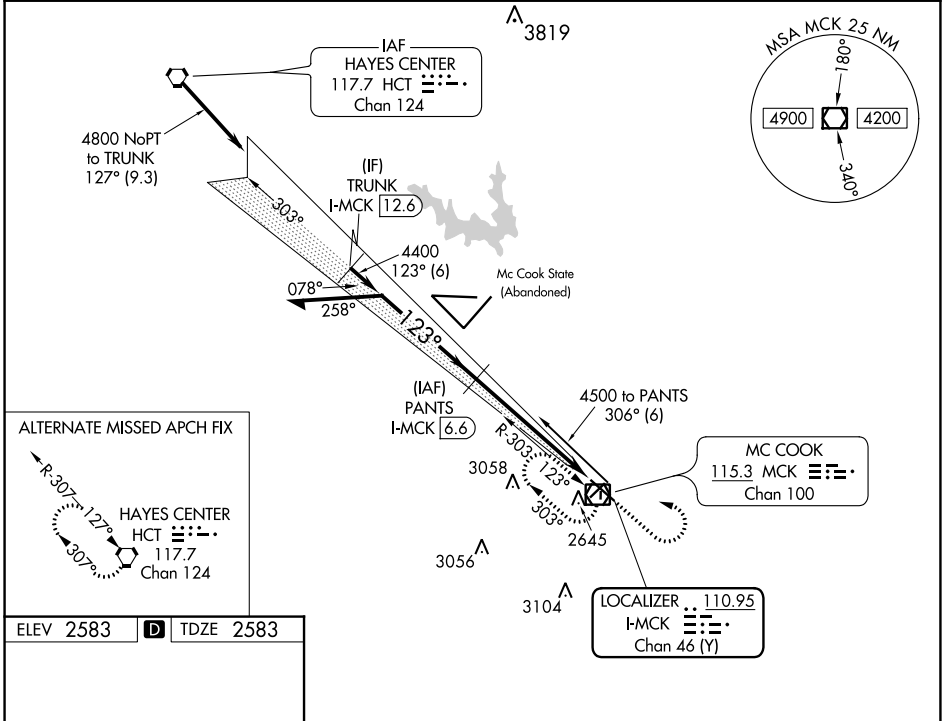
MC COOK BEN NELSON RGNL (MCK)

⚠ Circling NA to Rwys 17 and 35. When local altimeter setting not received, use Imperial Muni altimeter setting and increase DA 213 feet and S-ILS 12 all visibilities ½ mile; increase all MDAs 220 feet and S-LOC 12 and Circling visibilities Cats A and B ¼ mile, Cat C 1 mile. VDP NA when using Imperial Muni altimeter setting. For inoperative MALSR, when using Imperial Muni altimeter setting increase S-ILS 12 all visibilities to 1½, and S-LOC 12 Cat A visibility to 1.

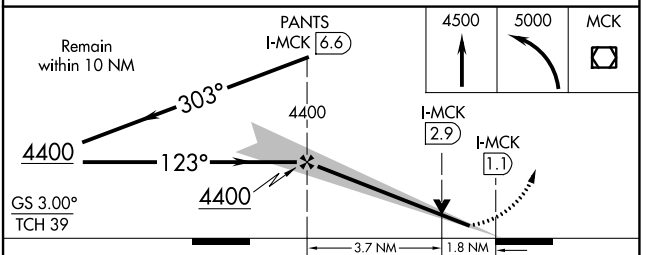
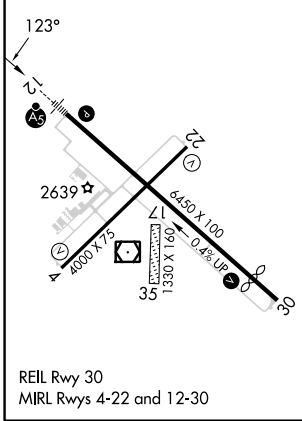
MALSR

MISSED APPROACH:
Climb to 4500 then climbing left turn to 5000 direct MCK VOR/DME and hold.

ASOS 119.025	DENVER CENTER 132.7 226.675	UNICOM 122.8 (CTAF)
------------------------	---------------------------------------	-------------------------------



ELEV 2583	D	TDZE 2583
-----------	----------	-----------



CATEGORY	A	B	C	D
S-ILS 12	2783-½ 200 (200-½)			NA
S-LOC 12	3180-½	597 (600-½)	3180-1 597 (600-1)	NA
CIRCLING	3180-1	597 (600-1)	3360-2¼ 777 (800-2¼)	NA

NC-2, 22 FEB 2024 to 21 MAR 2024

NC-2, 22 FEB 2024 to 21 MAR 2024


WAAS CH 50118 W12A	APP CRS 123°	Rwy Idg TDZE Apt Elev	5698 2583 2583
--	------------------------	-----------------------------	---

RNAV (GPS) RWY 12


MC COOK BEN NELSON RGNL (MCK)

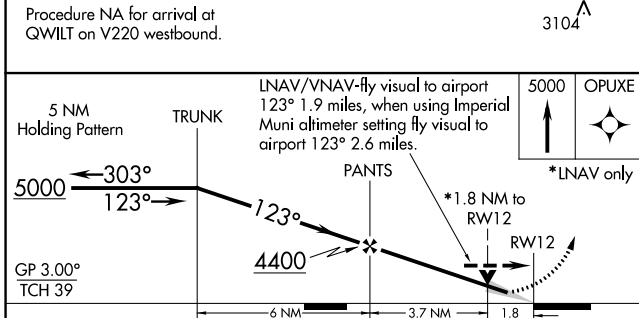
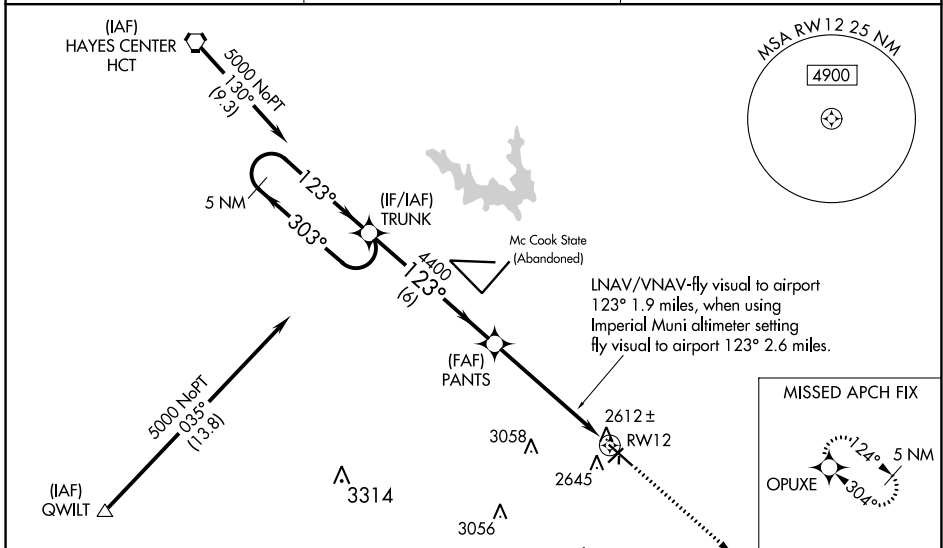
RNP APCH-GPS.

⚠ Circling NA to Rwy 17 and 35. For uncompensated Baro-VNAV systems, LNAV/VNAV NA below -20°C or above 54°C. Baro-VNAV and VDP NA when using Imperial Muni altimeter setting. For inoperative MALSR, increase LPV all Cats visibility to 1, when using Imperial Muni altimeter setting increase LPV all Cats visibility to 1 3/4 and LNAV visibility Cat A to 1. Inoperative table does not apply to LNAV/VNAV. When local altimeter setting not received, use Imperial Muni altimeter setting and increase all DAs 213 feet, and LPV all Cats visibility 3/4 mile, LNAV/VNAV Cat C visibility 1/2 mile; increase all MDAs 220 feet, and LNAV and Circling visibility Cats A and B 1/4 mile, Cat C 1 mile.

MALSR 

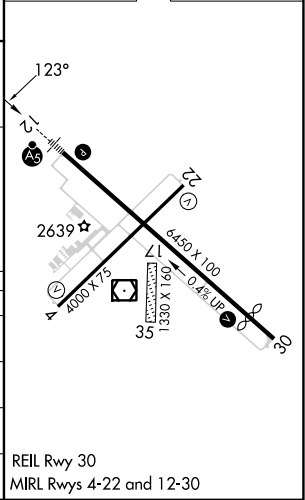
MISSED APPROACH: Climb to 5000 direct OPUXE and hold.

ASOS 119.025	DENVER CENTER 132.7 226.675	UNICOM 122.8 (CTAF) 
------------------------	---------------------------------------	---



ELEV 2583	D TDZE 2583
-----------	--------------------

CATEGORY	A	B	C	D
LPV DA	2840-1/2	257 (300-1/2)		NA
LNAV/VNAV DA	3240-2	657 (700-2)		NA
LNAV MDA	3180-1/2	597 (600-1/2)	3180-1 597 (600-1)	NA
CIRCLING	3180-1	597 (600-1)	3360-2 1/4 777 (800-2 1/4)	NA



NC-2, 22 FEB 2024 to 21 MAR 2024

NC-2, 22 FEB 2024 to 21 MAR 2024

APP CRS	Rwy Idg	4000
218°	TDZE	2565
	Apt Elev	2583

RNAV (GPS) RWY 22

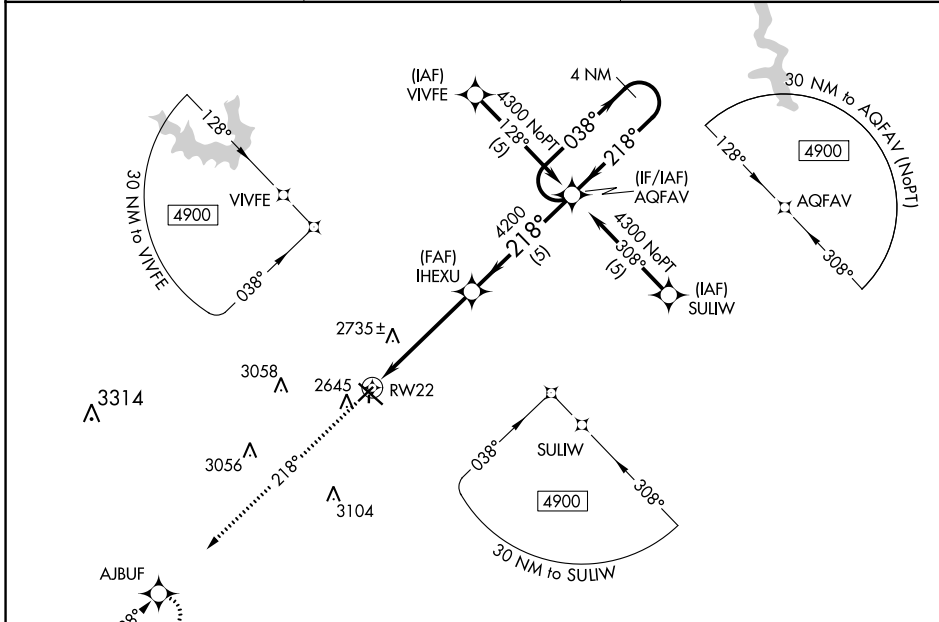
MC COOK BEN NELSON RGNL (MCK)

RNP APCH-GPS.

▼ When local altimeter setting not received, use Imperial Muni altimeter setting and increase all MDA 220 feet, increase S-22 and Circling Cat C visibility ¾ mile. VDP NA when using Imperial Muni altimeter setting. Circling NA to Rws 17 and 35.

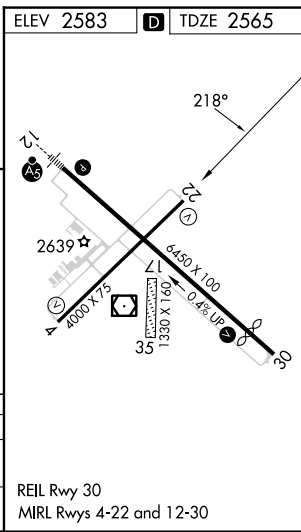
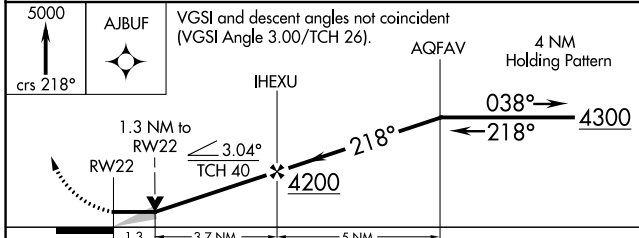
MISSED APPROACH: Climb to 5000 via 218° course to AJBUF and hold.

ASOS 119.025	DENVER CENTER 132.7 226.675	UNICOM 122.8 (CTAF)
------------------------	---------------------------------------	-------------------------------



NC-2, 22 FEB 2024 to 21 MAR 2024

NC-2, 22 FEB 2024 to 21 MAR 2024



CATEGORY	A	B	C	D
LNVA MDA	3000-1 435 (500-1)	3000-1 435 (500-1)	3000-1 ¼ 435 (500-1 ¼)	NA
CIRCLING	3040-1 457 (500-1)	3120-1 537 (600-1)	3360-2 ¼ 777 (800-2 ¼)	NA

WAAS CH 56218 W30A	APP CRS 304°	Rwy Idg TDZE Apt Elev	5698 2558 2583
--	------------------------	-----------------------------	---

RNAV (GPS) RWY 30

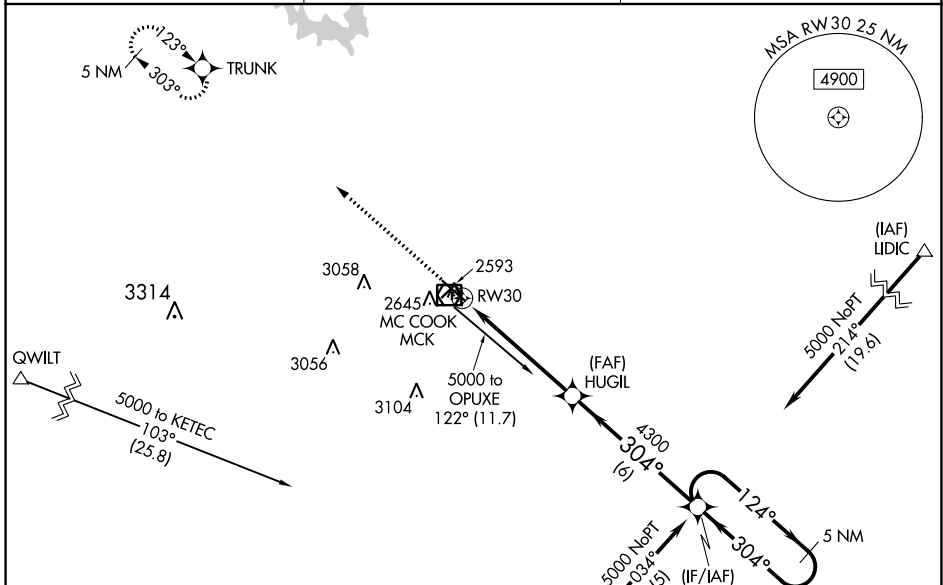
MC COOK BEN NELSON RGNL (MCK)

RNP APCH-GPS.

▼ When local altimeter setting not received, use Imperial Muni altimeter setting: increase LPV DA to 3023 feet, and all visibilities $\frac{1}{2}$ SM; increase LNAV/VNAV DA to 3079 feet and all visibilities $\frac{3}{8}$ SM; increase all MDA's 220 feet and visibility Cat C $\frac{3}{4}$ SM. Baro-VNAV and VDP NA when using Imperial Muni altimeter setting. Circling NA to Rwy 17 and 35. For uncompensated Baro-VNAV systems, LNAV/VNAV NA below -20°C or above 54°C.

MISSED APPROACH: Climb to 5000 direct TRUNK and hold.

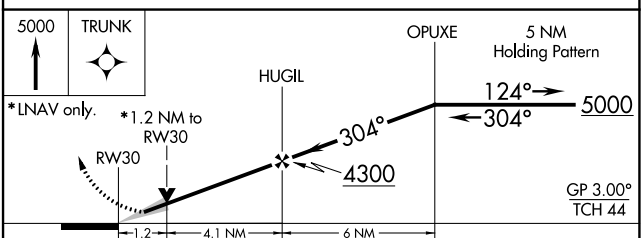
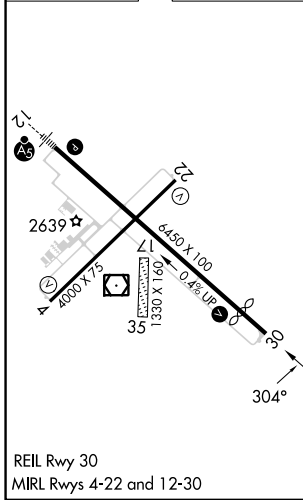
ASOS 119.025	DENVER CENTER 132.7 226.675	UNICOM 122.8 (CTAF) 0
------------------------	---------------------------------------	---------------------------------



NC-2, 22 FEB 2024 to 21 MAR 2024

NC-2, 22 FEB 2024 to 21 MAR 2024

ELEV 2583	D	TDZE 2558
-----------	----------	-----------



CATEGORY	A	B	C	D
LPV DA	2810- $\frac{7}{8}$	252 (300- $\frac{7}{8}$)		NA
LNAV/VNAV DA	2866-1	308 (300-1)		NA
LNAV MDA	2960-1	402 (400-1)	2960-1 $\frac{1}{8}$ 402 (400-1 $\frac{1}{8}$)	NA
CIRCLING	3040-1 457 (500-1)	3120-1 537 (600-1)	3360-2 $\frac{1}{4}$ 777 (800-2 $\frac{1}{4}$)	NA

