

AIRPORT DIAGRAM

MC CLELLAN AIRFIELD (MCC)
SACRAMENTO, CALIFORNIA

AL-357 (FAA)

AWOS-3
125.975
CTAF/UNICOM
122.975
CLNC DEL
119.825

1000
X 200

FIELD
ELEV
77

38°41'N

RWY 16-34
S-155, D-300, 2S-175,
2D-500, 2D/D1-620, C5-840



JANUARY 2020
ANNUAL RATE OF CHANGE
0.1° W

FIRE STATION

SW-2, 22 FEB 2024 to 21 MAR 2024

SW-2, 22 FEB 2024 to 21 MAR 2024

10599 X 150

38°40'N

FBO

ELEV
70

1000
X 200

38°39'N

121°25'W

121°24'W

AIRPORT DIAGRAM

SACRAMENTO, CALIFORNIA
MC CLELLAN AIRFIELD (MCC)

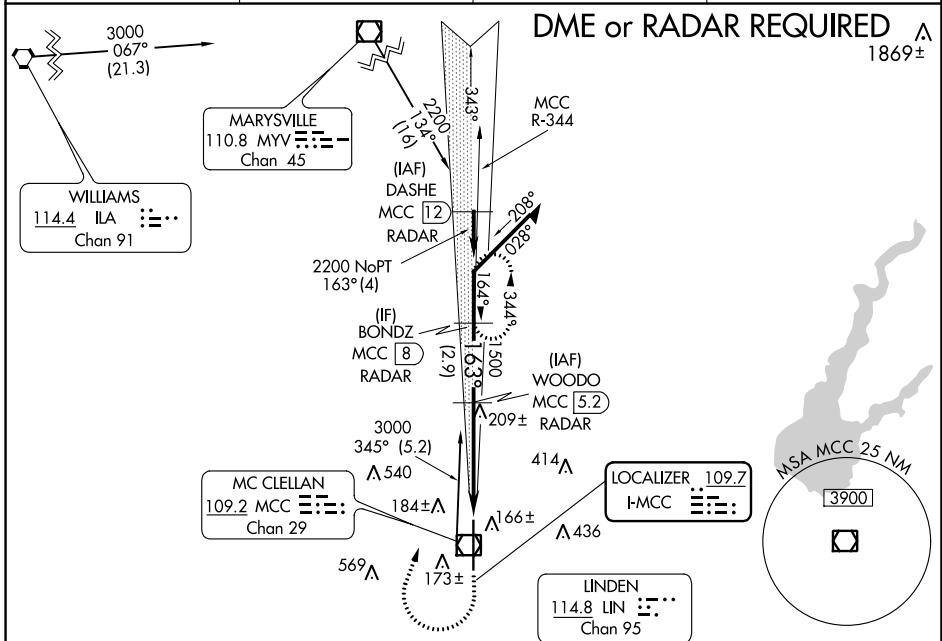
LOC I-MCC 109.7	APP CRS 163°	Rwy ldg 10599 TDZE 77 Apt Elev 77
---------------------------	------------------------	--

ILS or LOC RWY 16

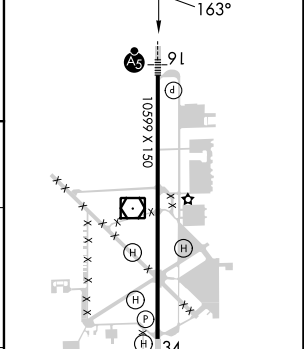
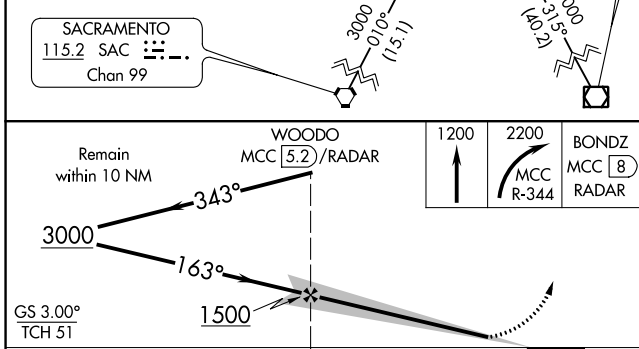
MC CLELLAN AIRFIELD (MCC)

NA DME from MCC VOR/DME. If local altimeter setting is not received, use Sacramento Intl altimeter setting and increase all DH/MDAs 40 feet.	MALSRR 	MISSED APPROACH: Climb to 1200 then climbing right turn to 2200 via MCC VOR/DME R-344 to BONDZ/MCC 8 DME/RADAR and hold.
---	------------	--

AWOS-3 125.975	NORCAL APP CON 127.4 317.5	CINC DEL 119.825	UNICOM 122.975 (CTAF)
--------------------------	--------------------------------------	----------------------------	---------------------------------



ELEV 77	TDZE 77
---------	---------



CATEGORY	A	B	C	D
S-ILS 16		277-1/2	200 (200-1/2)	
S-LOC 16		460-1/2	383 (400-1/2)	460-3/4 383 (400-3/4)
CIRCLING	NA			

FAF to MAP 4.3 NM					
Knots	60	90	120	150	180
Min:Sec	4:18	2:52	2:09	1:43	1:26

SW-2, 22 FEB 2024 to 21 MAR 2024

SW-2, 22 FEB 2024 to 21 MAR 2024

VOR/DME MCC 109.2 Chan 29	APP CRS 333°	Rwy Idg 10599 TDZE 72 Apt Elev 77
---	------------------------	--

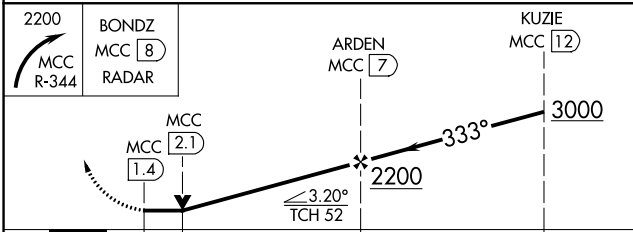
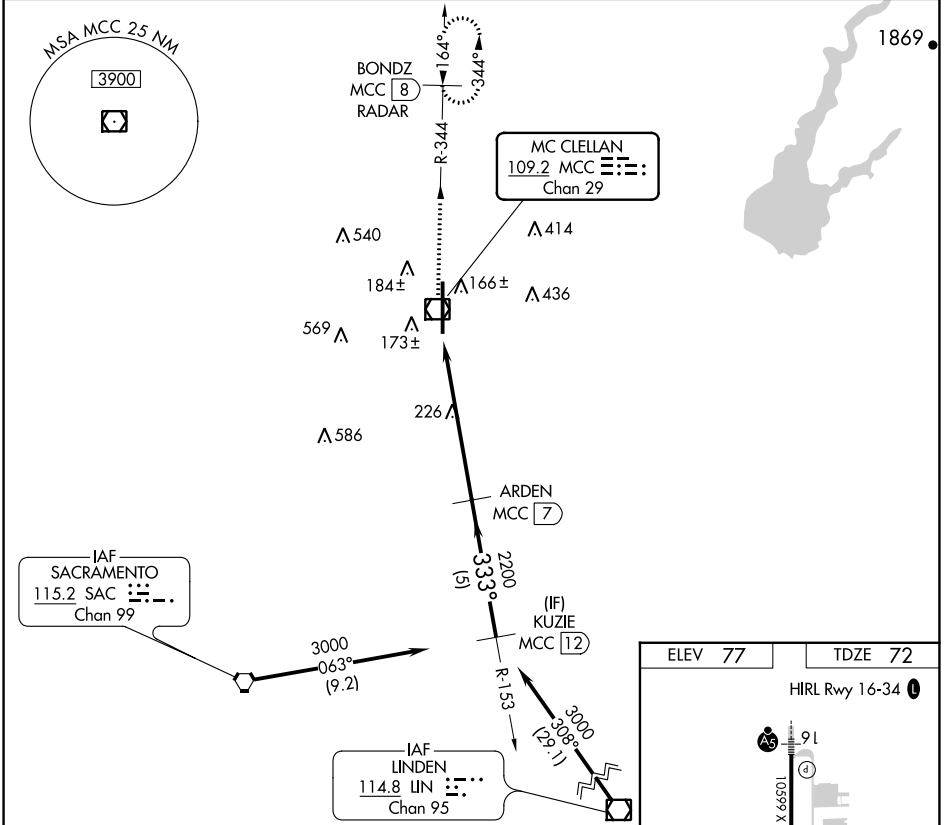
VOR/DME RWY 34

MC CLELLAN AIRFIELD (MCC)

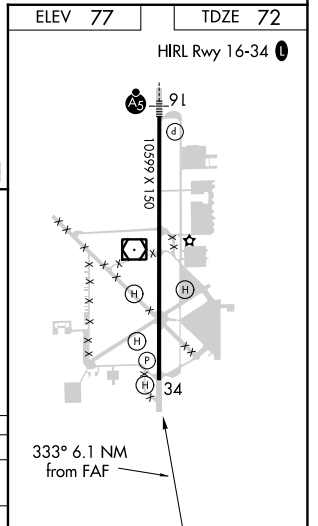
NA VDP NA when using Sacramento Intl altimeter setting. When local altimeter setting not received, use Sacramento Intl altimeter setting and increase all MDAs 40 feet.

MISSED APPROACH: Climbing right turn to 2200 via MCC R-344 to BONDZ/MCC 8 DME/RADAR and hold.

AWOS-3 125.975	NORCAL APP CON 127.4 317.5	CLNC DEL 119.825	UNICOM 122.975 (CTAF)
--------------------------	--------------------------------------	----------------------------	---------------------------------



CATEGORY	A	B	C	D
S-34	500-1	428 (500-1)	500-1½ 428 (500-1½)	500-1½ 428 (500-1½)
CIRCLING	NA			



SW-2, 22 FEB 2024 to 21 MAR 2024

SW-2, 22 FEB 2024 to 21 MAR 2024