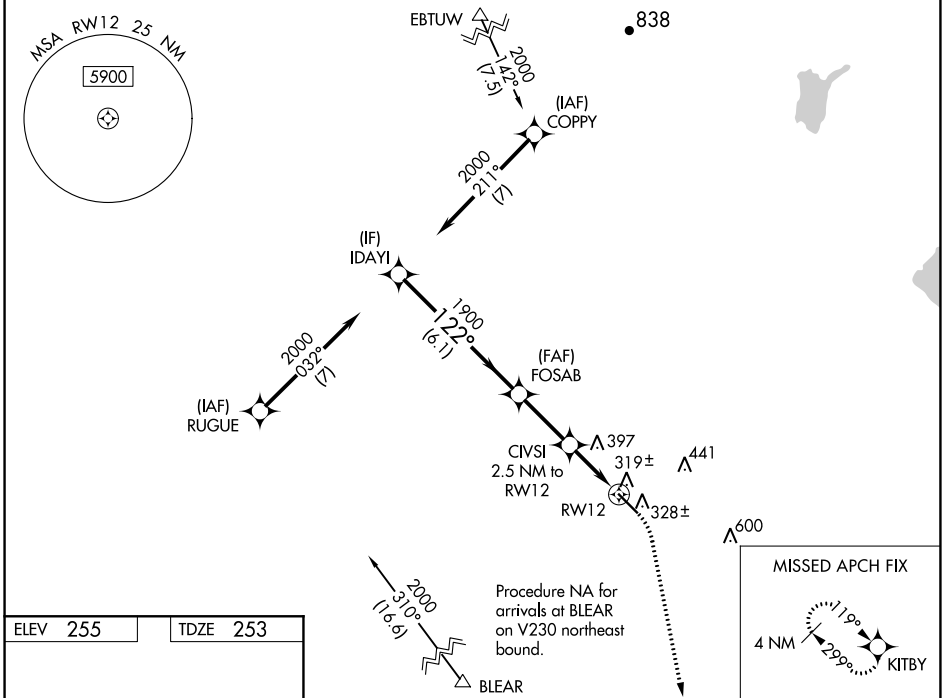


WAAS CH 62909 W12A	APP CRS 122°	Rwy Idg TDZE Apt Elev	5545 253 255
--	------------------------	-----------------------------	---

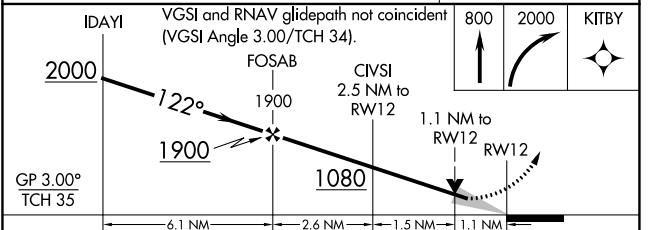
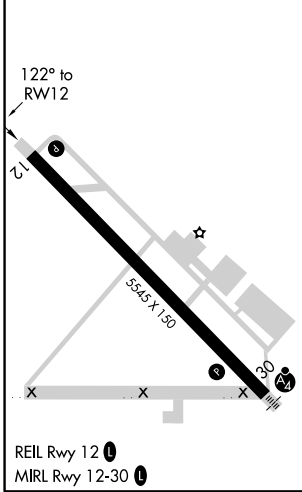
RNAV (GPS) RWY 12

MADERA MUNI (M.A.E)

RNP APCH - GPS.		MISSED APPROACH: Climb to 800 then climbing right turn to 2000 direct KITBY and hold.	
<p>⚠ For uncompensated Baro-VNAV systems, LNAV/VNAV NA below -2°C or above 54°C.</p>		ASOS 134.725	FRESNO APP CON 119.45
		CINC DEL 119.45	UNICOM 122.8 (CTAF) 📻



ELEV 255	TDZE 253
----------	----------



CATEGORY	A	B	C	D
LPV DA	503-3/4	250 (300-3/4)		NA
LNAV/VNAV DA	503-3/4	250 (300-3/4)		NA
LNAV MDA	620-1	367 (400-1)		NA
C CIRCLING	680-1 425 (500-1)	720-1 465 (500-1)	760-1 1/2 505 (600-1 1/2)	NA

SW-2, 08 SEP 2022 to 06 OCT 2022

SW-2, 08 SEP 2022 to 06 OCT 2022

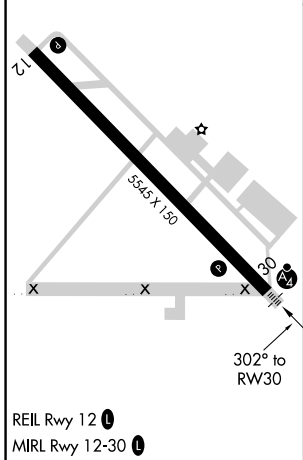
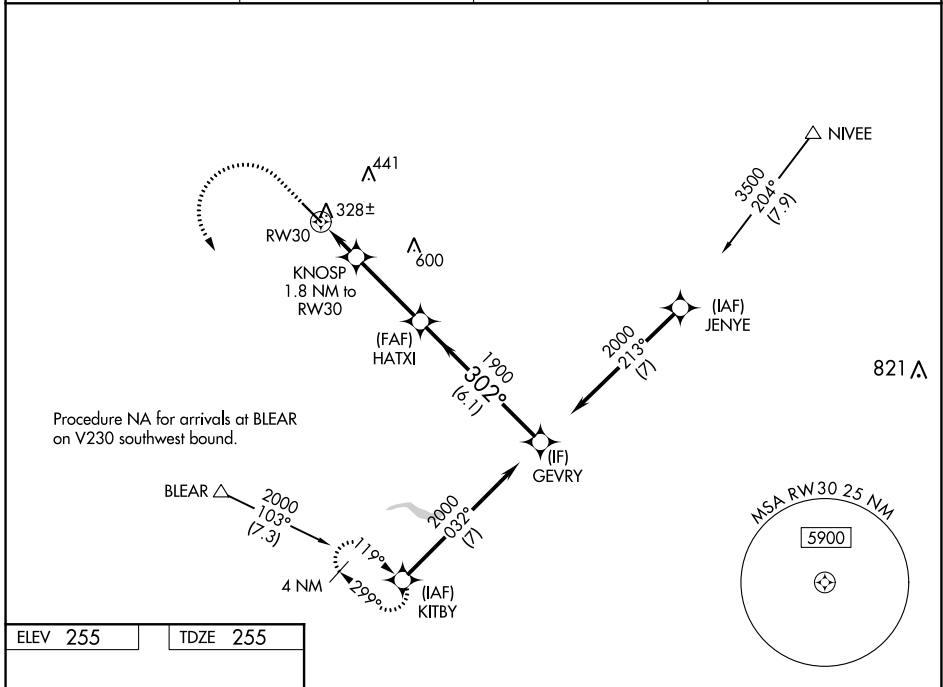
WAAS CH 90209 W30A	APP CRS 302°	Rwy Idg TDZE 255 Apt Elev 255	5545
--	------------------------	---	-------------

RNAV (GPS) RWY 30

MADERA MUNI (MAE)

RNP APCH - GPS.	MALSF	MISSED APPROACH: Climb to 800 then climbing left turn to 2000 to KITBY and hold.
<p>▼ For uncompensated Baro-VNAV systems, LNAV/VNAV NA below -2°C or above 54°C. Inop table does not apply to LPV and LNAV/VNAV Cat A/B/C.</p>		

ASOS 134.725	FRESNO APP CON 119.45	CLNC DEL 119.45	UNICOM 122.8 (CTAF) 0
------------------------	---------------------------------	---------------------------	---------------------------------



800	2000	KITBY	VGSI and RNAV glidepath not coincident (VGSI Angle 3.00/TCH 34).	
		KNOSP 1.8 NM to RWY 30	GP 3.00° TCH 35	
		HATXI 1900		
		GEVRY 2000		
CATEGORY	A	B	C	D
LPV DA	505-¾ 250 (300-¾)			NA
LNAV/VNAV DA	505-¾ 250 (300-¾)			NA
LNAV MDA	640-¾	385 (400-¾)	640-⅞ 385 (400-⅞)	NA
CIRCLING	680-1 425 (500-1)	720-1 465 (500-1)	760-1½ 505 (600-1½)	NA

SW-2, 08 SEP 2022 to 06 OCT 2022

SW-2, 08 SEP 2022 to 06 OCT 2022