

# CHIEF NINE DEPARTURE

AL-6104 (FAA)

LEE'S SUMMIT MUNI (LXT)

LEE'S SUMMIT, MISSOURI

**TOP ALTITUDE:  
10000**

RADAR required.

KANSAS CITY DEP CON  
118.4 307.35  
CLNC DEL  
118.45

ST. JOSEPH  
115.5 STJ  
Chan 102

R-160

R-199

R-343

(A11)

\*2800

\*5000

CATTS

8000

\*3000

266°

(37)

[66]

[J80]

OZAKI

[J80]

8000

\*3000

266°

(29)

KANSAS CITY  
113.25 MCI  
Chan 79(Y)

R-351

EMPORIA

EMPORIA  
112.8 EMP  
Chan 75

MSA MCI 30 NM

[3100]

### TAKEOFF MINIMUMS

Rwys 11, 18, 29, 36: Standard.

NOTE: Chart not to scale.

NC-3, 22 FEB 2024 to 21 MAR 2024

NC-3, 22 FEB 2024 to 21 MAR 2024



## DEPARTURE ROUTE DESCRIPTION

**TAKEOFF ALL RUNWAYS:** Climb on assigned heading for RADAR vectors to appropriate route. Maintain 10000 or as assigned by ATC, expect filed altitude 10 minutes after departure.

**CATTS TRANSITION (CHIEF9.CATTS):** From over MCI VORTAC on MCI R-266 to CATTS.

**ST. JOSEPH TRANSITION (CHIEF9.STJ):** From over MCI VORTAC on MCI R-343 and STJ R-160 to STJ VORTAC.

# CHIEF NINE DEPARTURE

(CHIEF9.MCI) 05OCT23

LEE'S SUMMIT, MISSOURI  
LEE'S SUMMIT MUNI (LXT)

LAKES FIVE DEPARTURE  
(LAKES5.MCI) 06OCT23

LEE'S SUMMIT, MISSOURI  
LEE'S SUMMIT MUNI (LXTT)

KANSAS CITY DEP CON  
118.4 307.35  
CLNC DEL  
118.45

**TOP ALTITUDE:  
10000**

RADAR required. DME required.

KANSAS CITY  
113.25 MCI Chan 79(Y)

15000  
\*2800  
075°  
(37)

BLUZY

J80

R-018

107°

\*2800

3100

(31)

NAPOLEON  
114.0 ANX Chan 87

3100  
\*3100  
088°  
(60)

V12

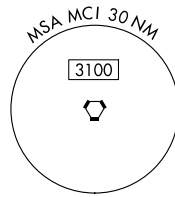
FRANC

V12

3100  
\*2700  
112°  
(32)

R-292

COLUMBIA  
110.2 COU Chan 39



SPINNER  
112.7 SPI Chan 74

8000  
\*2300  
085°  
(82)

J80

R-265

TWAIN

NOTE: Chart not to scale.

**DEPARTURE ROUTE DESCRIPTION**

**TAKEOFF ALL RUNWAYS:** Climb on assigned heading for RADAR vectors to appropriate route. Maintain 10000 or as assigned by ATC. Expect filed altitude 10 minutes after departure.

**COLUMBIA TRANSITION (LAKES5.COU):** From over MCI VORTAC on MCI R-107 to ANX VORTAC, then on ANX R-088 and COU R-292 to COU VOR/DME.

**FRANC TRANSITION (LAKES5.FRANC):** From over MCI VORTAC on MCI R-107 to ANX VORTAC, then on ANX R-088 to FRANC.

**SPINNER TRANSITION (LAKES5.SPI):** From over MCI VORTAC on MCI R-075 and SPI R-265 to TWAIN, then on SPI R-265 to SPI VORTAC.

**TWAIN TRANSITION (LAKES5.TWAIN):** From over MCI VORTAC on MCI R-075 and SPI R-265 to TWAIN.

**TAKEOFF MINIMUMS**

Rwys 11, 18, 29, 36: Standard.



(LAKES5.MCI) 23278

AL-6104 (FAA)

LEE'S SUMMIT MUNI (LXTT)  
LEE'S SUMMIT, MISSOURI

(RACER8.MCI) 23278

# RACER EIGHT DEPARTURE

AL-6104 (FAA)

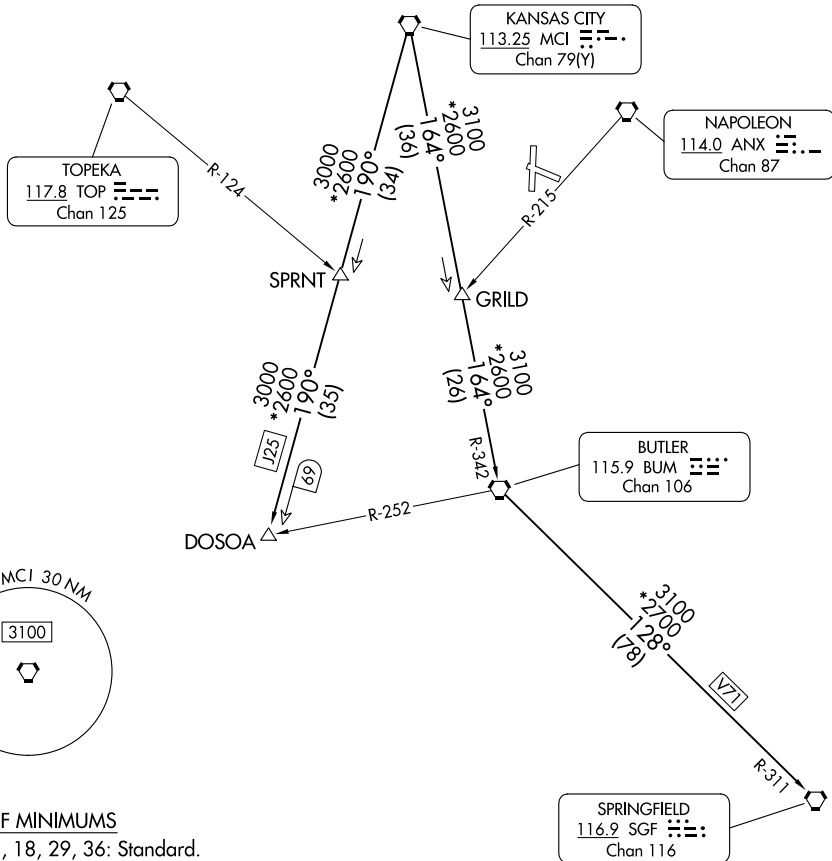
LEE'S SUMMIT MUNI (LXT)

LEE'S SUMMIT, MISSOURI

KANSAS CITY DEP CON  
118.4 307.35  
CLNC DEL  
118.45

RADAR required.

**TOP ALTITUDE:  
10000**



NOTE: Chart not to scale.

## DEPARTURE ROUTE DESCRIPTION

**TAKEOFF ALL RUNWAYS:** Climb on assigned heading for RADAR vectors to appropriate route. Maintain 10000 or as assigned by ATC, expect filed altitude 10 minutes after departure.

**BUTLER TRANSITION (RACER8.BUM):** From over MCI VORTAC on MCI R-164 and BUM R-342 to BUM VORTAC.

**DOSOIA TRANSITION (RACER8.DOSOIA):** From over MCI VORTAC on MCI R-190 to DOSOIA.

**SPRINGFIELD TRANSITION (RACER8.SGF):** From over MCI VORTAC on MCI R-164 and BUM R-342 to BUM VORTAC, then on BUM R-128 and SGF R-311 to SGF VORTAC.

# RACER EIGHT DEPARTURE

(RACER8.MCI) 05OCT23

LEE'S SUMMIT, MISSOURI

LEE'S SUMMIT MUNI (LXT)

NC-3, 22 FEB 2024 to 21 MAR 2024

NC-3, 22 FEB 2024 to 21 MAR 2024

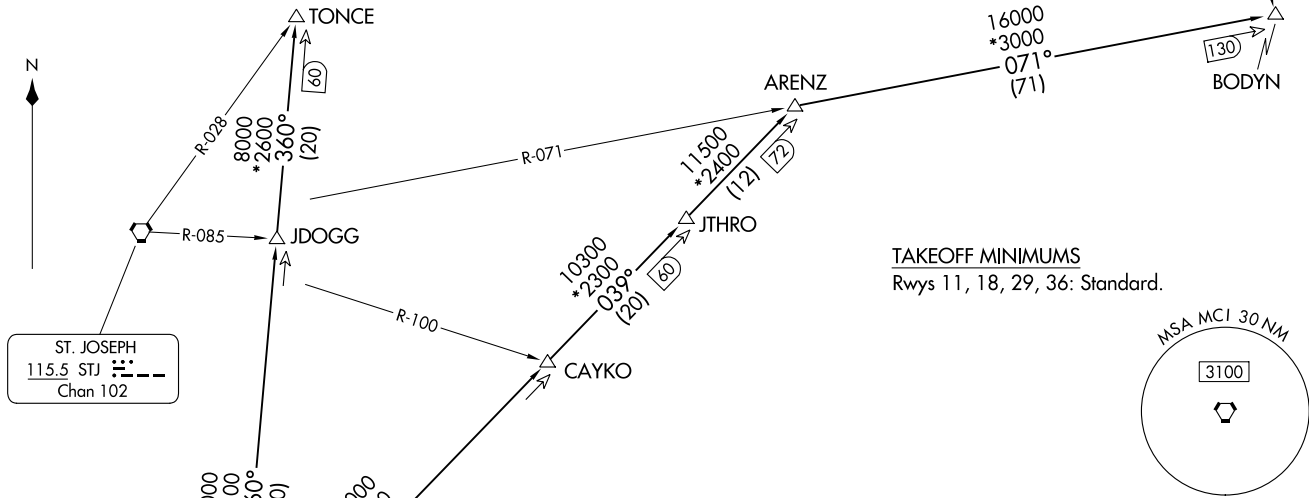
ROYAL ONE DEPARTURE  
(ROYAL1.MCI) 05OCT23

KANSAS CITY DEP CON  
118.4 307.35  
CLNC DEL  
118.45

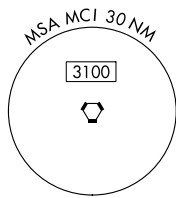
RADAR and DME required.

TOP ALTITUDE:  
10000

OTTUMWA  
111.6 OTM ---  
Chan 53



TAKEOFF MINIMUMS  
Rwys 11, 18, 29, 36: Standard.



DEPARTURE ROUTE DESCRIPTION

**TAKEOFF ALL RUNWAYS:** Climb on assigned heading for RADAR vectors to appropriate route. Maintain 10000, expect filed altitude 10 minutes after departure.

**ARENZ TRANSITION (ROYAL1.ARENZ):** From over MCI VORTAC on MCI R-039 to ARENZ.

**BODYN TRANSITION (ROYAL1.BODYN):** From over MCI VORTAC on MCI R-039 to ARENZ, then on STJ R-071 to BODYN.

**TONCE TRANSITION (ROYAL1.TONCE):** From over MCI VORTAC on MCI R-360 to TONCE.

NOTE: Chart not to scale.



LEE'S SUMMIT, MISSOURI  
(LEE'S SUMMIT MUNI (LXT))

(ROYAL1.MCI) 23278  
ROYAL ONE DEPARTURE

AL-6104 (FAA)

LEE'S SUMMIT MUNI (LXT)  
LEE'S SUMMIT, MISSOURI

(TIFTO8.MCI) 23278

# TIFTO EIGHT DEPARTURE

AL-6104 (FAA)

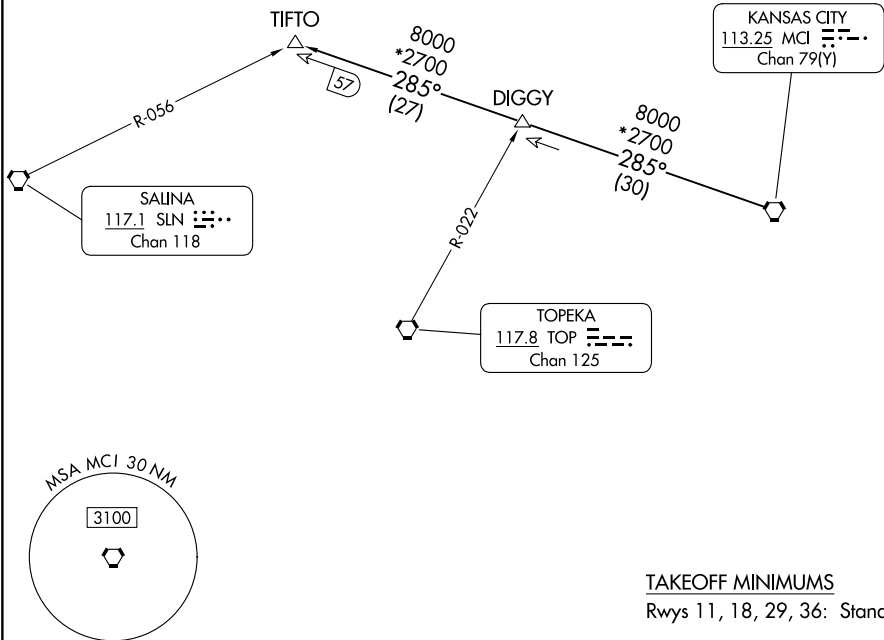
LEE'S SUMMIT MUNI (LXT)

LEE'S SUMMIT, MISSOURI

**TOP ALTITUDE:  
10000**

RADAR and DME required.

KANSAS CITY DEP CON  
118.4 307.35  
CLNC DEL  
118.45



NC-3, 22 FEB 2024 to 21 MAR 2024

NC-3, 22 FEB 2024 to 21 MAR 2024

## DEPARTURE ROUTE DESCRIPTION

**TAKEOFF ALL RUNWAYS:** Climb on assigned heading for RADAR vectors to appropriate route. Maintain 10000, expect filed altitude 10 minutes after departure.

**TIFTO TRANSITION (TIFTO8.TIFTO):** From over MCI VORTAC on MCI R-285 to TIFTO.

NOTE: Chart not to scale

# TIFTO EIGHT DEPARTURE

(TIFTO8.MCI) 05OCT23

LEE'S SUMMIT, MISSOURI  
LEE'S SUMMIT MUNI (LXT)

(WLDCT6.MCI) 23278

# WILDCAT SIX DEPARTURE

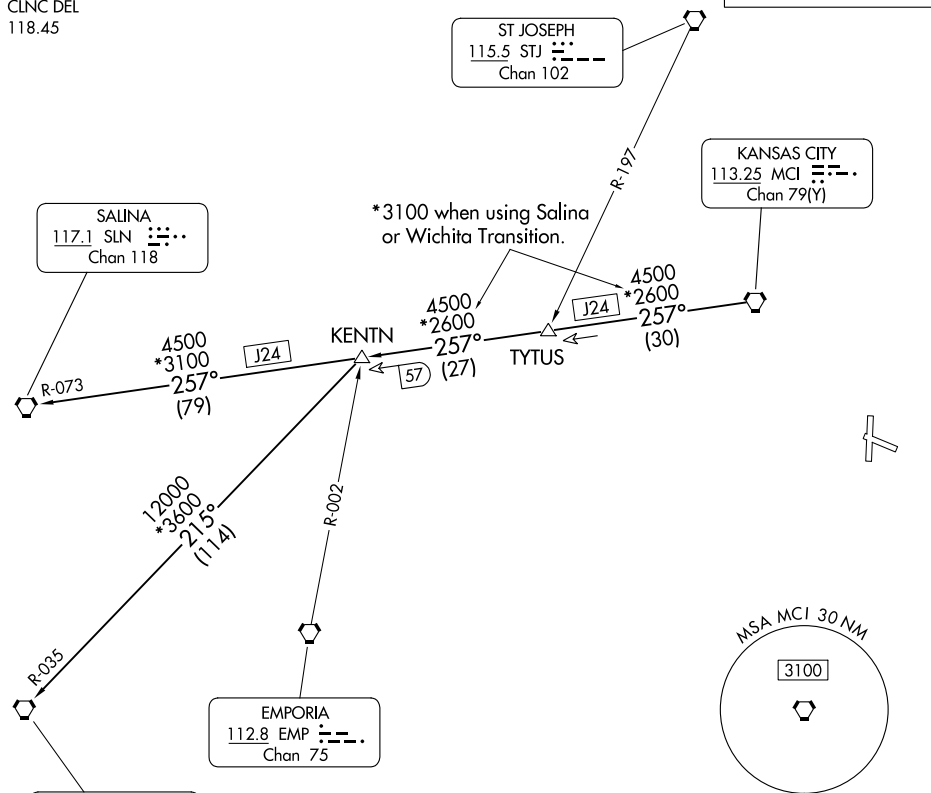
AL-6104 (FAA)

LEE'S SUMMIT MUNI (LXT)  
LEE'S SUMMIT, MISSOURI

KANSAS CITY DEP CON  
118.4 307.35  
CLNC DEL  
118.45

RADAR required.

**TOP ALTITUDE:  
10000**



NC-3, 22 FEB 2024 to 21 MAR 2024

NC-3, 22 FEB 2024 to 21 MAR 2024

**TAKEOFF MINIMUMS**  
Rwys 11, 18, 29, 36: Standard.

NOTE: Chart not to scale.

## DEPARTURE ROUTE DESCRIPTION

**TAKEOFF ALL RUNWAYS:** Climb on assigned heading for RADAR vectors to appropriate route. Maintain 10000, expect filed altitude 10 minutes after departure.

**KENTN TRANSITION (WLDCT6.KENTN):** From over MCI VORTAC on MCI R-257 to KENTN.

**SALINA TRANSITION (WLDCT6.SLN):** From over MCI VORTAC on MCI R-257 and SLN R-073 to SLN VORTAC.

**WICHITA TRANSITION (WLDCT6.ICT):** From over MCI VORTAC on MCI R-257 to KENTN, then on ICT R-035 to ICT VORTAC.

# WILDCAT SIX DEPARTURE

(WLDCT6.MCI) 05OCT23

LEE'S SUMMIT, MISSOURI  
LEE'S SUMMIT MUNI (LXT)