

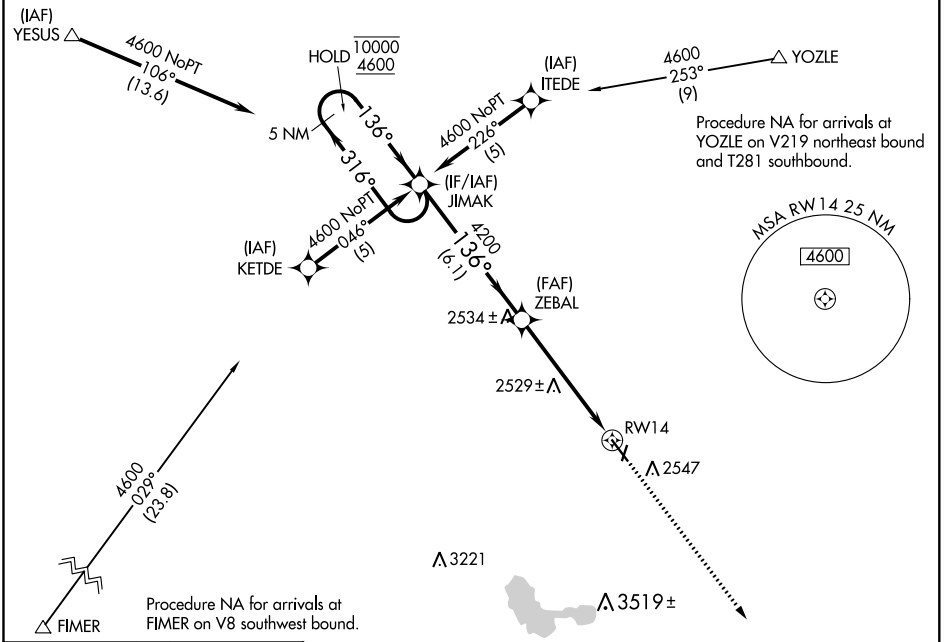
WAAS CH 61203 W14A	APP CRS 136°	Rwy Idg TDZE 2413 Apt Elev 2413
--	------------------------	---

RNAV (GPS) RWY 14

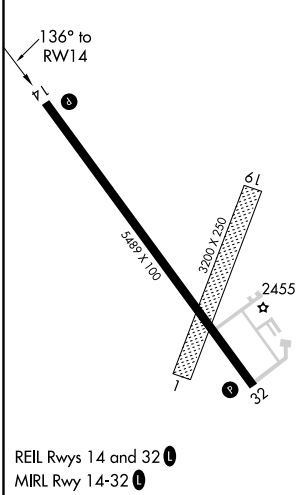
JIM KELLY FIELD (LXN)

RNP APCH. ▼ Circling NA to Rwys 1 and 19.	MISSED APPROACH: Climb to 4600 direct TEPTY and hold.
--	---

AWOS-3 121.025	DENVER CENTER 132.7 226.675	UNICOM 123.0 (CTAF) 📻
--------------------------	---------------------------------------	--



ELEV 2413	TDZE 2413
-----------	-----------



5 NM Holding Pattern 10000 4600 GP 3.00° TCH 40	JIMAK		ZEBAL	TEPTY
	← 316°	→ 136°	→ 136°	→ 136°
	6.1 NM	4.4 NM	1 NM	
CATEGORY	A	B	C	D
LPV DA	2663-1 250 (300-1)			
LNAV MDA	2780-1 367 (400-1)			2780-1¼ 367 (400-1¼)
C CIRCLING	2860-1 447 (500-1)	2940-1 527 (600-1)	2940-1½ 527 (600-1½)	2980-2 567 (600-2)

*LNAV only.
*1 NM to RWY 14

NC-2, 07 OCT 2021 to 04 NOV 2021

NC-2, 07 OCT 2021 to 04 NOV 2021

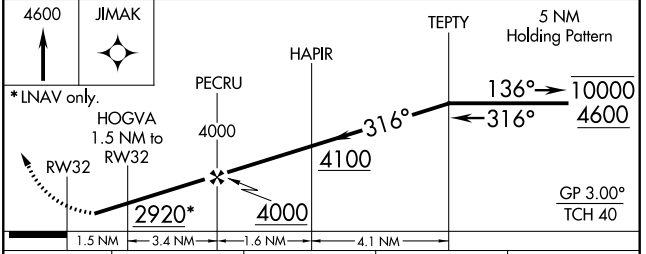
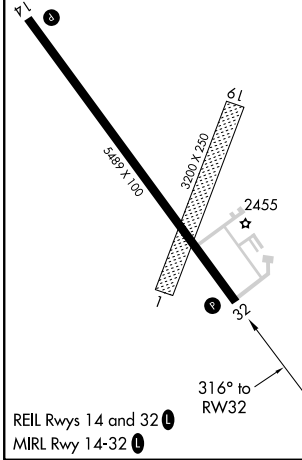
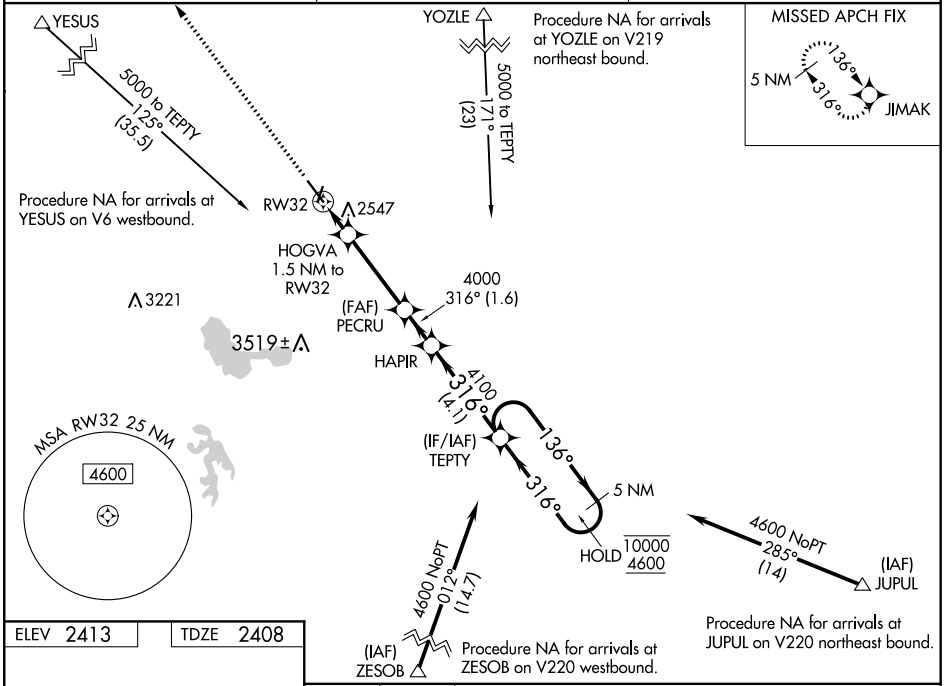
WAAS CH 49003 W32A	APP CRS 316°	Rwy Idg TDZE Apt Elev	5489 2408 2413
--	------------------------	-----------------------------	---

RNAV (GPS) RWY 32

JIM KELLY FIELD (LXN)

RNP APCH.	MISSED APPROACH: Climb to 4600 direct JIMAK and hold.
<p>⚠ Circling NA to Rws 1 and 19. Rwy 32 helicopter visibility reduction below 3/4 SM NA. For uncompensated Baro-VNAV systems, LNAV/VNAV NA below -21°C or above 54°C.</p>	

AWOS-3 121.025	DENVER CENTER 132.7 226.675	UNICOM 123.0 (CTAF) 0
--------------------------	---------------------------------------	---------------------------------



CATEGORY	A	B	C	D
LPV DA	2658-1		250 (300-1)	
LNAV/VNAV DA	2708-1		300 (300-1)	
LNAV MDA	2800-1		2800-1½ 392 (400-1½)	
C CIRCLING	2860-1 447 (500-1)	2940-1 527 (600-1)	2940-1½ 527 (600-1½)	2980-2 567 (600-2)

NC-2, 07 OCT 2021 to 04 NOV 2021

NC-2, 07 OCT 2021 to 04 NOV 2021