

WAAS CH 86700 W08A	APP CRS 079°	Rwy Idg 6100 TDZE 4129 Apt Elev 4170
--	------------------------	---

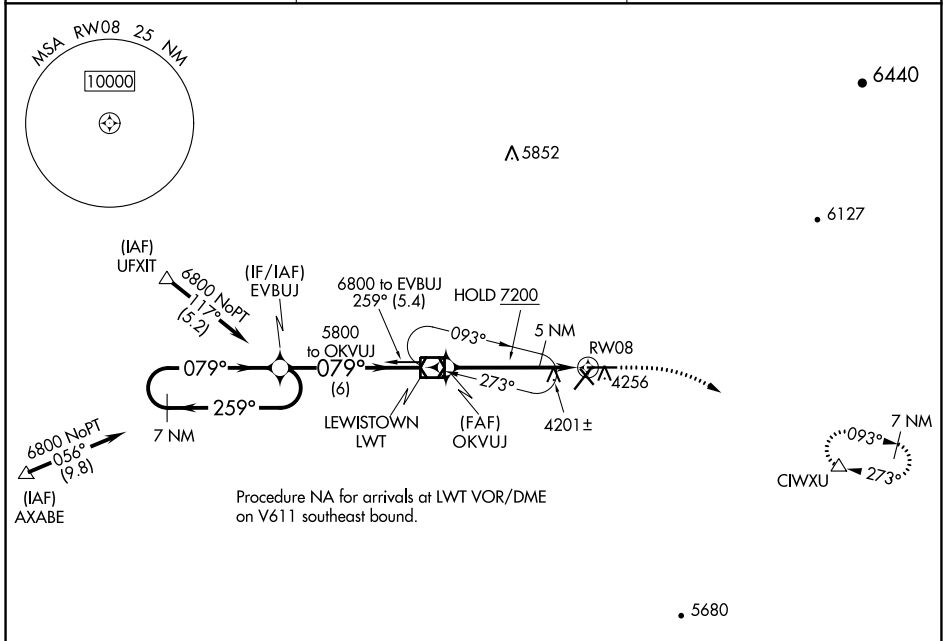
RNAV (GPS) RWY 8

LEWISTOWN MUNI (LWT)

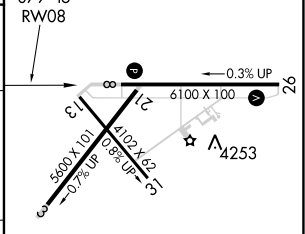
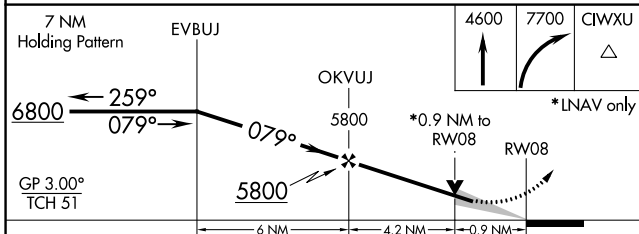
⚠ For uncompensated Baro-VNAV systems, LNAV/VNAV NA below -26°C (-14°F) or above 50°C (123°F).
DME/DME RNP-0.3 NA.

MISSED APPROACH: Climb to 4600, then climbing right turn to 7700 direct CIWXU and hold, continue climb-in-hold to 7700.

ASOS 118.375	SALT LAKE CENTER 133.4 285.4	UNICOM 123.0 (CTAF) ①
------------------------	--	---------------------------------



ELEV 4170	D TDZE 4129
-----------	--------------------



CATEGORY	A	B	C	D
LPV DA		4379-3/4	250 (300-3/4)	
LNAV/VNAV DA		4419-7/8	290 (300-7/8)	
LNAV MDA		4460-1	331 (300-1)	
C CIRCLING	4680-1 510 (600-1)	4820-1 650 (700-1)	4980-2 1/4 810 (900-2 1/4)	5240-3 1070 (1100-3)

REIL Rwy 8 and 26 ①
MIRL 8-26 and 13-31 ①

NW-1, 22 FEB 2024 to 21 MAR 2024

NW-1, 22 FEB 2024 to 21 MAR 2024

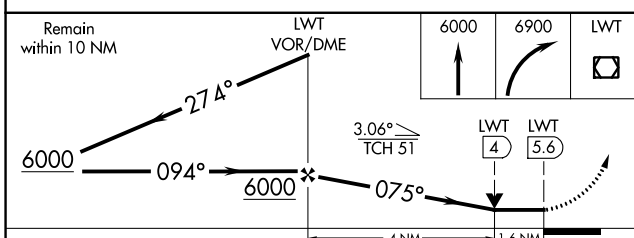
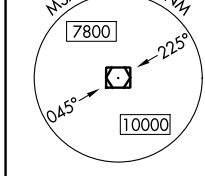
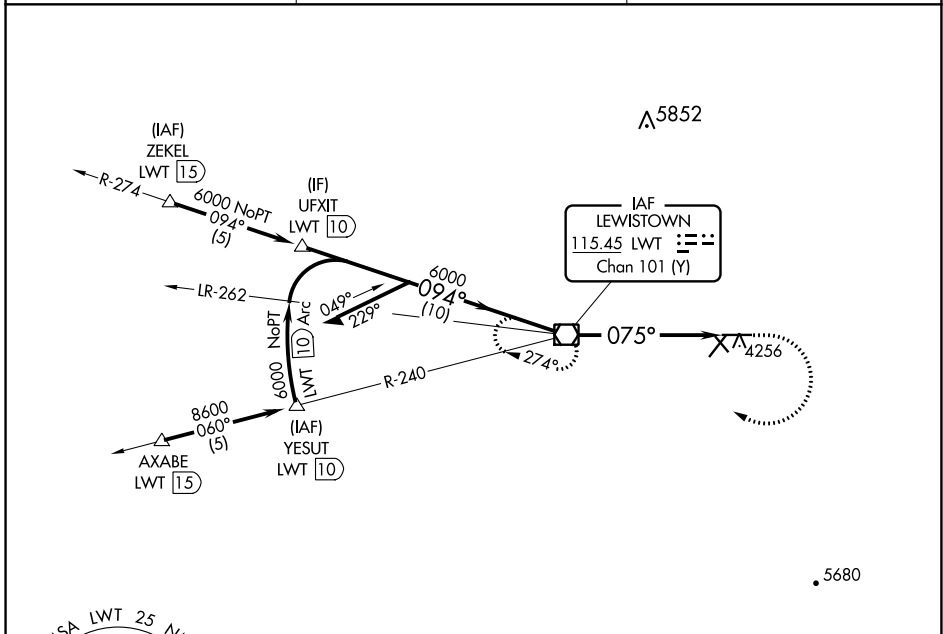
VOR/DME LWT 115.45 Chan 101 (Y)	APP CRS 075°	Rwy Idg 6100 TDZE 4129 Apt Elev 4170
---	------------------------	---

VOR RWY 8

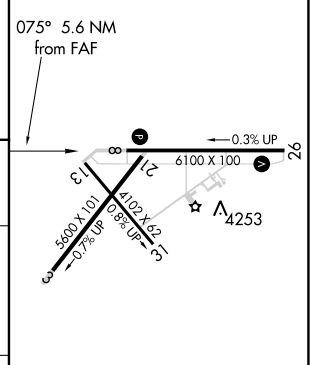
LEWISTOWN MUNI (LWT)

▲ MISSED APPROACH: Climb to 6000 then climbing right turn to 6900 direct LWT VOR/DME and hold.

ASOS 118.375	SALT LAKE CENTER 133.4 285.4	UNICOM 123.0 (CTAF) 0
------------------------	--	---------------------------------



ELEV 4170	D TDZE 4129
-----------	--------------------



CATEGORY	A	B	C	D
S-8	4680-1	551 (600-1)	4680-1½	551 (600-1½)
C CIRCLING	4680-1 510 (600-1)	4820-1 650 (700-1)	4980-2¼ 810 (900-2¼)	5240-3 1070 (1100-3)

REIL Rwy 8 and 26 0	MIRL 8-26 and 13-31 0
FAF to MAP 5.6 NM	
Knots	60 90 120 150 180
Min:Sec	5:36 3:44 2:48 2:14 1:52

NW-1, 22 FEB 2024 to 21 MAR 2024

NW-1, 22 FEB 2024 to 21 MAR 2024