

LOC/DME I-JQF 111.95 Chan 56(Y)	APP CRS 196°	Rwy Idg 6350 TDZE 699 Apt Elev 704
---	------------------------	---

ILS or LOC RWY 20

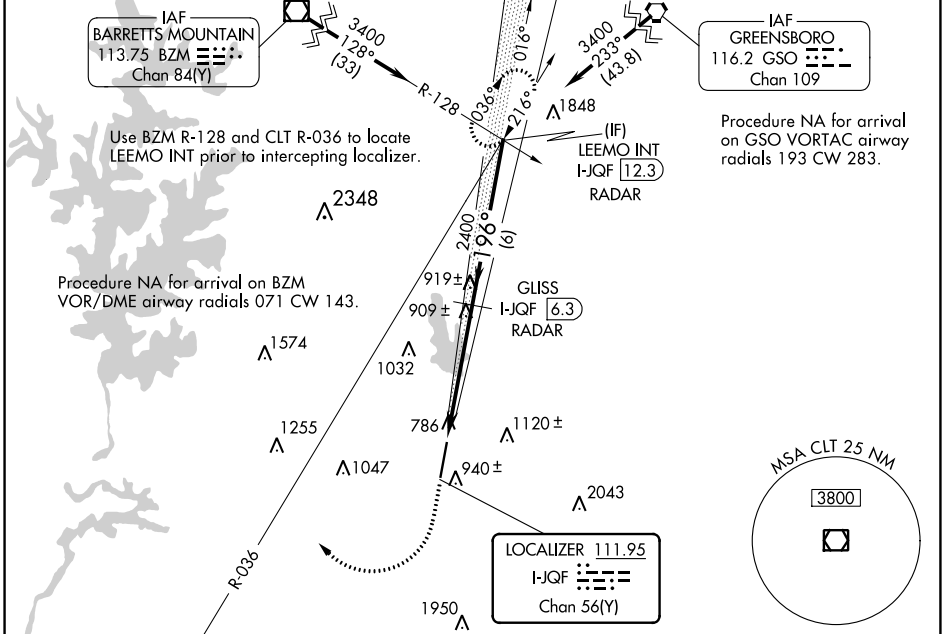
CONCORD-PADGETT RGNL (JQF)

DME or RADAR required for LOC only.

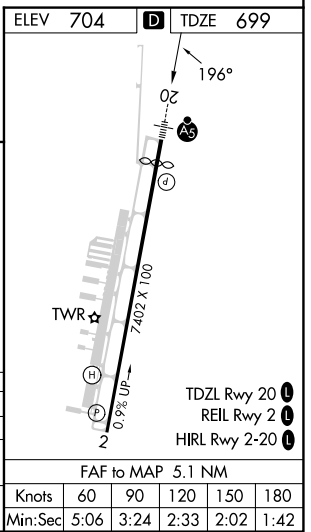
MALS MISSED APPROACH: Climb to 1200 then climbing right turn to 3400 on heading 020° and CLT VOR/DME R-036 to LEEMO INT/I-JQF 12.3 DME/RADAR and hold.

NA For inop ALS, increase S-LOC 20 Cat A/B visibility to 1 SM, Cat C/D visibility to 1 3/4 SM. Rwy 20 helicopter visibility reduction below 3/4 SM NA. S-ILS inop table does not apply.

ATIS* 133.675	CHARLOTTE APP CON 128.325 307.8	CONCORD TOWER* 134.65 (CTAF)	GND CON 121.85	CLNC DEL 118.55	CLNC DEL 127.25 (when twr closed)	UNICOM 122.95
-------------------------	---	--	--------------------------	---------------------------	--	-------------------------



ELEV 704	TDZE 699
----------	----------



CATEGORY	A	B	C	D
S-ILS 20		1026-3/4	327 (400-3/4)	
S-LOC 20	1160-3/4	461 (500-3/4)	1160-1	461 (500-1)
C CIRCLING	1300-1	596 (600-1)	1480-2 1/4 776 (800-2 1/4)	1480-2 1/2 776 (800-2 1/2)

SE-2, 22 FEB 2024 to 21 MAR 2024

SE-2, 22 FEB 2024 to 21 MAR 2024

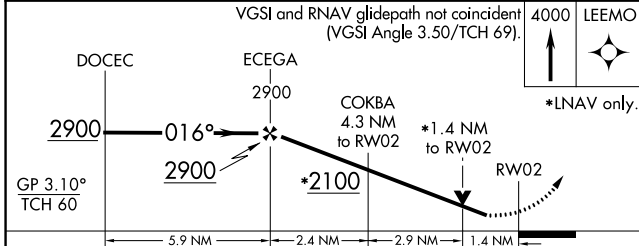
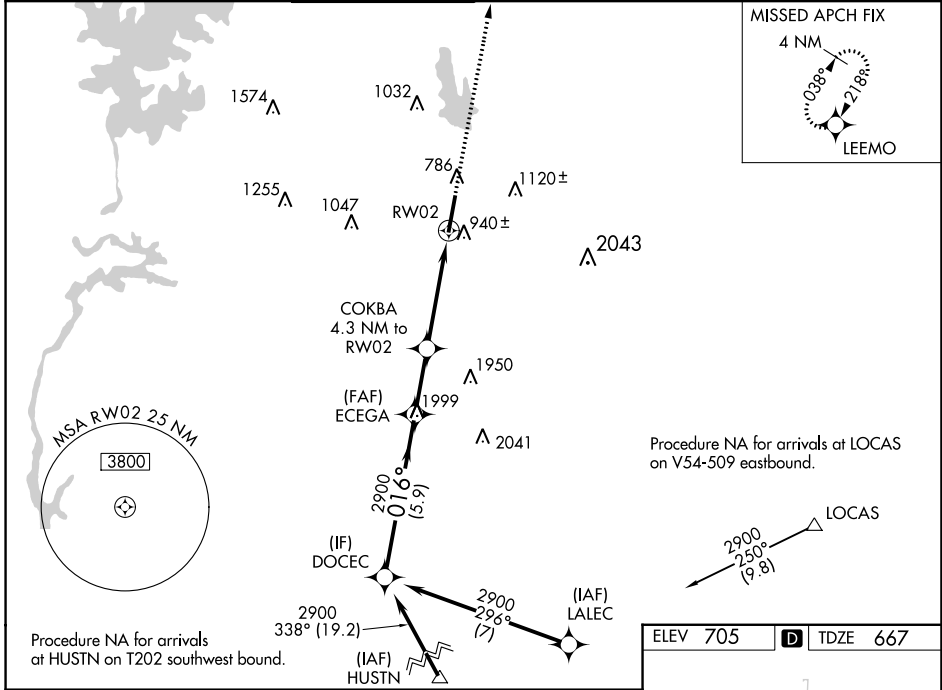
WAAS CH 93903 W02A	APP CRS 016°	Rwy Idg TDZE Apt Elev	7400 667 705
--	------------------------	-----------------------------	---

RNAV (GPS) RWY 2

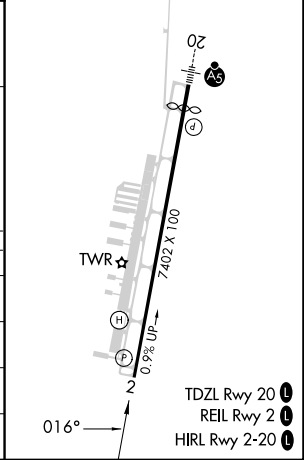
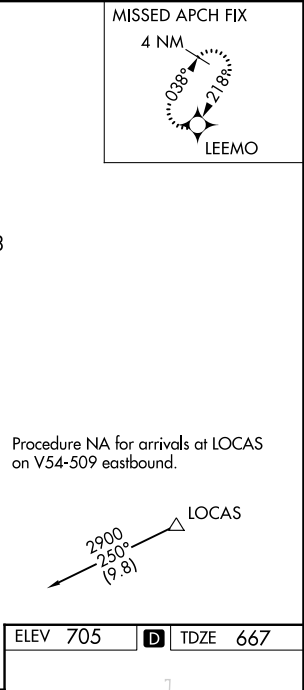
CONCORD-PADGETT RGNL (JQF)

RNP APCH.					MISSED APPROACH: Climb to 4000 direct LEEMO and hold, continue climb-in-hold to 4000.	
▼ Rwy 2 helicopter visibility reduction below 3/4 SM NA. ▲ For uncompensated Baro-VNAV systems, LNAV/VNAV NA below -16°C or above 45°C.						

ATIS* 133.675	CHARLOTTE APP CON 128.325 307.8	CONCORD TOWER* 134.65 (CTAF) 0	GND CON 121.85	CLNC DEL 118.55	CLNC DEL 127.25 (when twr closed)	UNICOM 122.95
-------------------------	---	--	--------------------------	---------------------------	--	-------------------------



CATEGORY	A	B	C	D
LPV DA	986-1 1/8		319 (300-1 1/8)	
LNAV/VNAV DA	1220-1 1/8		553 (600-1 1/8)	
LNAV MDA	1240-1	573 (600-1)	1240-1 1/8	573 (600-1 1/8)
C CIRCLING	1300-1	595 (600-1)	1480-2 1/4 775 (800-2 1/4)	1480-2 1/2 775 (800-2 1/2)



SE-2, 22 FEB 2024 to 21 MAR 2024

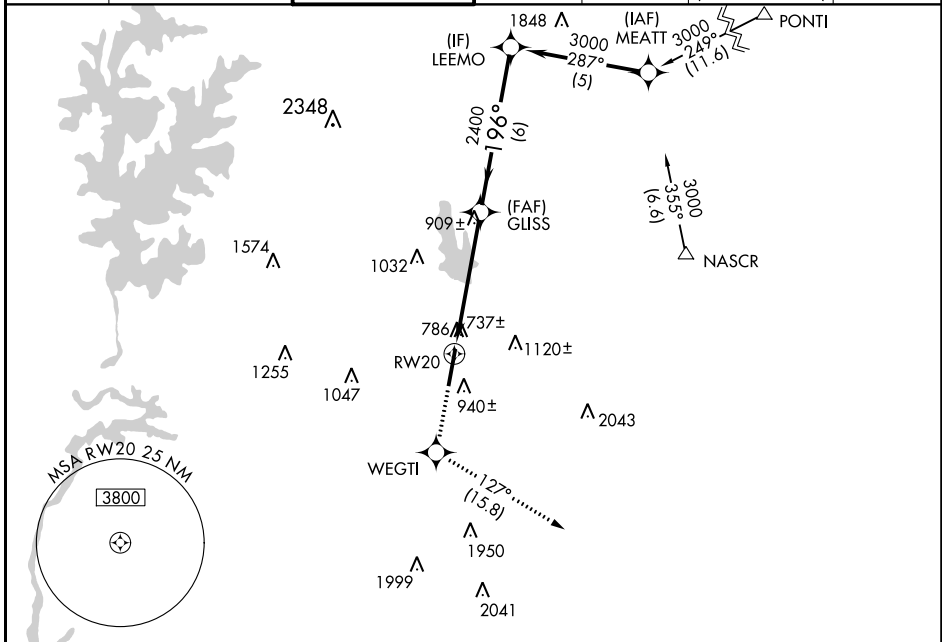
SE-2, 22 FEB 2024 to 21 MAR 2024

WAAS CH 56499 W20A	APP CRS 196°	Rwy Idg TDZE Apt Elev	6350 699 704
--	------------------------	-----------------------------	---

RNAV (GPS) RWY 20

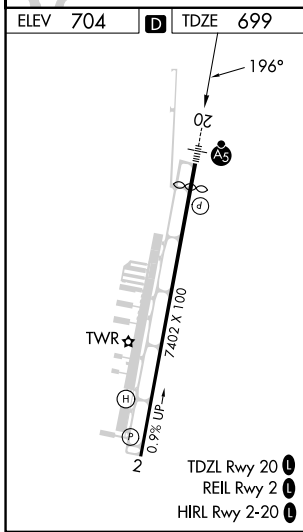
CONCORD-PADGETT RGNL (JQF)

RNP APCH-GPS.		MALSR		MISSED APPROACH: Climb to 3000 direct WEGTI and on track 127° to LOCAS and hold.		
<p>V For uncompensated Baro-VNAV systems, LNAV/VNAV NA below -16°C or above 54°C. For inop ALS, increase LNAV/VNAV visibility all Cats to 1½ SM. Rwy 20 helicopter visibility reduction below ¾ SM NA.</p>		<p>A5</p>				
ATIS★ 133.675	CHARLOTTE APP CON 128.325 307.8	CONCORD TOWER★ 134.65 (CTAF)	GND CON 121.85	CLNC DEL 118.55	CLNC DEL 127.25 (when twr closed)	UNICOM 122.95



SE-2, 22 FEB 2024 to 21 MAR 2024

SE-2, 22 FEB 2024 to 21 MAR 2024



ELEV 704	D	TDZE 699	LOCAS 093° 4 NM 273°	
3000	WEGTI	LOCAS	LEEMO	
↑	✧	△	3000	
*LNAV only.		GLISS		
RWY 20		*1.8 NM to RWY 20		2400
1.8 NM		3.3 NM		6 NM
196°		2400		GP 3.00° TCH 44
CATEGORY	A	B	C	D
LPV DA		1026-¾	327 (400-¾)	
LNAV/VNAV DA		1222-1¼	523 (600-1¼)	
LNAV MDA	1300-¾	601 (600-¾)	1300-1⅓	601 (600-1⅓)
C CIRCLING	1300-1	596 (600-1)	1480-2¼ 776 (800-2¼)	1480-2½ 776 (800-2½)