

WAAS CH <b>77815</b> <b>W11A</b>	APP CRS <b>103°</b>	Rwy Idg TDZE Apt Elev	<b>5500</b> <b>107</b> <b>107</b>
----------------------------------------	------------------------	-----------------------------	-----------------------------------------

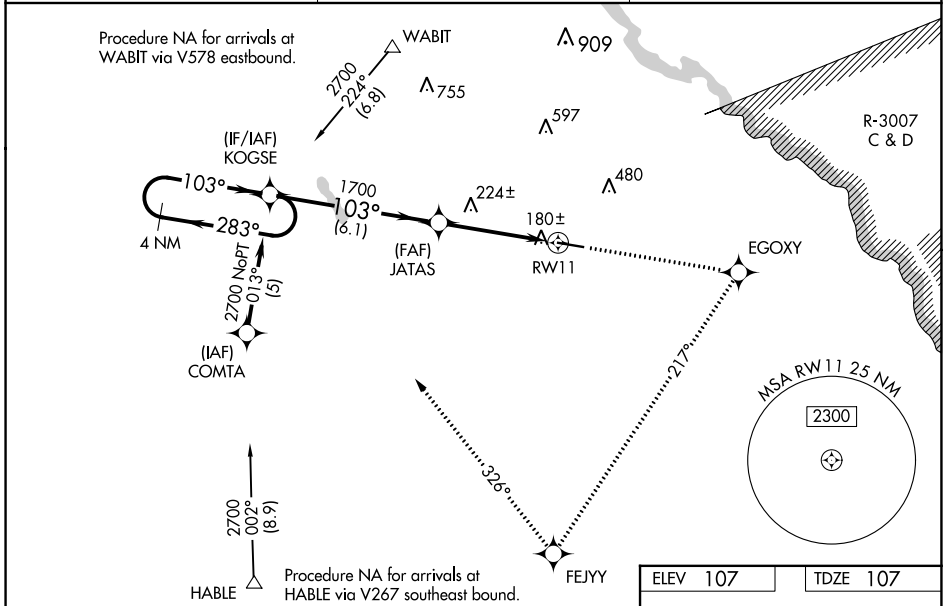
# RNAV (GPS) RWY 11

JESUP-WAYNE COUNTY (JES)

**NA** Baro-VNAV NA when using Savannah/Hilton Head Intl altimeter setting. For uncompensated Baro-VNAV systems, LNAV/VNAV NA below -1 5°C (5°F) or above 54°C (130°F). DME/DME RNP-0.3 NA. Helicopter visibility reduction below 1 statute mile NA. When local altimeter setting not received, use Savannah/Hilton Head Intl altimeter setting: increase LPV DA to 583, LNAV/VNAV DA to 597, and visibility LPV all Cats ½ SM and LNAV/VNAV all Cats ¼ SM; increase all MDAs 140 feet and visibility LNAV Cat C and Circling Cat C ½ SM. VDP NA when using Savannah/Hilton Head Intl altimeter setting.

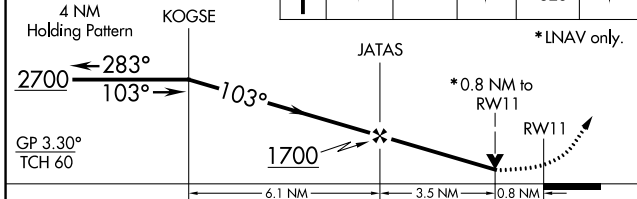
**MISSED APPROACH:** Climb to 2700 direct EGOXY and right turn via track 217° to FEJYY and right turn via track 326° to KOGSE and hold.

AWOS-3PT <b>118.125</b>	JACKSONVILLE CENTER <b>126.75 277.4</b>	UNICOM <b>122.8 (CTAF)</b>
----------------------------	--------------------------------------------	-------------------------------

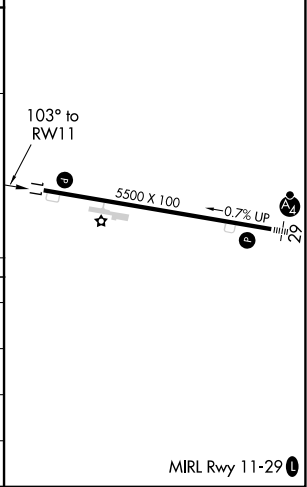


VGSI and RNAV glidepath not coincident (VGSI Angle 3.75/TCH 47).

2700	EGOXY	FEJYY	KOGSE
↑	tr 217°	tr 326°	



ELEV 107	TDZE 107
----------	----------



CATEGORY	A	B	C	D
LPV DA		462-1 355 (400-1)		NA
LNAV/VNAV DA		476-1¼ 369 (400-1¼)		NA
LNAV MDA		480-1 373 (400-1)		NA
CIRCLING	520-1 413 (500-1)	560-1 453 (500-1)	780-2 673 (700-2)	NA

MIRL Rwy 11-29

SE-4, 22 FEB 2024 to 21 MAR 2024

SE-4, 22 FEB 2024 to 21 MAR 2024

WAAS CH <b>53615</b> <b>W29A</b>	APP CRS <b>284°</b>	Rwy Idg TDZE <b>96</b> Apt Elev <b>107</b>
----------------------------------------	------------------------	--------------------------------------------------

# RNAV (GPS) RWY 29

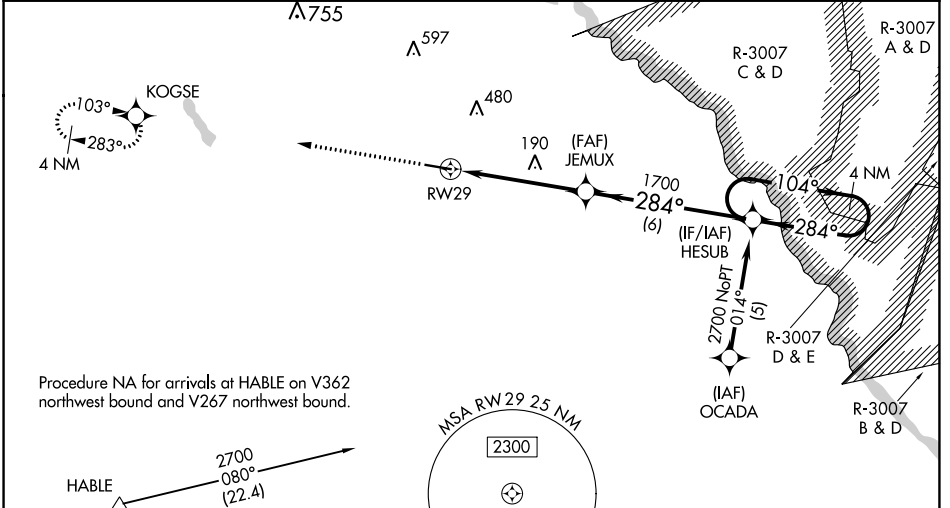
JESUP-WAYNE COUNTY (JES)

RNP APCH.

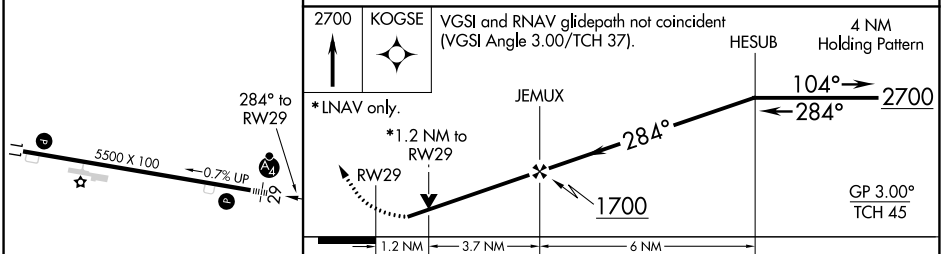
**⚠** Baro-VNAV and VDP NA when using Savannah/Hilton Head Intl altimeter setting.  
**⚠** For uncompensated Baro-VNAV systems, LNAV/VNAV NA below -15°C (5°F) or above 48°C (118°F). Rwy 29 helicopter visibility reduction below 3/4 SM NA. When local altimeter setting not received, use Savannah/Hilton Head Intl altimeter setting: increase LPV DA to 485 and LNAV/VNAV DA to 542; increase all MDA 140 feet and visibility LNAV Cat C 3/4 SM, Cat D 1/2 SM, and Circling Cat C/D 1/2 SM. Inop table does not apply to LPV and LNAV/VNAV all Cats and LNAV Cats A/B. For inop ALS, increase LNAV Cat C visibility to 1 1/8 SM. For inop ALS when using Savannah/Hilton Head Intl altimeter setting, increase LPV all Cats visibility to 1 1/8 SM and LNAV/VNAV all Cats visibility to 1 3/8 SM.

MALSF MISSED APPROACH: Climb to 2700 direct KOGSE and hold.

AWOS-3PT <b>118.125</b>	JACKSONVILLE CENTER <b>126.75 277.4</b>	UNICOM <b>122.8 (CTAF)</b>
----------------------------	--------------------------------------------	-------------------------------



ELEV 107	TDZE 96
----------	---------



CATEGORY	A	B	C	D
LPV DA		364-1	268 (300-1)	
LNAV/VNAV DA		421-1 1/4	325 (400-1 1/4)	
LNAV MDA		500-1 404 (400-1)		500-1 1/4 404 (400-1 1/4)
CIRCLING	520-1 413 (500-1)	560-1 453 (500-1)	780-2 673 (700-2)	780-2 1/4 673 (700-2 1/4)

MIRL Rwy 11-29

31°33'N-81°53'W

# RNAV (GPS) RWY 29

SE-4, 22 FEB 2024 to 21 MAR 2024

SE-4, 22 FEB 2024 to 21 MAR 2024