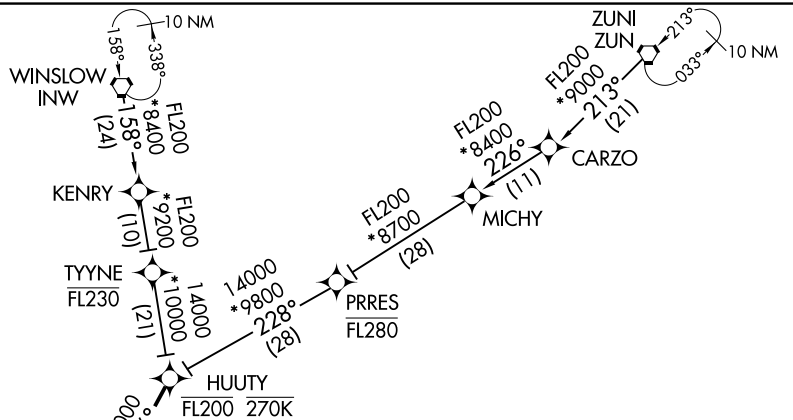


HUITY ONE ARRIVAL (RNAV)  
 (HUITY.HUITY1) 31MAY12

PHOENIX APP CON  
 124.9 353.8  
 PHOENIX-MESA GATEWAY TOWER \*  
 120.6 289.4  
 PHOENIX-MESA GATEWAY GND CON  
 128.25 275.8  
 CHD ATIS \*  
 128.325  
 FFZ ATIS  
 118.25  
 IWA ATIS \*  
 133.5 270.275



NOTE: Turbojet aircraft only.  
 NOTE: GPS required.  
 NOTE: RADAR required.  
 NOTE: RNAV 1.



ARRIVAL ROUTE DESCRIPTION

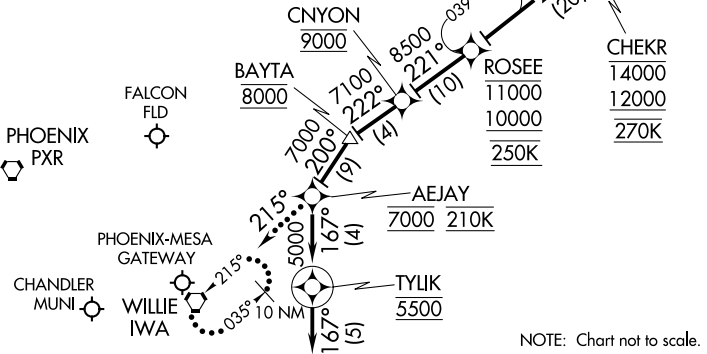
WINSLOW TRANSITION (INW.HUITY1)  
ZUNI TRANSITION (ZUN.HUITY1)

From HUITY on track 196° to CHEKR. Cross CHEKR between 12000 and 14000 and at 270 KTS. From CHEKR via 219° track to ROSEE, cross ROSEE between 10000 and 11000 and at 250 KTS, from ROSEE via 221° track to CNYON, cross CNYON at 9000, from CNYON via 222° track to BAYTA, cross BAYTA at 8000, from BAYTA via 200° track to AEJAY, cross AEJAY at 7000 and at 210 KTS, from AEJAY via 167° track to TYLIK, cross TYLIK at 5500, then on 167° heading. Expect RADAR vectors to final approach course.

LOST COMMUNICATIONS:

After AEJAY on track 215° direct IWA VORTAC. Hold NE, LT, 215° inbound, maintain 7000.

NOTE: Chart not to scale.



PHOENIX, ARIZONA  
 (HUITY.HUITY1)

HUITY ONE ARRIVAL (RNAV)  
 (HUITY.HUITY1) 21112

AL-74 (FAA)

PHOENIX, ARIZONA

ARLIN FOUR ARRIVAL  
(ARLIN,ARLIN4) 27 APR 17

### ARRIVAL ROUTE DESCRIPTION

**BLYTHE TRANSITION (BLH.ARLIN4):** From over BLH VORTAC on BLH R-089 and IWA R-256 to ARLIN INT. Thence. . . .

**MOHAK TRANSITION (MOHAK.ARLIN4):** From over MOHAK INT on GBN R-247 and BXK R-215 to HYDRR INT, then on IWA R-256 to ARLIN INT. Thence. . . .

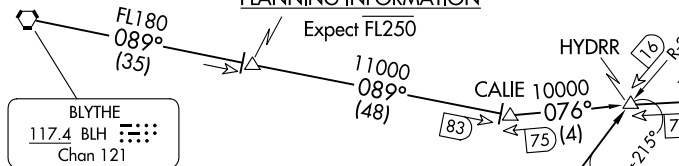
**PHOENIX SKY HARBOR INTL:** Rwy 7L/R or 8: From over ARLIN, Expect vectors to final approach course; Rwy 25L/R or 26: From over ARLIN, on IWA R-256 to TUKEE. Expect vectors to final approach course prior to TUKEE.

**SATELLITE AIRPORTS:** Expect vectors after passing SCOPE or JUDTH.

**LOST COMMUNICATIONS:** After ARLIN, on IWA R-256 and PXR R-143 to PXR VORTAC.

**NOTE:** BLYTHE Transition for turbojet aircraft FL240 and above.  
Turboprop aircraft plan BLYTHE ARRIVAL at or below FL230.  
**NOTE:** MOHAK Transition for turbojet and turboprop aircraft.  
**NOTE:** Turboprops landing KPHX expect vectors after passing SCOPE or JUDTH.

#### SCOPE VERTICAL NAVIGATION PLANNING INFORMATION



#### MOHAK VERTICAL NAVIGATION PLANNING INFORMATION

Turbojets expect FL250  
Turboprops expect 15000



#### VERTICAL NAVIGATION PLANNING INFORMATION

Landing WEST:  
Turbojets expect 14000  
Landing EAST:  
Turbojets expect 12000



PHOENIX-DEER VALLEY

SCOTTSDALE

PHOENIX  
115.6 PXR  
Chan 103

FALCON  
FLD

PHOENIX-SKY HARBOR INTL

STELLAR AIRPARK

PHOENIX-MESA GATEWAY

ALEYS

TUKEE

WILLIE  
113.3 IWA  
Chan 80

GILA BEND  
116.6 GBN  
Chan 113

**NOTE:** RADAR required  
**NOTE:** DME required  
**NOTE:** Chart not to scale.

- PHOENIX APP CON 124.1 256.9
- PHOENIX TOWER 118.7 278.8 (Rwy 8-26)
- 120.9 254.3 (Rwy 7L-25R, 7R-25L)
- PHOENIX GND CON 119.75 269.2
- CHD ATIS 128.325
- FFZ ATIS 118.25
- DVT ATIS 126.5
- IWA ATIS★ 133.5 270.275
- PHX D-ATIS 127.575
- SDL ATIS★ 118.6

(ARLIN,ARLIN4) 23334  
ARLIN FOUR ARRIVAL

AL-322 (FAA)

PHOENIX, ARIZONA

PHOENIX, ARIZONA

**BLYTHE FIVE ARRIVAL**  
(BLH.BLH5) 27 APR 17

**BLYTHE FIVE ARRIVAL**  
(BLH.BLH5) 23334

**ARRIVAL ROUTE DESCRIPTION**

**BLYTHE TRANSITION (BLH.BLH5):** From over BLH VORTAC on BLH R-082 to SALOM, then on GBN R-285 and IWA R-256 to ARLIN. Thence . . .

**PHOENIX SKY HARBOR INTL:** Rwy 7L/R or 8: From over ARLIN, expect vectors to final approach course; Rwy 25L/R or 26: From over ARLIN, on IWA R-256 to TUKEE. Expect vectors to final approach course prior to TUKEE.

**SATELLITE AIRPORTS:** Expect vectors after passing SALOM.

**LOST COMMUNICATIONS:** After ARLIN, on IWA R-256 and PXR R-143 to PXR VORTAC.

- PHOENIX APP CON 124.1 256.9
- PHOENIX TOWER 118.7 278.8 (Rwy 8-26)
- 120.9 254.3 (Rwy 7L-25R, 7R-25L)
- PHOENIX GND CON 119.75 269.2
- CHD ATIS 128.325
- FFZ ATIS 118.25
- DVT ATIS 126.5
- IWA ATIS \* 133.5 270.275
- PHX D-ATIS 127.575
- SDL ATIS \* 118.6



PHOENIX-DEER VALLEY

SCOTTSDALE

FALCON FLD

PHOENIX-MESA GATEWAY

TUKEE

CHANDLER MUNI

WILLIE 113.3 IWA --- Chan 80

PHOENIX 115.6 PXR --- Chan 103

PHOENIX-SKY HARBOR INTL

STELLAR AIRPARK

ALEYS

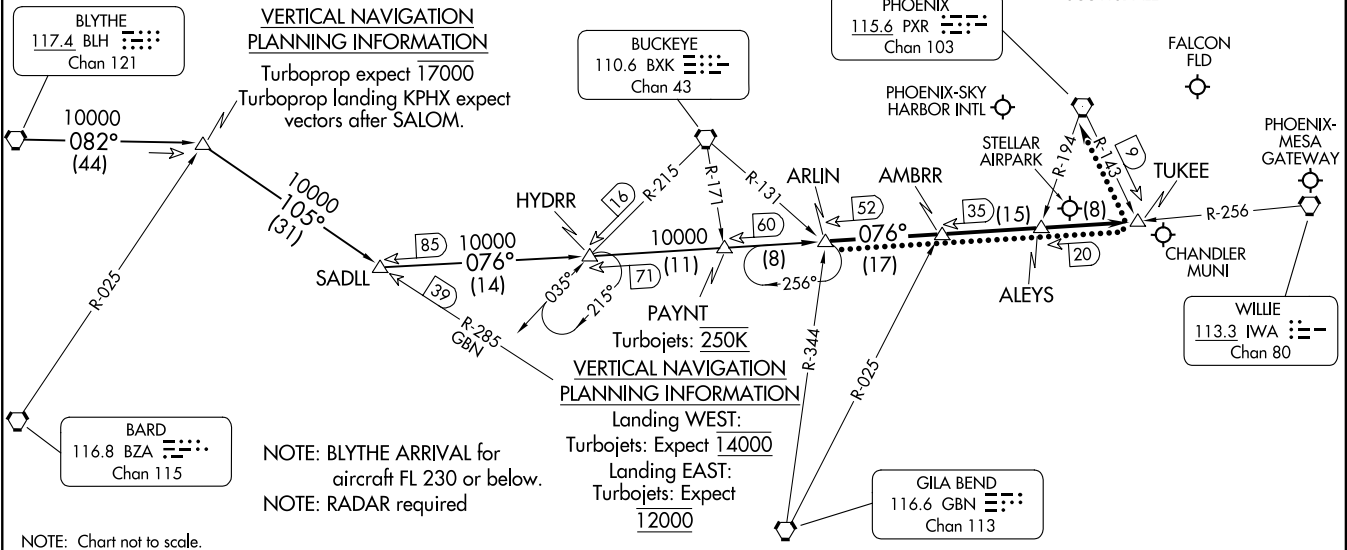
GILA BEND 116.6 GBN --- Chan 113

**SALOM VERTICAL NAVIGATION PLANNING INFORMATION**

Turboprop expect 17000  
Turboprop landing KPHX expect vectors after SALOM.

BUCKEYE 110.6 BXX --- Chan 43

**PAYNT VERTICAL NAVIGATION PLANNING INFORMATION**  
Landing WEST:  
Turbojets: Expect 14000  
Landing EAST:  
Turbojets: Expect 12000



NOTE: BLYTHE ARRIVAL for aircraft FL 230 or below.  
NOTE: RADAR required

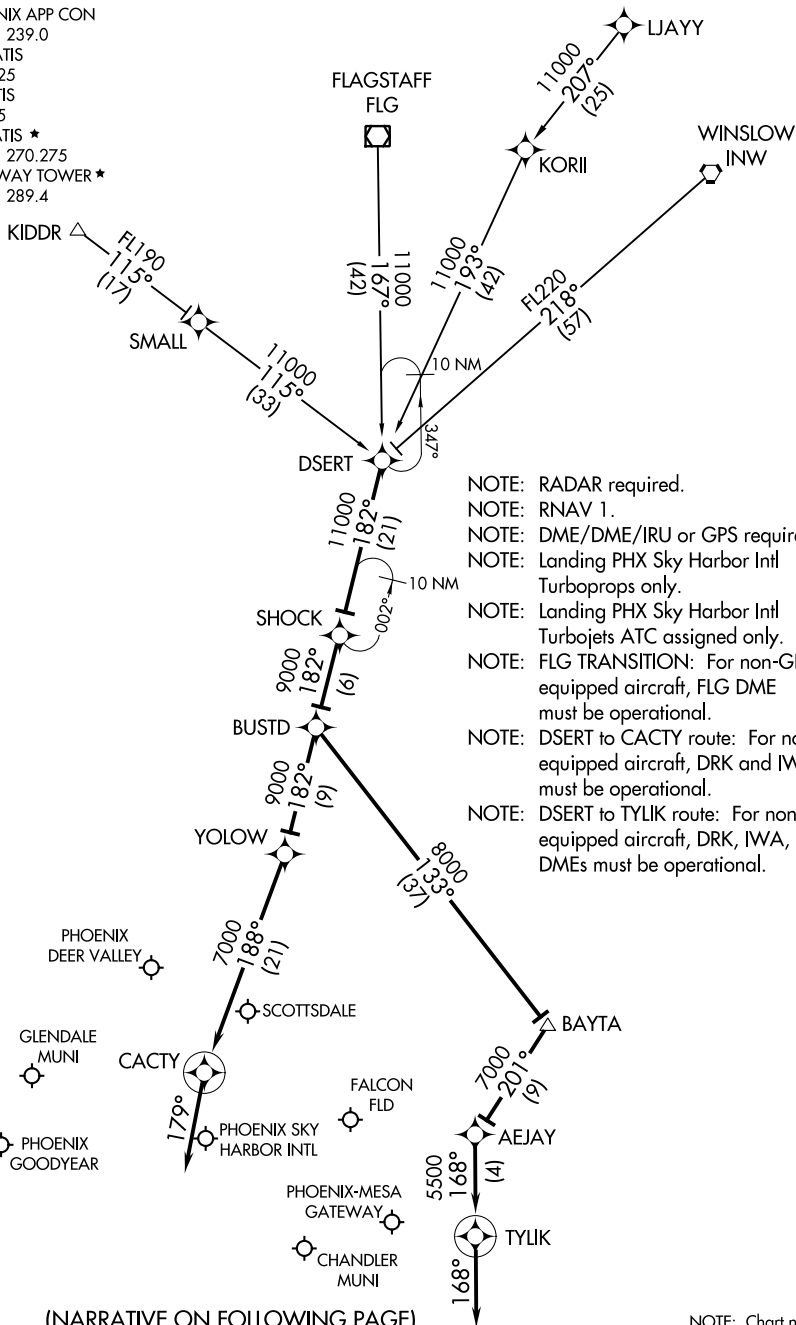
NOTE: Chart not to scale.

PHOENIX, ARIZONA

AL-322 (FAA)

PHOENIX, ARIZONA

PHOENIX APP CON  
 120.7 239.0  
 CHD ATIS  
 128.325  
 FFZ ATIS  
 118.25  
 IWA ATIS \*  
 133.5 270.275  
 GATEWAY TOWER \*  
 120.6 289.4



- NOTE: RADAR required.
- NOTE: RNAV 1.
- NOTE: DME/DME/IRU or GPS required.
- NOTE: Landing PHX Sky Harbor Intl Turboprops only.
- NOTE: Landing PHX Sky Harbor Intl Turbojets ATC assigned only.
- NOTE: FLAG TRANSITION: For non-GPS equipped aircraft, FLG DME must be operational.
- NOTE: DSERT to CACTY route: For non-GPS equipped aircraft, DRK and IWA DMEs must be operational.
- NOTE: DSERT to TYLIK route: For non-GPS equipped aircraft, DRK, IWA, and PXR DMEs must be operational.

(NARRATIVE ON FOLLOWING PAGE)

NOTE: Chart not to scale.

SW-4, 22 FEB 2024 to 21 MAR 2024

SW-4, 22 FEB 2024 to 21 MAR 2024

ARRIVAL ROUTE DESCRIPTION

FLAGSTAFF TRANSITION (FLG.DSERT2)

KIDDR TRANSITION (KIDDR.DSERT2)

LJAYY TRANSITION (LJAYY.DSERT2)

WINSLOW TRANSITION (INW.DSERT2)

From DSERT on track 182° to SHOCK, then on track 182° to BUSTD.

LANDING AT KDVT/KSDL/KGEU/KFFZ/KCHD/KGYR/KPHX:

From BUSTD on track 182° to YOLOW, then on track 188° to CACTY then on track 179°. Expect RADAR vectors.

LANDING AT KIWA: From BUSTD on track 133° to BAYTA, then on track 201° to AEJAY, then on track 168° to TYLIK, then on track 168°. Expect RADAR vectors.

SW-4, 22 FEB 2024 to 21 MAR 2024

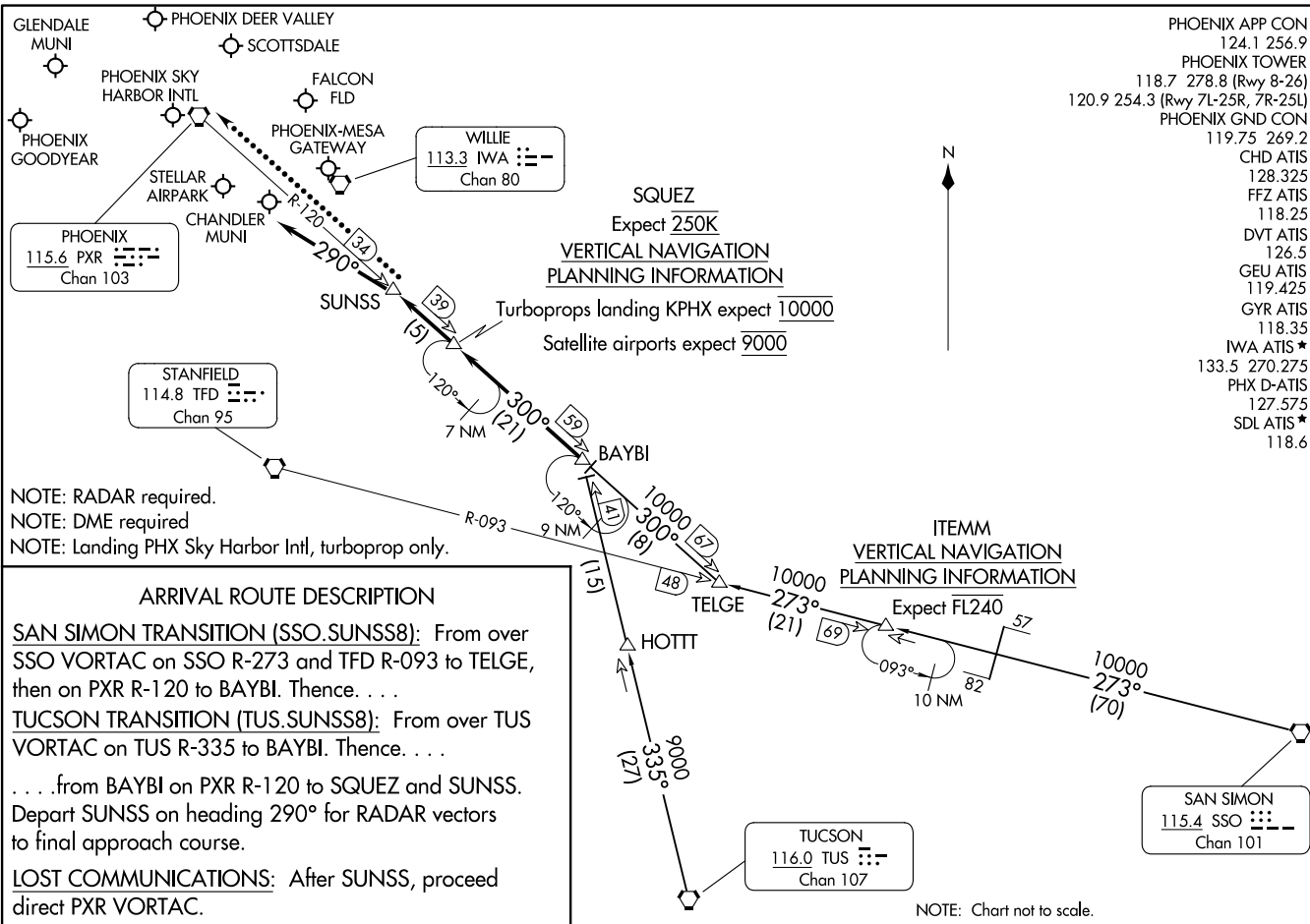
SW-4, 22 FEB 2024 to 21 MAR 2024

SUNSS EIGHT ARRIVAL  
(BAYBI.SUNSS8) 27APR17

(BAYBI.SUNSS8) 23334  
SUNSS EIGHT ARRIVAL

AL-322 (FAA)

PHOENIX, ARIZONA



- PHOENIX APP CON 124.1 256.9
- PHOENIX TOWER 118.7 278.8 (Rwy 8-26)
- 120.9 254.3 (Rwy 7L-25R, 7R-25L)
- PHOENIX GND CON 119.75 269.2
- CHD ATIS 128.325
- FFZ ATIS 118.25
- DVT ATIS 126.5
- GEU ATIS 119.425
- GYR ATIS 118.35
- IWA ATIS ★ 133.5 270.275
- PHX D-ATIS 127.575
- SDL ATIS ★ 118.6

NOTE: RADAR required.  
 NOTE: DME required  
 NOTE: Landing PHX Sky Harbor Intl, turboprop only.

**ARRIVAL ROUTE DESCRIPTION**  
**SAN SIMON TRANSITION (SSO.SUNSS8):** From over SSO VORTAC on SSO R-273 and TFD R-093 to TELGE, then on PXR R-120 to BAYBI. Thence. . . .  
**TUCSON TRANSITION (TUS.SUNSS8):** From over TUS VORTAC on TUS R-335 to BAYBI. Thence. . . .  
 . . . from BAYBI on PXR R-120 to SQUEZ and SUNSS. Depart SUNSS on heading 290° for RADAR vectors to final approach course.  
**LOST COMMUNICATIONS:** After SUNSS, proceed direct PXR VORTAC.

NOTE: Chart not to scale.

PHOENIX, ARIZONA