

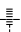
LOC I-INT 110.3	APP CRS 332°	Rwy Idg 6655
		TDZE 941
		Apt Elev 969

ILS or LOC RWY 33

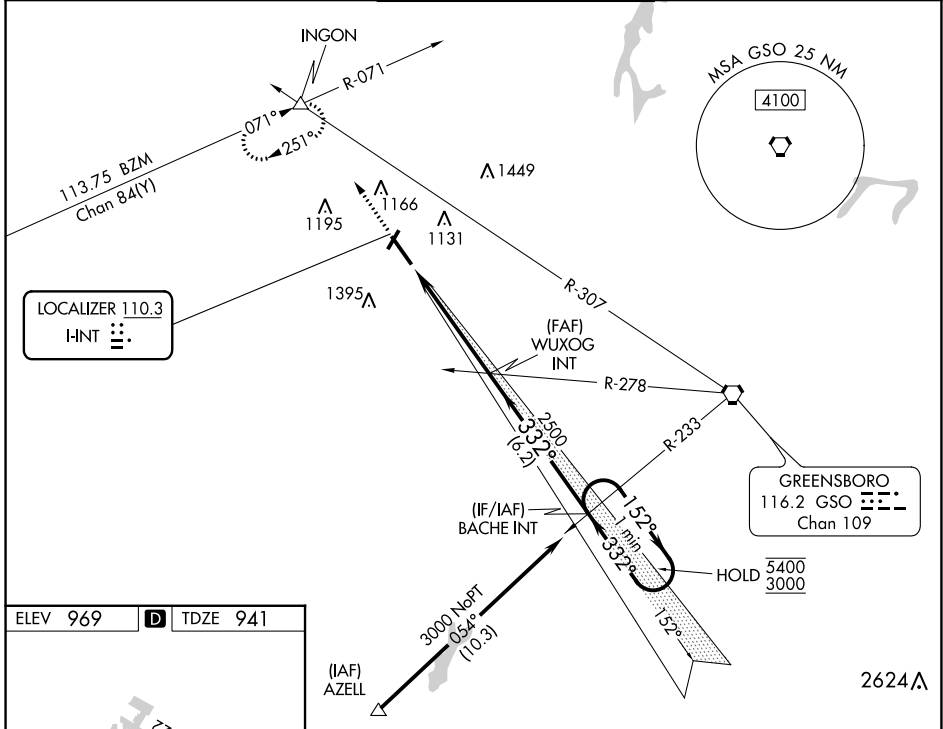
SMITH REYNOLDS (INT)

RNP APCH-GPS. From AZELL.
RADAR required for Non-GPS equipped aircraft.

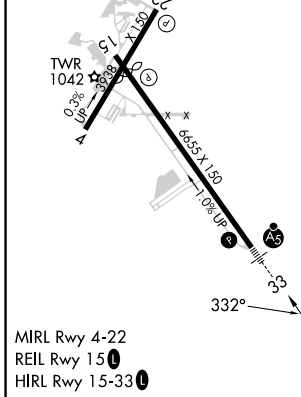
⚠ *RVR 1800 authorized with use of FD or AP or HUD to DA.

MALSR  MISSED APPROACH: Climb to 1400 then climbing right turn to 3500 on heading 341° and GSO VORTAC R-307 to INCON INT and hold, continue climb-in-hold to 3500.

ATIS 121.3	GREENSBORO APP CON 124.35 269.225	WINSTON-SALEM TOWER ★ 123.75 (CTAF) 0 257.8	GND CON 128.25	UNICOM 122.95
----------------------	---	---	--------------------------	-------------------------



ELEV 969	D	TDZE 941
----------	----------	----------



1400	3500	INGON	One Minute Holding Pattern	
↑	hdg 341°	GSO R-307	WUXOG INT	BACHE INT
			2500	2500
			152°	152°
			332°	332°
			4.8 NM	6.2 NM
			5400	3000
			GS 3.00°	TCH 57
CATEGORY	A	B	C	D
S-ILS 33*	1141/24 200 (200-1/2)			
S-LOC 33	1400/24	459 (500-1/2)	1400/45	459 (500-7/8)
CIRCLING	1480-1 511 (600-1)	1580-1 611 (700-1)	1700-2 731 (800-2)	1760-2 1/2 791 (800-2 1/2)

SE-2, 22 FEB 2024 to 21 MAR 2024

SE-2, 22 FEB 2024 to 21 MAR 2024

APP CRS **152°**
 Rwy Idg **6069**
 TDZE **968**
 Apt Elev **969**

RNAV (GPS) RWY 15
 SMITH REYNOLDS (INT)

RNP APCH.

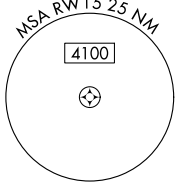
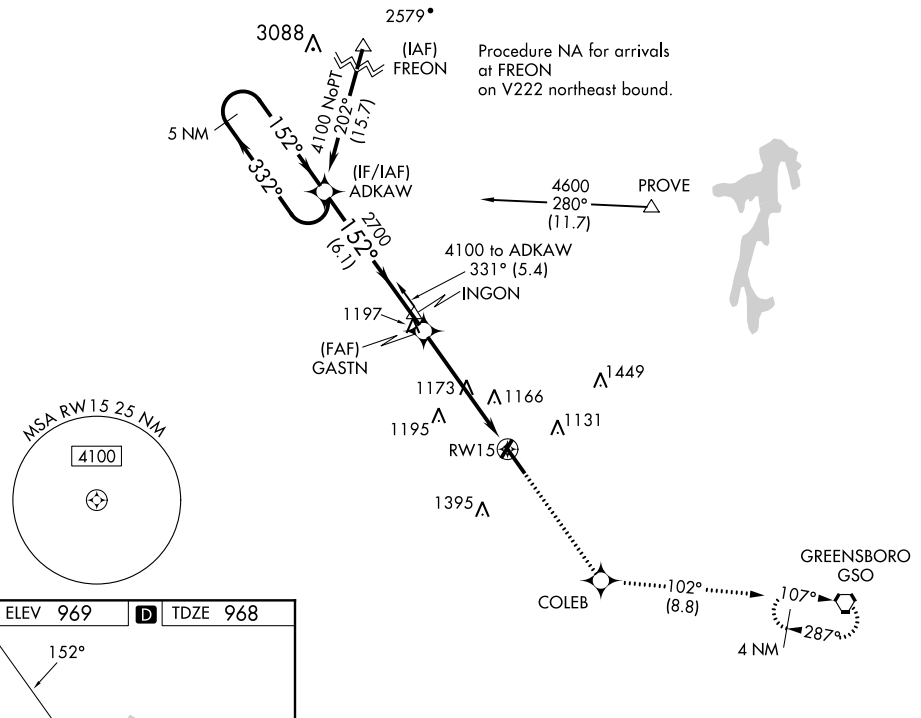
MISSED APPROACH:
 Climb to 3000 direct
 COLEB and on track 102°
 to GSO VORTAC and hold.

When local altimeter setting not received, use Piedmont Triad Intl altimeter setting and increase all MDA 40 feet and Circling Cats C/D visibility ¼ SM. Circling Rwy 4, 22 NA at night. Rwy 15 helicopter visibility reduction below ¾ SM NA.

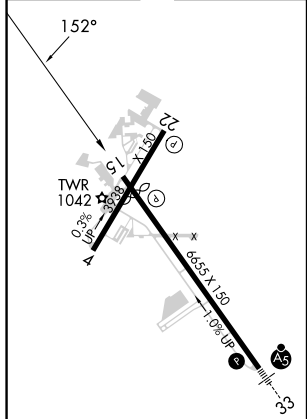
ATIS 121.3	GREENSBORO APP CON 124.35 269.225	WINSTON-SALEM TOWER ★ 123.75 (CTAF) 257.8	GND CON 128.25	UNICOM 122.95
----------------------	---	---	--------------------------	-------------------------

SE-2, 22 FEB 2024 to 21 MAR 2024

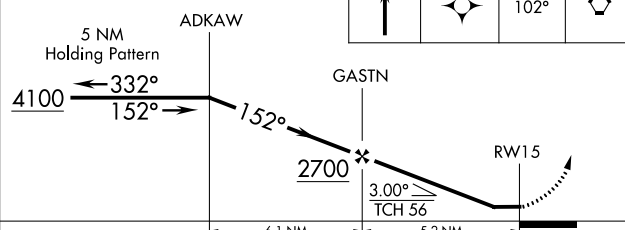
SE-2, 22 FEB 2024 to 21 MAR 2024



ELEV 969 D TDZE 968



VGSI and descent angles not coincident (VGSI Angle 3.00/TCH 38).



CATEGORY	A	B	C	D
LNAV MDA	1440-1	472 (500-1)	1440-1 $\frac{3}{8}$	472 (500-1 $\frac{3}{8}$)
CIRCLING	1480-1 511 (600-1)	1580-1 611 (700-1)	1700-2 731 (800-2)	1760-2 $\frac{1}{2}$ 791 (800-2 $\frac{1}{2}$)


MIRL Rwy 4-22
 REIL Rwy 15
 HIRL Rwy 15-33

WAAS CH 82011 W33A	APP CRS 332°	Rwy Idg TDZE 941 Apt Elev 969
--	------------------------	---

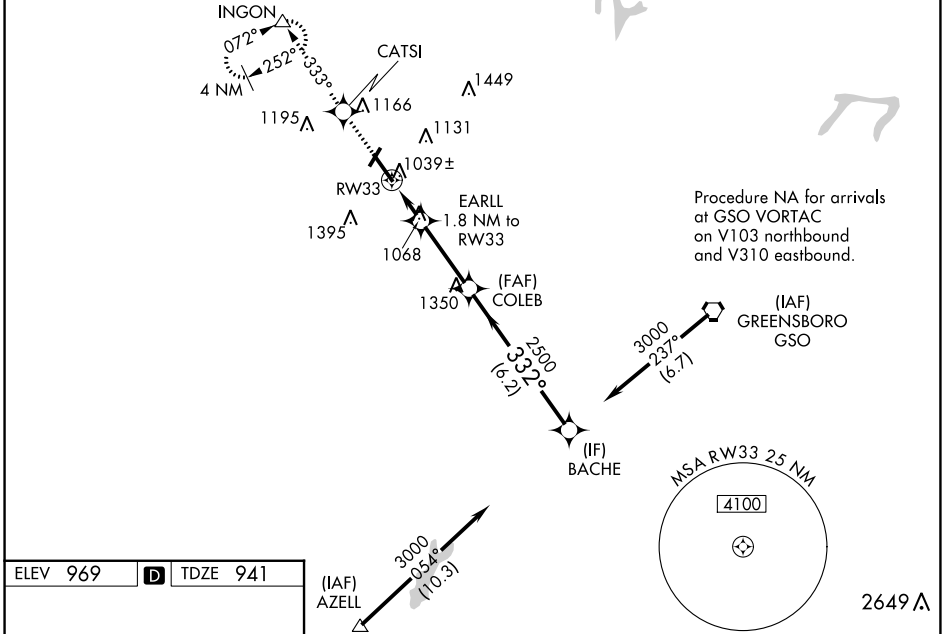
RNAV (GPS) RWY 33

SMITH REYNOLDS (INT)

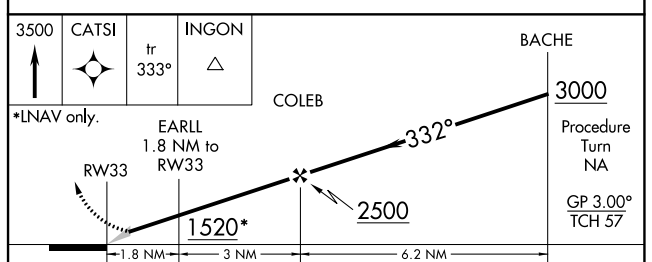
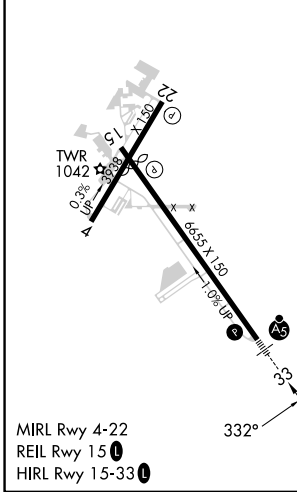
⚠ For inoperative MALSR, when using Piedmont Triad Intl altimeter setting, increase LPV all Cats visibility to 1 mile. Baro-VNAV NA when using Piedmont Triad Intl altimeter setting. For uncompensated Baro-VNAV systems, LNAV/VNAV NA below -1.6°C (4°F) or above 47°C (116°F). DME/DME RNP-0.3 NA. When local altimeter setting not received, use Piedmont Triad Intl altimeter setting; increase LPV DA to 1180 feet, LNAV/VNAV DA to 1446 feet and visibility all Cats ¼ SM; increase all MDA 40 feet and Circling visibility Cats C/D ¼ SM. ** RVR 1800 authorized with use of FD or AP or HUD to DA, NA when using Piedmont Triad Intl altimeter setting. Circling Rwy 4, 22 NA at night.

MALSR
 **AS**
MISSED APPROACH:
 Climb to 3500 direct CATSI and on 333° track to INGON and hold, continue climb-in-hold to 3500.

ATIS 121.3	GREENSBORO APP CON 124.35 269.225	WINSTON-SALEM TOWER ★ 123.75 (CTAF) 0 257.8	GND CON 128.25	UNICOM 122.95
----------------------	---	---	--------------------------	-------------------------



ELEV 969	D	TDZE 941
----------	----------	----------



CATEGORY	A	B	C	D
LPV DA**	1141/24 200 (200-1/2)			
LNAV/VNAV DA	1407/60 466 (500-1/4)			
LNAV MDA	1380/24	439 (500-1/2)	1380/40 439 (500-3/4)	1380/50 439 (500-1)
CIRCLING	1480-1 511 (600-1)	1580-1 611 (700-1)	1700-2 731 (800-2)	1760-2/2 791 (800-2/2)

SE-2, 22 FEB 2024 to 21 MAR 2024

SE-2, 22 FEB 2024 to 21 MAR 2024