

# ILS or LOC Rwy 19R

[USAF]

MC CONNELL AFB (KIAB)

LOC I-GWX	APCH CRS	Req'd Idg	19R 12 000	19L 12 007
<u>109.9</u>	<u>188°</u>	TDZE	19R 1372	19L 1365
		Appt Elev	1372	

RADAR or DME required

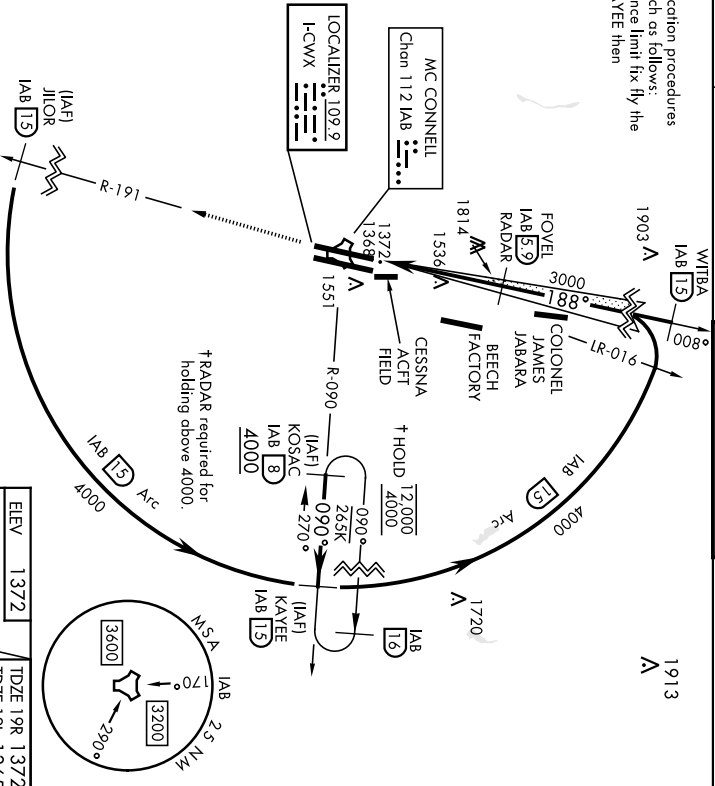
▲ \*\*When AIS Inop, increase RVR to 40 and vis to 3/4 mile to 1 mile. CAT DDE vis to 1 1/2 miles.  
\*\*\* Circling not authorized W of Kwy TL-19R.



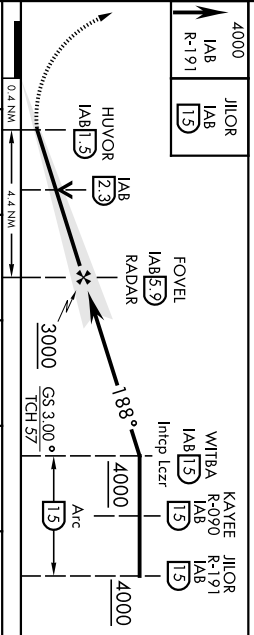
MISSED APPROACH: Climb to 4000, via IAB TACAN R-191 to 5 DME (IILOR). Expect further clearance from ATC.

D-ATIS	WICHITA APP CON	TOWER	GND CON
<b>124.65 269.9</b>	<b>134.8 269.1</b>	<b>127.25 291.775</b>	<b>118.0 275.8</b>

ATC lost communication procedures on missed approach as follows:  
At 1.5 DME clearance limit fix fly the 1.5 DME arc to KAYEE then KOSAC and hold.



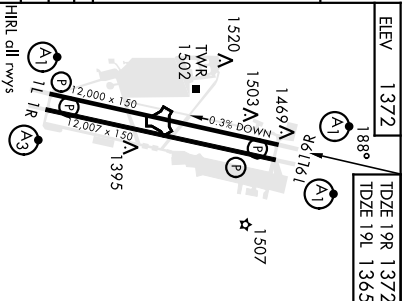
EMERG SAFE ALT 100 NM 4000



CATEGORY	A	B	C	D	E
S-ILS 19R **	1572/24		200	(200-1/2)	
S-LOC 19R ***	1820/24	448 (500-7/8)	1820/45	448 (500-7/8)	
SIDESTEP 19L	1820/55	455 (500-1)	1820-13%	455 (500-13%)	
CIRCLING	1900-1	528 (600-1)	1900-1 1/2	2400-3	1028 (1100-3)

HRR, all rws					
Knots	60	90	120	150	180
Min:Sec	4:24	2:56	2:12	1:46	1:28



WICHITA, KANSAS

# ILS or LOC RWY 1L

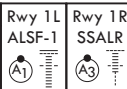
LOC I-IAB <b>111.1</b>	APCH CRS <b>008°</b>	Rwy Idg TDZE Arpt Elev	1L <b>12,000</b> <b>1347</b> <b>1372</b>	1R <b>12,007</b> <b>1347</b> <b>1372</b>
---------------------------	-------------------------	------------------------------	---	---

(USAF)

MC CONNELL AFB (KIAB)

RADAR or DME required

▼ \* When ALS inop, increase RVR to 40 and vis to 3/4 mile.  
\*\* When ALS inop, increase RVR to 55 and vis to 1 mile.



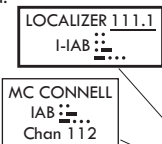
MISSED APPROACH: Climb to 4000 via IAB TACAN R-011 to 15 DME (PURKE). Expect further clearance from ATC.

D-ATIS <b>124.65 269.9</b>	WICHITA APP CON <b>134.8 269.1</b>	TOWER <b>127.25 291.775</b>	GND CON <b>118.0 275.8</b>
-------------------------------	---------------------------------------	--------------------------------	-------------------------------

\*\*\* When ALS inop, increase CAT AB RVR to 55 and vis to 1 mile, CAT CDE RVR to 60 and vis to 1 1/8.  
\*\*\*\* Circling not authorized W of Rwy 1L-19R.

ATC lost communication procedures on missed approach as follows: At 15 DME clearance limit fix fly the 15DME Arc to KAYEE then KOSAC and hold.

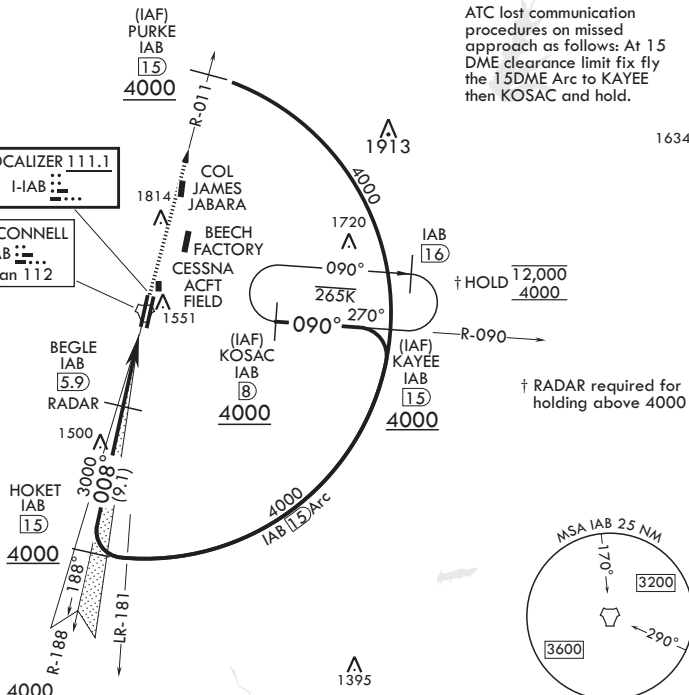
Practice circling approaches NE of IAB not authorized.



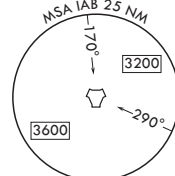
Rwy 1L glideslope unusable for coupled approaches at or below 1533' MSL

CAUTION: LOC front course unusable beyond 25° left/right of course.

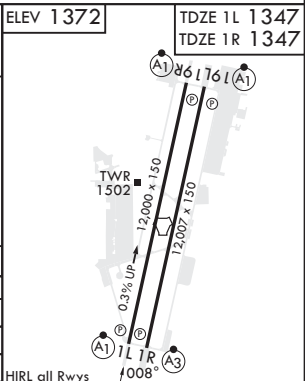
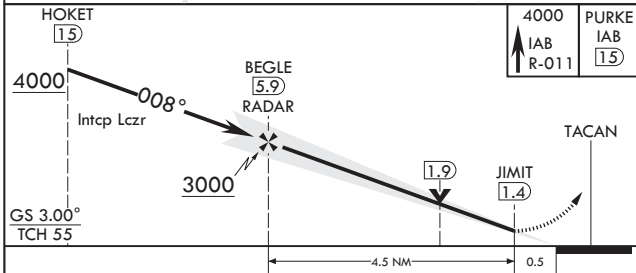
CAUTION: VGSI and ILS TCH are not coincidental.



1634



EMERG SAFE ALT 100 NM 4000



CATEGORY	A	B	C	D	E
S-ILS 1L*		1547/24	200	(200-1/2)	
S-LOC 1L**	1700/24	353 (400-1/2)	1700/35	353 (400-5/8)	
SIDESTEP 1R***		1720/40	373	(400-3/4)	
☐ CIRCLING****	1900-1 528 (600-1)	1900-1 1/2 528 (600-1/2)	2400-3 1028 (1100-3)		

FAF to MAP 4.5 NM					
Knots	60	90	120	150	180
Min:Sec	4:30	3:00	2:15	1:48	1:30

WICHITA, KANSAS  
Amdt 6 28DEC23

37°37'N - 97°16'W

MC CONNELL AFB (KIAB)

# ILS or LOC RWY 1L

NC-2, 22 FEB 2024 to 21 MAR 2024

NC-2, 22 FEB 2024 to 21 MAR 2024

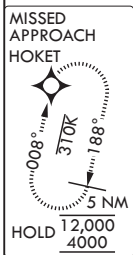
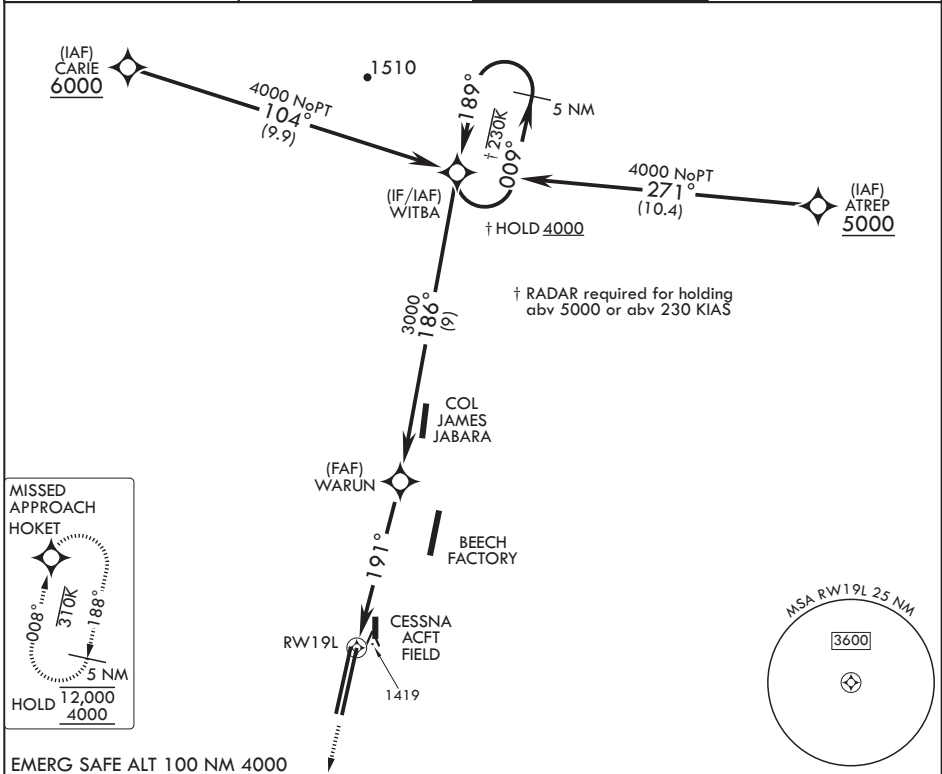
APCH CRS <b>191°</b>	Rwy Idg TDZE Arpt Elev <b>12,007</b> <b>1365</b> <b>1372</b>
-------------------------	---

- (USAF)

MC CONNELL AFB (KIAB)

DME/DME RNP-0.3 NA	ALSIF-1 	MISSED APPROACH: Climbing left turn to 4000 direct HOKET and hold.
--------------------	-------------	--

D-ATIS <b>124.65 269.9</b>	WICHITA APP CON <b>134.8 269.1</b>	TOWER <b>127.25 291.775</b>	GND CON <b>118.0 275.8</b>
-------------------------------	---------------------------------------	--------------------------------	-------------------------------



EMERG SAFE ALT 100 NM 4000

4000 ↑ HOKET 	5 NM Holding Pattern					ELEV 1372	TDZE 1365
CATEGORY	A	B	C	D	E		
LNAV MDA*	1800/40		435	(500-¾)			
CIRCLING**	1900-1 528 (600-1)		1900-1½ 528 (600-1½)	2400-3 1028 (1100-3)			

NC-2, 22 FEB 2024 to 21 MAR 2024

NC-2, 22 FEB 2024 to 21 MAR 2024

WICHITA, KANSAS

# RNAV (GPS) RWY 19R

WAAS CH 71277 W19A	APCH CRS 189°	Rwy ldg TDZE Arprt Elev	12,000 1372 1372
--------------------------	------------------	-------------------------------	------------------------

(-USAF)

MC CONNELL AFB (KIAB)

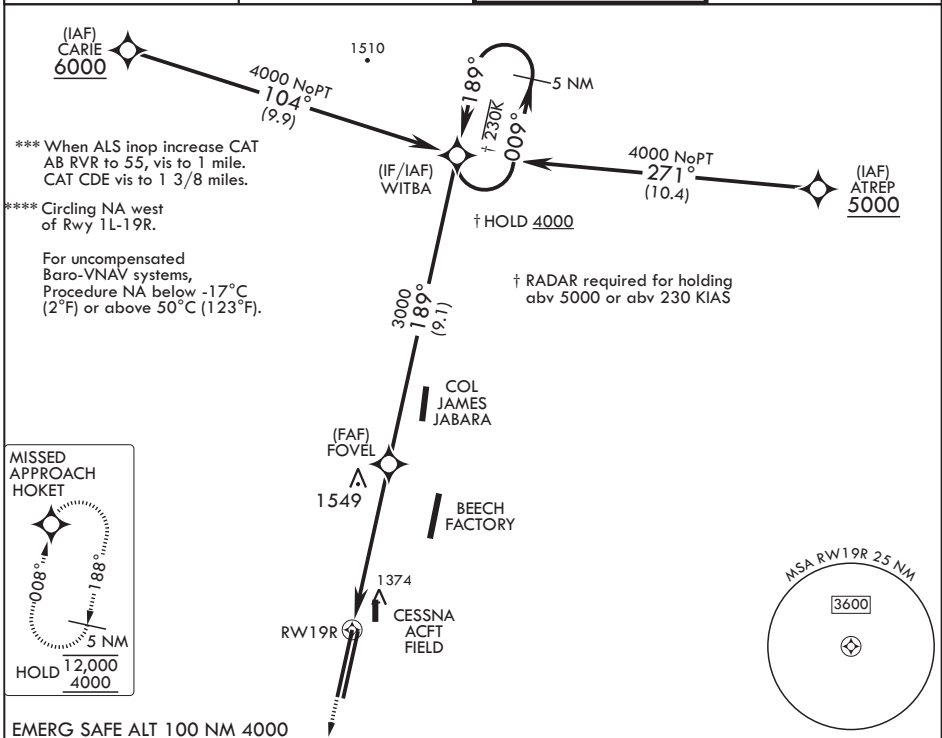
DME/DME RNP-0.3 NA



MISSED APPROACH: Climb to 4000 direct HOKET and hold.

▼ \* When ALS inop, increase RVR to 40, vis to 3/4 mile.  
\*\* When ALS inop, increase vis to 1 1/4 miles.

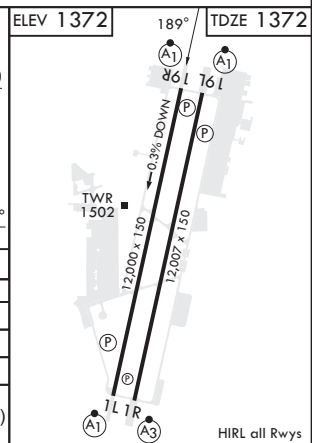
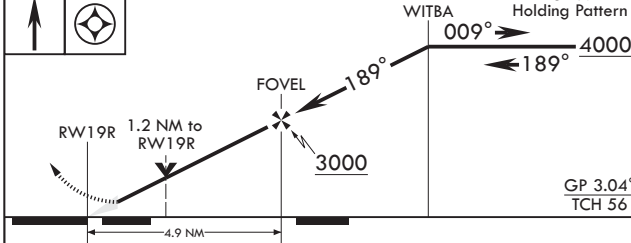
D-ATIS 124.65 269.9	WICHITA APP CON 134.8 269.1	TOWER 127.25 291.775	GND CON 118.0 275.8
------------------------	--------------------------------	-------------------------	------------------------



NC-2, 22 FEB 2024 to 21 MAR 2024

NC-2, 22 FEB 2024 to 21 MAR 2024

EMERG SAFE ALT 100 NM 4000



CATEGORY	A	B	C	D	E
LPV DA*	1572/24		200	(200-1/2)	
LNAV/VNAV DA**	1748/40		376	(400-3/4)	
LNAV MDA***	1820/24 448 (500-1/2)		1820/45	448 (500-3/4)	
☐ CIRCLING****	1900-1 528 (600-1)		1900-1 1/2 528 (600-1 1/2)	2400-3 1028 (1100-3)	

WICHITA, KANSAS  
Amdt 5 28DEC23

37°37'N - 97°16'W

MC CONNELL AFB (KIAB)

# RNAV (GPS) RWY 19R

WICHITA, KANSAS

# RNAV (GPS) RWY 1L

WAAS CH 71272 W01A	APCH CRS 008°	Rwy ldg TDZE 12,000 Arprt Elev 1347 1372
--------------------------	------------------	---

-(USAF)

MC CONNELL AFB (KIAB)

DME/DME RNP-0.3 NA



MISSED APPROACH: Climb to 4000 direct WITBA and hold.

\* When ALS inop, increase RVR to 40, vis to 3/4 mile.  
\*\* When ALS inop, increase vis to 1 1/4 miles.

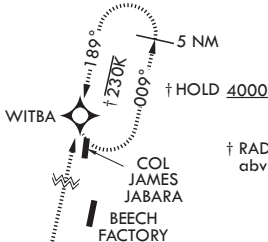
D-ATIS 124.65 269.9	WICHITA APP CON 134.8 269.1	TOWER 127.25 291.775	GND CON 118.0 275.8
------------------------	--------------------------------	-------------------------	------------------------

\*\*\* When ALS inop, increase CAT AB RVR to 55, vis to 1 mile; CAT CDE RVR to 60, vis to 1 1/8 miles.

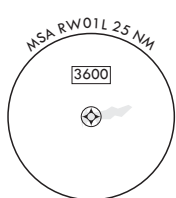
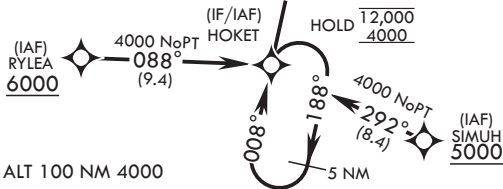
\*\*\*\* Circling not authorized west of Rwy 1L-19R.

1579

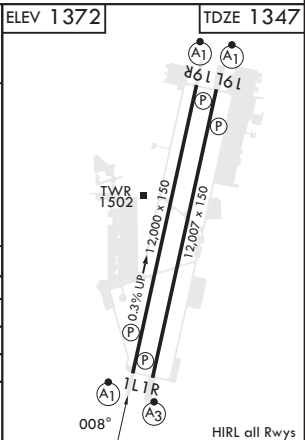
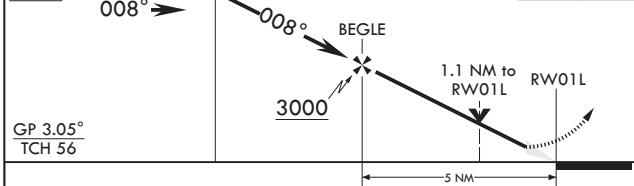
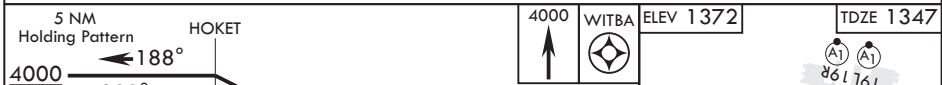
For uncompensated Baro-VNAV systems, Procedure NA below -17°C (2°F) or above 49°C (121°F).



† HOLD 4000  
† RADAR required for holding abv 5000 or abv 230 KIAS



EMERG SAFE ALT 100 NM 4000



CATEGORY	A	B	C	D	E
LPV DA*	1547/24		200	(200-1/2)	
LNAV/VNAV DA**	1732/40		385	(400-3/8)	
LNAV MDA***	1740/24	393 (400-1/2)	1740/35	393	(400-3/8)
<b>C</b> CIRCLING****	1900-1	528 (600-1)	1900-1 1/2 528 (600-1 1/2)	2400-3	1028 (1100-3)

WICHITA, KANSAS  
Amdt 4 28DEC23

37°37'N - 97°16'W

MC CONNELL AFB (KIAB)

# RNAV (GPS) RWY 1L

NC-2, 22 FEB 2024 to 21 MAR 2024

NC-2, 22 FEB 2024 to 21 MAR 2024

# RNAV (GPS) RWY 1R

APCH CRS	Rwy Idg	12,007
005°	TDZE	1347
	Arpt Elev	1372

- (USAF)

MC CONNELL AFB (KIAB)

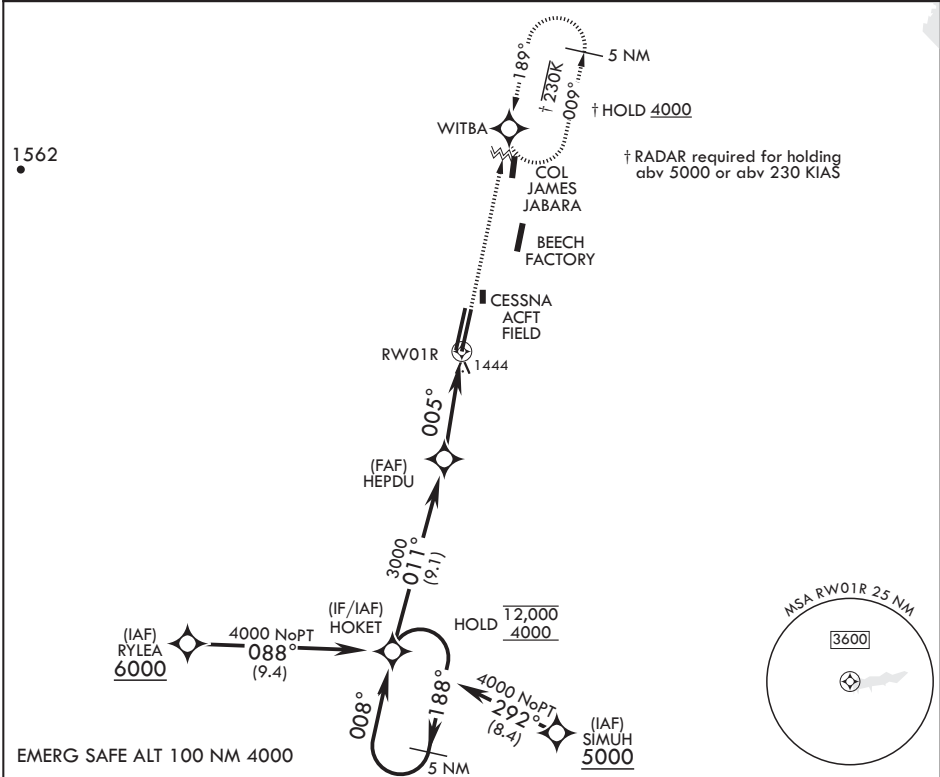
DME/DME RNP-0.3 NA

▼ \* When ALS inop, increase CAT AB RVR to 55, vis to 1 mile; CAT CDE RVR to 60, vis to 1 1/8 miles.  
\*\* Circling not authorized west of Rwy 1L-19R.

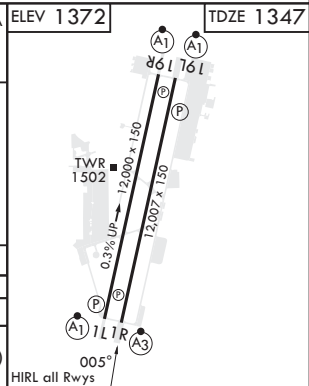


MISSED APPROACH: Climbing right turn to 4000 direct WITBA and hold.

D-ATIS 124.65 269.9	WICHITA APP CON 134.8 269.1	TOWER 127.25 291.775	GND CON 118.0 275.8
------------------------	--------------------------------	-------------------------	------------------------



5 NM Holding Pattern	4000	WITBA	ELEV 1372	TDZE 1347	
4000	188°	HOKET	011°	HEPDU	
3000	008°	005°	1.1 NM to RW01R	RW01R	
3.02°	TCH 64	0.3° UP	12,000 x 1.50	12,000 x 1.50	
CATEGORY	A	B	C	D	E
LNVA MDA*	1740/40		393	(400-3/4)	
☐ CIRCLING**	1900-1 528 (600-1)		1900-1½ 528 (600-1½)	2400-3 1028 (1100-3)	



NC-2, 22 FEB 2024 to 21 MAR 2024

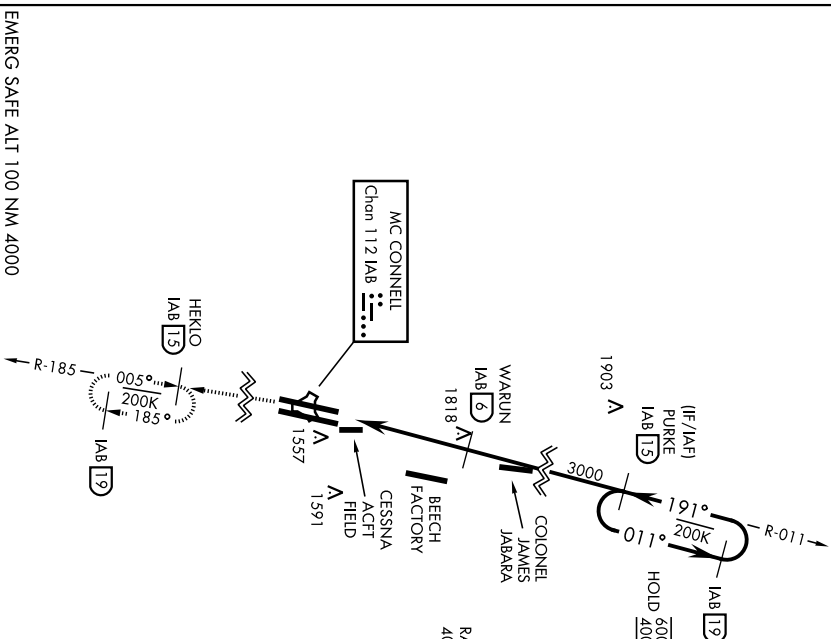
NC-2, 22 FEB 2024 to 21 MAR 2024

# RNAV (GPS) RWY 1R

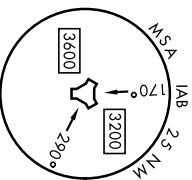
# TACAN RWY 19L

MC CONNELL AFB (KIAB)

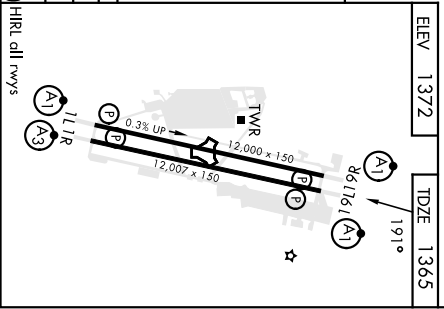
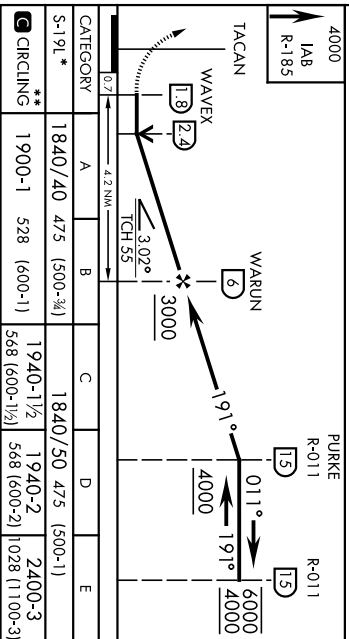
TACAN IAB Chon <b>112</b>	APCH CRS <b>191°</b>	Req'd Idg TDZE Appl Elev <b>1365</b> <b>1372</b>	[USAF]	ALSF-1 <b>A1</b>	MISSED APPROACH: Climb to 4000 via IAB TACAN R-185 to 1.5 DME (HERKIO) and hold as published. Expect further clearance from ATC.
* When ALS Inop, increase CAT AB RVR to 55 and vis to 1 mile, CAT CDE vis to 1 3/8 miles. ** Circling not authorized W of Rwy 1L-19R.				TOWER	
D-ATIS	WICHITA APP CON	<b>134.8 269.1</b>	<b>127.25 291.775</b>	GND CON	<b>118.0 275.8</b>
<b>124.65 269.9</b>					



RADAR required for holding above  
4000 or greater than 200 KIAS.



ELEV <b>1372</b>	TDZE <b>1365</b>
------------------	------------------



WICHITA, KANSAS  
Amdt 7 28DEC23

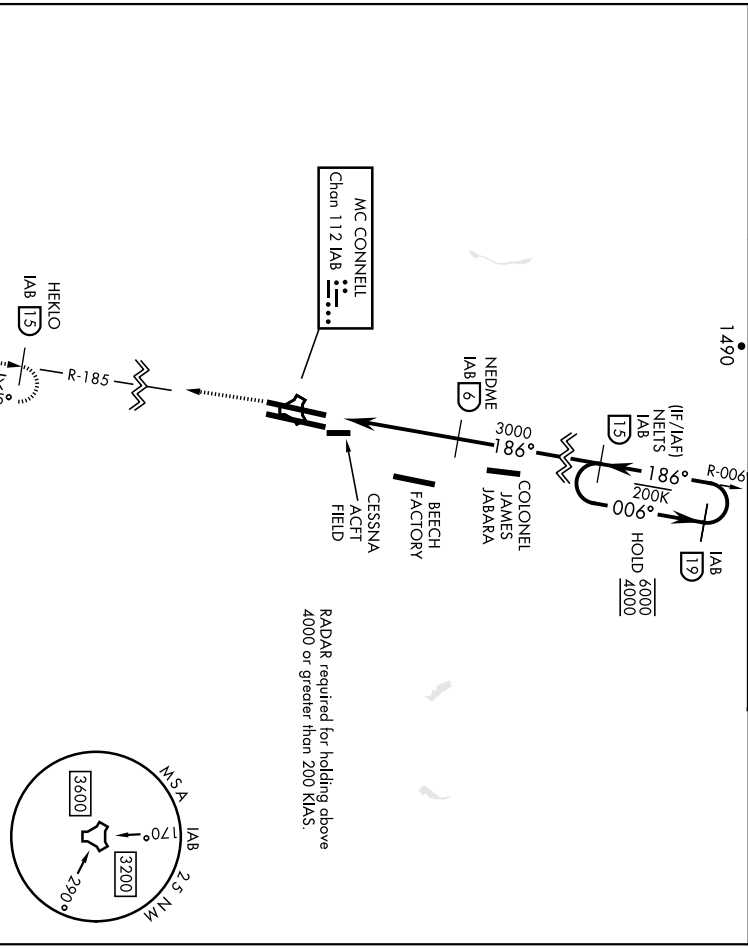
WICHITA, KANSAS  
MC CONNELL AFB (KIAB)  
TACAN RWY 19L

# TACAN RWY 19R

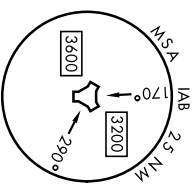
MC CONNELL AFB (KIAB)

[USAF]

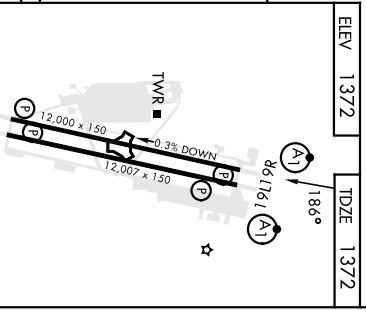
TACAN IAB Chan 112	APCH CRS 186°	Rwy Idg TDZE 12,000 1372	Appt Elev 1372		
<p>▼ * When A15 Inop, increase CAT AB RVR to 55 and vis to 1 mile, CAT CDE vis to 1 3/8 miles.          ** Circling not authorized W of Rwy 1L-19R.</p>				<p>ALSF-1 Tower          MISSED APPROACH: Climb to 4000 via IAB TACAN R-185 to 15 DME (HEKIO) and hold as published. Expect further clearance from ATC.</p>	
D-ATIS	WICHITA APP CON	TOWER	GND CON		
124.05 269.9	134.8 269.1	127.25 291.775	118.0 275.8		



RADAR required for holding above 4000 or greater than 200 KIAS.



EMERG SAFE ALT 100 NM 4000					
4000 IAB R-185	HEKIO IAB 15	NELTS R-006 15	R-006 19		
TACAN	JUDEL 23	NEDME 6	006°	186°	6000
	186°	186°	4000	3000	
	0.7	4.2 NM	3.01°	TCH 55	
CATEGORY	A	B	C	D	E
S-19R *	1880/24 508 (600-1/2)	1880/55 508 (600-1)	1940-1 1/2 568 (600-2)	1940-2 568 (600-2)	2400-3 1028 (600-3)
** CIRCLING	1900-1 528 (600-1)				



# TACAN RWY 19R

MC CONNELL AFB (KIAB)



WICHITA, KANSAS

# TACAN RWY 1L

TACAN IAB Chan 112	APCH CRS 011°	Rwy Idg TDZE Arprt Elev	12,000 1347 1372
-----------------------	------------------	-------------------------------	------------------------

-(USAF)

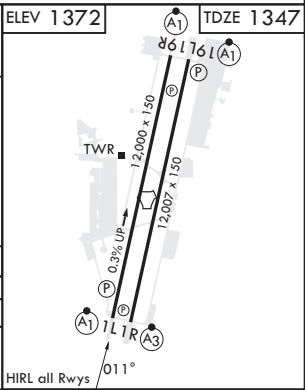
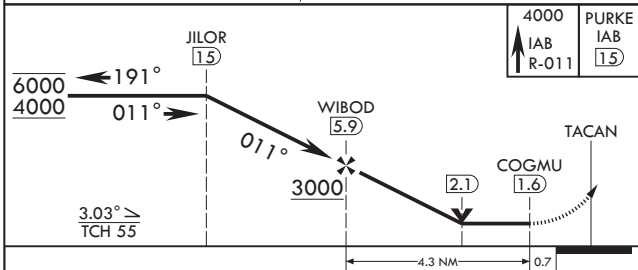
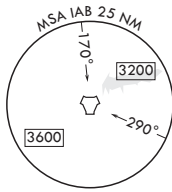
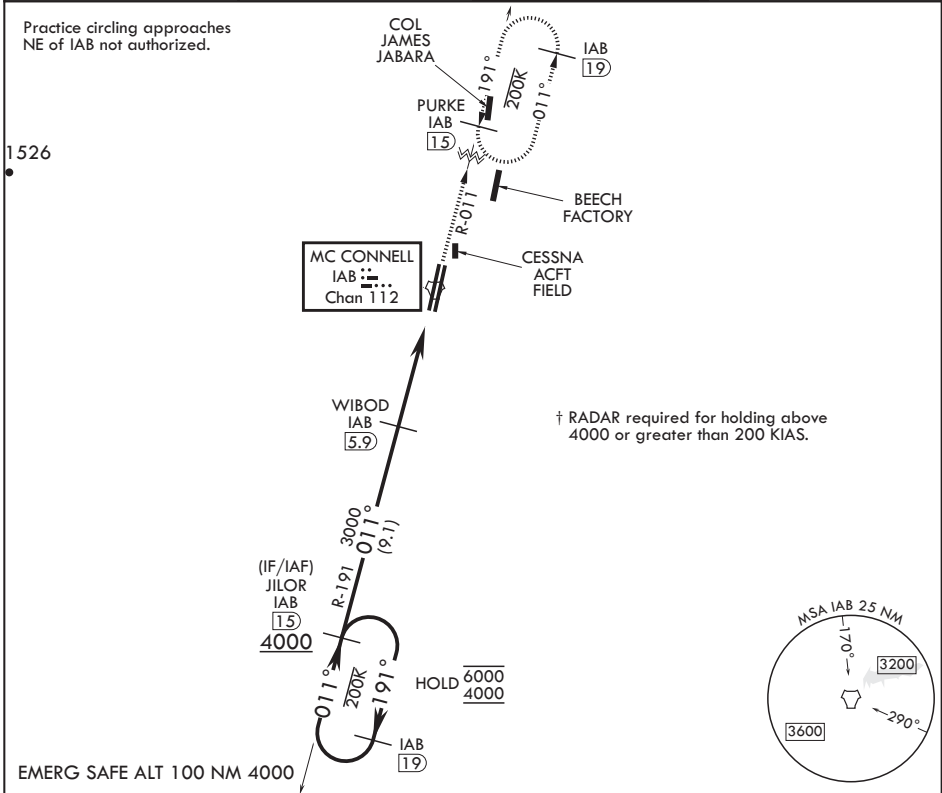
MC CONNELL AFB (KIAB)

▼ \*When ALS inop, increase CAT AB RVR to 55 and vis to 1 mile, CAT CDE vis to 1 1/4 miles.  
\*\* Circling not authorized W of Rwy 1L-19R.



MISSED APPROACH: Climb to 4000 via IAB TACAN R-011 to 15 DME (PURKE) and hold as published. Expect further clearance from ATC.

D-ATIS 124.65 269.9	WICHITA APP CON 134.8 269.1	TOWER 127.25 291.775	GND CON 118.0 275.8
------------------------	--------------------------------	-------------------------	------------------------



CATEGORY	A	B	C	D	E
S-1L*	1780/24 433 (500-½)		1780/40 433 (500-¾)		
☐ CIRCLING**	1900-1 528 (600-1)		1940-1½ 568 (600-1½)	1940-2 568 (600-2)	2400-3 1028 (1100-3)

WICHITA, KANSAS  
Amdt 6 28DEC23

37°37'N - 97°16'W

MC CONNELL AFB (KIAB)  
**TACAN RWY 1L**

NC-2, 22 FEB 2024 to 21 MAR 2024

NC-2, 22 FEB 2024 to 21 MAR 2024

WICHITA, KANSAS

# TACAN RWY 1R

TACAN IAB Chan 112	APCH CRS 005°	Rwy Idg TDZE Arprt Elev	12,007 1347 1372
-----------------------	------------------	-------------------------------	------------------------

-(USAF)

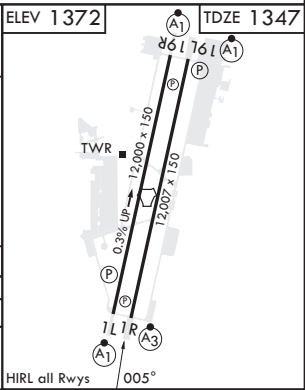
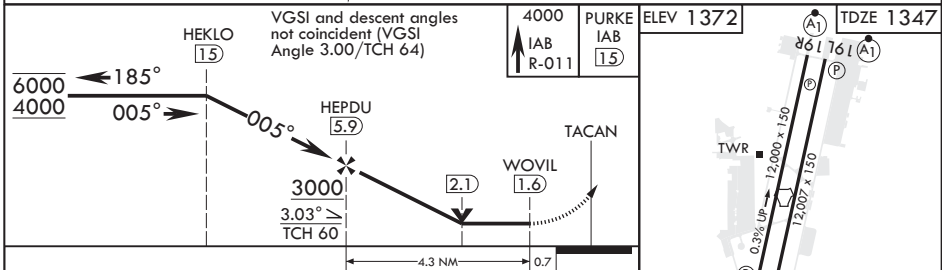
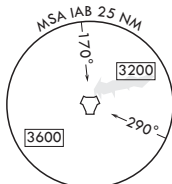
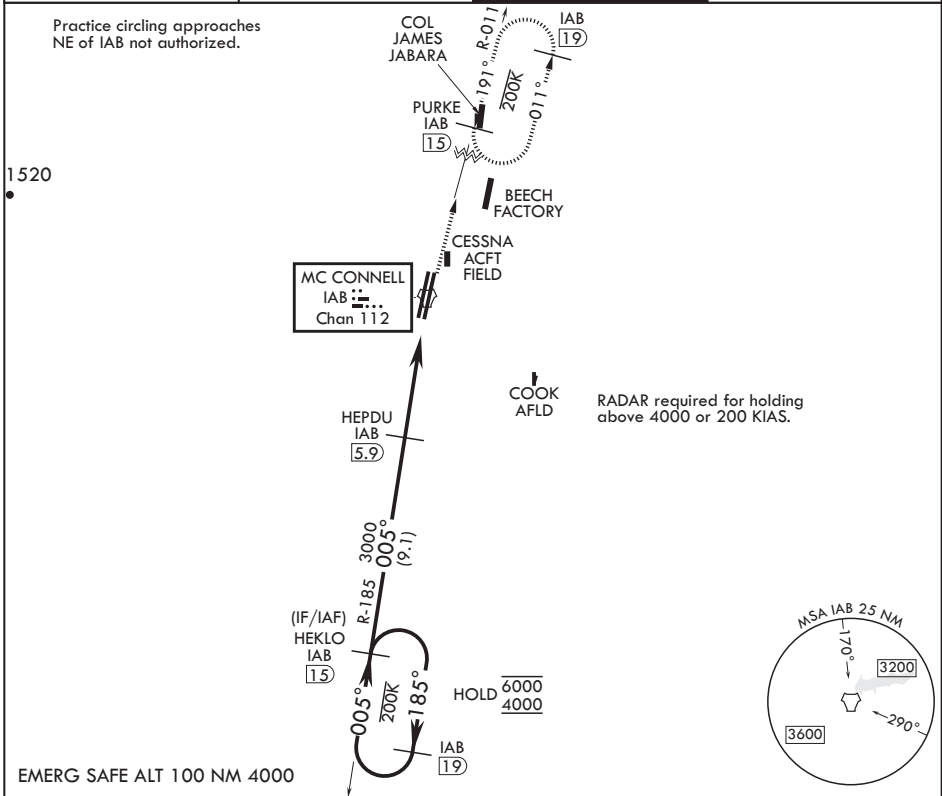
MC CONNELL AFB (KIAB)

⚠ \*When ALS inop, increase CAT AB RVR to 55 and vis to 1 mile, CAT CDE vis to 1 1/4 miles.  
\*\* Circling not authorized W of Rwy 1L-19R.



SSALR MISSED APPROACH: Climb to 4000 via IAB TACAN R-011 to 15 DME (PURKE) and hold as published. Expect further clearance from ATC.

D-ATIS 124.65 269.9	WICHITA APP CON 134.8 269.1	TOWER 127.25 291.775	GND CON 118.0 275.8
------------------------	--------------------------------	-------------------------	------------------------



CATEGORY	A	B	C	D	E
S-1R*	1780/40		433	(500-3/4)	
CIRCLING**	1900-1 528 (600-1)		1940-1½ 568 (600-1½)	1940-2 568 (600-2)	2400-3 1028 (1100-3)

WICHITA, KANSAS  
Amdt 7 28DEC23

37°37'N - 97°16'W

MC CONNELL AFB (KIAB)

# TACAN RWY 1R

NC-2, 22 FEB 2024 to 21 MAR 2024

NC-2, 22 FEB 2024 to 21 MAR 2024