

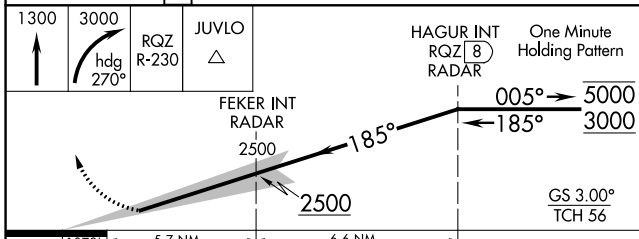
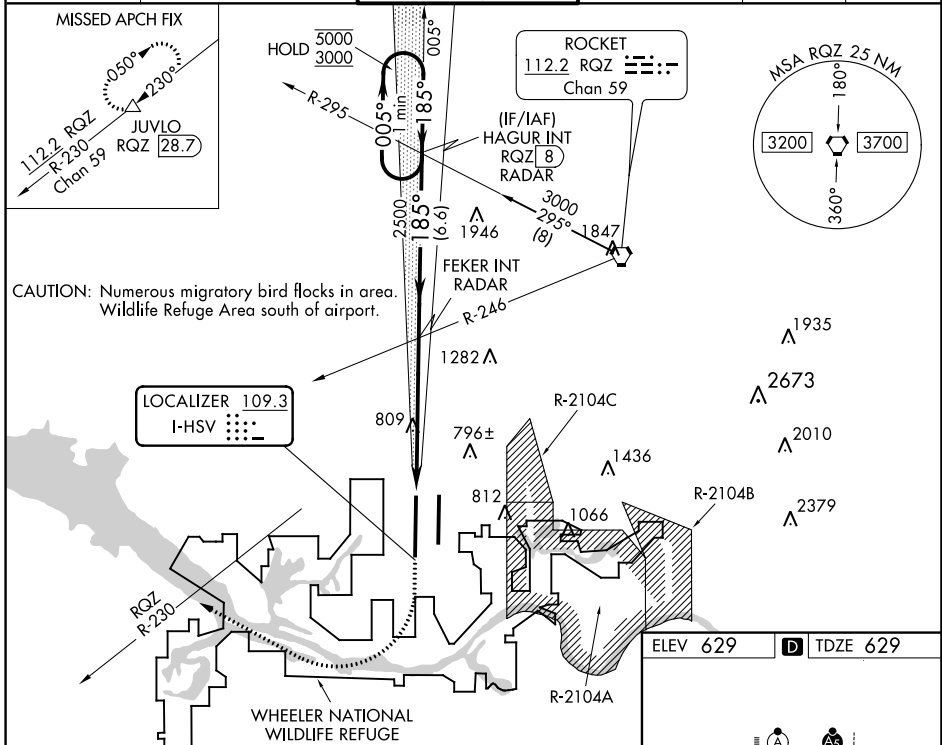
LOC I-HSV 109.3	APP CRS 185°	Rwy Idg 12600 TDZE 629 Apt Elev 629
---------------------------	------------------------	--

ILS RWY 18R (CAT II)

HUNTSVILLE INTL-CARL T JONES FLD (HSV)

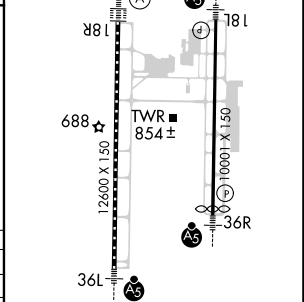
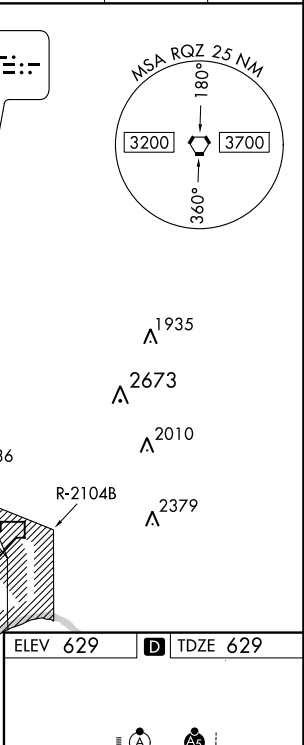
DME required. RADAR required for procedure entry.		ALSIF-2	MISSED APPROACH: Climb to 1300 then climbing right turn to 3000 on heading 270° and RQZ R-230 to JUVLO/RQZ 28.7 DME and hold.	

ATIS 121.25	HUNTSVILLE APP CON * 125.6 354.1	HUNTSVILLE TOWER * 127.6 (CTAF) 0 350.35	GND CON 121.9 269.525	CLNC DEL 120.35	UNICOM 122.95
-----------------------	--	--	---------------------------------	---------------------------	-------------------------



CATEGORY	A	B	C	D
S-ILS 18R	RA 105/12 100 DA 729			

CATEGORY II ILS - SPECIAL AIRCREW & AIRCRAFT CERTIFICATION REQUIRED



TDZ/CL Rwys 18R and 36L
HIRL Rwys 18L-36R and 18R-36L

SE-4, 22 FEB 2024 to 21 MAR 2024


SE-4, 22 FEB 2024 to 21 MAR 2024

ILS or LOC RWY 18L

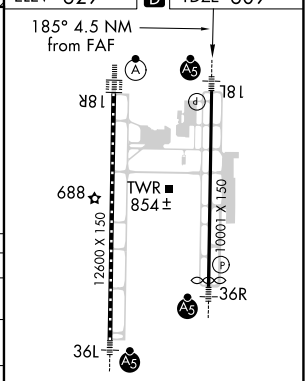
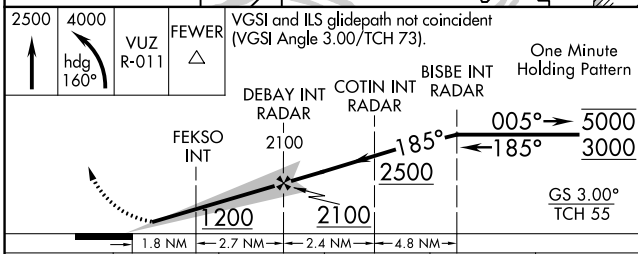
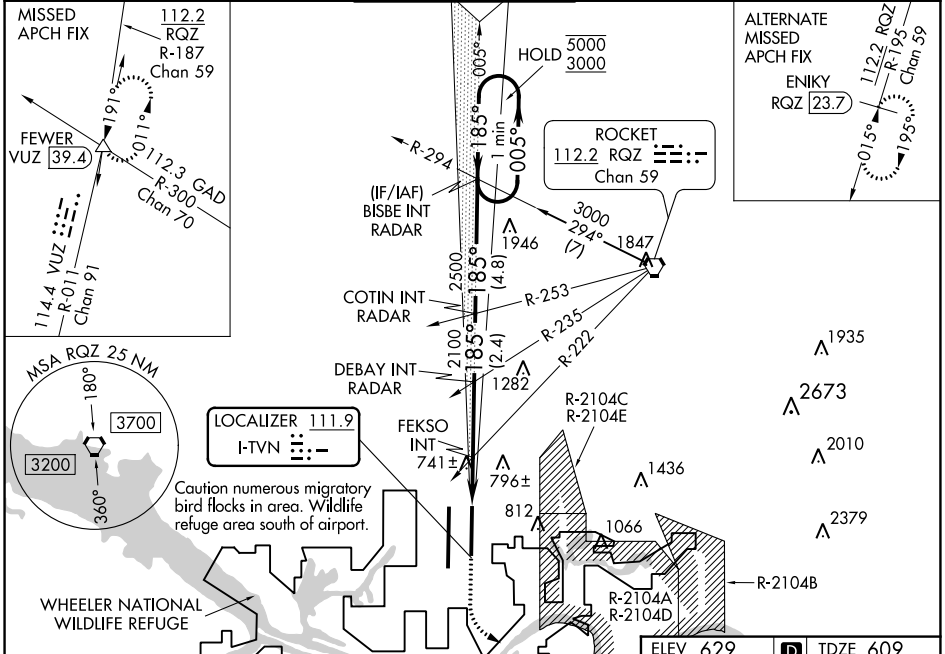
HUNTSVILLE INTL-CARL T JONES FLD (HSV)

LOC I-TVN 111.9	APP CRS 185°	Rwy Idg 9801
		TDZE 609
		Apt Elev 629

Simultaneous approach authorized. Circling NA for Cat C/D/E east of Rwy 18L-36R. For inop ALS, increase S-ILS 18L Cat E visibility to RVR 4000 and S-LOC 18L Cat E visibility to 1 1/4 SM; FEKSO Fix minimums increase S-LOC 18L Cat E visibility to RVR 6000.
 * RVR 1800 authorized with use of FD or AP or HUD to DA.

MALSR

MISSED APPROACH: Climb to 2500 then climbing left turn to 4000 on heading 160° and VUZ R-011 to FEWER INT/VUZ 39.4 DME and hold.

ATIS 121.25	HUNTSVILLE APP CON * 125.6 354.1	HUNTSVILLE TOWER * 127.6 (CTAF) 0 350.35	GND CON 121.9 269.525	CLNC DEL 120.35	UNICOM 122.95
-----------------------	--	--	---------------------------------	---------------------------	-------------------------



CATEGORY	A	B	C	D	E
S-ILS 18L *	809/24 200 (200-1/2)				
S-LOC 18L	1200/24	591 (600-1/2)	1200-1 1/4	591 (600-1 1/4)	
C CIRCLING	1200-1	571 (600-1)	1200-1 3/4	1240-2	1260-2 1/4
FEKSO FIX MINIMUMS (DUAL VOR RECEIVERS REQUIRED)					
S-LOC 18L	1000/24	391 (400-1/2)	1000/35	391 (400-1/2)	
C CIRCLING	1160-1	531 (600-1)	1160-1 1/2	1240-2	1260-2 1/4
TDZ/CL Rwy 18R and 36L HIRL Rwy 18L-36R and 18R-36L 0 FAF to MAP 4.5 NM Knots 60 90 120 150 180 Min:Seq 4:30 3:00 2:15 1:48 1:30					

SE-4, 22 FEB 2024 to 21 MAR 2024

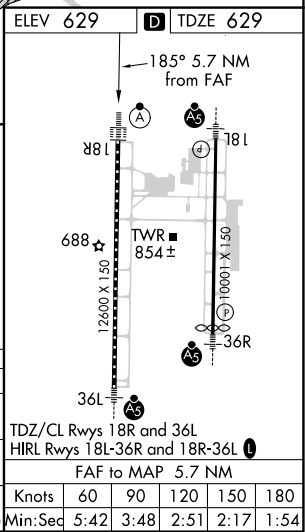
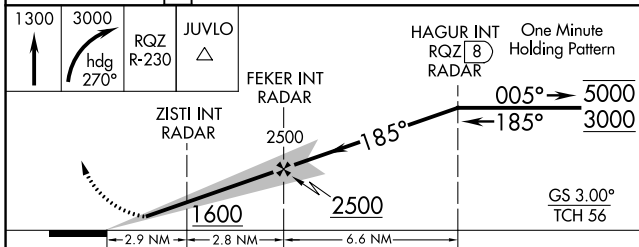
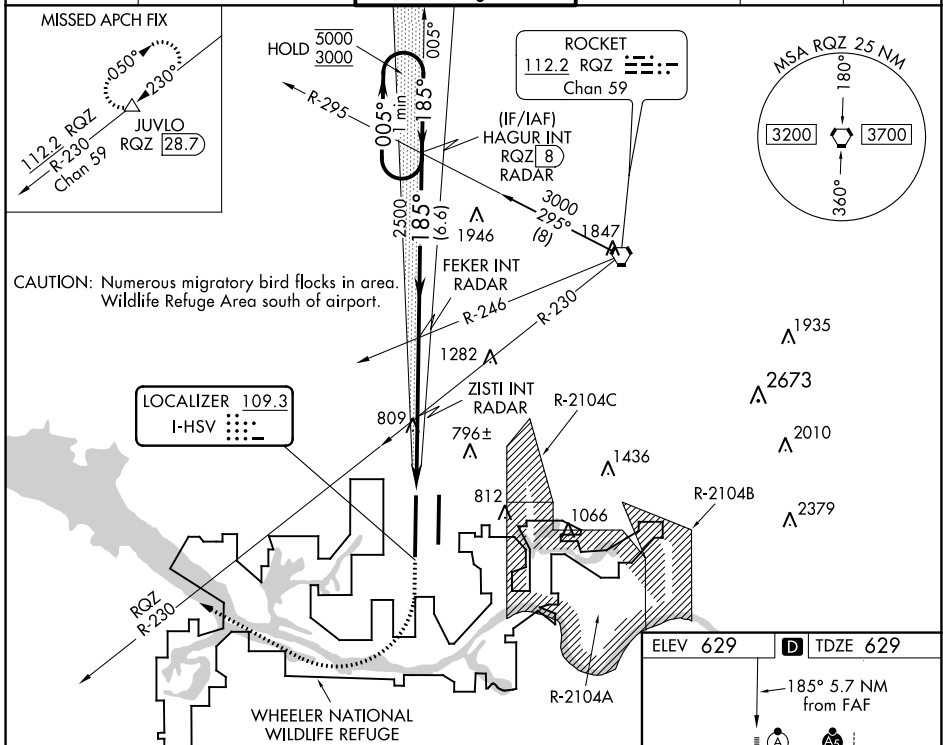
SE-4, 22 FEB 2024 to 21 MAR 2024

LOC I-HSV 109.3	APP CRS 185°	Rwy Idg 12600 TDZE 629 Apt Elev 629
---------------------------	------------------------	--

ILS or LOC RWY 18R

HUNTSVILLE INTL-CARL T JONES FLD (HSV)

DME required. RADAR required for procedure entry.		ALSF-2 	MISSED APPROACH: Climb to 1300 then climbing right turn to 3000 on heading 270° and RQZ R-230 to JUVLO/RQZ 28.7 DME and hold.		
ATIS 121.25	HUNTSVILLE APP CON * 125.6 354.1	HUNTSVILLE TOWER * 127.6 (CTAF) 0 350.35	GND CON 121.9 269.525	CLNC DEL 120.35	UNICOM 122.95



CATEGORY	A	B	C	D	E
S-ILS 18R	829/18 200 (200-½)				
S-LOC 18R	1060/24	431 (500-½)	1060/40	431 (500-¾)	
CIRCLING	1160-1 531 (600-1)	1160-1½ 531 (600-1½)	1240-2 611 (700-2)	1260-2¼ 631 (700-2¼)	

TDZ/CL Rws 18R and 36L	HRL Rws 18L-36R and 18R-36L				
FAF to MAP 5.7 NM					
Knots	60	90	120	150	180
Min:Sec	5:42	3:48	2:51	2:17	1:54

SE-4, 22 FEB 2024 to 21 MAR 2024

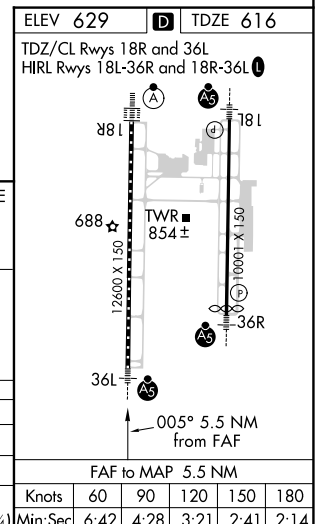
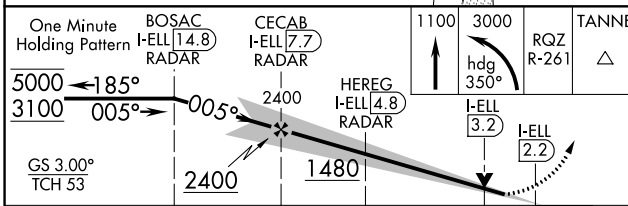
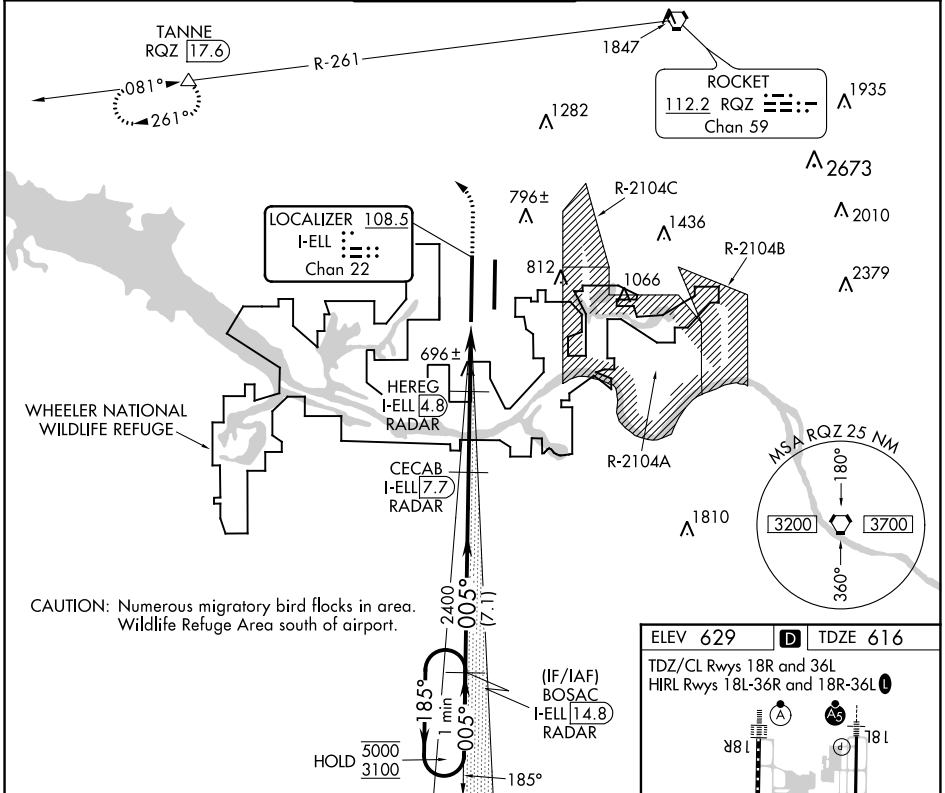
SE-4, 22 FEB 2024 to 21 MAR 2024

LOC/DME I-ELL 108.5 Chan 22	APP CRS 005°	Rwy Idg 12600 TDZE 616 Apt Elev 629
---	------------------------	--

ILS or LOC RWY 36L

HUNTSVILLE INTL-CARL T JONES FLD (HSV)

DME required. RADAR required for procedure entry.		MALSR 	MISSED APPROACH: Climb to 1100 then climbing left turn to 3000 on heading 350° and RQZ R-261 to TANNE/RQZ 17.6 DME and hold.		
ATIS 121.25	HUNTSVILLE APP CON * 125.6 354.1	HUNTSVILLE TOWER * 127.6 (CTAF) 0 350.35	GND CON 121.9 269.525	CLNC DEL 120.35	UNICOM 122.95



CATEGORY	A	B	C	D	E	FAF to MAP 5.5 NM					
S-ILS 36L	816/18 200 (200-½)					Knots	60	90	120	150	180
S-LOC 36L	960/24	344 (400-½)	960/30	344 (400-¾)		Min:Sec	6:42	4:28	3:21	2:41	2:14
C CIRCLING	1160-1	531 (600-1)	1160-1½	1240-2	1260-2¼						
	531 (600-½)		611 (700-2)		631 (700-2¼)						

SE-4, 22 FEB 2024 to 21 MAR 2024

SE-4, 22 FEB 2024 to 21 MAR 2024

LOC/DME I-JJC 109.55 Chan 32 (Y)	APP CRS 005°	Rwy Idg 9801 TDZE 595 Apt Elev 629
---	------------------------	---

ILS or LOC RWY 36R

HUNTSVILLE INTL-CARL T JONES FLD (HSV)

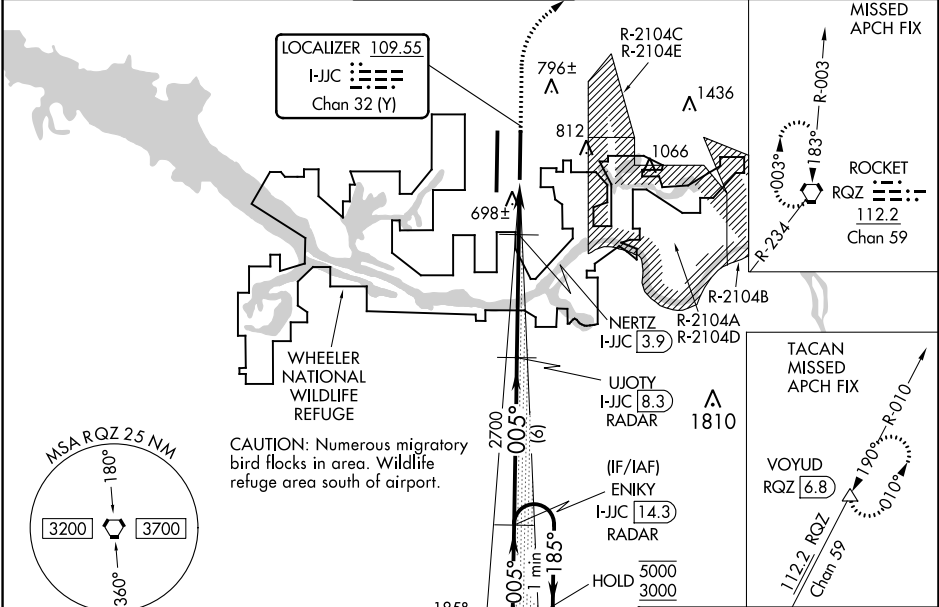
RADAR required for procedure entry. DME or RADAR required.

ASR Simultaneous approach authorized. For inop ALS, increase S-ILS 36R Cat E visibility to RVR 4000 and S-LOC 36R Cat C/D/E visibility to 1½ SM; NERTZ Fix minimums: increase S-LOC 36R Cat E visibility to RVR 6000. Circling NA for Cat C/D/E east of Rwy 18L-36R.

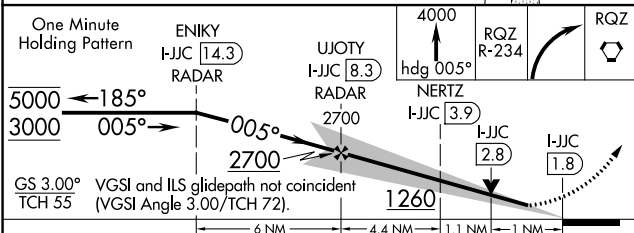


MISSED APPROACH: Climb to 4000 on heading 005° to intercept RQZ R-234 and right turn to RQZ VORTAC and hold, continue climb-in-hold to 4000. (TACAN aircraft continue climb to 5000 on RQZ VORTAC R-010 to VOYUD/RQZ 6.8 DME and hold north, left turn, 190° inbound, continue climb-in-hold to 5000).

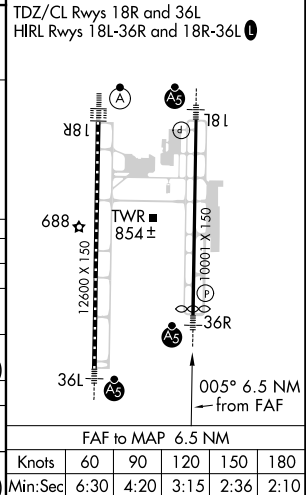
ATIS 121.25	HUNTSVILLE APP CON ★ 125.6 354.1	HUNTSVILLE TOWER ★ 127.6 (CTAF) 350.35	GND CON 121.9 269.525	CLNC DEL 120.35	UNICOM 122.95
-----------------------	--	--	---------------------------------	---------------------------	-------------------------



ELEV 629 TDZE 595



TDZ/CL Rws 18R and 36L
HIRL Rws 18L-36R and 18R-36L



CATEGORY	A	B	C	D	E
S-ILS 36R	818/24 223 (200-½)				
S-LOC 36R	1260/24	665 (700-½)	1260-1½		665 (700-1½)
C CIRCLING	1260-1	631 (700-1)	1260-1⅞	1260-2	1260-2¼
			631 (700-1⅞)	631 (700-2)	631 (700-2¼)
NERTZ FIX MINIMUMS					
S-LOC 36R	980/24	385 (400-½)	980/35		385 (400-⅝)
C CIRCLING	1160-1	531 (600-1)	1160-1½	1240-2	1260-2¼
			531 (600-½)	611 (700-2)	631 (700-2¼)

SE-4, 22 FEB 2024 to 21 MAR 2024

SE-4, 22 FEB 2024 to 21 MAR 2024

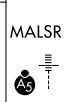
WAAS CH 72906 W18A	APP CRS 185°	Rwy Idg TDZE 609 Apt Elev 629	9801
--	------------------------	---	-------------

RNAV (GPS) RWY 18L

HUNTSVILLE INTL-CARL T JONES FLD (HSV)

RNP APCH - GPS

ASR For uncompensated Baro-VNAV systems, LNAV/VNAV NA below -9°C or above 54°C. Circling NA for Cats C/D/E east of Rwy 18L-36R. For inop ALS, increase LPV Cat E visibility to RVR 4000, LNAV/VNAV Cat E visibility to 1½ SM, and LNAV Cat E visibility to 1¼ SM. Simultaneous approach authorized. LNAV procedure NA during simultaneous operations. Use of FD or AP required during simultaneous operations. * RVR 1800 authorized with use of FD or AP or HUD to DA.

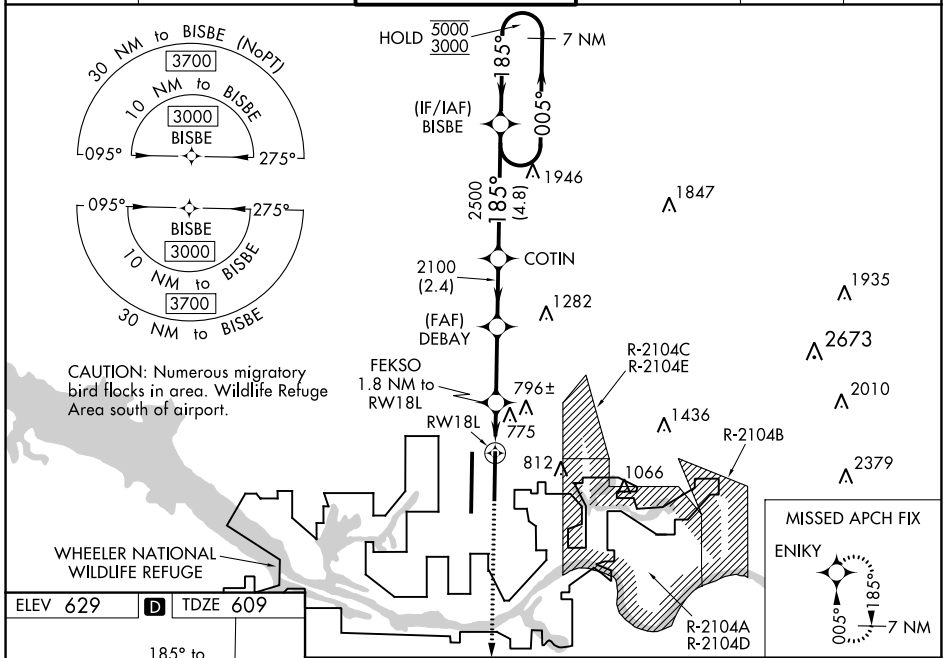


MISSED APPROACH:
Climb to 3000 direct ENIKY and hold.

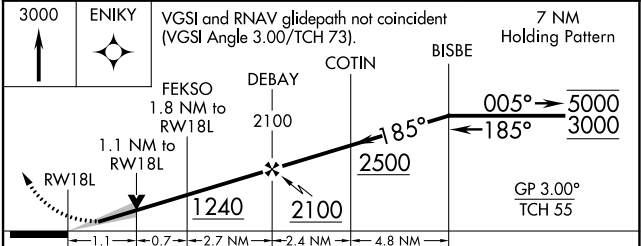
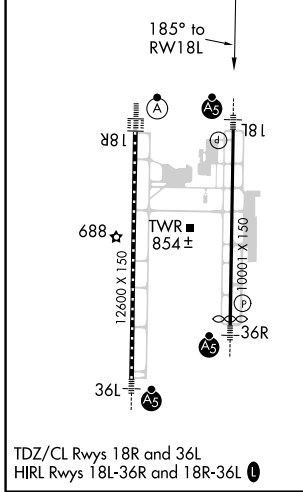
ATIS 121.25	HUNTSVILLE APP CON * 125.6 354.1	HUNTSVILLE TOWER * 127.6 (CTAF) 350.35	GND CON 121.9 269.525	CLNC DEL 120.35	UNICOM 122.95
-----------------------	--	--	---------------------------------	---------------------------	-------------------------

SE-4, 22 FEB 2024 to 21 MAR 2024

SE-4, 22 FEB 2024 to 21 MAR 2024



ELEV 629	D	TDZE 609
-----------------	----------	-----------------



CATEGORY	A	B	C	D	E
LPV DA*	809/24		200 (200-½)		
LNAV/VNAV DA	1057/45		448 (500-¾)		
LNAV MDA	1040/24 431 (500-½)		1040/40 431 (500-¾)		
C CIRCLING	1160-1 531 (600-1)		1160-1½ 531 (600-1½)	1240-2 611 (700-2)	1260-2¼ 631 (700-2¼)

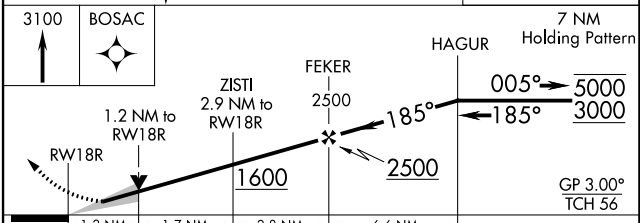
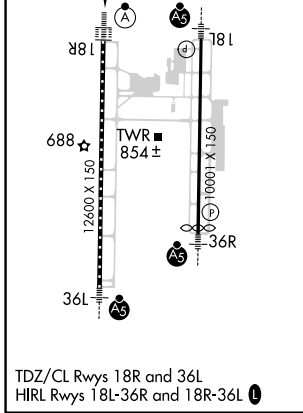
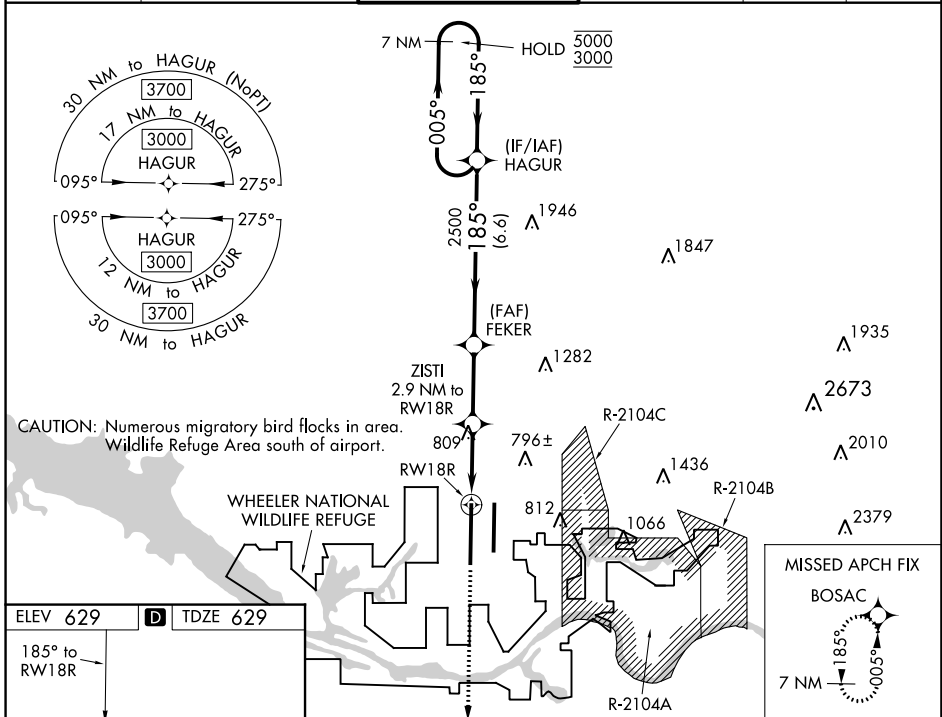
WAAS CH 58206 W18B	APP CRS 185°	Rwy Idg 12600 TDZE 629 Apt Elev 629
--	------------------------	--

RNAV (GPS) RWY 18R

HUNTSVILLE INTL-CARL T JONES FLD (HSV)

RNP APCH-GPS.		ALSIF-2	MISSED APPROACH: Climb to 3100 direct BOSAC and hold.
<p>⚠ Circling NA for Cats C/D/E east of Rwy 18L-36R. Simultaneous approach authorized. LNAV procedure NA during simultaneous operations. Use of FD or AP required during simultaneous operations. For uncompensated Baro-VNAV systems, LNAV/VNAV NA below -8 °C or above 54°C. For inop ALS, increase LPV Cat E visibility to RVR 4000, LNAV/VNAV Cat E visibility to RVR 5000, and LNAV Cat E visibility to 1¼ SM.</p>			

ATIS 121.25	HUNTSVILLE APP CON * 125.6 354.1	HUNTSVILLE TOWER * 127.6 (CTAF) 0 350.35	GND CON 121.9 269.525	CLNC DEL 120.35	UNICOM 122.95
-----------------------	--	--	---------------------------------	---------------------------	-------------------------



CATEGORY	A	B	C	D	E
LPV DA		829/18	200 (200-½)		
LNAV/VNAV DA		954/26	325 (400-½)		
LNAV MDA	1060/24	431 (500-½)	1060/40	431 (500-¾)	
C CIRCLING	1160-1	531 (600-1)	1160-1½ 531 (600-1½)	1240-2 611 (700-2)	1260-2¼ 631 (700-2¼)

SE-4, 22 FEB 2024 to 21 MAR 2024

SE-4, 22 FEB 2024 to 21 MAR 2024


WAAS CH 82606 W36A	APP CRS 005°	Rwy Idg 12600 TDZE 616 Apt Elev 629
--	------------------------	--

RNAV (GPS) RWY 36L

HUNTSVILLE INTL-CARL T JONES FLD (HSV)

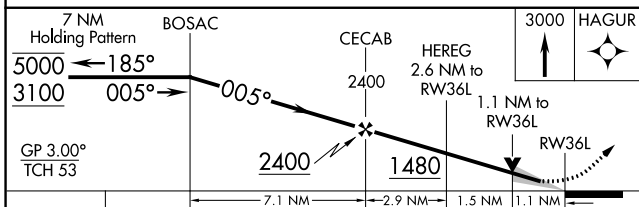
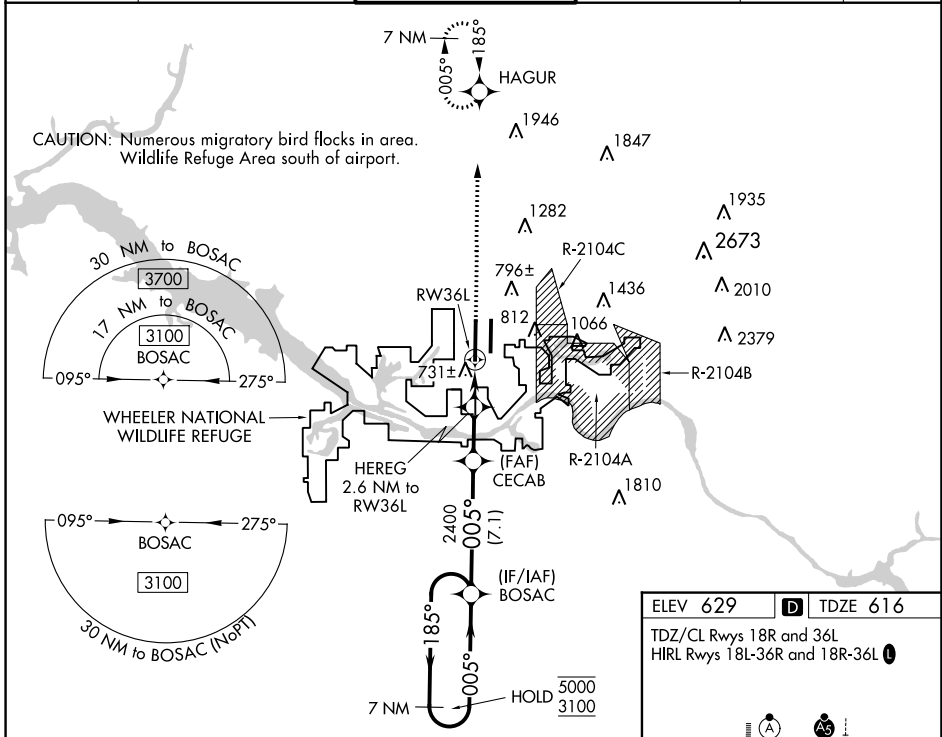
RNP APCH-GPS.

ASR Circling NA for Cats C/D/E east of Rwy 18L-36R. Simultaneous approach authorized. LNAV procedure NA during simultaneous operations. Use of FD or AP required during simultaneous operations. For uncompensated Baro-VNAV systems, LNAV/VNAV NA below -8°C or above 54°C. For inop ALS, increase LPV Cat E visibility to RVR 4000, LNAV/VNAV all Cats visibility to RVR 4500, and LNAV Cat E visibility to RVR 6000.

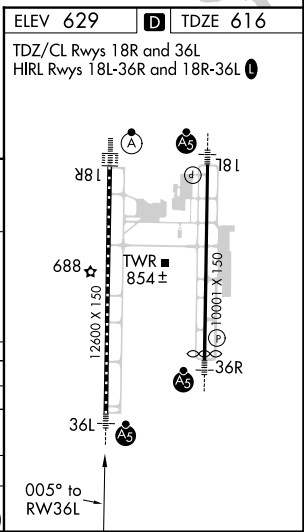
MALSR 

MISSED APPROACH: Climb to 3000 direct HAGUR and hold.

ATIS 121.25	HUNTSVILLE APP CON * 125.6 354.1	HUNTSVILLE TOWER * 127.6 (CTAF) 350.35	GND CON 121.9 269.525	CLNC DEL 120.35	UNICOM 122.95
-----------------------	--	--	---------------------------------	---------------------------	-------------------------



CATEGORY	A	B	C	D	E
LPV DA		816/18	200 (200-½)		
LNAV/VNAV DA		892/24	276 (300-½)		
LNAV MDA	1000/24	384 (400-½)	1000/35	384 (400-¾)	
CIRCLING	1160-1	531 (600-1)	1160-1½ 531 (600-1½)	1240-2 611 (700-2)	1260-2¼ 631 (700-2¼)



SE-4, 22 FEB 2024 to 21 MAR 2024

SE-4, 22 FEB 2024 to 21 MAR 2024

WAAS CH 86606 W36B	APP CRS 005°	Rwy Idg TDZE Apt Elev	9801 595 629
--	------------------------	-----------------------------	---

RNAV (GPS) RWY 36R

HUNTSVILLE INTL-CARL T JONES FLD (HSV)

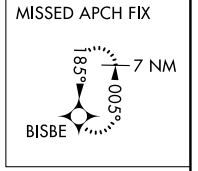
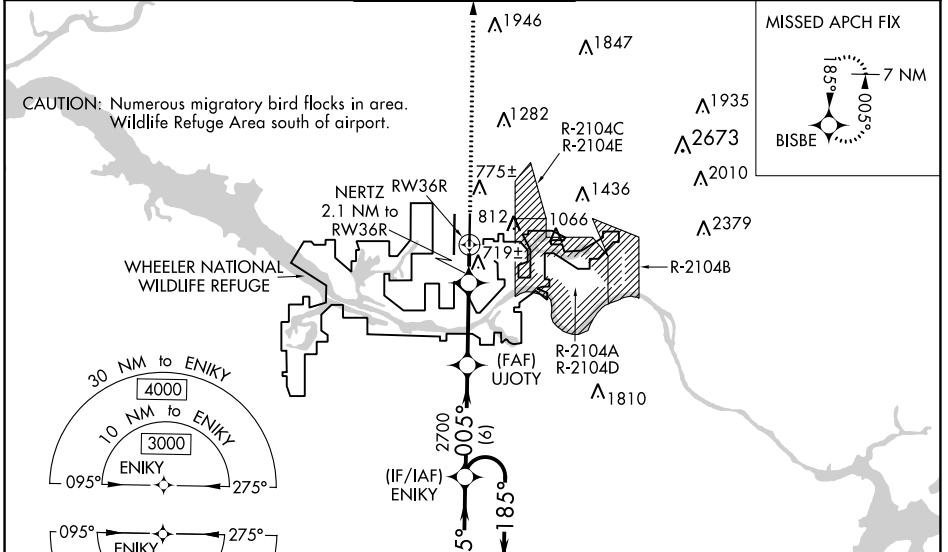
RNP APCH - GPS.

ASR Circling NA for Cats C/D/E east of Rwy 18L-36R. For uncompensated Baro-VNAV systems, LNAV/VNAV NA below -9°C or above 54°C. Simultaneous approach authorized. LNAV procedure NA during simultaneous operations. Use of FD or AP required during simultaneous operations. For inop ALS increase LPV Cat E visibility to RVR 4000, LNAV/VNAV Cat E visibility to RVR 5000 and LNAV Cat E visibility to RVR 6000.

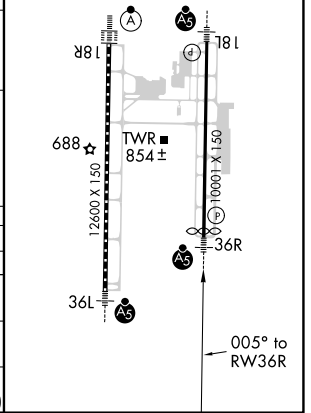
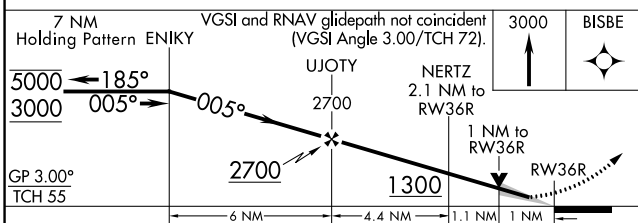
MALSRL

MISSED APPROACH: Climb to 3000 direct BISBE and hold.

ATIS 121.25	HUNTSVILLE APP CON * 125.6 354.1	HUNTSVILLE TOWER * 127.6 (CTAF) 0 350.35	GND CON 121.9 269.525	CLNC DEL 120.35	UNICOM 122.95
-----------------------	--	--	---------------------------------	---------------------------	-------------------------



ELEV 629	D TDZE 595
TDZ/CL Rws 18R and 36L HIRL Rws 18L-36R and 18R-36L	



CATEGORY	A	B	C	D	E
LPV DA		818/24	223 (200-1/2)		
LNAV/DA		939/30	344 (400-5/8)		
LNAV MDA	980/24	385 (400-1/2)	980/35	385 (400-5/8)	
C CIRCLING	1160-1	531 (600-1)	1160-1 1/2 531 (600-1 1/2)	1240-2 611 (700-2)	1260-2 1/4 631 (700-2 1/4)

SE-4, 22 FEB 2024 to 21 MAR 2024

SE-4, 22 FEB 2024 to 21 MAR 2024