

LOC I-HSP 108.7	APP CRS 247°	Rwy Idg 5600 TDZE 3773 Apt Elev 3793
---------------------------	------------------------	---

ILS or LOC RWY 25

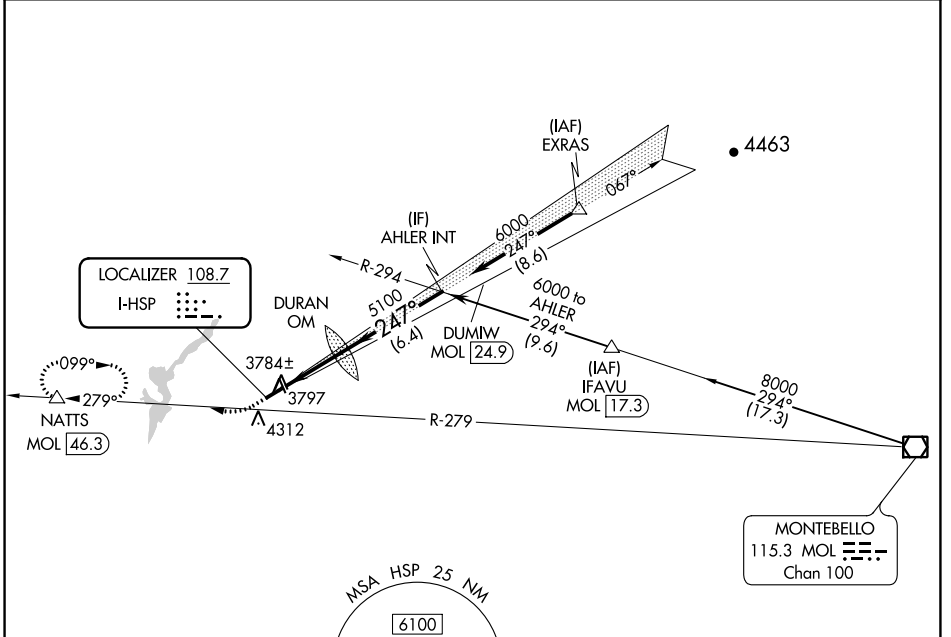
INGALLS FLD (HSP)

DME required.

▼ Circling to Rwy 7 NA at night.
▲ NA Circling NA southeast of Rwy 7-25.

MISSED APPROACH: Climb to 4360, then climbing right turn to 6200 on heading 270° and MOL R-279 to NATTS/MOL 46.3 DME and hold. (DME required).

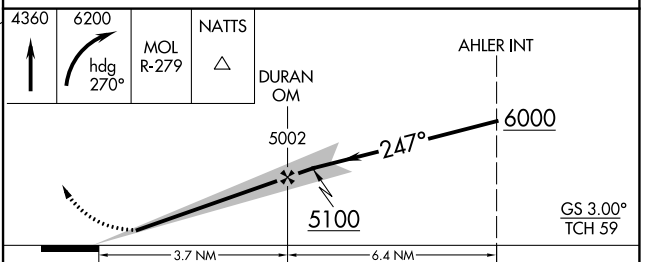
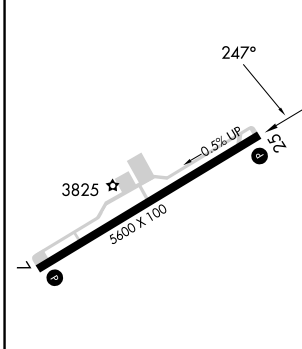
AWOS-3 118.8	WASHINGTON CENTER 134.4 353.9	UNICOM 123.0 (CTAF) 0
------------------------	---	---------------------------------



NE-3, 22 FEB 2024 to 21 MAR 2024

NE-3, 22 FEB 2024 to 21 MAR 2024

ELEV 3793	TDZE 3773
-----------	-----------



CATEGORY	A	B	C	D
S-ILS 25	4073- ⁷ / ₈ 300 (300- ⁷ / ₈)			
S-LOC 25	4240-1	467 (500-1)	4240-1 ³ / ₈	467 (500-1 ³ / ₈)
<input checked="" type="checkbox"/> CIRCLING	4440-1 647 (700-1)	4480-1 687 (700-1)	4480-2 687 (700-2)	4480-2 ¹ / ₄ 687 (700-2 ¹ / ₄)

REIL Rwy 25 **0**
HIRL Rwy 7-25 **0**

FAF to MAP 3.7 NM

Knots	60	90	120	150	180
Min:Sec	3:42	2:28	1:51	1:29	1:14

WAAS CH 53713 W25A	APP CRS 247°	Rwy Idg TDZE Apt Elev	5600 3773 3793
--	------------------------	-----------------------------	---

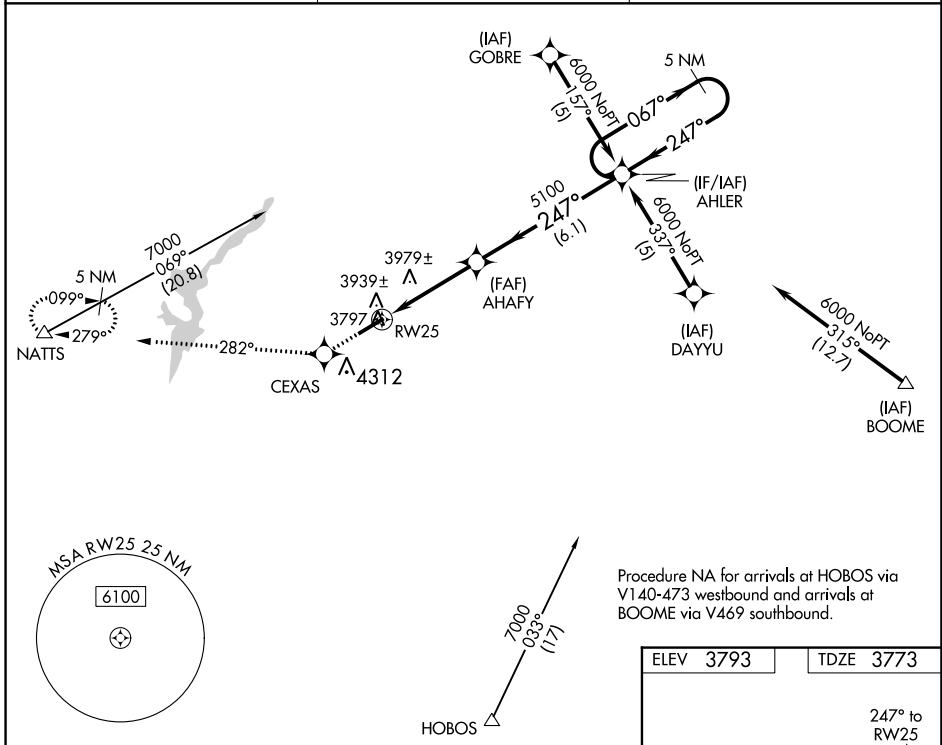
RNAV (GPS) RWY 25

INGALLS FLD (HSP)

▼ Circling NA SE of Rwy 7-25. Baro-VNAV NA.
▲ DME/DME RNP-0.3 NA.
 When local altimeter setting not received, procedure NA.

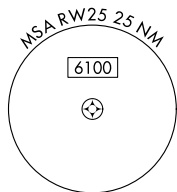
MISSED APPROACH: Climb to 6000 direct CEXAS and via track 282° to NATTS and hold.

AWOS-3 118.8	WASHINGTON CENTER 134.4 353.9	UNICOM 123.0 (CTAF) 0
------------------------	---	---------------------------------

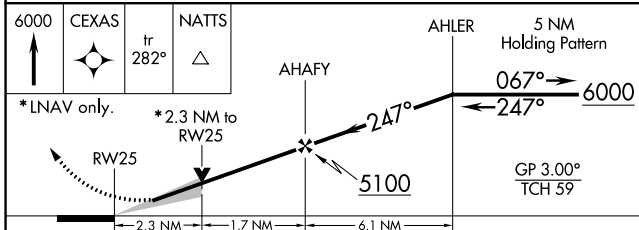


NE-3, 22 FEB 2024 to 21 MAR 2024

NE-3, 22 FEB 2024 to 21 MAR 2024



Procedure NA for arrivals at HOBOS via V140-473 westbound and arrivals at BOOME via V469 southbound.



ELEV 3793	TDZE 3773
-----------	-----------

3825 ☆
5600 X 100
0.5% UP
247° to RWY 25

REIL Rwy 25 0
HIRL Rwy 7-25 0

CATEGORY	A	B	C	D
LPV DA	4164-1¼ 391 (400-1¼)			
LNAV/VNAV DA	4309-2 536 (600-2)			
LNAV MDA	4560-1 787 (800-1)	4560-1¼ 787 (800-1¼)	4560-2¼ 787 (800-2¼)	4560-2½ 787 (800-2½)
C CIRCLING	4560-1 767 (800-1)	4560-1¼ 767 (800-1¼)	4560-2¼ 767 (800-2¼)	4560-2½ 767 (800-2½)

WAAS CH 86813 W07A	APP CRS 067°	Rwy Idg TDZE Apt Elev	5600 3793 3793
--	------------------------	-----------------------------	---

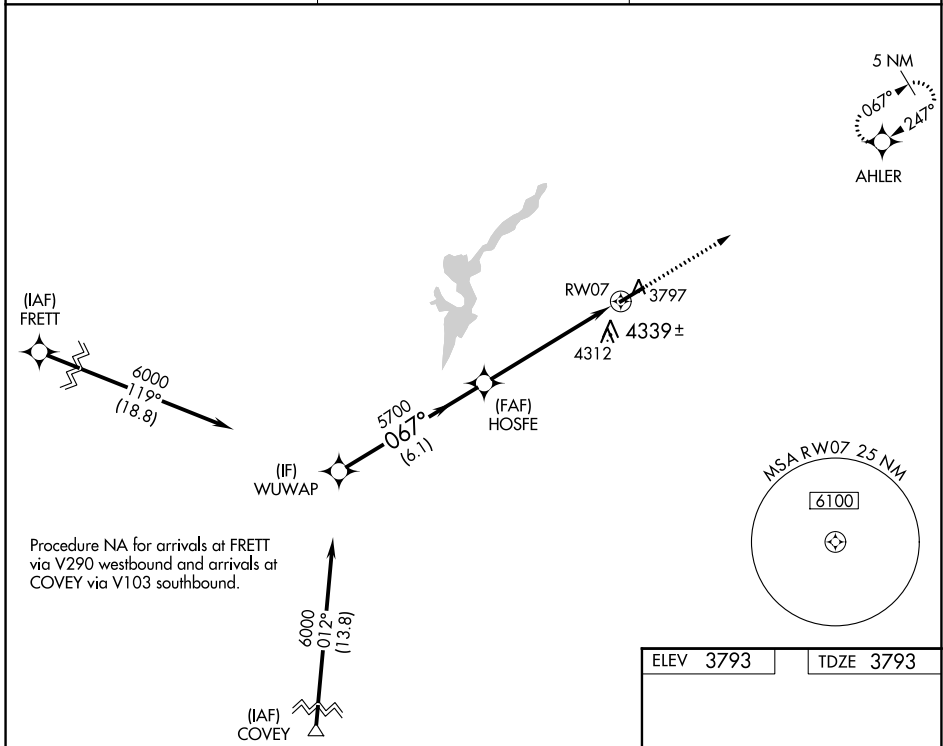
RNAV (GPS) RWY 7

INGALLS FLD (HSP)

⚠ Circling NA southeast of Rwy 7-25. Baro-VNAV NA.
⚠ DME/DME RNP-0.3 NA. Visibility reduction by helicopters NA.
 When local altimeter setting not received, procedure NA.

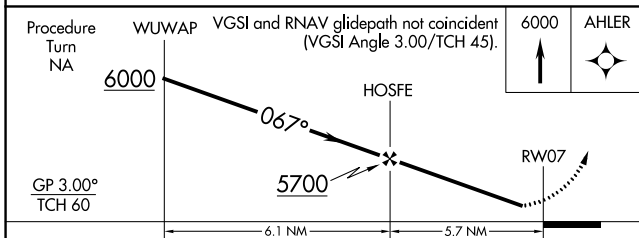
MISSED APPROACH: Climb to 6000 direct AHLER and hold.

AWOS-3 118.8	WASHINGTON CENTER 134.4 353.9	UNICOM 123.0 (CTAF) 0
------------------------	---	---------------------------------



NE-3, 22 FEB 2024 to 21 MAR 2024

NE-3, 22 FEB 2024 to 21 MAR 2024



ELEV 3793	TDZE 3793
-----------	-----------

067° to RWY 7

REIL Rwy 25 0
HIRL Rwy 7-25 0

CATEGORY	A	B	C	D
LPV DA	4143-1¼		350 (400-1¼)	
LNAB/VNAV DA	4619-3		826 (900-3)	
LNAB MDA	4700-1¼ 907 (1000-1¼)		4700-2¾ 907 (1000-2¾) 4700-3 907 (1000-3)	
C CIRCLING	4700-1¼ 907 (1000-1¼)		4700-2¾ 907 (1000-2¾) 4700-3 907 (1000-3)	