

WAAS CH <b>97630</b> <b>W23A</b>	APP CRS <b>234°</b>	Rwy Idg TDZE <b>969</b> Apt Elev <b>977</b>	<b>3520</b>
--	------------------------	---	-------------

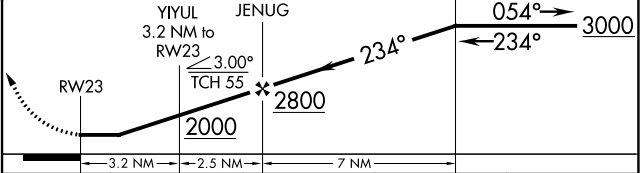
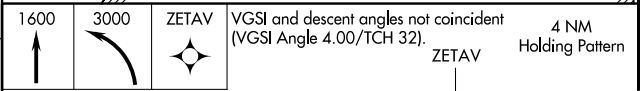
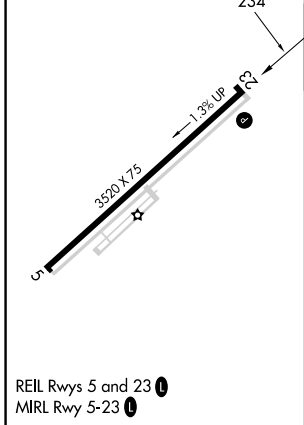
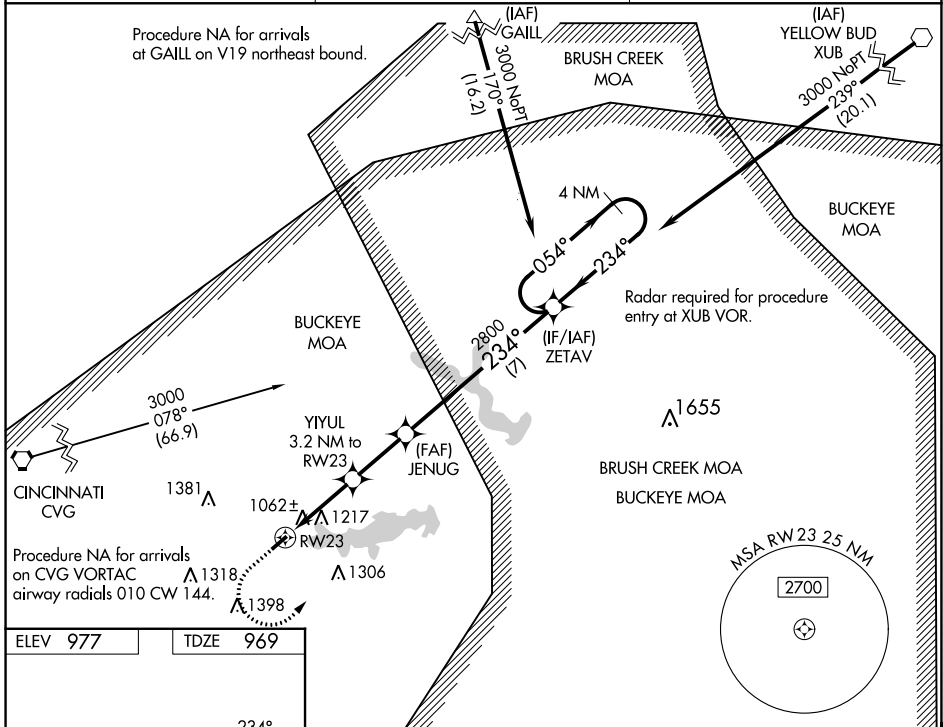
# RNAV (GPS) RWY 23

HIGHLAND COUNTY (HOC)

**NA** DME/DME RNP-0.3 NA. Visibility reduction by helicopters NA. When local altimeter setting not received, use Wilmington Air Park altimeter setting and increase all MDA 60 feet; increase LNAV Cats C/D visibility 1/8 SM, increase LP Cats C/D visibility 1/4 SM, and increase Circling Cats C/D visibility 1/4 SM. When VGSI inop, Straight-in/Circling Rwy 23 procedure NA at night. Circling to Rwy 05 NA at night.

**MISSED APPROACH:** Climb to 1600 then climbing left turn to 3000 direct ZETAV and hold.

AWOS-3 <b>118.175</b>	INDIANAPOLIS CENTER <b>135.575 290.5</b>	UNICOM <b>123.05 (CTAF)</b>
--------------------------	---	--------------------------------



CATEGORY	A	B	C	D
LP MDA	1320-1	351 (400-1)	1320-1 1/8	351 (400-1 1/8)
LNAV MDA	1480-1	511 (600-1)	1480-1 1/8	511 (600-1 1/8)
CIRCLING	1500-1 523 (600-1)	1520-1 543 (600-1)	1700-2 723 (800-2)	1700-2 1/4 723 (800-2 1/4)

EC-2, 22 FEB 2024 to 21 MAR 2024

EC-2, 22 FEB 2024 to 21 MAR 2024