

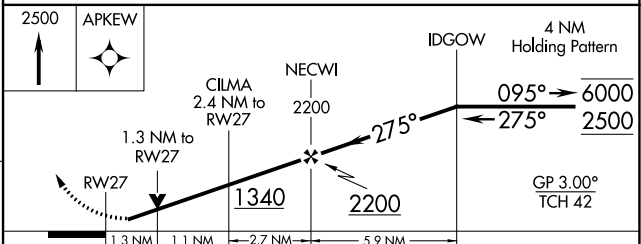
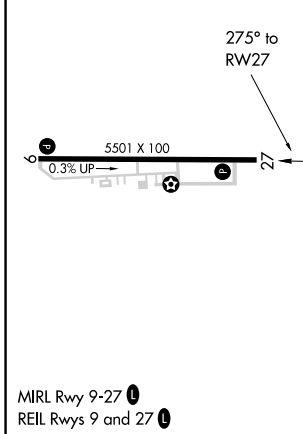
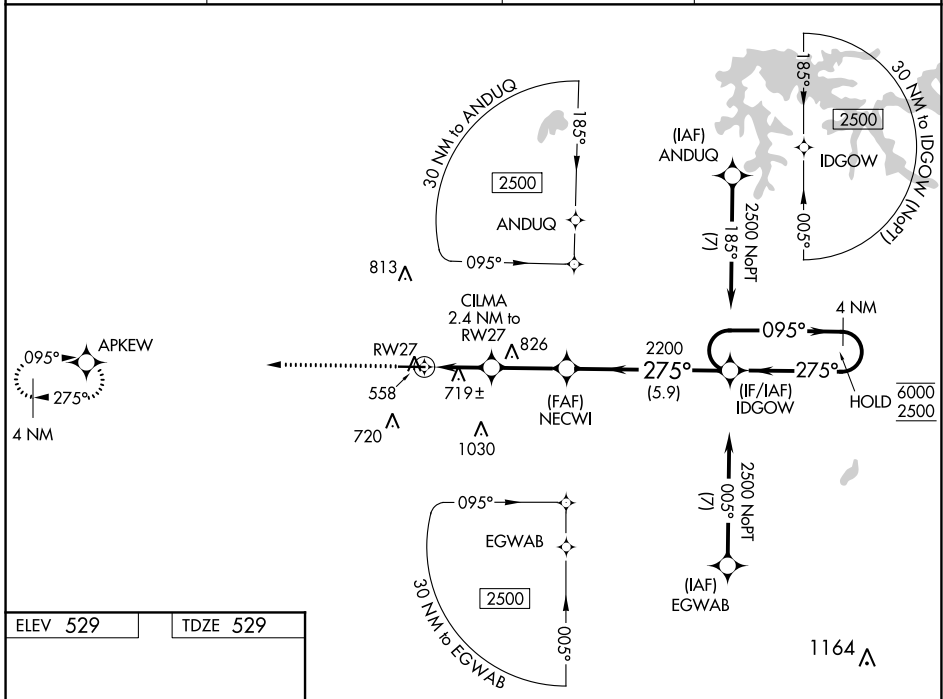
WAAS CH 86815 W27A	APP CRS 275°	Rwy Idg TDZE Apt Elev	5501 529 529
--	------------------------	-----------------------------	---

RNAV (GPS) RWY 27

HUNTINGBURG (HNB)

RNP APCH - GPS.	<p>▽ Rwy 27 helicopter visibility reduction below 3/4 SM NA. For uncompensated Baro-VNAV systems, LNAV/VNAV NA below -16°C or above 54°C.</p> <p>▲ MISSED APPROACH: Climb to 2500 direct APKEW and hold.</p>

AWOS-3PT 118.250	EVANSVILLE APP CON * 124.025 290.9	CLNC DEL 118.8	UNICOM 122.8 (CTAF) 0
----------------------------	--	--------------------------	---------------------------------



CATEGORY	A	B	C	D
LPV DA		729-1	200 (200-1)	
LNAV/VNAV DA		1038-1 3/8	509 (600-1 3/8)	
LNAV MDA	980-1	451 (500-1)	980-1 3/8	451 (500-1 3/8)
C CIRCLING	1020-1 491 (500-1)	1040-1 511 (600-1)	1040-1 1/2 511 (600-1 1/2)	1380-2 3/4 851 (900-2 3/4)

EC-2, 19 MAY 2022 to 16 JUN 2022

EC-2, 19 MAY 2022 to 16 JUN 2022

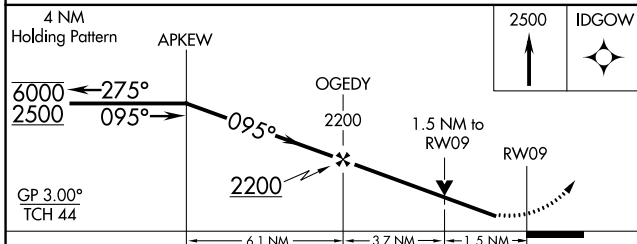
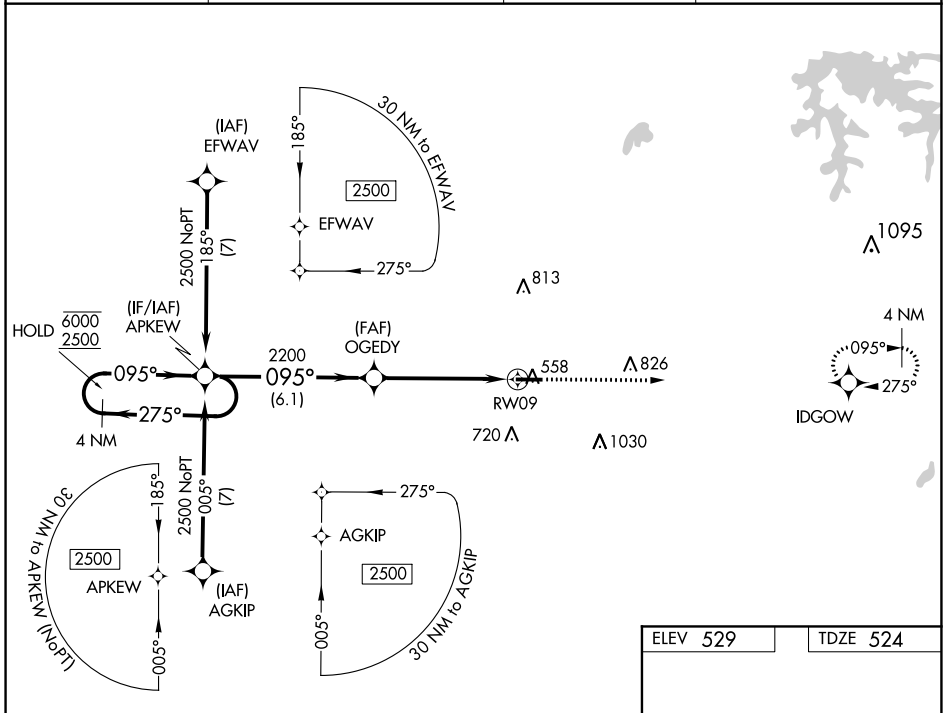
WAAS CH 49207 W09A	APP CRS 095°	Rwy Idg TDZE Apt Elev	5501 524 529
--	------------------------	-----------------------------	---

RNAV (GPS) RWY 9

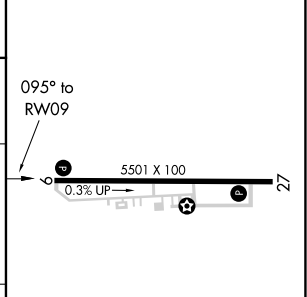
HUNTINGBURG (HNB)

RNP APCH - GPS.		MISSED APPROACH: Climb to 2500 direct IDGOW and hold.
▼ Rwy 9 helicopter visibility reduction below 3/4 SM NA. ▲ For uncompensated Baro-VNAV systems, LNAV/VNAV NA below -16°C or above 54°C.		

AWOS-3PT 118.250	EVANSVILLE APP CON ★ 124.025 290.9	CLNC DEL 118.8	UNICOM 122.8 (CTAF) 0
----------------------------	--	--------------------------	---------------------------------



ELEV 529	TDZE 524
----------	----------



CATEGORY	A	B	C	D
LPV DA		774-3/4	250 (300-3/4)	
LNAV/VNAV DA		810-7/8	286 (300-7/8)	
LNAV MDA	1020-1	496 (500-1)	1020-1 3/8	496 (500-1 3/8)
CIRCLING	1020-1 491 (500-1)	1040-1 511 (600-1)	1040-1 1/2 511 (600-1 1/2)	1380-2 3/4 851 (900-2 3/4)

MIRL Rwy 9-27 0
REIL Rwy 9 and 27 0

EC-2, 19 MAY 2022 to 16 JUN 2022

EC-2, 19 MAY 2022 to 16 JUN 2022