

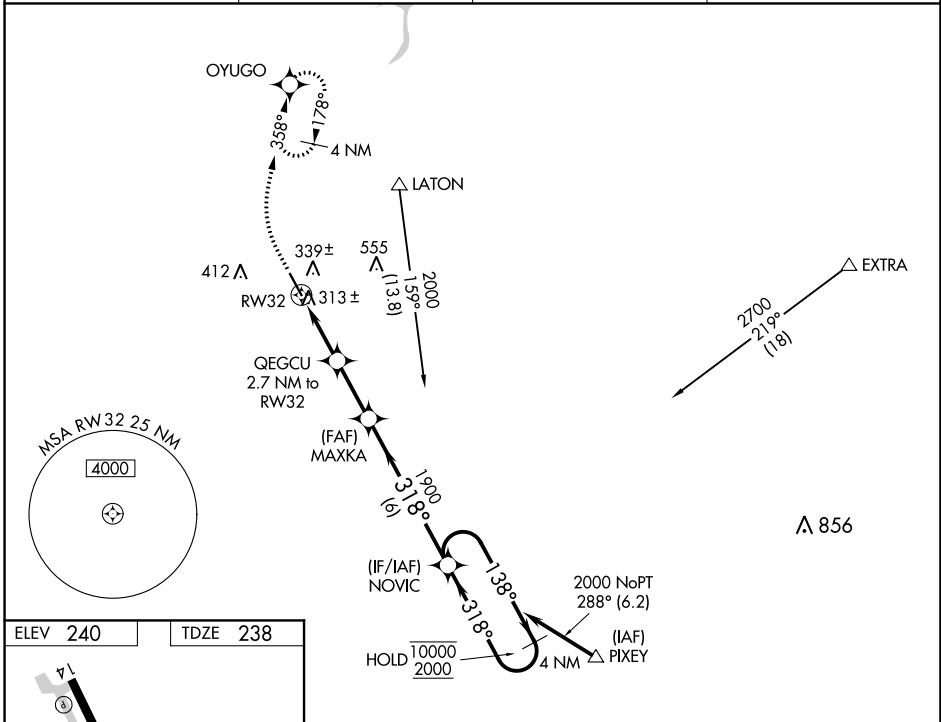
WAAS CH <b>70344</b> <b>W32A</b>	APP CRS <b>318°</b>	Rwy Idg TDZE Apt Elev	<b>5179</b> <b>238</b> <b>240</b>
--	------------------------	-----------------------------	---

# RNAV (GPS) RWY 32

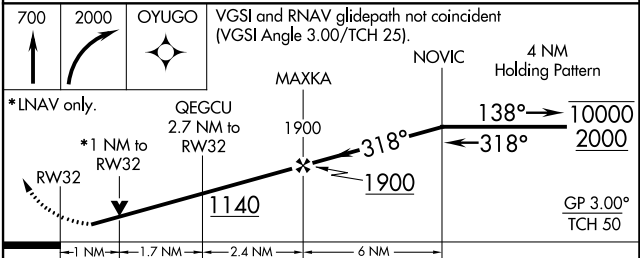
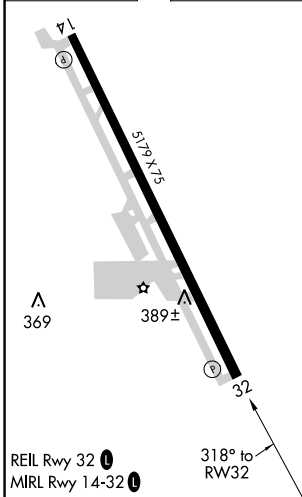
HANFORD MUNI (HJO)

RNP APCH.	MISSED APPROACH: Climb to 700 then climbing right turn to 2000 direct OYUGO and hold, continue climb-in-hold to 2000.
▼ Rwy 32 helicopter visibility reduction below 3/4 SM NA. For uncompensated Baro-VNAV systems, LNAV/VNAV NA below -3°C or above 54°C.	

ASOS <b>134.75</b>	FRESNO APP CON <b>123.9</b>	CLNC DEL <b>123.9</b>	UNICOM <b>122.8 (CTAF)</b>
-----------------------	--------------------------------	--------------------------	-------------------------------



ELEV <b>240</b>	TDZE <b>238</b>
-----------------	-----------------



CATEGORY	A	B	C	D
LPV DA	488-3/4	250 (300-3/4)		NA
LNAV/VNAV DA	488-3/4	250 (300-3/4)		NA
LNAV MDA	580-1	342 (400-1)	580-1 1/2 342 (400-1 1/2)	NA

SW-2, 19 MAY 2022 to 16 JUN 2022

SW-2, 19 MAY 2022 to 16 JUN 2022

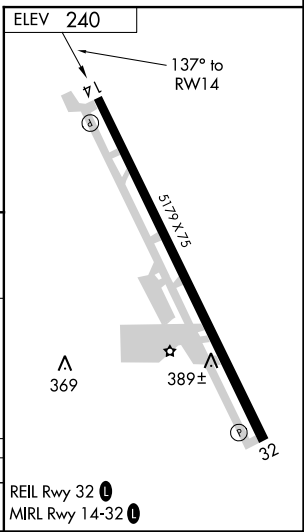
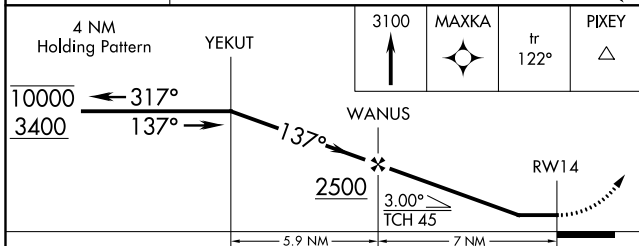
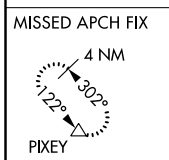
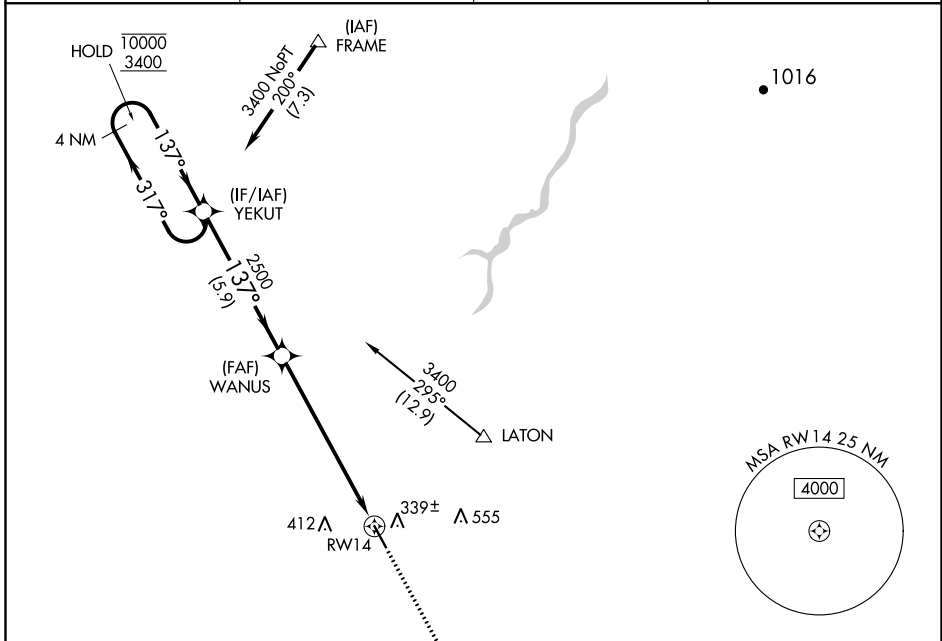
APP CRS <b>137°</b>	Rwy Idg TDZE Apt Elev	<b>N/A</b> <b>N/A</b> <b>240</b>
------------------------	-----------------------------	--

# RNAV (GPS)-B

HANFORD MUNI (HJO)

RNP APCH: ▼ Circling Rwy 14 NA at night.		MISSED APPROACH: Climb to 3100 direct MAXKA and on track 122° to PIXEY and hold.	
---	--	--	--

ASOS <b>134.75</b>	FRESNO APP CON <b>123.9</b>	CLNC DEL <b>123.9</b>	UNICOM <b>122.8</b> (CTAF) <b>0</b>
-----------------------	--------------------------------	--------------------------	--



CATEGORY	A	B	C	D
<b>C</b> CIRCLING	760-1	520 (600-1)	760-1½ 520 (600-1½)	NA

REIL Rwy 32 **0**  
MIRL Rwy 14-32 **0**

SW-2, 19 MAY 2022 to 16 JUN 2022

SW-2, 19 MAY 2022 to 16 JUN 2022