

CAMP MACKALL, NORTH CAROLINA

RNAV (GPS) RWY 12

WAAS CH 92382 W12A	APCH CRS 118°	Rwy ldg TDZE Arpt Elev	4794 375 376
---------------------------------	-------------------------	------------------------------	---

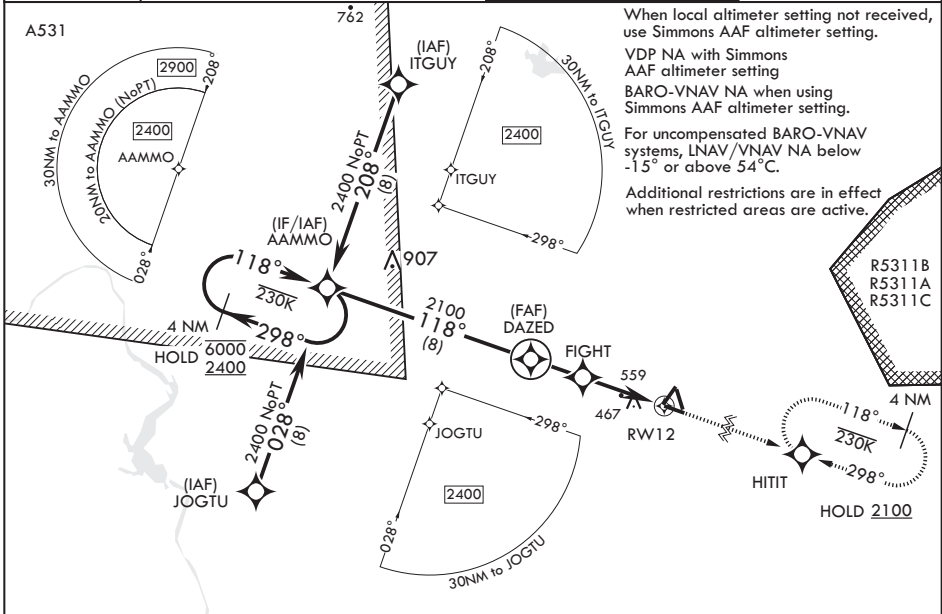
AL-6315 (USA)

MACKALL AAF (KHFF)

RNP APCH-GPS MISSED APPROACH: Climb to 2100 direct HITIT and hold.

V * When tower closed, increase vis to 1 mile.
** Circling NA to RWYs 4,16,22, and 34.

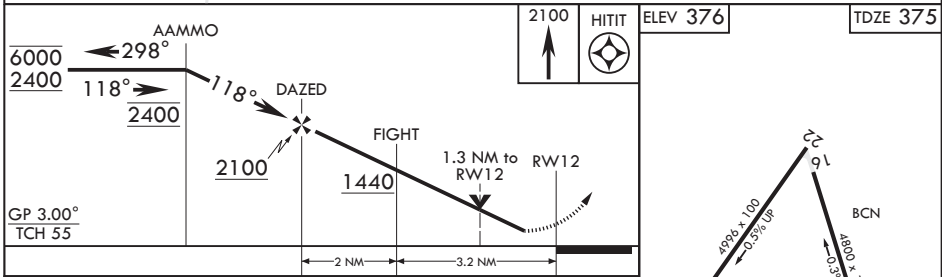
D-ATIS 141.4	FAYETTEVILLE APP CON/DEP CON 127.8 343.725	TOWER★ 121.0 (CTAF) 254.4	GND CON 128.35 251.05
------------------------	--	--	---------------------------------



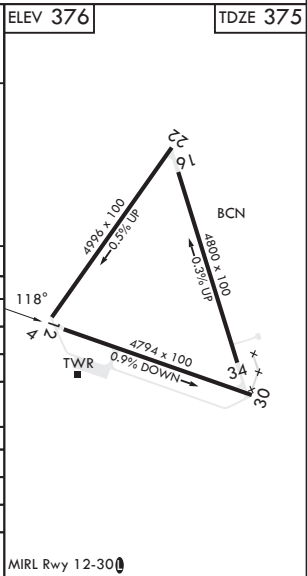
When local altimeter setting not received, use Simmons AAF altimeter setting.
VDP NA with Simmons AAF altimeter setting
BARO-VNAV NA when using Simmons AAF altimeter setting.
For uncompensated BARO-VNAV systems, LNAV/VNAV NA below -15° or above 54°C.
Additional restrictions are in effect when restricted areas are active.

SE-2, 22 FEB 2024 to 21 MAR 2024

SE-2, 22 FEB 2024 to 21 MAR 2024



CATEGORY	A	B	C	D
LPV DA*	575-¾	200	(200-¾)	
LNAV/VNAV DA	851-1½	476	(500-1½)	
LNAV MDA	840-1 465 (500-1)	840-1½ 465 (500-1½)		
C CIRCLING**	860-1 484 (500-1)	880-1 504 (600-1)	980-1¼ 604 (700-1¼)	1040-2 664 (700-2)
SIMMONS AAF ALTIMETER SETTING MINIMUMS				
LPV DA*	659-7/8	284	(300-7/8)	
LNAV/VNAV DA	935-1½	560	(600-1½)	
LNAV MDA	940-1 565 (600-1)	940-1½ 565 (600-1½)		
C CIRCLING**	960-1 584 (600-1)	980-1 604 (700-1)	1080-2 704 (800-2)	1140-2½ 764 (800-2½)



CAMP MACKALL, NORTH CAROLINA

35°02'N - 79°30'W

MACKALL AAF (KHFF)

Amdt 1 10AUG23

RNAV (GPS) RWY 12

MIRL Rwy 12-30

CAMP MACKALL, NORTH CAROLINA

RNAV (GPS) RWY 30

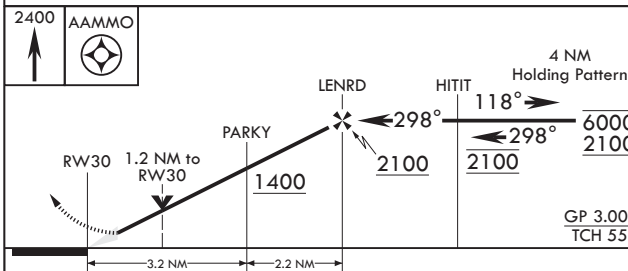
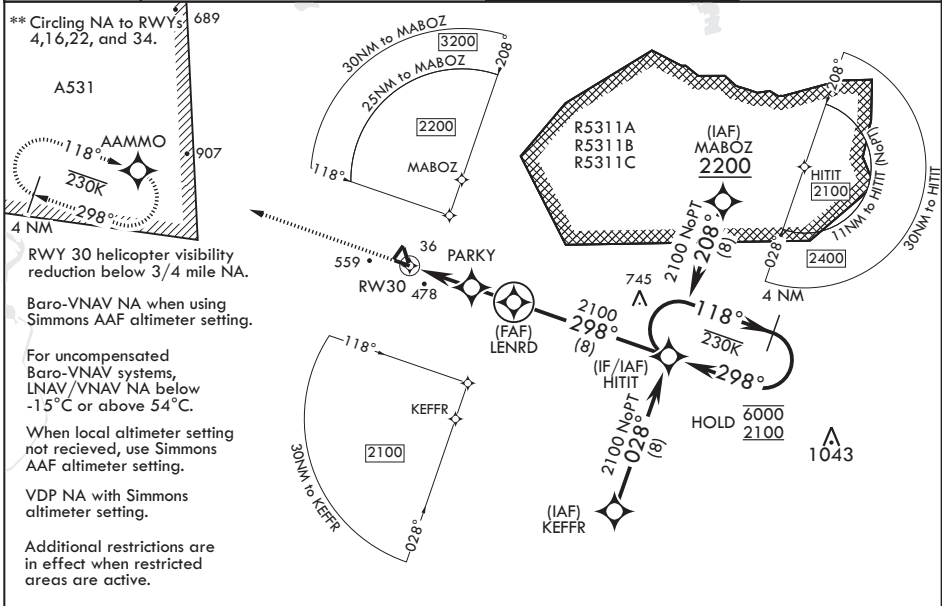
WAAS CH 51219 W30A	APCH CRS 298°	Rwy ldg TDZE 4794 352	Arprt Elev 376
--------------------	---------------	-----------------------	----------------

AL-6315 (USA)

MACKALL AAF (KHFF)

RNP APCH-GPS	MISSED APPROACH: Climb to 2400 direct AAMMO and hold.
RADAR required when special use space active.	
* When tower closed, increase vis to 1 mile.	

D-ATIS 141.4	FAYETTEVILLE APP CON/DEP CON 127.8 343.725	TOWER* 121.0 (CTAF) 254.4	GND CON 128.35 251.05
--------------	--	---------------------------	-----------------------



CATEGORY	A	B	C	D
LPV DA*	602-3/4	250	(300-3/4)	
LNAV/VNAV DA	793-1 3/8	441	(500-1%)	
LNAV MDA	760-1 408 (400-1)	760-1 408 (400-1 1/8)		
C CIRCLING**	860-1 484 (500-1)	880-1 504 (600-1)	980-1 604 (700-1 3/4)	1040-2 664 (700-2)
SIMMONS AAF ALTIMETER SETTING MINIMUMS				
LPV DA	686-1	334	(400-1)	
LNAV/VNAV DA	860-1 3/8	508	(500-1%)	
LNAV MDA	860-1 508 (500-1)	860-1 508 (500-1%)		
C CIRCLING**	960-1 584 (600-1)	980-1 604 (700-1)	1080-2 704 (800-2)	1140-2 764 (800-2 1/2)

MIRL Rwy 12-30

SE-2, 22 FEB 2024 to 21 MAR 2024

SE-2, 22 FEB 2024 to 21 MAR 2024

CAMP MACKALL, NORTH CAROLINA

35°02'N - 79°30'W

MACKALL AAF (KHFF)

Amdt 1 07SEP23

RNAV (GPS) RWY 30