

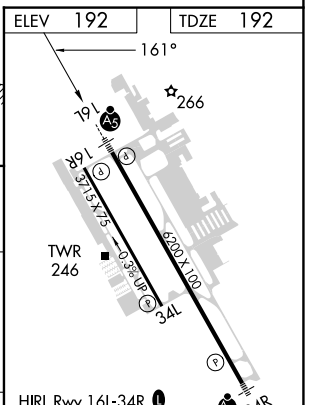
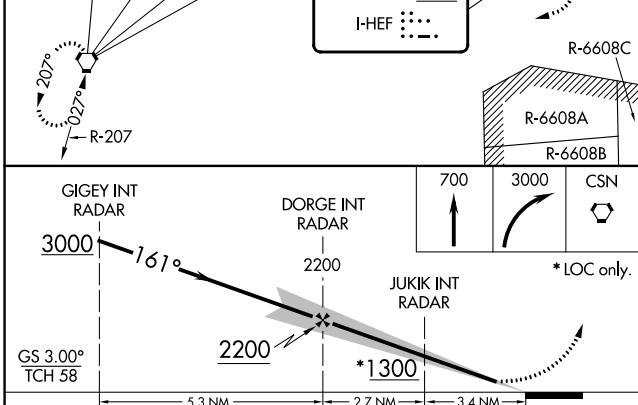
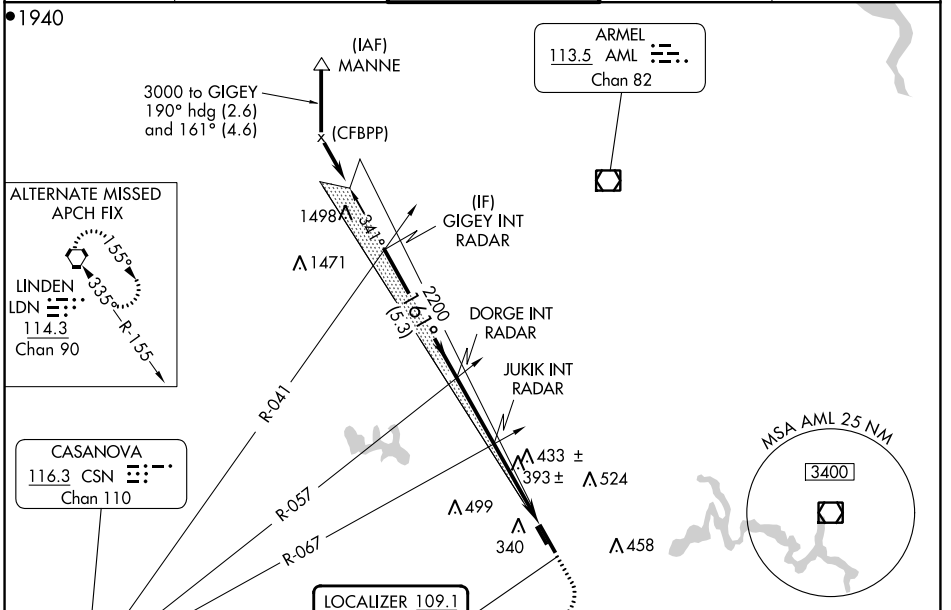
LOC I-HEF 109.1	APP CRS 161°	Rwy Idg TDZE Apt Elev	6200 192 192
---------------------------	------------------------	-----------------------------	---

ILS or LOC RWY 16L

MANASSAS RGNL/HARRY P DAVIS FLD (HEF)

<p>When local altimeter setting not received, use Dulles altimeter setting and increase DA 49 feet, all MDA 60 feet, and increase Cat C/D Circling visibility ¼ mile.</p>	<p>MALS R</p>	<p>MISSED APPROACH: Climb to 700, then climbing right turn to 3000 direct CSN VORTAC and hold.</p>		
			<p>ATIS 125.175</p>	<p>POTOMAC APP CON 128.525 306.925</p>

ATIS 125.175	POTOMAC APP CON 128.525 306.925	MANASSAS TOWER * 133.1 (CTAF) 360.75	GND CON 121.8	CLNC DEL 120.2
------------------------	---	--	-------------------------	--------------------------



CATEGORY	A	B	C	D	
S-ILS 16L	392-½ 200 (200-½)				
S-LOC 16L	660-½	468 (500-½)	660-1	468 (500-1)	
CIRCLING	720-1	740-1	840-1¾	880-2¼	
	528 (600-1)	548 (600-1)	648 (700-1¾)	688 (700-2¼)	
FAF to MAP 6.1 NM					
Knots	60	90	120	150	180
Min:Sec	6:06	4:04	3:03	2:26	2:02

NE-3, 22 FEB 2024 to 21 MAR 2024

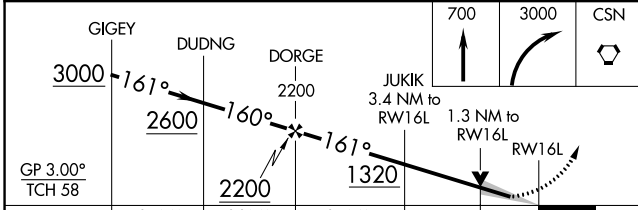
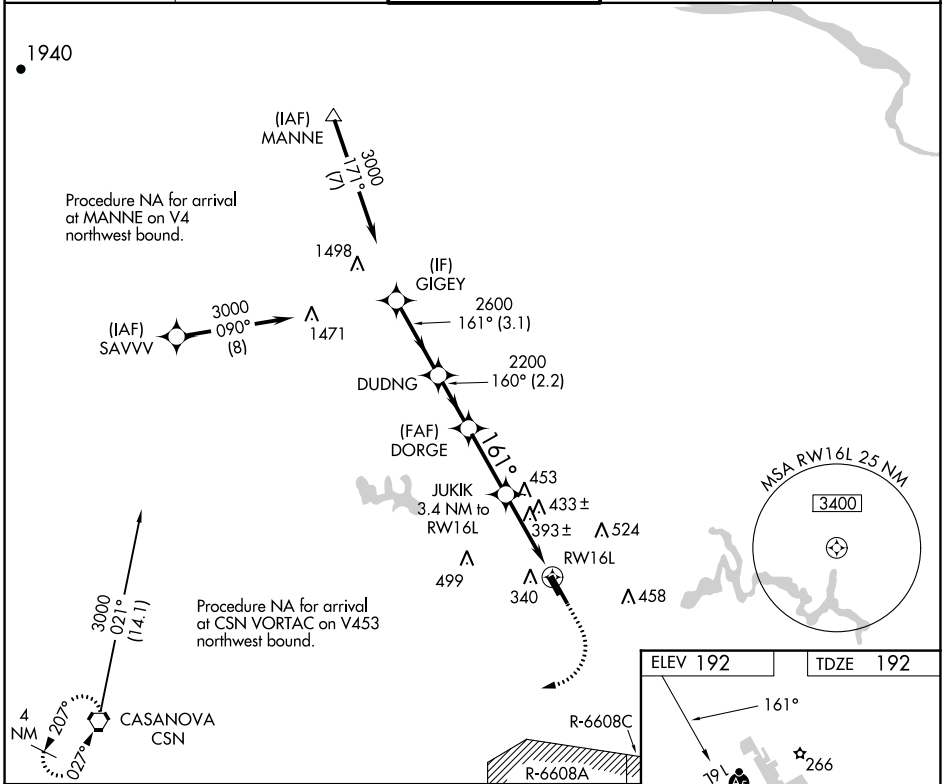
NE-3, 22 FEB 2024 to 21 MAR 2024

WAAS CH 70302 W16A	APP CRS 161°	Rwy ldg TDZE 192 Apt Elev 192
--	------------------------	---

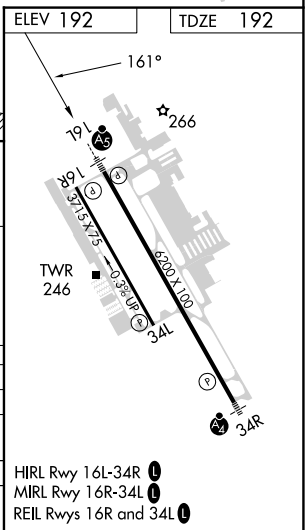
RNAV (GPS) RWY 16L

MANASSAS RGNL/HARRY P DAVIS FLD (HEF)

RNP APCH - GPS.		MALSRL	MISSED APPROACH: Climb to 700 then climbing right turn to 3000 direct CSN VORTAC and hold.	
<p>▼ For uncompensated Baro-VNAV systems, LNAV/VNAV NA below -15°C or above 54°C. For inop ALS, increase LNAV Cat C/D visibility to 1½ SM.</p>				
ATIS 125.175	POTOMAC APP CON 128.525 306.925	MANASSAS TOWER ★ 133.1 (CTAF) 0 360.75	GND CON 121.8	CLNC DEL 120.2



CATEGORY	A		B		C		D
LPV DA	442-½		250 (300-½)				
LNAV/VNAV DA	635-7/8		443 (500-7/8)				
LNAV MDA	660-½		468 (500-½)		660-1		468 (500-1)
CIRCLING	720-1		740-1		840-1¾		880-2¼
	528 (600-1)		548 (600-1)		648 (700-1¾)		688 (700-2¼)



NE-3, 22 FEB 2024 to 21 MAR 2024

NE-3, 22 FEB 2024 to 21 MAR 2024

WAAS CH 78035 W16B	APP CRS 161°	Rwy Idg 3715 TDZE 186 Apt Elev 192
--	------------------------	---

RNAV (GPS) RWY 16R

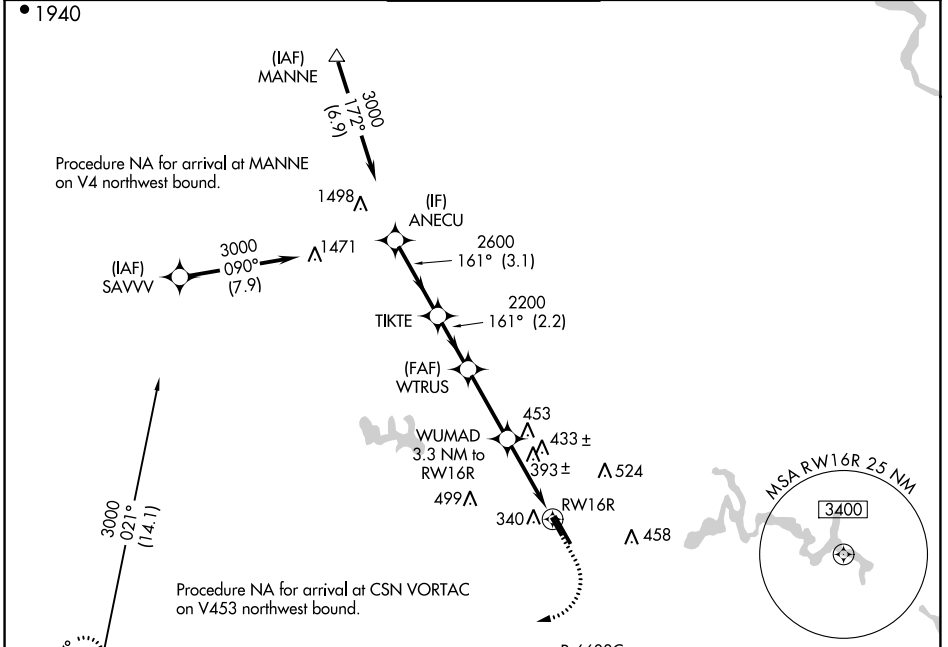
MANASSAS RGNL/HARRY P DAVIS FLD (HEF)

RNP APCH - GPS.

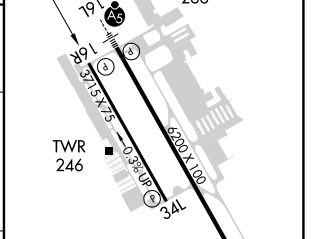
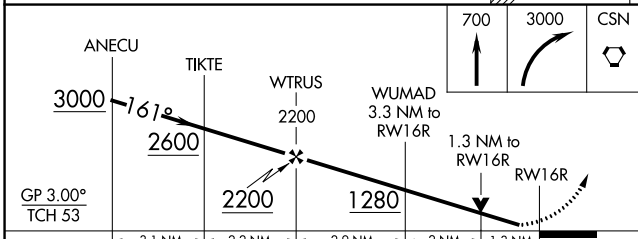
▼ Rwy 16R helicopter visibility reduction below 3/4 SM NA. For uncompensated Baro-VNAV systems, LNAV/VNAV NA below -1.5°C or above 54°C.

MISSED APPROACH: Climb to 700 then climbing right turn to 3000 direct CSN VORTAC and hold.

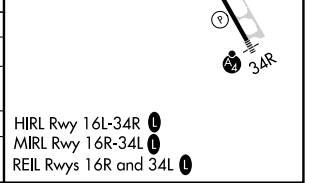
ATIS 125.175	POTOMAC APP CON 128.525 306.925	MANASSAS TOWER * 133.1 (CTAF) 0 360.75	GND CON 121.8	CLNC DEL 120.2
------------------------	---	--	-------------------------	--------------------------



ELEV 192	TDZE 186
----------	----------



CATEGORY	A	B	C	D
LPV DA		494-7/8	308 (400-7/8)	
LNAV/VNAV DA		675-1 3/8	489 (500-1 3/8)	
LNAV MDA	660-1	474 (500-1)	660-1 3/8	474 (500-1 3/8)
CIRCLING	720-1 528 (600-1)	740-1 548 (600-1)	840-1 3/4 648 (700-1 3/4)	880-2 1/4 688 (700-2 1/4)



NE-3, 22 FEB 2024 to 21 MAR 2024

NE-3, 22 FEB 2024 to 21 MAR 2024

WAAS CH 56239 W34B	APP CRS 326°	Rwy Idg 3715 TDZE 182 Apt Elev 192
--	------------------------	---

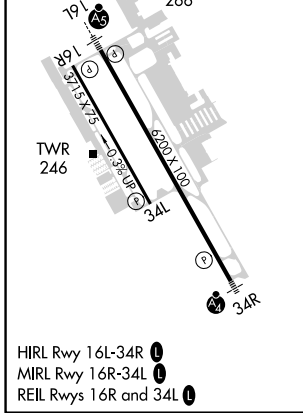
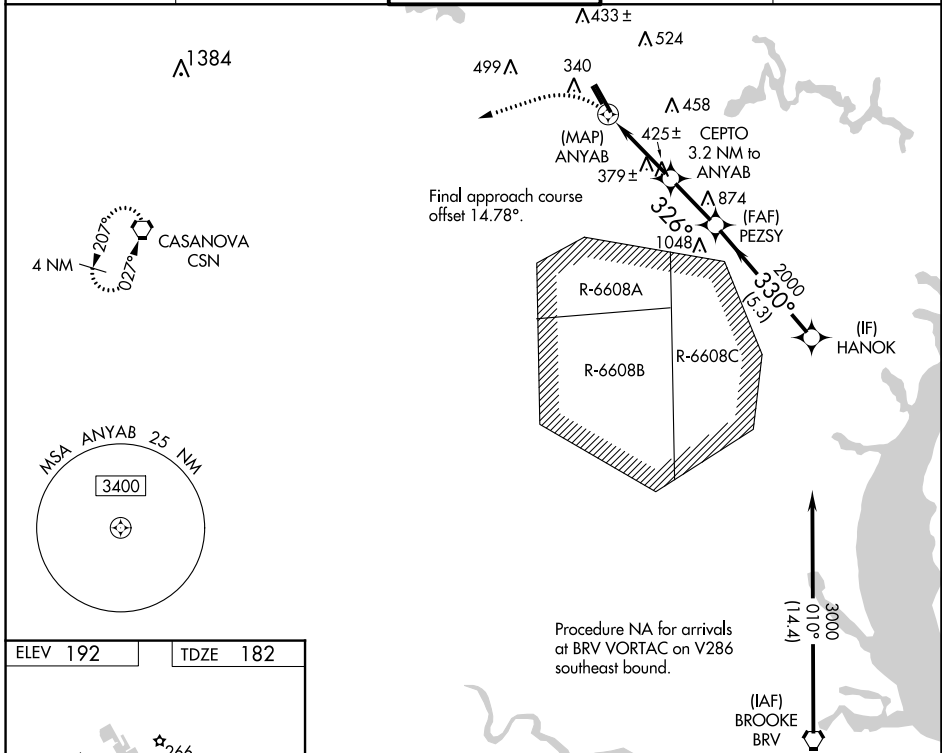
RNAV (GPS) RWY 34L

MANASSAS RGNL/HARRY P DAVIS FLD (HEF)

⚠ DME/DME RNP-0.3 NA. When local altimeter setting not received, use Washington Dulles Intl altimeter setting and increase all MDA 60 feet; increase LNAV Cat C/D and Circling Cat C and D visibility ¼ mile. Helicopter visibility reduction below ¾ SM NA.

MISSED APPROACH:
Climbing left turn to 3000 direct CSN VORTAC and hold.

ATIS 125.175	POTOMAC APP CON 128.525 306.925	MANASSAS TOWER * 133.1 (CTAF) 0 360.75	GND CON 121.8	CLNC DEL 120.2
------------------------	---	---	-------------------------	--------------------------



3000	CSN	VGSi and descent angles not coincident (VGSi Angle 3.00/TCH 43).			
		CEPTO 3.2 NM to ANYAB		HANOK	
0.9 NM to ANYAB		PEZSY		3000	
ANYAB		1260		330°	
0.4		2.4 NM		2.3 NM	
CATEGORY		A		B	
LP MDA		640-1		458 (500-1)	
LNAV MDA		680-1		498 (500-1)	
CIRCLING		720-1		740-1	
		528 (600-1)		548 (600-1)	
		840-1 ¾		880-2 ¼	
		648 (700-1 ¾)		688 (700-2 ¼)	

NE-3, 22 FEB 2024 to 21 MAR 2024

NE-3, 22 FEB 2024 to 21 MAR 2024

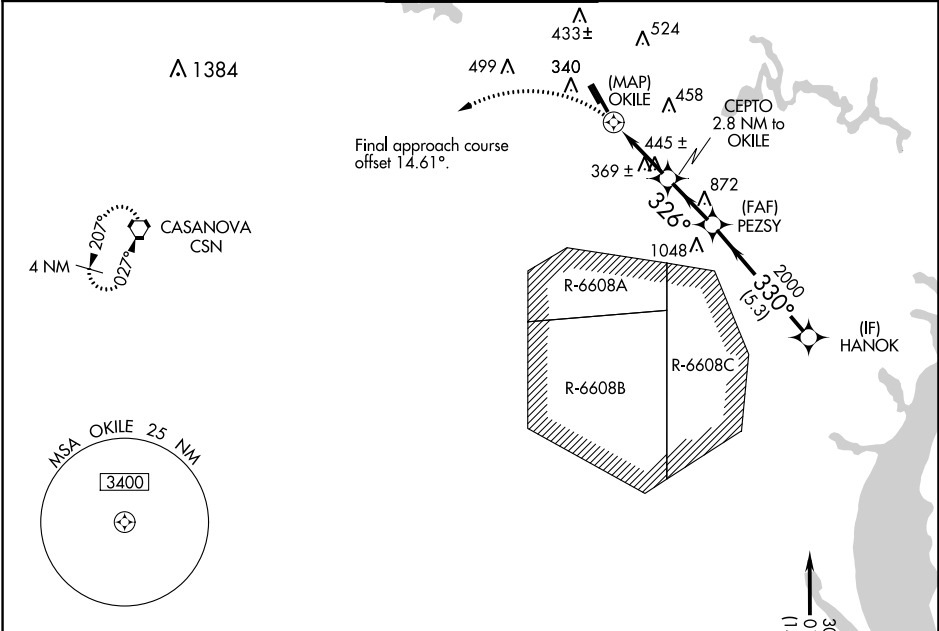
WAAS CH 63130 W34A	APP CRS 326°	Rwy Idg TDZE Apt Elev	6200 178 192
--	------------------------	-----------------------------	---

RNAV (GPS) RWY 34R

MANASSAS RGNL/HARRY P DAVIS FLD (HEF)

RNP APCH. ▼ Rwy 34R helicopter visibility reduction below 3/4 SM NA. For inop ALS, increase LP and LNAV Cats C/D visibility to 1 3/8 SM. ▲	MALSF [Symbol]	MISSED APPROACH: Climbing left turn to 3000 direct CSN VORTAC and hold.
--	-------------------	---

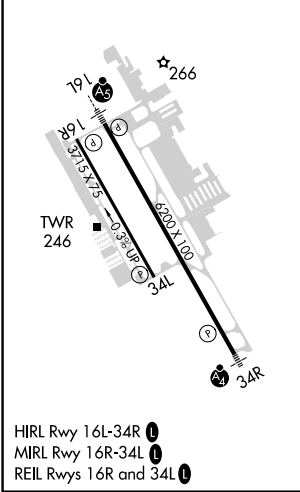
ATIS 125.175	POTOMAC APP CON 128.525 306.925	MANASSAS TOWER ★ 133.1 (CTAF) 360.75	GND CON 121.8	CLNC DEL 120.2
------------------------	---	--	-------------------------	--------------------------



NE-3, 22 FEB 2024 to 21 MAR 2024

NE-3, 22 FEB 2024 to 21 MAR 2024

ELEV 192	TDZE 178
-----------------	-----------------



Procedure NA for arrivals at BRV VORTAC on V286 southeast bound.



3000	CSN	HANOK			
3000	CSN	CEPTO 2.8 NM to OKILE	PEZSY	HANOK 3000	
OKILE	1 NM to OKILE	1260	326°	2000	330°
0.5	1 NM	1.8 NM	2.3 NM	5.3 NM	
CATEGORY	A	B	C	D	
LP MDA	620-1 442 (500-1)				
LNAV MDA	640-1	462 (500-1)	640-1 1/8	462 (500-1 1/8)	
CIRCLING	700-1	740-1	840-1 3/4	920-2 1/4	
	508 (600-1)	548 (600-1)	648 (700-1 1/4)	728 (800-2 1/4)	