

LOC I-HPF <b>111.5</b>	APP CRS <b>180°</b>	Rwy Idg <b>5001</b> TDZE <b>44</b> Apt Elev <b>46</b>
---------------------------	------------------------	---

# ILS or LOC RWY 18

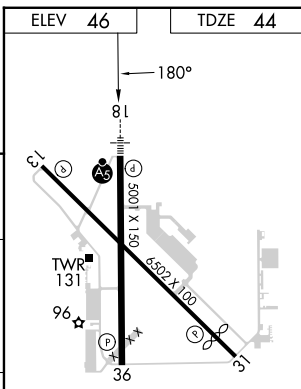
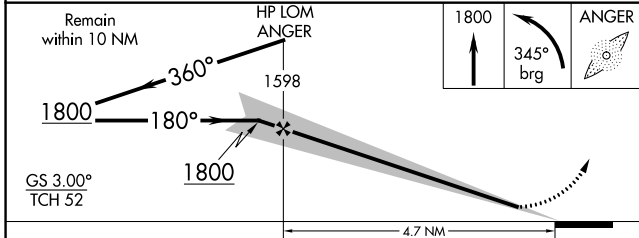
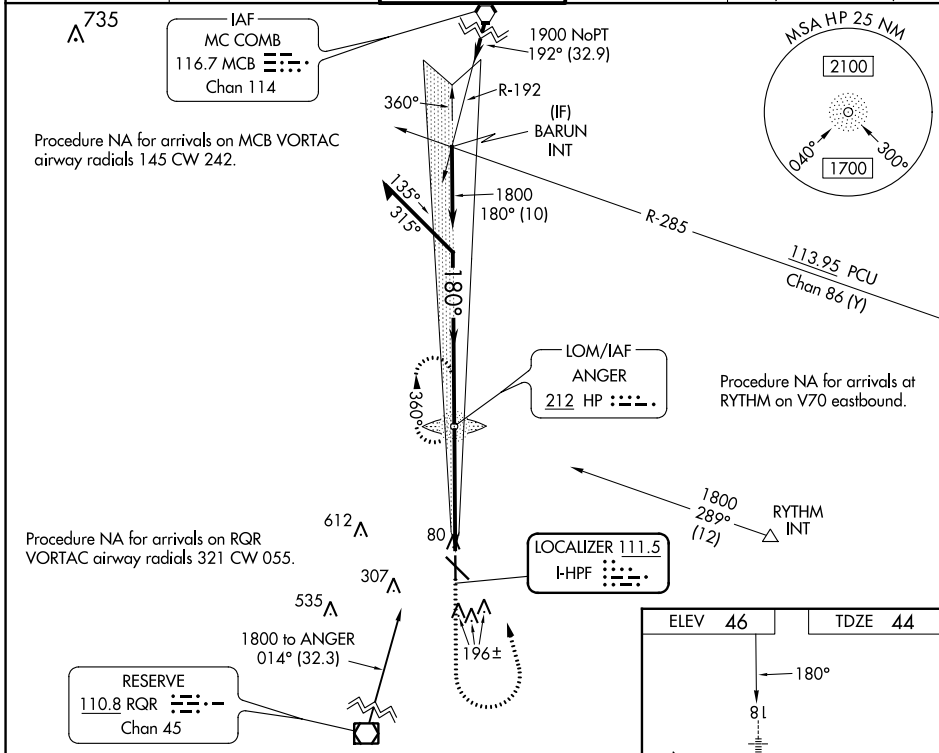
HAMMOND NORTHSORE RGNL (HDC)

ADF required.

**NA** For inop ALS, increase S-LOC 18 Cat C/D visibility to 1 3/8 SM. When local altimeter setting not received, use Louis Armstrong New Orleans Intl altimeter setting and increase S-ILS 18 DA to 339 feet; increase all MDAs 100 feet and S-LOC 18 visibility Cat C/D 1/4 SM, and Circling visibility Cat C/D 1/2 SM. For inop ALS when using Louis Armstrong New Orleans Intl altimeter setting, increase S-ILS all Cats visibility to 3/8 SM.

**MALSR** MISSED APPROACH: Climb to 1800 then left turn on 345° bearing to ANGER LOM and hold.

ATIS <b>118.325</b>	NEW ORLEANS APP CON <b>119.3 350.35</b>	HAMMOND TOWER ★ <b>120.575</b> (CTAF) <b>0</b>	GND CON <b>119.85</b>	CLNC DEL <b>119.3</b> (When twr closed)
------------------------	--	---	--------------------------	---



CATEGORY	A	B	C	D
S-ILS 18	250-1/2 206 (300-1/2)			
S-LOC 18	540-1/2	496 (500-1/2)	540-1	496 (500-1)
CIRCLING	540-1	494 (500-1)	620-1 1/2 574 (600-1 1/2)	920-2 3/4 874 (900-2 3/4)

REIL Rwy 13, 31 and 36  
MIRL Rwy 13-31 and 18-36

FAF to MAP 4.7 NM

Knots	60	90	120	150	180
Min:Sec	4:42	3:08	2:21	1:53	1:34

SC-4, 22 FEB 2024 to 21 MAR 2024

SC-4, 22 FEB 2024 to 21 MAR 2024

APP CRS	Rwy Idg	<b>6502</b>
<b>134°</b>	TDZE	<b>46</b>
	Apt Elev	<b>46</b>

# RNAV (GPS) RWY 13

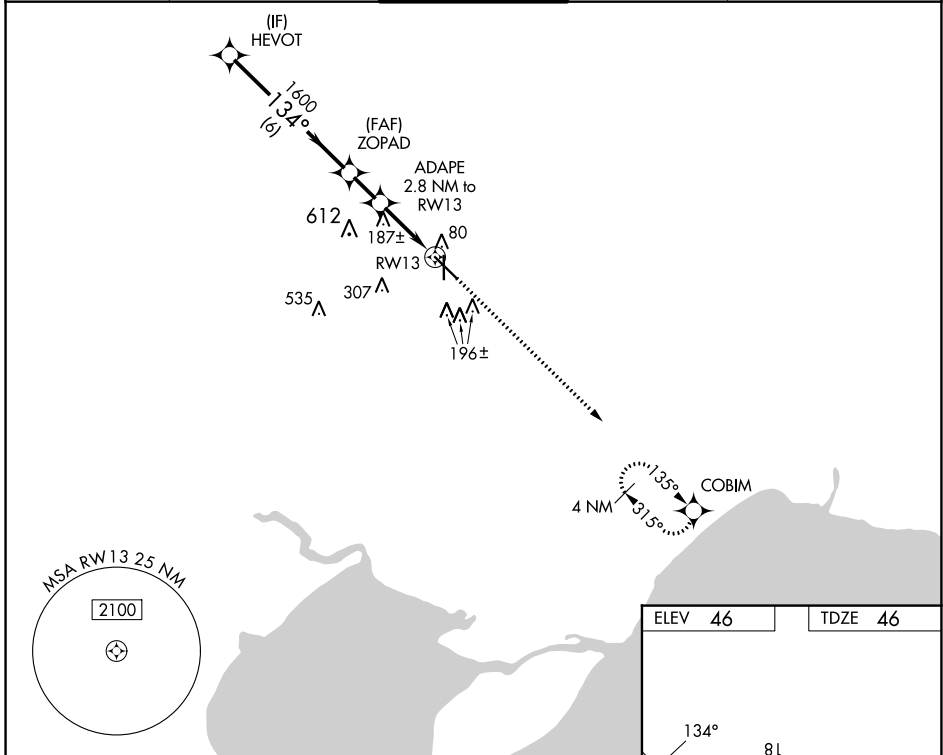
HAMMOND NORTHSHORE RGNL (HDC)

RNP APCH - GPS.

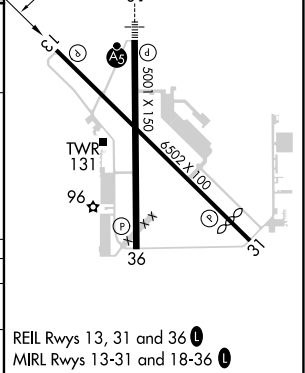
**⚠** Rwy 13 helicopter visibility reduction below 3/4 SM NA. VDP NA when using Louis Armstrong New Orleans Intl altimeter setting. When local altimeter setting not received, use Louis Armstrong New Orleans Intl altimeter setting and increase all MDAs 100 feet and LNAV visibility Cat C/D 1/4 SM, and Circling visibility Cat C/D 1/2 SM.

MISSED APPROACH: Climb to 2000 direct COBIM and hold.

ATIS <b>118.325</b>	NEW ORLEANS APP CON <b>119.3 350.35</b>	HAMMOND TOWER ★ <b>120.575 (CTAF) 0</b>	GND CON <b>119.85</b>	CLNC DEL <b>119.3</b> (When twr closed)
------------------------	--	--	--------------------------	---



	HEVOT	ZOPAD	ADAPE 2.8 NM to RW13	RW13	2000	COBIM
	1600	1600	540	540	↑	☀
	6 NM		1.5 NM	1.8 NM	1 NM	
CATEGORY	A	B	C	D		
LNAV MDA	440-1	394 (400-1)	440-1 1/8	394 (400-1 1/8)		
<b>C</b> CIRCLING	500-1	454 (500-1)	620-1 1/2 574 (600-1 1/2)	920-2 3/4 874 (900-2 3/4)		



SC-4, 22 FEB 2024 to 21 MAR 2024

SC-4, 22 FEB 2024 to 21 MAR 2024


WAAS CH <b>45818</b> <b>W18A</b>	APP CRS <b>180°</b>	Rwy ldg TDZE Apt Elev	<b>5001</b> <b>44</b> <b>46</b>
--	------------------------	-----------------------------	---------------------------------------

# RNAV (GPS) RWY 18

HAMMOND NORTHSHORE RGNL (HDC)

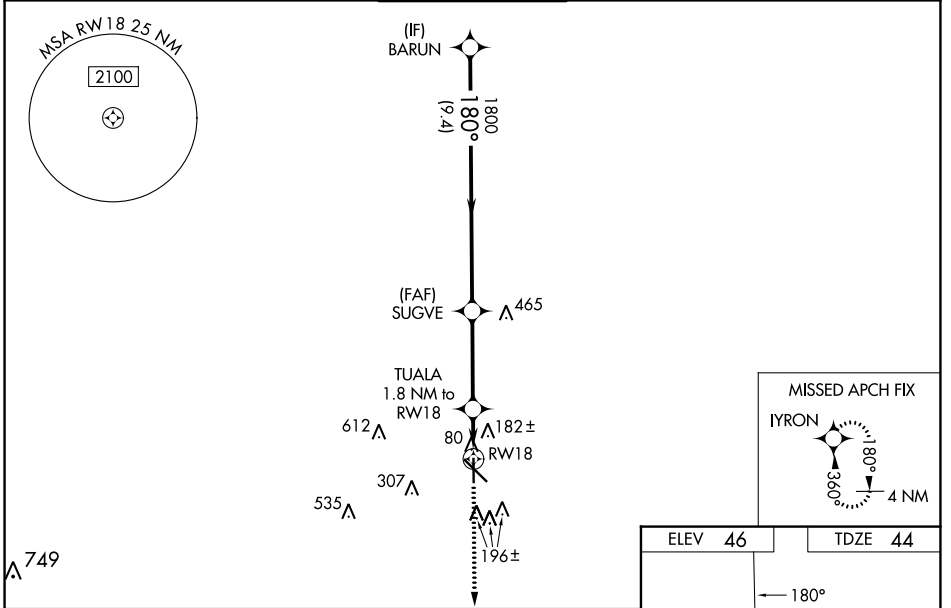
RNP APCH - GPS.

▼ Baro-VNAV and VDP NA when using Louis Armstrong New Orleans Intl altimeter setting.  
 ▲ When local altimeter setting not received, use Louis Armstrong New Orleans Intl altimeter setting and increase LPV DA to 339 feet; increase LNAV/VNAV DA to 555 feet and all visibilities ¼ SM. Increase all MDAs 100 feet and LNAV visibility Cat C/D ½ SM, and Circling visibility Cat C/D ½ SM. For inop ALS when using Louis Armstrong New Orleans Intl altimeter increase LPV all Cats visibility to ¾ SM; LNAV/VNAV all Cats visibility to 1 ¾ SM and LNAV Cats C/D visibility to 1 ¾ SM. For inop ALS increase LNAV/VNAV all Cats visibility to 1 ¼ SM and LNAV Cat C/D visibility to 1 ¼ SM.

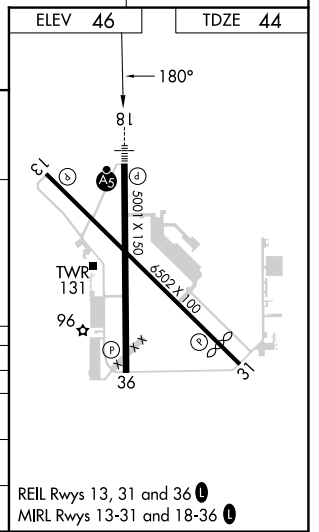
MALSR  


MISSED APPROACH:  
 Climb to 2200 direct IYRON and hold.

ATIS <b>118.325</b>	NEW ORLEANS APP CON <b>119.3 350.35</b>	HAMMOND TOWER ★ <b>120.575</b> (CTAF) 	GND CON <b>119.85</b>	CLNC DEL <b>119.3</b> (When twr closed)
------------------------	--	--	--------------------------	---



BARUN 1800 GP 3.00° TCH 52	SUGVE 1800 180°		TUALA 1.8 NM to RW18 660 1.1 NM to RW18 RW18	
	9.4 NM	3.5 NM	0.7 NM	1.1 NM
CATEGORY	A	B	C	D
LPV DA	250-½		206 (300-½)	
LNAV/VNAV DA	466-¾		422 (500-¾)	
LNAV MDA	460-½	416 (500-½)	460-¾	416 (500-¾)
CIRCLING	500-1	454 (500-1)	620-1½ 574 (600-1½)	920-2¾ 874 (900-2¾)



SC-4, 22 FEB 2024 to 21 MAR 2024

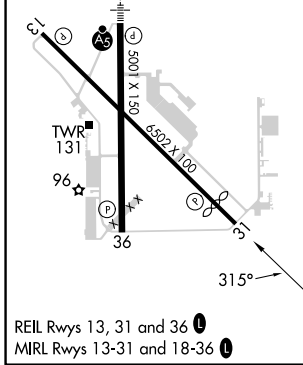
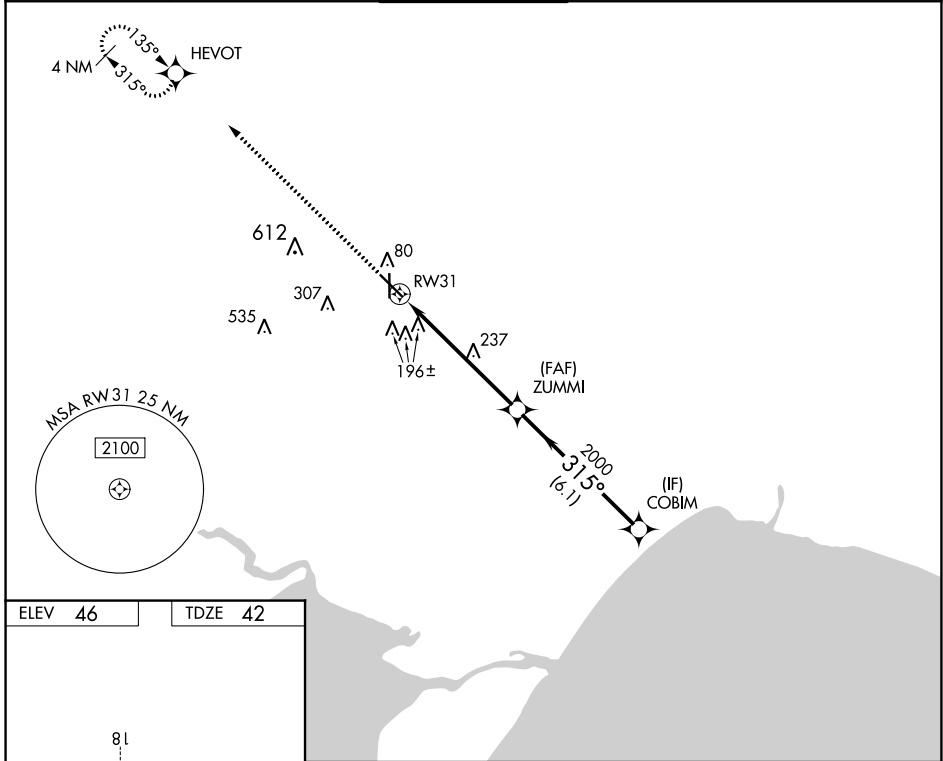
SC-4, 22 FEB 2024 to 21 MAR 2024

APP CRS	Rwy Idg	<b>5812</b>
<b>315°</b>	TDZE	<b>42</b>
	Apt Elev	<b>46</b>

# RNAV (GPS) RWY 31

HAMMOND NORTHSORE RGNL (HDC)

RNP APCH - GPS.		<p><b>▼</b> Rwy 31 helicopter visibility reduction below <math>\frac{3}{4}</math> SM NA. VDP NA when using Louis Armstrong New Orleans Intl altimeter setting. When local altimeter setting not received, use Louis Armstrong New Orleans Intl altimeter setting and increase all MDAs 100 feet and LNAV visibility Cat C/D <math>\frac{1}{4}</math> SM, and Circling visibility Cat C/D <math>\frac{1}{2}</math> SM.</p>		<p>MISSED APPROACH: Climb to 2000 direct HEVOT and hold.</p>	
ATIS	NEW ORLEANS APP CON	<b>HAMMOND TOWER ★</b>	GND CON	CLNC DEL	
<b>118.325</b>	<b>119.3 350.35</b>	<b>120.575 (CTAF) 0</b>	<b>119.85</b>	<b>119.3</b>	
				(When twr closed)	



ELEV 46	TDZE 42				
2000	HEVOT	ZUMMI	COBIM		
1.2 NM	1.2 NM to RWY 31	4.8 NM	6.1 NM		
315°	315°	315°			
3.05°	TCH 50	VGSi and descent angles not coincident (VGSi Angle 3.30/TCH 56).			
CATEGORY	A	B	C	D	
LNAV MDA	500-1	458 (500-1)	500-1 $\frac{3}{8}$	458 (500-1 $\frac{3}{8}$ )	
CIRCLING	500-1	454 (500-1)	620-1 $\frac{1}{2}$ 574 (600-1 $\frac{1}{2}$ )	920-2 $\frac{3}{4}$ 874 (900-2 $\frac{3}{4}$ )	

SC-4, 22 FEB 2024 to 21 MAR 2024

SC-4, 22 FEB 2024 to 21 MAR 2024

WAAS CH <b>42718</b> <b>W36A</b>	APP CRS <b>360°</b>	Rwy ldg TDZE Apt Elev	<b>5001</b> <b>42</b> <b>46</b>
--	------------------------	-----------------------------	---------------------------------------

# RNAV (GPS) RWY 36

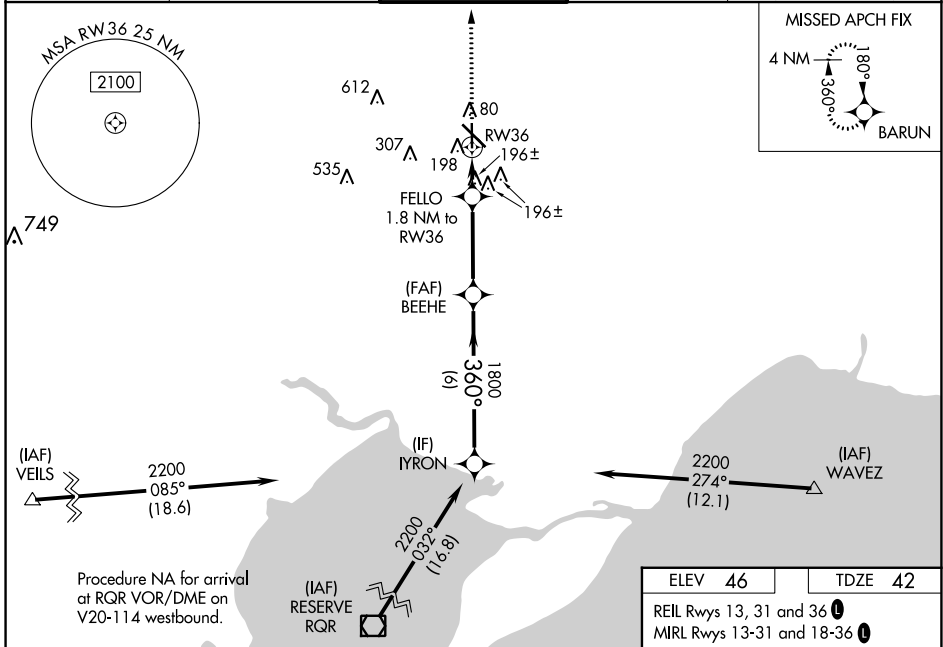
HAMMOND NORTHSORE RGNL (HDC)

RNP APCH - GPS.

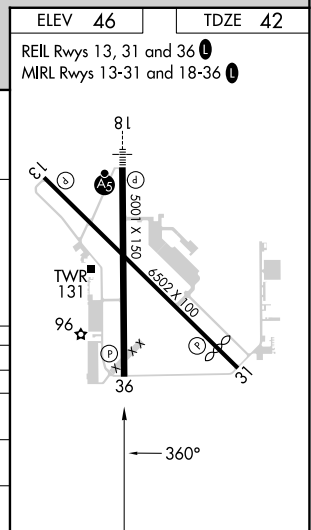
**⚠** Baro-VNAV and VDP NA when using Louis Armstrong New Orleans Intl altimeter setting. Rwy 36 helicopter visibility reduction below 3/4 SM NA. For uncompensated Baro-VNAV systems, LNAV/VNAV NA below -15°C or above 54°C. When local altimeter setting not received, use Louis Armstrong New Orleans Intl altimeter setting and increase LPV DA to 374 feet and all visibilities 1/4 SM; increase LNAV/VNAV DA to 528 feet and all visibilities 1/4 SM; increase all MDAs 100 feet and LNAV visibility Cat C/D 1/4 SM, and Circling visibility Cat C/D 1/2 SM.

**MISSED APPROACH:**  
Climb to 1800 direct BARUN and hold.

ATIS <b>118.325</b>	NEW ORLEANS APP CON <b>119.3 350.35</b>	HAMMOND TOWER ★ <b>120.575</b> (CTAF) <b>0</b>	GND CON <b>119.85</b>	CLNC DEL <b>119.3</b> (When twr closed)
------------------------	--	---	--------------------------	---



	YRONS	BEEHE	FELLO	RWY 36
	2200	1800	1800	1800
	360°	180°	360°	
	6 NM	3.5 NM	0.6 NM	1.2 NM
GP 3.00° TCH 52				
CATEGORY	A	B	C	D
LPV DA		292-3/4	250 (300-3/4)	
LNAV/VNAV DA		446-1 1/8	404 (400-1 1/8)	
LNAV MDA	460-1	418 (500-1)	460-1 1/8	418 (500-1 1/8)
<b>C</b> CIRCLING	500-1	454 (500-1)	620-1 1/2 574 (600-1 1/2)	920-2 3/4 874 (900-2 3/4)



SC-4, 22 FEB 2024 to 21 MAR 2024

SC-4, 22 FEB 2024 to 21 MAR 2024