


LOC/DME I-GVL 110.55 Chan 42 (Y)	APP CRS 044°	Rwy Idg 5370 TDZE 1275 Apt Elev 1277
--	------------------------	---

ILS or LOC RWY 5

LEE GILMER MEML (GVL)

DME required.
RADAR required for procedure entry.


⚠ Circling Rwy 11, 29 NA at night.
For inop ALS increase S-LOC 5 Cats C and D visibility to 1 SM.

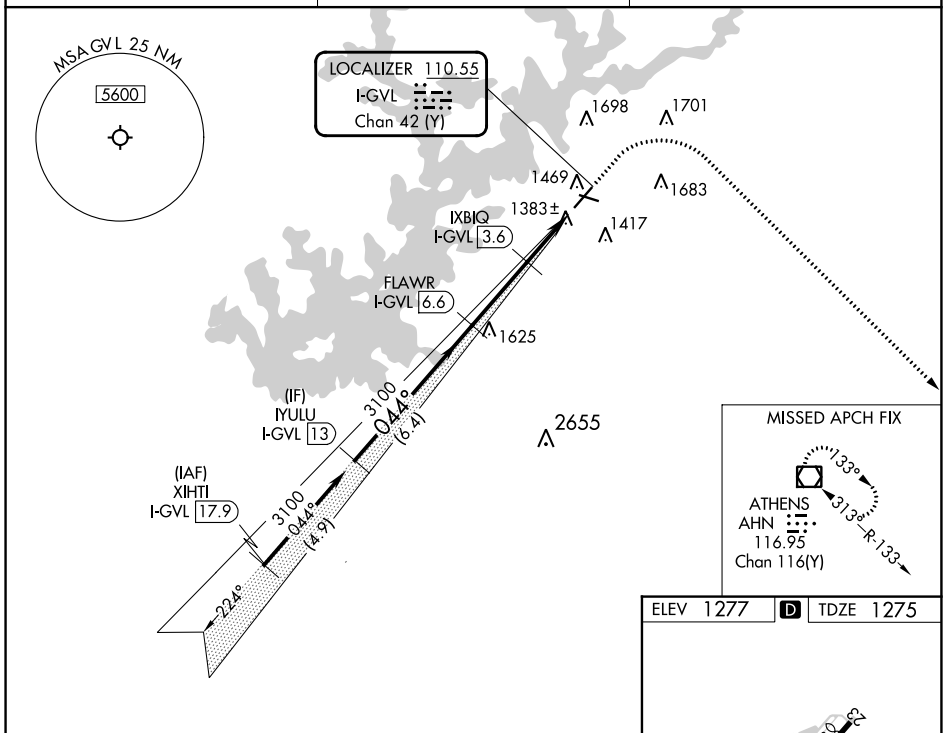
MALSR 

MISSED APPROACH: Climb to 2000 then climbing right turn to 3100 direct AHN VOR/DME and hold.

ASOS
126.475

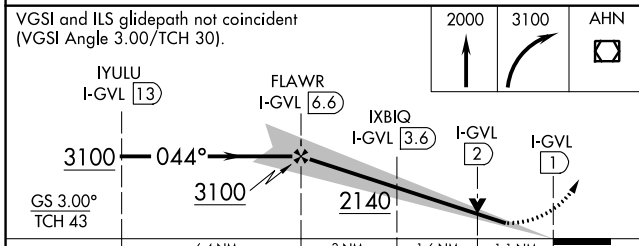
ATLANTA APP CON*
132.475 291.1

UNICOM
123.075 (CTAF) 

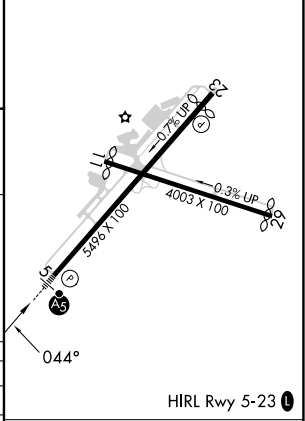


SE-4, 22 FEB 2024 to 21 MAR 2024

SE-4, 22 FEB 2024 to 21 MAR 2024



ELEV 1277  TDZE 1275



CATEGORY	A	B	C	D
S-ILS 5	1475-½ 200 (200-½)			
S-LOC 5	1640-½	365 (400-½)	1640-⅝	365 (400-⅝)
CIRCLING	1780-1 503 (600-1)	2000-1 723 (800-1)	2000-2 723 (800-2)	2020-2½ 743 (800-2½)

FAF to MAP 5.6 NM					
Knots	60	90	120	150	180
Min:Sec	5:36	3:44	2:48	2:14	1:52

WAAS CH 77605 W23A	APP CRS 224°	Rwy Idg 5100 TDZE 1274 Apt Elev 1277
--	------------------------	---

RNAV (GPS) RWY 23

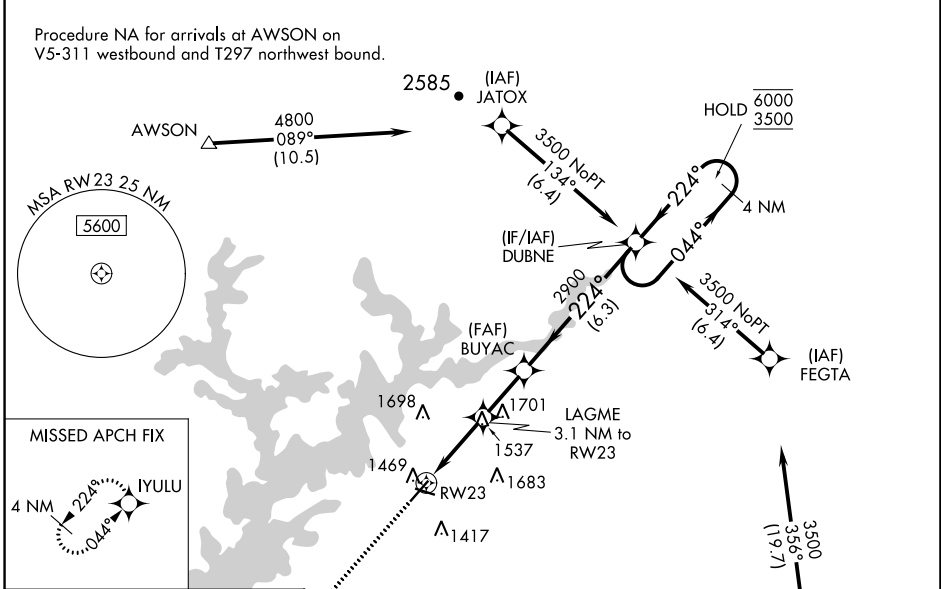
LEE GILMER MEML (GVL)

RNP APCH - GPS.

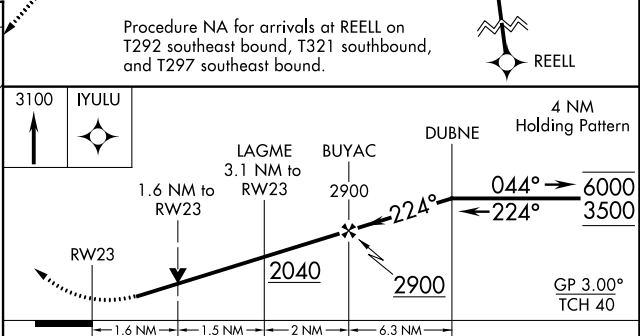
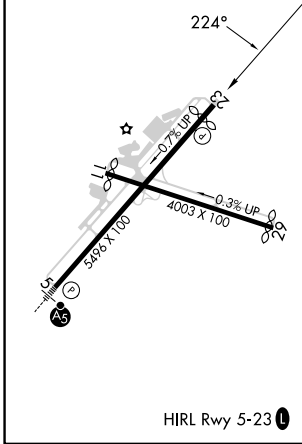
⚠ Circling Rwy 11, 29 NA at night. Rwy 23 helicopter visibility reduction below 3/4 SM NA. For uncompensated Baro-VNAV systems, LNAV/VNAV NA below -6°C or above 54°C.

MISSED APPROACH:
Climb to 3100 direct IYULU and hold.

ASOS 126.475	ATLANTA APP CON* 132.475 291.1	UNICOM 123.075 (CTAF) 0
------------------------	--	-----------------------------------



ELEV 1277	D	TDZE 1274
-----------	----------	-----------



CATEGORY	A	B	C	D
LPV DA		1541-7/8	267 (300-7/8)	
LNAV/VNAV DA		1637-1	363 (400-1)	
LNAV MDA	1800-1	526 (600-1)	1800-1½	526 (600-1½)
CIRCLING	1800-1 523 (600-1)	2000-1 723 (800-1)	2000-2 723 (800-2)	2020-2½ 743 (800-2½)

SE-4, 22 FEB 2024 to 21 MAR 2024

SE-4, 22 FEB 2024 to 21 MAR 2024

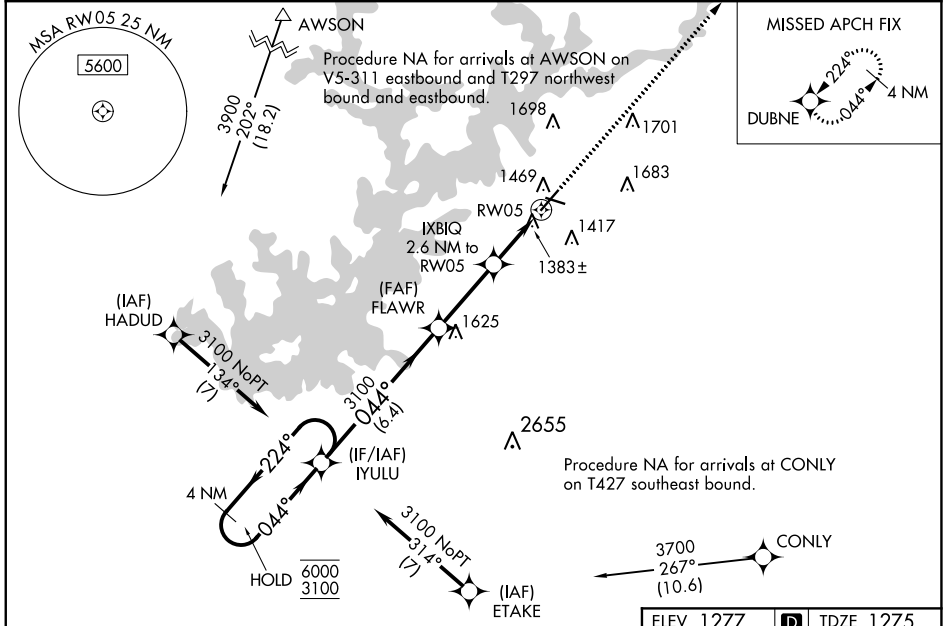
WAAS CH 42605 W05A	APP CRS 044°	Rwy Idg 5370 TDZE 1275 Apt Elev 1277
--	------------------------	---

RNAV (GPS) RWY 5

LEE GILMER MEML (GVL)

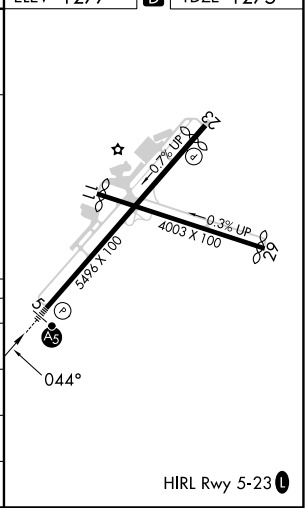
RNP APCH - GPS.	MALSRL 	MISSED APPROACH: Climb to 3500 direct DUBNE and hold.
 Circling to Rwy 11, 29 NA at night. For uncompensated Baro-VNAV systems, LNAV/VNAV NA below -6°C or above 54°C. For inop ALS, increase LNAV/VNAV all Cats visibility to ½ SM, increase LNAV Cats C and D visibility to 1 SM.		

ASOS 126.475	ATLANTA APP CON* 132.475 291.1	UNICOM 123.075 (CTAF)
------------------------	--	---------------------------------



VGSI and RNAV glidepath not coincident (VGSI Angle 3.00/TCH 30).

4 NM Holding Pattern	IYULU	FLAWR	3500 DUBNE	
6000 ← 224°	3100 → 044°	3100		
GP 3.00°	3100	IXBIQ 2.6 NM to RWY 5		
TCH 43		1.1 NM to RWY 5		
	6.4 NM	3 NM	1.6 NM 1.1 NM	
CATEGORY	A	B	C	D
LPV DA		1475-½	200 (200-½)	
LNAV/VNAV DA		1551-½	276 (300-½)	
LNAV MDA	1640-½	365 (400-½)	1640-5/8	365 (400-5/8)
CIRCLING	1780-1 503 (600-1)	2000-1 723 (800-1)	2000-2 723 (800-2)	2020-2½ 743 (800-2½)



SE-4, 22 FEB 2024 to 21 MAR 2024

SE-4, 22 FEB 2024 to 21 MAR 2024