

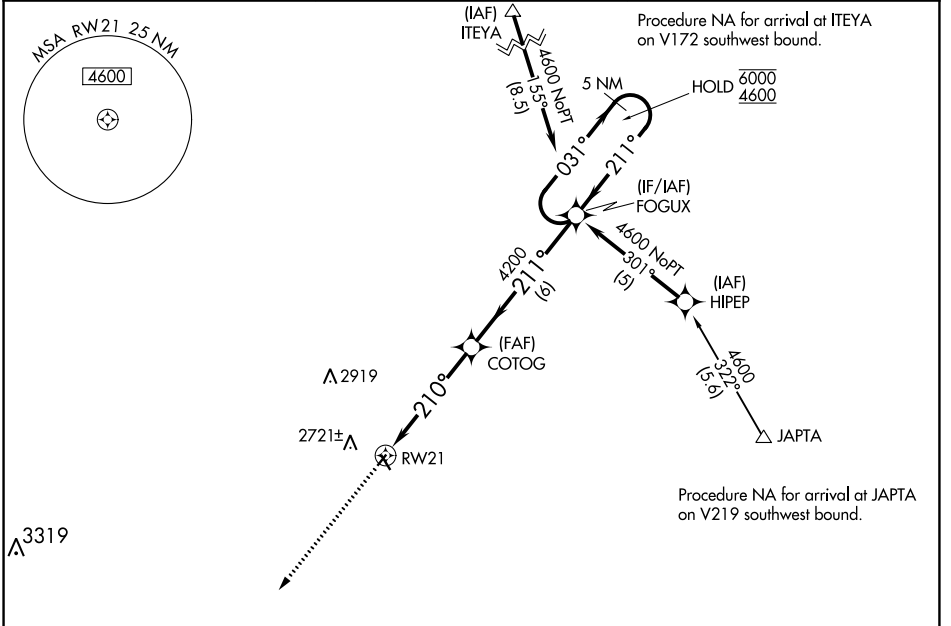
APP CRS	Rwy Idg	2599
210°	TDZE	2559
	Apt Elev	2559

RNAV (GPS) RWY 21

GOTHENBURG MUNI (GTE)

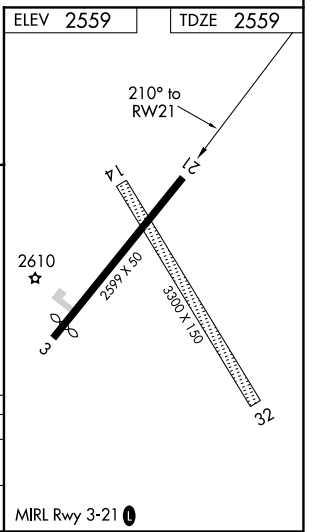
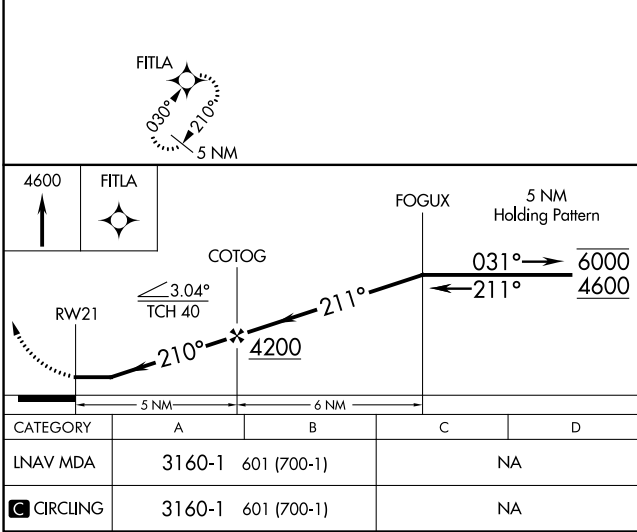
RNP APCH:	<p>▼ Circling NA to Rwy 14 and 32. Procedure NA at night. Rwy 21 helicopter visibility reduction below 1 SM NA. Use Lexington altimeter setting; when not received, use North Platte altimeter setting and increase all MDA 40 feet.</p> <p>▲ NA MISSED APPROACH: Climb to 4600 direct FITLA and hold.</p>
-----------	--

LXN AWOS-3 121.025	DENVER CENTER 132.7 226.675	UNICOM 122.8 (CTAF) 0
------------------------------	---------------------------------------	---------------------------------



NC-2, 08 OCT 2020 to 05 NOV 2020

NC-2, 08 OCT 2020 to 05 NOV 2020



RNAV (GPS) RWY 3

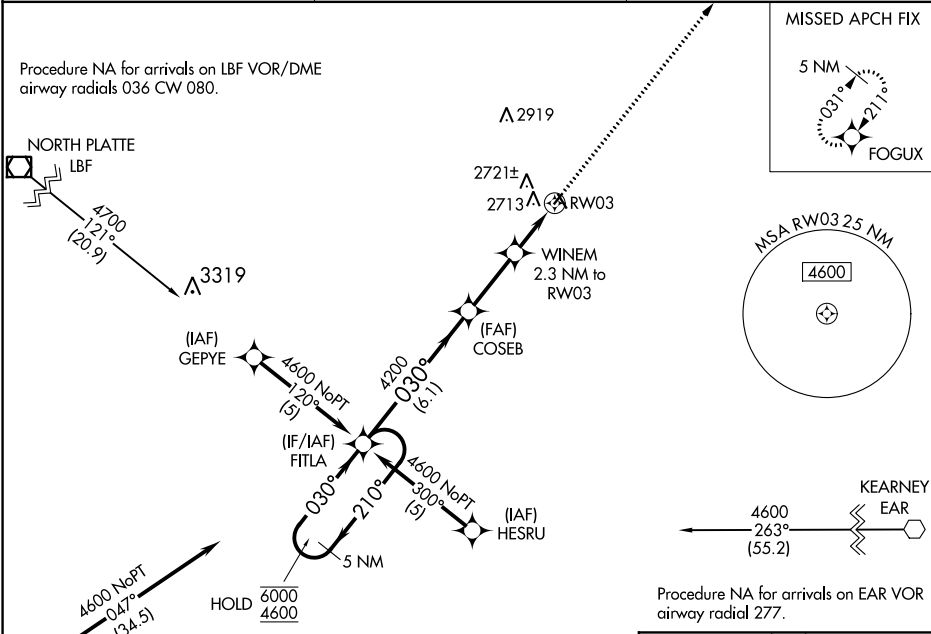
GOTHENBURG MUNI (GTE)

APP CRS	Rwy Idg	2529
030°	TDZE	2559
	Apt Elev	2559

RNP APCH.
 ⚠ NA Circling NA to Rwy 14 and 32. Procedure NA at night. Rwy 3 helicopter visibility reduction below 1 SM NA. Use Lexington altimeter setting; when not received, use North Platte altimeter setting and increase all MDA 40 feet.

MISSED APPROACH: Climb to 4600 direct FOGUX and hold.

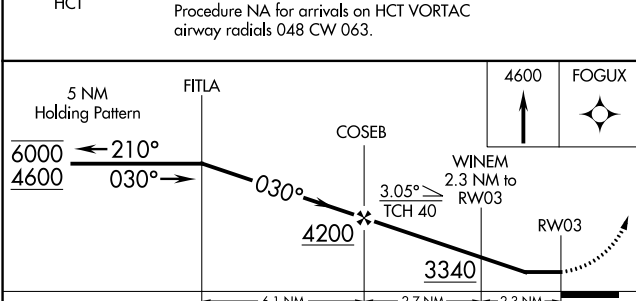
LXN AWO3-3 121.025	DENVER CENTER 132.7 226.675	UNICOM 122.8 (CTAF) 0
------------------------------	---------------------------------------	---------------------------------



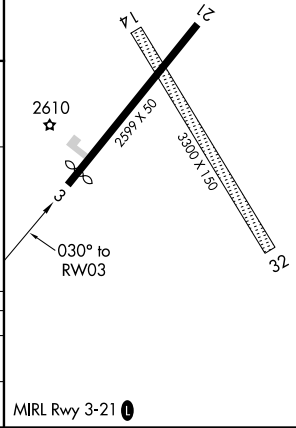
NC-2, 08 OCT 2020 to 05 NOV 2020

NC-2, 08 OCT 2020 to 05 NOV 2020

ELEV	2559	TDZE	2559
------	-------------	------	-------------



ELEV	2559	TDZE	2559
------	-------------	------	-------------



CATEGORY	A	B	C	D
LNVA MDA	3080-1	521 (600-1)		NA
C CIRCLING	3140-1 581 (600-1)	3180-1 621 (700-1)		NA

VOR OZB 109.0	APP CRS 287°	Rwy Idg TDZE Apt Elev N/A N/A 2559
-------------------------	------------------------	--

VOR-A

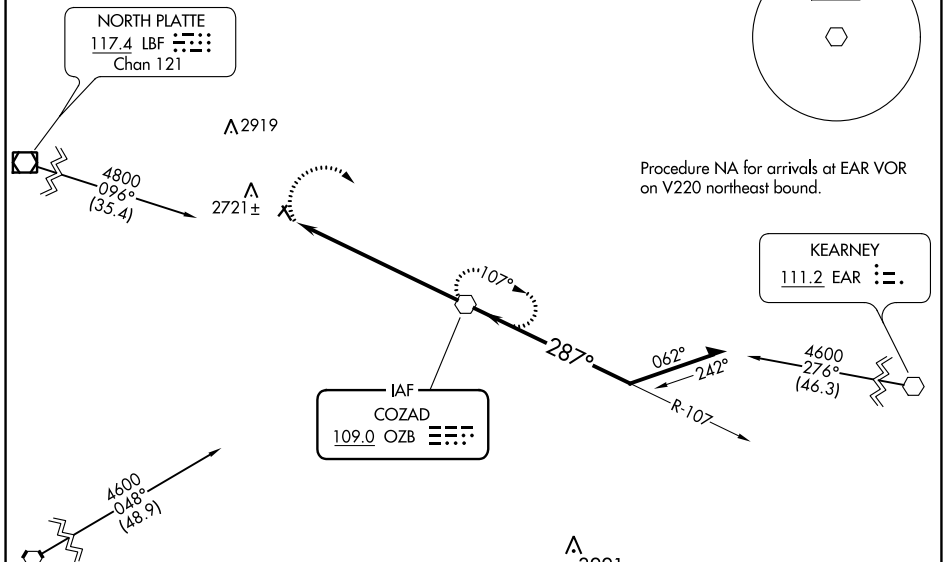
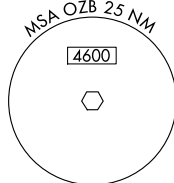
GOTHENBURG MUNI (GTE)

NA Circling NA to Rwys 14 and 32. Procedure NA at night. Use Lexington altimeter setting; when not received, use North Platte altimeter setting and increase all MDA 40 feet.

MISSED APPROACH: Climbing right turn to 4300 direct OZB VOR and hold.

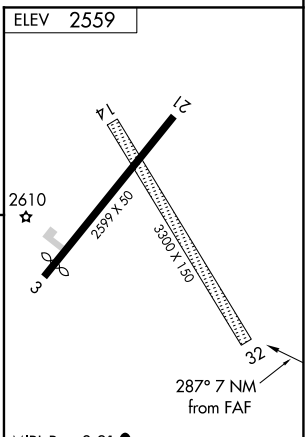
LXN AWOS-3 121.025	DENVER CENTER 132.7 226.675	UNICOM 122.8 (CTAF)
------------------------------	---------------------------------------	-------------------------------

Procedure NA for arrival on LBF VOR/DME airway radials 062 CW 080.



NC-2, 08 OCT 2020 to 05 NOV 2020

NC-2, 08 OCT 2020 to 05 NOV 2020



4300 OZB	OZB VOR	Remain within 10 NM
	3500	4600
7 NM		

CATEGORY	A	B	C	D	FAF to MAP 7 NM					
CIRCLING	3120-1 561 (600-1)	3180-1 621 (700-1)	NA		Knots	60	90	120	150	180
					Min:Sec	7:00	4:40	3:30	2:48	2:20

VOR-A