

LOC I-SGZ 109.9	APP CRS 002°	Rwy Idg 8201	TDZE 684
		Apt Elev 695	

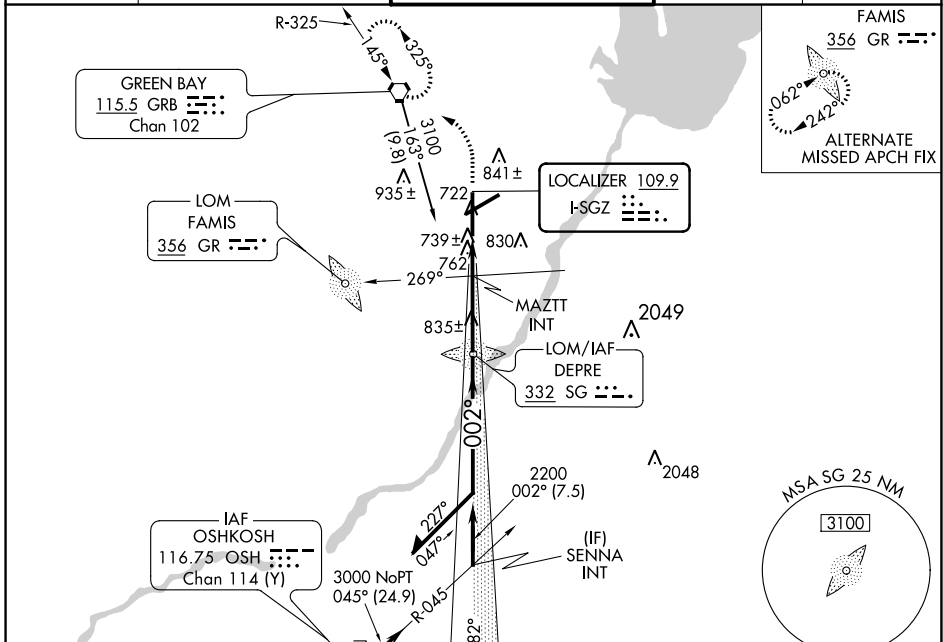
ILS or LOC RWY 36

GREEN BAY/AUSTIN STRAUBEL INTL (GRB)

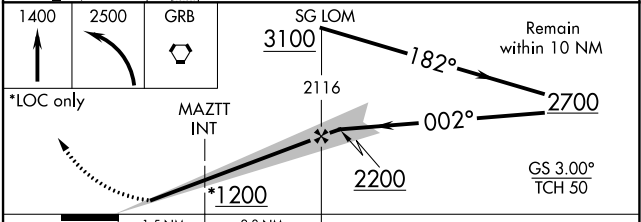
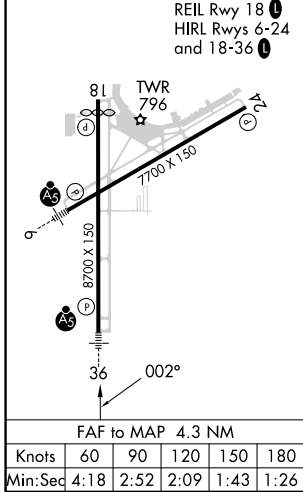
NA For inop ALS, increase S-LOC 36 Cats C/D visibility to 1 $\frac{1}{2}$ SM. **MALSR** MISSED APPROACH: Climb to 1400 then climbing left turn to 2500 direct GRB VORTAC and hold.

ASR **RVR 1800 authorized with the use of FD or AP or HUD to DA.

ATIS 124.1	GREEN BAY APP CON * 119.4 338.2	GREEN BAY TOWER * 118.7 (CTAF) 257.8	GND CON 121.9	CLNC DEL 121.75
----------------------	---	--	-------------------------	---------------------------



ELEV 695	D TDZE 684
----------	-------------------



CATEGORY	SG LOM			
	A	B	C	D
S-ILS 36	**884/24 200 (200- $\frac{1}{2}$)			
S-LOC 36	1200/24	516 (600- $\frac{1}{2}$)	1200/55	516 (600-1)
C CIRCLING	1200-1	505 (600-1)	1300-1 $\frac{3}{4}$ 605 (700-1 $\frac{3}{4}$)	1300-2 605 (700-2)
MAZTT FIX MINIMUMS				
S-LOC 36	1020/24	336 (400- $\frac{1}{2}$)	1020/26	336 (400- $\frac{1}{2}$)
C CIRCLING	1200-1	505 (600-1)	1200-1 $\frac{1}{2}$ 505 (600- $\frac{1}{2}$)	1260-2 565 (600-2)

EC-3, 22 FEB 2024 to 21 MAR 2024

EC-3, 22 FEB 2024 to 21 MAR 2024

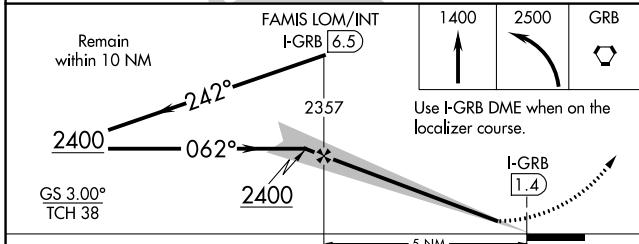
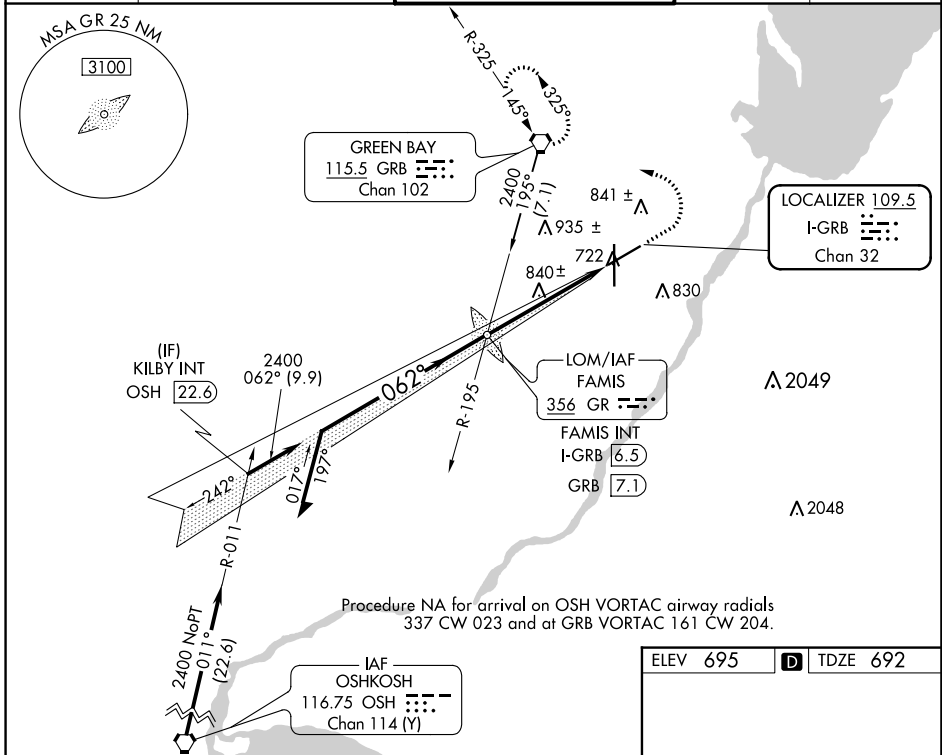
LOC/DME I-GRB 109.5 Chan 32	APP CRS 062°	Rwy Idg TDZE Apf Elev	7699 692 695
---	------------------------	-----------------------------	---

ILS or LOC RWY 6

GREEN BAY/AUSTIN STRAUBEL INTL (GRB)

⚠ For inop ALS, increase S-LOC 6 Cats C/D visibility to 1 3/8 SM. *RVR 1800 authorized with the use of FD or AP or HUD to DA. ASR	MALSR 	MISSED APPROACH: Climb to 1400 then climbing left turn to 2500 direct GRB VORTAC and hold.
--	------------------	---

ATIS 124.1	GREEN BAY APP CON* 119.4 338.2	GREEN BAY TOWER* 118.7(CTAF) 0 257.8	GND CON 121.9	CLNC DEL 121.75
-----------------------------	---	---	--------------------------------	----------------------------------



ELEV 695	D	TDZE 692
-----------------	----------	-----------------

81 TWR 796

7700 X 150

062°

8700 X 150

36

REIL Rwy 18

HIRL Rwys 6-24 and 18-36

FAF to MAP 5 NM

Knots	60	90	120	150	180
Min:Sec	5:00	3:20	2:30	2:00	1:40

CATEGORY	A	B	C	D
S-ILS 6 *	892/24 200 (200-1/2)			
S-LOC 6	1200/24 508 (600-1/2)	1200/55 508 (600-1)		
CIRCLING	1200-1 505 (600-1)	1300-1 3/4 605 (700-1 3/4)	1300-2 605 (700-2)	

EC-3, 22 FEB 2024 to 21 MAR 2024

EC-3, 22 FEB 2024 to 21 MAR 2024

LOC/DME I-GRB 109.5 Chan 32	APP CRS 242°	Rwy ldg TDZE Apt Elev	7699 682 695
--	------------------------	-----------------------------	---

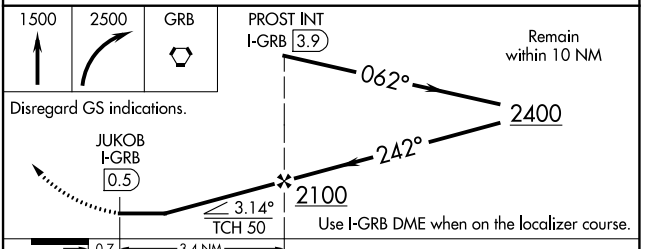
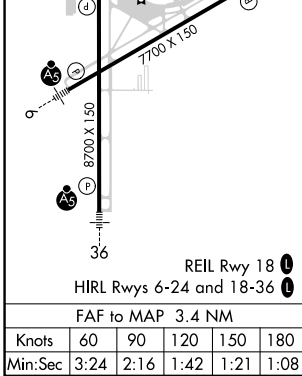
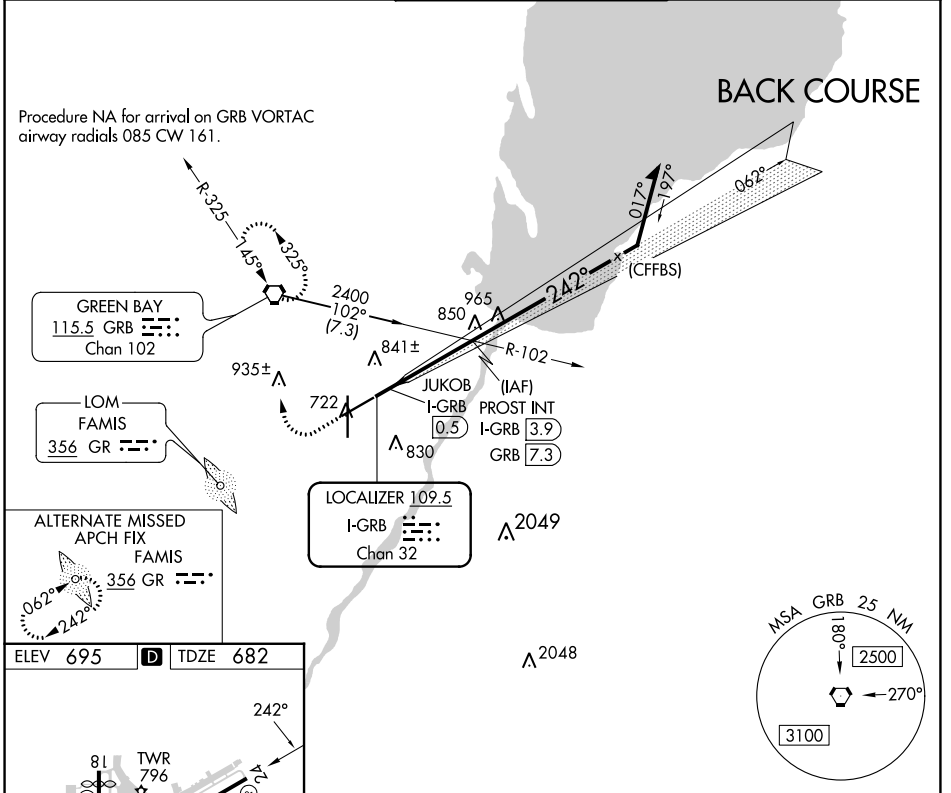
LOC BC RWY 24

GREEN BAY/AUSTIN STRAUBEL INTL (GRB)

ASR

MISSED APPROACH: Climb to 1500 then climbing right turn to 2500 direct GRB VORTAC and hold.

ATIS 124.1	GREEN BAY APP CON* 119.4 338.2	GREEN BAY TOWER* 118.7 (CTAF) 257.8	GND CON 121.9	CLNC DEL 121.75
----------------------	--	---	-------------------------	---------------------------



CATEGORY	A	B	C	D
S-24	1100-1 418 (500-1)		1100-1½ 418 (500-1½)	
C CIRCLING	1200-1 505 (600-1)		1300-1¾ 605 (700-1¾)	1300-2 605 (700-2)

EC-3, 22 FEB 2024 to 21 MAR 2024

EC-3, 22 FEB 2024 to 21 MAR 2024

WAAS CH 42802 W18A	APP CRS 182°	Rwy Idg TDZE Apt Elev	8201 695 695
--	------------------------	-----------------------------	---

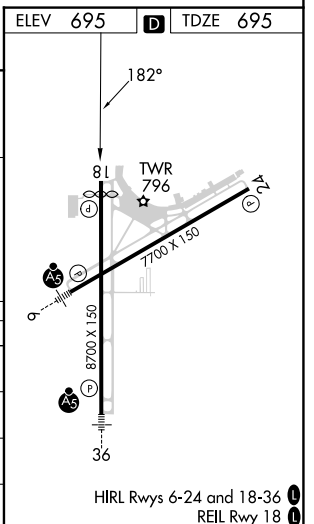
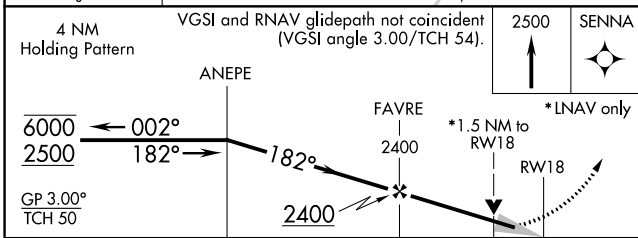
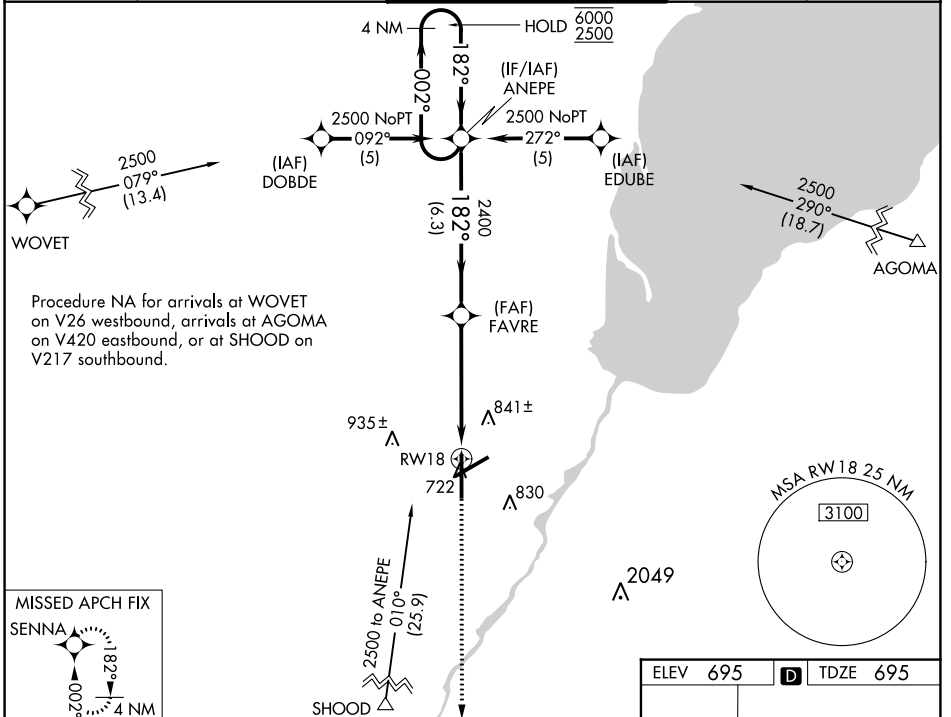
RNAV (GPS) RWY 18

GREEN BAY/AUSTIN STRAUBEL INTL (GRB)

RNP APCH. For uncompensated Baro-VNAV systems, LNAV/VNAV NA below ASR -16° C or above 54° C.

MISSED APPROACH: Climb to 2500 direct SENNA and hold.

ATIS 124.1	GREEN BAY APP CON* 119.4 338.2	GREEN BAY TOWER* 118.7 (CTAF) 257.8	GND CON 121.9	CLNC DEL 121.75
----------------------	--	---	-------------------------	---------------------------



CATEGORY	A	B	C	D
LPV DA		979-7 ⁸	284 (300-7 ⁸)	
LNAV/VNAV DA		1187-13 ⁸	492 (500-13 ⁸)	
LNAV MDA	1220-1	525 (600-1)	1220-1 ¹ / ₂	525 (600-1 ¹ / ₂)
CIRCLING	1220-1	525 (600-1)	1300-1 ³ / ₄ 605 (700-1 ³ / ₄)	1300-2 605 (700-2)

EC-3, 22 FEB 2024 to 21 MAR 2024

EC-3, 22 FEB 2024 to 21 MAR 2024

WAAS CH 99515 W24A	APP CRS 242°	Rwy Idg TDZE Apt Elev	7699 681 695
--	------------------------	-----------------------------	---

RNAV (GPS) RWY 24

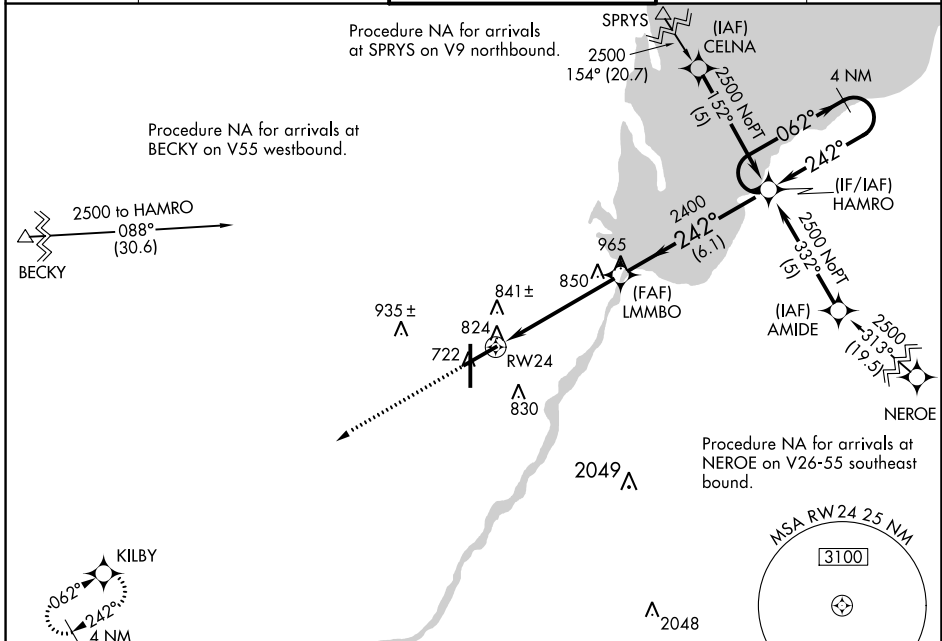
GREEN BAY/AUSTIN STRAUBEL INTL (G.R.B)

RNP APCH-GPS.

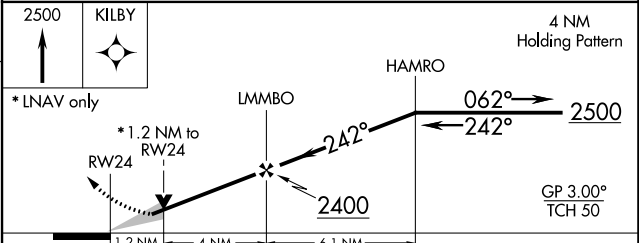
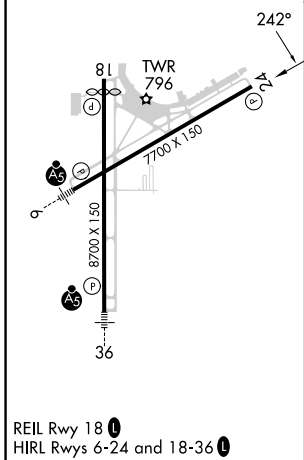
ASR For uncompensated Baro-VNAV systems, LNAV/VNAV NA below -16° C or above 54°C.

MISSED APPROACH: Climb to 2500 direct KILBY and hold.

ATIS 124.1	GREEN BAY APP CON * 119.4 338.2	GREEN BAY TOWER * 118.7 (CTAF) 257.8	GND CON 121.9	CLNC DEL 121.75
----------------------	---	--	-------------------------	---------------------------



ELEV 695	D	TDZE 681
----------	----------	----------



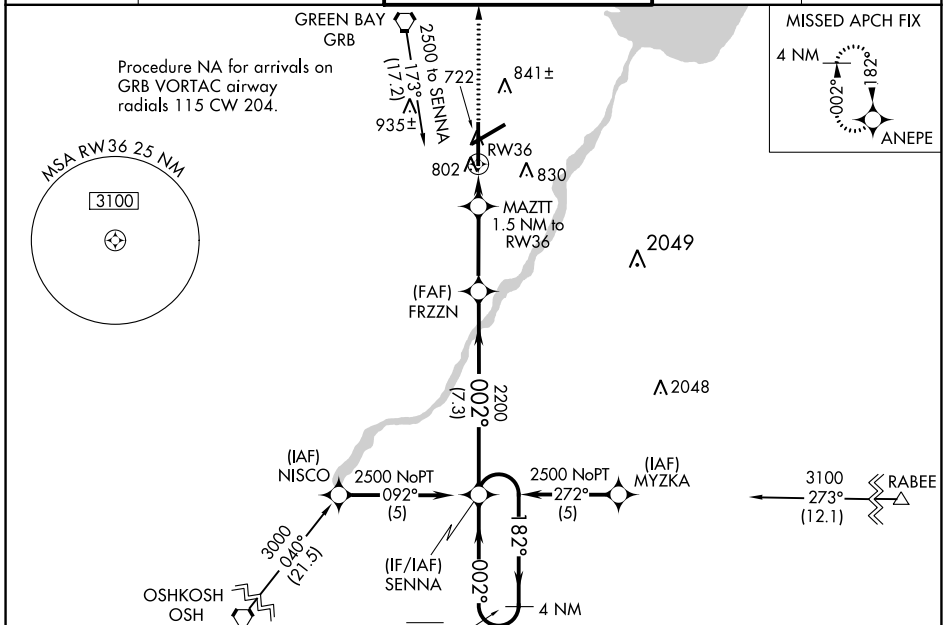
CATEGORY	A	B	C	D
LPV DA	970-1		289 (300-1)	
LNAV/VNAV DA	1143-1½		462 (500-1½)	
LNAV MDA	1100-1	419 (500-1)	1100-1¼	419 (500-1¼)
C CIRCLING	1200-1	505 (600-1)	1300-1¾ 605 (700-1¾)	1300-2 605 (700-2)

WAAS CH 42902 W36A	APP CRS 002°	Rwy Idg 8201
		TDZE 684
		Apt Elev 695

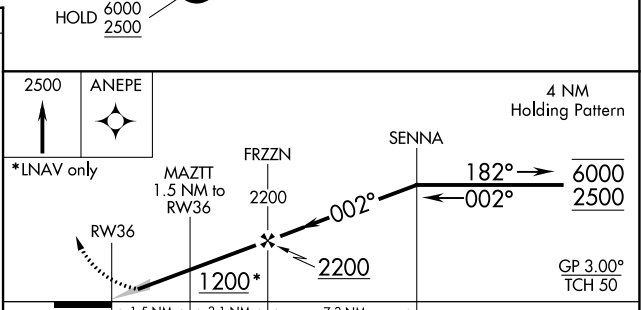
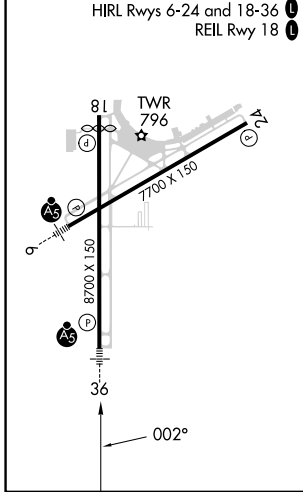
RNAV (GPS) RWY 36

GREEN BAY/AUSTIN STRAUBEL INTL (GRB)

RNP APCH.		MALSR		MISSED APPROACH: Climb to 2500 direct ANEPE and hold.	
ASR For uncompensated Baro-VNAV systems, LNAV/VNAV NA below -16°C or above 54°C. For inop ALS, increase LNAV/VNAV all Cats visibility to RVR 6000 and LNAV Cats C/D visibility to RVR 5500. ** RVR 1800 authorized with use of FD or AP or HUD to DA.		ATIS 124.1		GREEN BAY APP CON* 119.4 338.2	
		GREEN BAY TOWER* 118.7 (CTAF) 0 257.8		GND CON 121.9	
				CLNC DEL 121.75	



ELEV 695	D	TDZE 684
----------	---	----------



CATEGORY	A	B	C	D
LPV DA	884/24		200 (200-½)	
LNAV/VNAV DA	1097/40		413 (500-¾)	
LNAV MDA	1060/24	376 (400-½)	1060/35	376 (400-¾)
CIRCLING	1200-1	505 (600-1)	1300-1¾ 605 (700-1¾)	1300-2 605 (700-2)

EC-3, 22 FEB 2024 to 21 MAR 2024

EC-3, 22 FEB 2024 to 21 MAR 2024

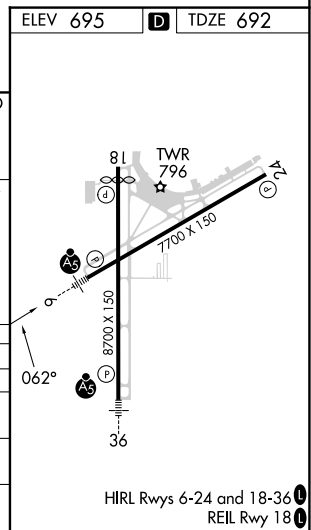
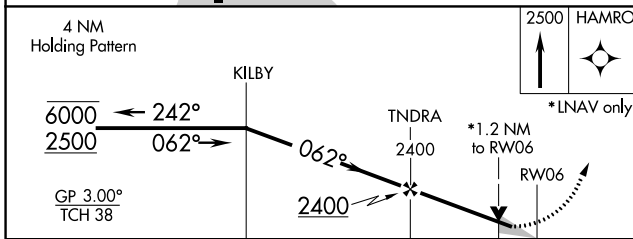
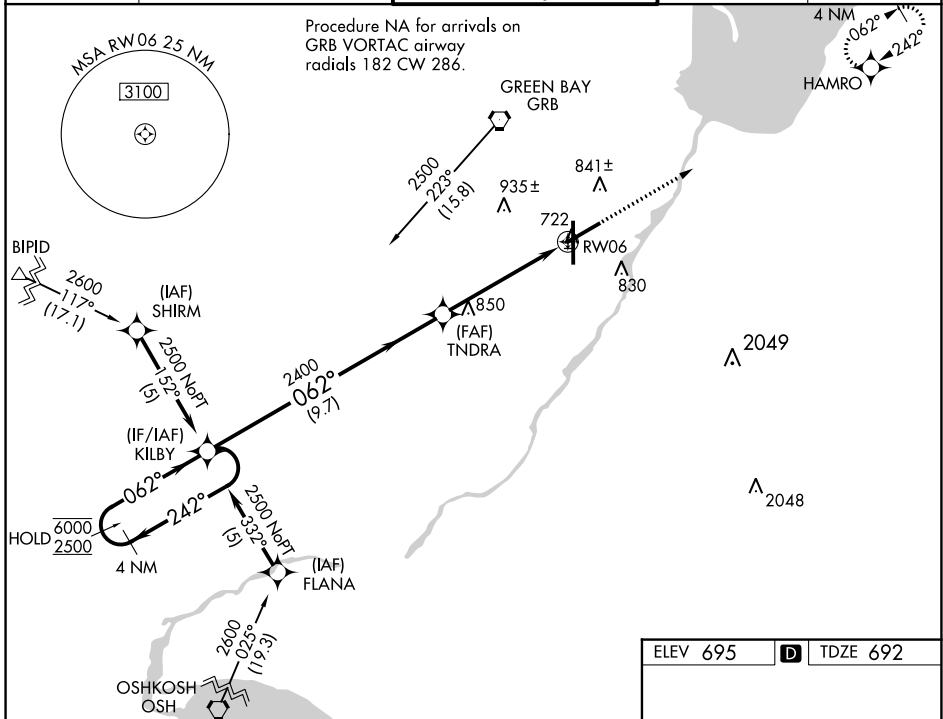
WAAS CH 63015 W06A	APP CRS 062°	Rwy Idg TDZE Apt Elev	7699 692 695
--	------------------------	-----------------------------	---

RNAV (GPS) RWY 6

GREEN BAY/AUSTIN STRAUBEL INTL (G.R.B)

RNP APCH.		MALSR AS	MISSED APPROACH: Climb to 2500 direct HAMRO and hold.
For uncompensated Baro-VNAV systems, LNAV/VNAV NA below -16°C or above 54°C. For inop ALS, increase LNAV/VNAV all Cats visibility to RVR 4500, and LNAV Cats C and D visibility to RVR 6000. **RVR 1800 authorized with use of FD or AP or HUD to DA			

ATIS 124.1	GREEN BAY APP CON* 119.4 338.2	GREEN BAY TOWER * 118.7 (CTAF) 257.8	GND CON 121.9	CLNC DEL 121.75
----------------------	--	--	-------------------------	---------------------------



CATEGORY	A	B	C	D
LPV DA**	892/24		200 (200-½)	
LNAV/VNAV DA	1000/24 308 (400-½)		1000/40 308 (400-¾)	
LNAV MDA	1100/24 408 (500-½)		1100/40 408 (500-¾)	
CIRCLING	1200-1 505 (600-1)		1300-1¾ 605 (700-1½) 1300-2 605 (700-2)	

EC-3, 22 FEB 2024 to 21 MAR 2024

EC-3, 22 FEB 2024 to 21 MAR 2024

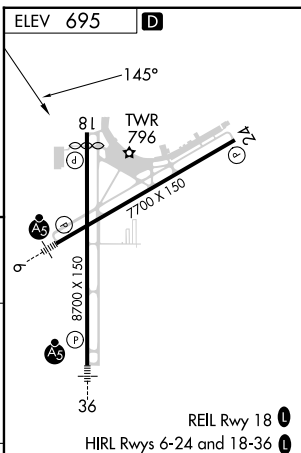
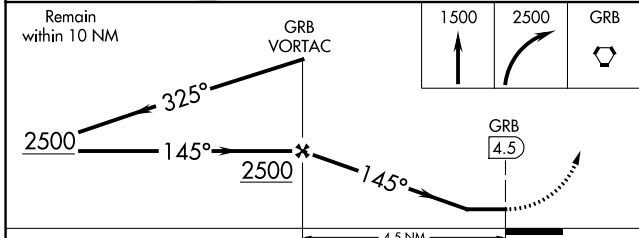
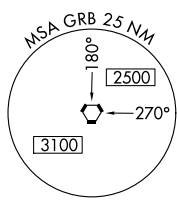
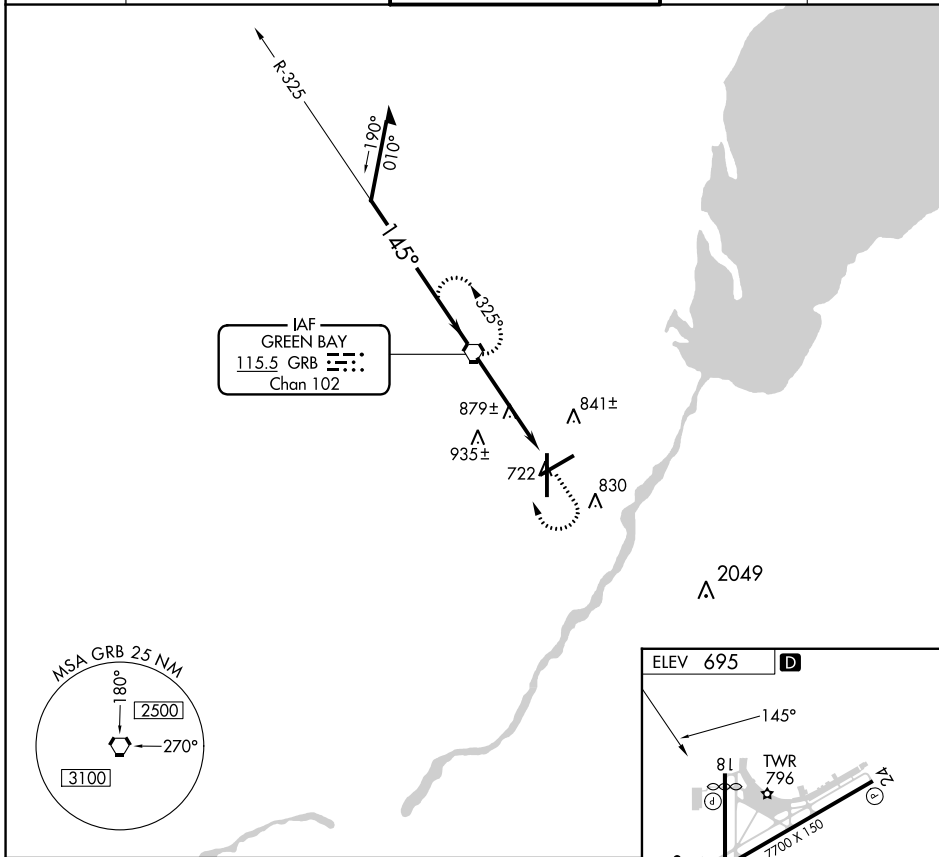
VORTAC GRB 115.5 Chan 102	APP CRS 145°	Rwy Idg TDZE Arprt Elev	N/A N/A 695
---	------------------------	-------------------------------	--

VOR-A

GREEN BAY/AUSTIN STRAUBEL INTL (GRB)

ASR MISSED APPROACH: Climb to 1500 then climbing right turn to 2500 direct GRB VORTAC and hold.

ATIS 124.1	GREEN BAY APP CON* 119.4 338.2	GREEN BAY TOWER* 118.7 (CTAF) 257.8	GND CON 121.9	CLNC DEL 121.75
----------------------	--	---	-------------------------	---------------------------



CATEGORY	A	B	C	D	FAF to MAP 4.5 NM					
CIRCLING	1200-1 505 (600-1)		1300-1 3/4 605 (700-1 3/4)	1300-2 605 (700-2)	Knots	60	90	120	150	180
					Min:Sec	4:30	3:00	2:15	1:48	1:30

EC-3, 22 FEB 2024 to 21 MAR 2024

EC-3, 22 FEB 2024 to 21 MAR 2024