

WAAS CH 86906 W18A	APP CRS 184°	Rwy Idg 5002 TDZE 842 Apt Elev 842
--	------------------------	---

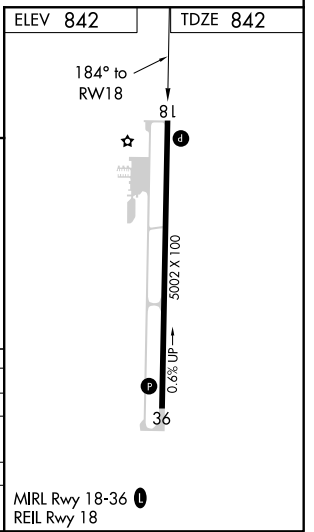
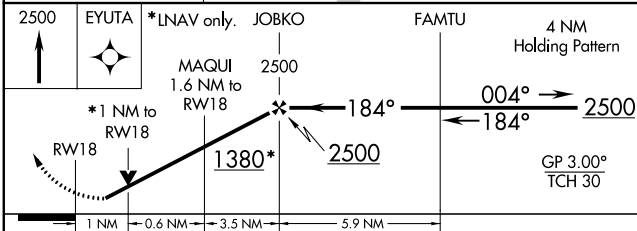
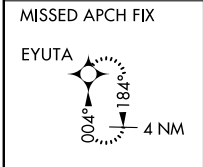
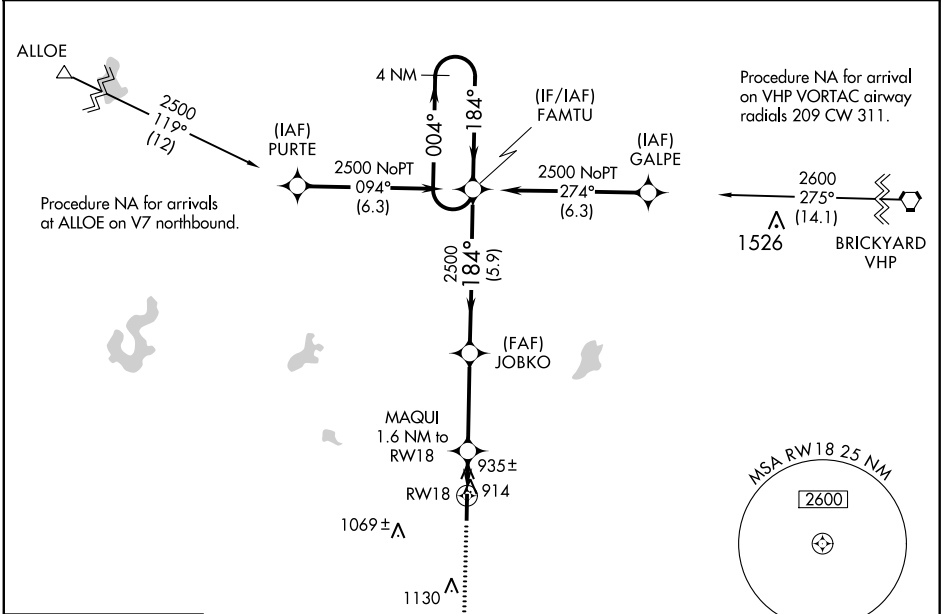
RNAV (GPS) RWY 18

PUTNAM COUNTY RGNL (GPC)

▼ For uncompensated Baro-VNAV systems, LNAV/VNAV NA below -1.6°C (4°F) or above 54°C (130°F). Rwy 18 helicopter visibility reduction below ¾ SM NA. DME/DME RNP-0.3 NA.

MISSED APPROACH:
Climb to 2500 direct EYUTA and hold.

AWOS-3PT 118.125	INDIANAPOLIS APP CON 119.05 317.8	UNICOM 122.8 (CTAF) 0
----------------------------	---	---------------------------------



CATEGORY	A	B	C	D
LPV DA		1107-7/8	265 (300-7/8)	
LNAV/VNAV DA		1106-7/8	264 (300-7/8)	
LNAV MDA		1200-1	358 (400-1)	
C CIRCLING	1280-1 438 (500-1)	1400-1 558 (600-1)	1480-1 3/4 638 (700-1 3/4)	1480-2 638 (700-2)

EC-2, 19 MAY 2022 to 16 JUN 2022

EC-2, 19 MAY 2022 to 16 JUN 2022

WAAS CH 40306 W36A	APP CRS 004°	Rwy Idg 5002 TDZE 829 Apt Elev 842
--	------------------------	---

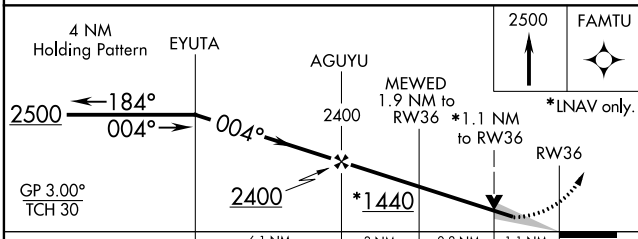
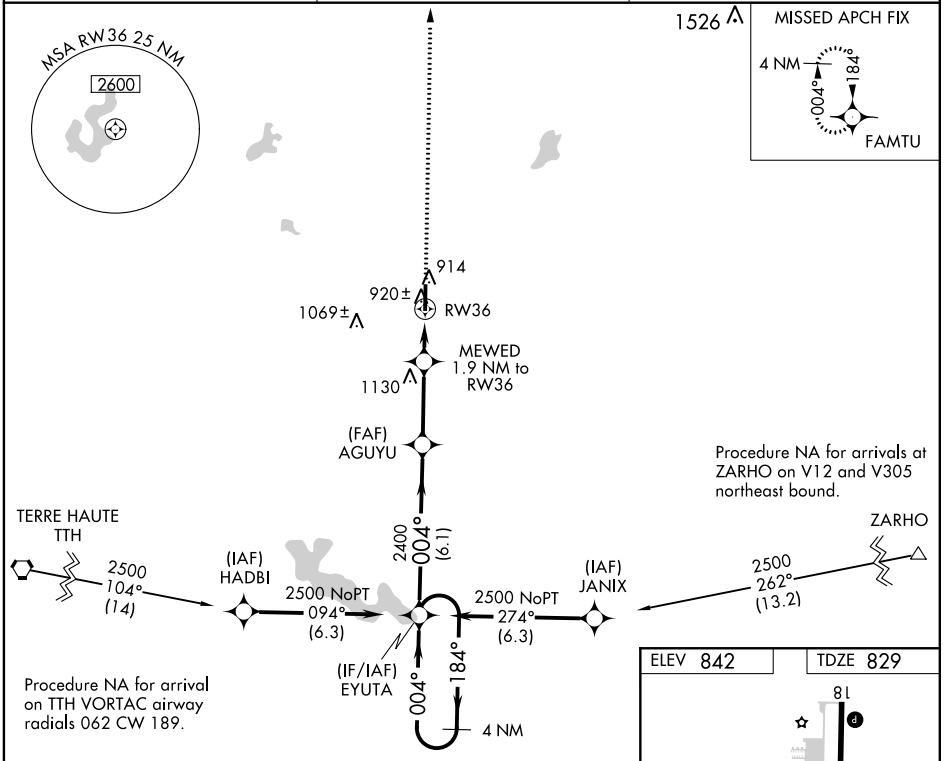
RNAV (GPS) RWY 36

PUTNAM COUNTY RGNL (GPC)

▼ For uncompensated Baro-VNAV systems, LNAV/VNAV NA below -16°C (4°F) or above 54°C (130°F). DME/DME RNP-0.3 NA.

MISSED APPROACH: Climb to 2500 direct FAMTU and hold.

AWOS-3PT 118.125	INDIANAPOLIS APP CON 119.05 317.8	UNICOM 122.8 (CTAF) ①
----------------------------	---	---------------------------------



ELEV 842	TDZE 829
----------	----------

81
5002 X 100
0.6% UP
36
004° to RW36

MIRL Rwy 18-36 ①
REIL Rwy 18

CATEGORY	A	B	C	D
LPV DA		1079- $\frac{7}{8}$	250 (300- $\frac{7}{8}$)	
LNAV/VNAV DA		1116-1	287 (300-1)	
LNAV MDA		1180-1	351 (400-1)	
② CIRCLING	1280-1 438 (500-1)	1400-1 558 (600-1)	1480-1 $\frac{3}{4}$ 638 (700- $\frac{3}{4}$)	1480-2 638 (700-2)

EC-2, 19 MAY 2022 to 16 JUN 2022

EC-2, 19 MAY 2022 to 16 JUN 2022

GREENCASTLE, INDIANA

AL-6336 (FAA)

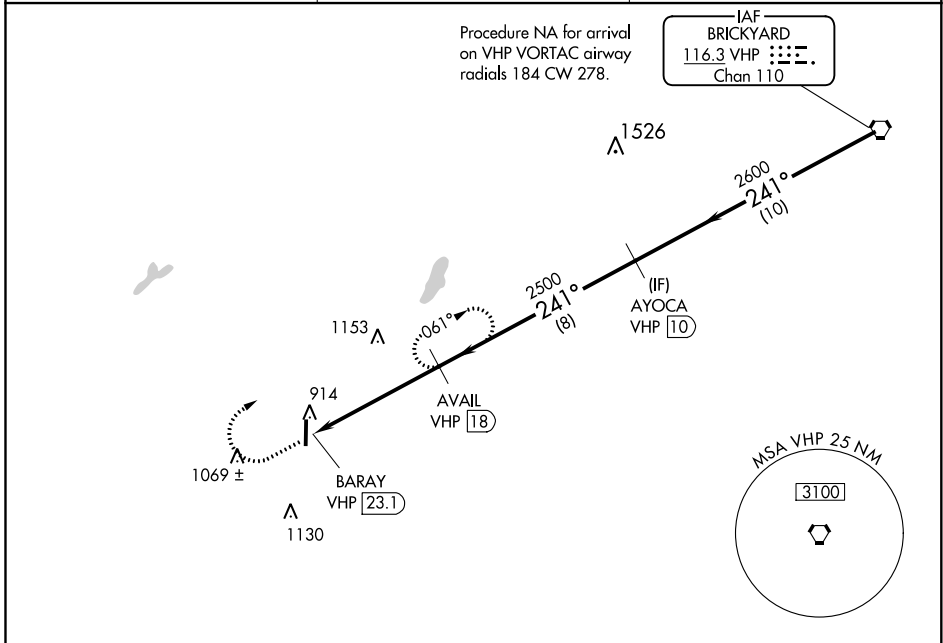
20310

VORTAC VHP 116.3 Chan 110	APP CRS 241°	Rwy Idg TDZE Apt Elev	N/A N/A 842
---	------------------------	-----------------------------	--

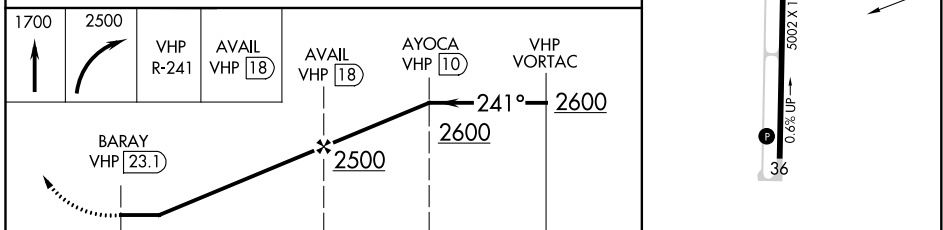
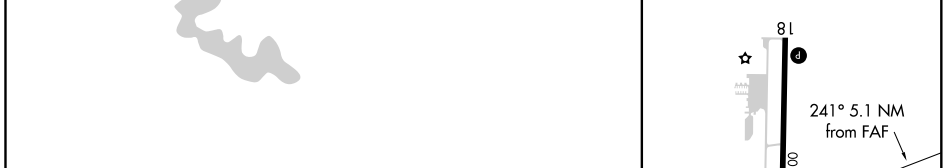
VOR-A
PUTNAM COUNTY RGNL (GPC)

▼ DME required.	MISSED APPROACH: Climb to 1700 then climbing right turn to 2500 on VHP VORTAC R-241 to AVAIL/18 DME and hold.
------------------------	---

AWOS-3PT 118.125	INDIANAPOLIS APP CON 119.05 317.8	UNICOM 122.8 (CTAF) 0
----------------------------	---	--



ELEV 842



CATEGORY	A	B	C	D	MRL Rwy 18-36 REIL Rwy 18
C CIRCLING	1420-1	578 (600-1)	1480-1¾ 638 (700-1¾)	1480-2 638 (700-2)	0

GREENCASTLE, INDIANA
Amdt 7 05JAN17

39°38'N-86°49'W

PUTNAM COUNTY RGNL (GPC)
VOR-A

EC-2, 19 MAY 2022 to 16 JUN 2022

EC-2, 19 MAY 2022 to 16 JUN 2022