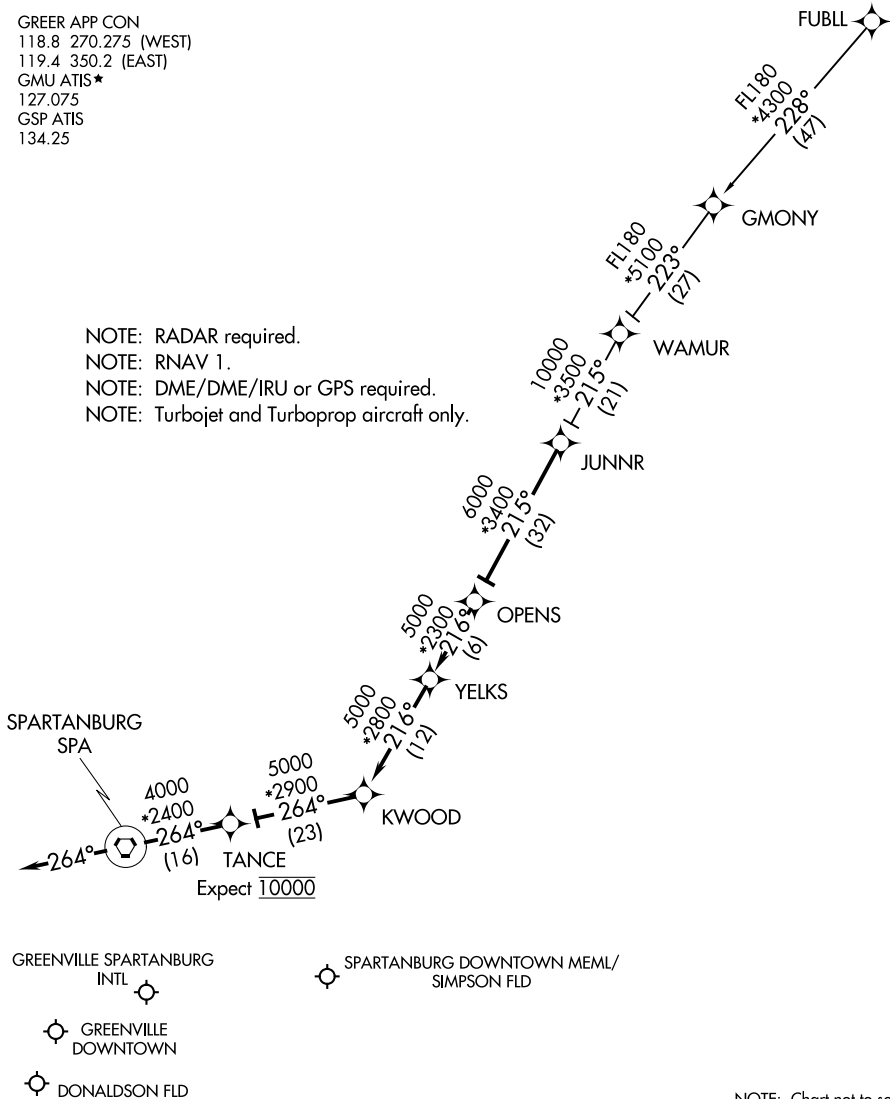


JUNNR THREE ARRIVAL (RNAV)

GREER, SOUTH CAROLINA

GREER APP CON
 118.8 270.275 (WEST)
 119.4 350.2 (EAST)
 GMU ATIS★
 127.075
 GSP ATIS
 134.25

NOTE: RADAR required.
 NOTE: RNAV 1.
 NOTE: DME/DME/IRU or GPS required.
 NOTE: Turbojet and Turboprop aircraft only.



SE-2, 22 FEB 2024 to 21 MAR 2024

SE-2, 22 FEB 2024 to 21 MAR 2024

NOTE: Chart not to scale.

ARRIVAL ROUTE DESCRIPTION

FUBLL TRANSITION (FUBLL.JUNNR3)

From JUNNR on track 215° to OPENS, then on track 216° to YELKS, then on track 216° to KWOOD, then on track 264° to TANCE, then on track 264° to SPA VORTAC, then on heading 264° or as assigned by ATC. Expect RADAR vectors to final approach course.

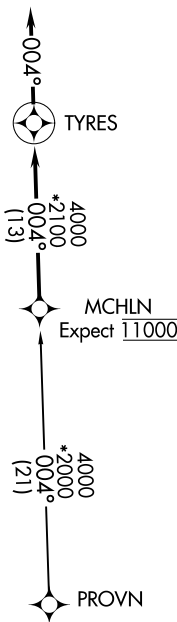
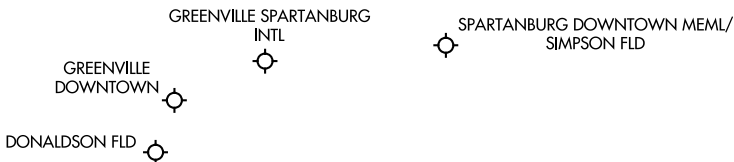
JUNNR THREE ARRIVAL (RNAV)

GREER, SOUTH CAROLINA

MCHLN TWO ARRIVAL (RNAV)

GREER, SOUTH CAROLINA

GREER APP CON
 118.8 270.275 (WEST)
 119.4 350.2 (EAST)
 GMU ATIS *
 127.075
 GSP ATIS
 134.25



- NOTE: RADAR required.
- NOTE: RNAV 1.
- NOTE: DME/DME/IRU or GPS required.
- NOTE: Turbojet and Turboprop aircraft only.

NOTE: Chart not to scale.

ARRIVAL ROUTE DESCRIPTION

PROVN TRANSITION (PROVN.MCHLN2)

From MCHLN on track 004° to TYRES, then on heading 004°. Expect RADAR vectors to final approach course.

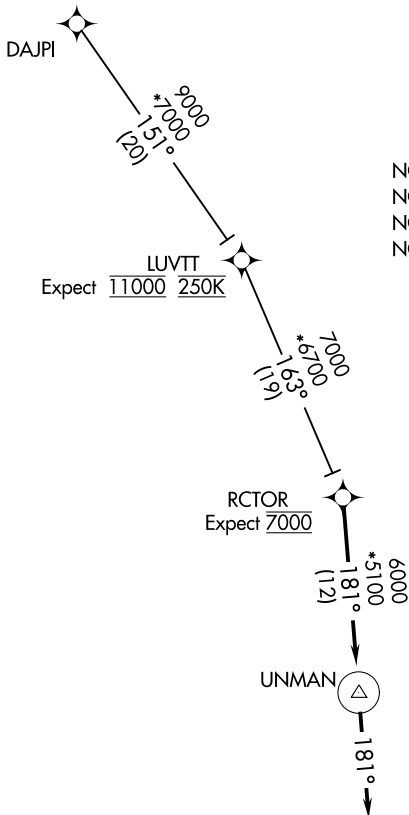
MCHLN TWO ARRIVAL (RNAV)

GREER, SOUTH CAROLINA

RCTOR TWO ARRIVAL (RNAV)

GREER, SOUTH CAROLINA

GREER APP CON
 118.8 270.275 (WEST)
 119.4 350.2 (EAST)
 GMU ATIS ★
 127.075
 GSP ATIS
 134.25



NOTE: RADAR required.
 NOTE: RNAV 1.
 NOTE: DME/DME/IRU or GPS required.
 NOTE: Turbojet and Turboprop aircraft only.

SE-2, 22 FEB 2024 to 21 MAR 2024

SE-2, 22 FEB 2024 to 21 MAR 2024

NOTE: Chart not to scale.

ARRIVAL ROUTE DESCRIPTION

DAJPI TRANSITION (DAJPI.RCTOR2)

From RCTOR on track 181° to UNMAN, then on heading 181°. Expect RADAR vectors to final approach course.

RCTOR TWO ARRIVAL (RNAV)

GREER, SOUTH CAROLINA

WORXS TWO ARRIVAL (RNAV)
(WORXS.WORXS2) 25APR19

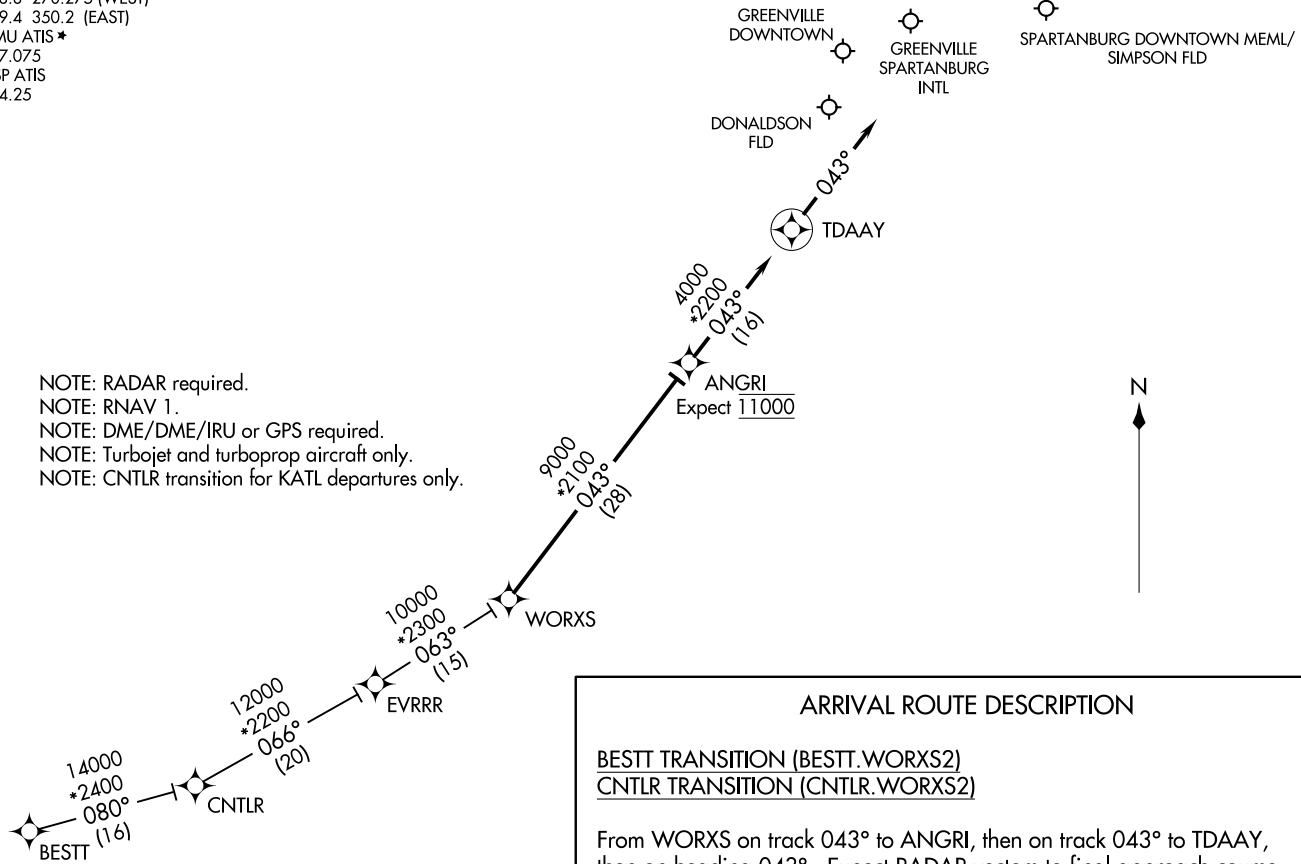
(WORXS.WORXS2) 23222
WORXS TWO ARRIVAL (RNAV)

AL-5124 (FAA)

GREER, SOUTH CAROLINA

GREER APP CON
118.8 270.275 (WEST)
119.4 350.2 (EAST)
GMU ATIS *
127.075
GSP ATIS
134.25

NOTE: RADAR required.
NOTE: RNAV 1.
NOTE: DME/DME/IRU or GPS required.
NOTE: Turbojet and turboprop aircraft only.
NOTE: CNTLR transition for KATL departures only.



NOTE: Chart not to scale.

ARRIVAL ROUTE DESCRIPTION

BESTT TRANSITION (BESTT.WORXS2)
CNTLR TRANSITION (CNTLR.WORXS2)

From WORXS on track 043° to ANGRI, then on track 043° to TDAAY, then on heading 043°. Expect RADAR vectors to final approach course.

GREER, SOUTH CAROLINA