

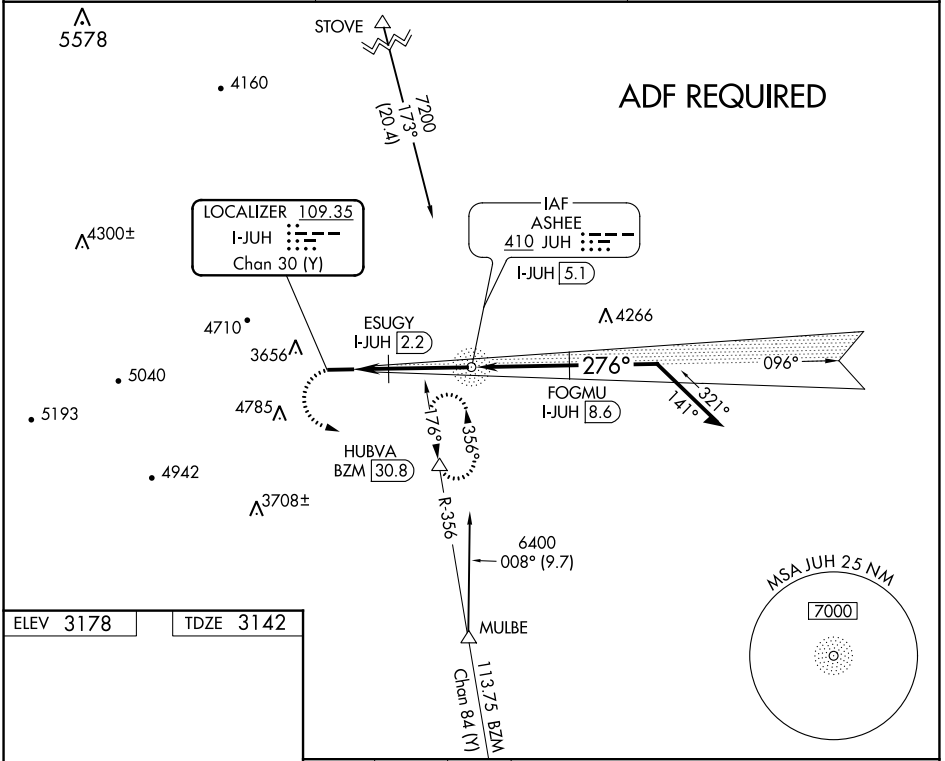
LOC/DME I-JUH 109.35 Chan 30(Y)	APP CRS 276°	Rwy Idg TDZE Apt Elev	5002 3142 3178
---	------------------------	-----------------------------	---

LOC RWY 28
ASHE COUNTY (GEV)

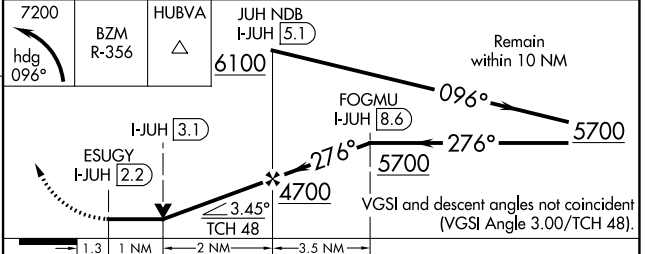
NA Circling Rwy 10 NA at night. DME required. Rwy 28 helicopter visibility reduction below 3/4 SM NA. VDP NA when using Marion/Wytheville altimeter setting. When local altimeter setting not received, use Marion/Wytheville altimeter setting and increase all MDA 160 feet and S-28 Cats C/D visibility 1/2 mile.

MISSED APPROACH: Climbing left turn to 7200 on heading 096° and BZM VOR/DME R-356 to HUBVA/BZM 30.8 DME and hold, continue climb-in-hold to 7200.

AWOS-3 120.675	ATLANTA CENTER 125.15 263.0	UNICOM 122.8 (CTAF) ①
--------------------------	---------------------------------------	---------------------------------



ELEV 3178	TDZE 3142
-----------	-----------



REIL Rwy 28 ①	MIRL Rwy 10-28 ①			
CATEGORY	A	B	C	D
S-28	3860-1 1/2	718 (700-1 1/2)	3860-2	718 (700-2)
① CIRCLING	4240-1 1/2	1062 (1100-1 1/2)	NA	

SE-2, 27 JAN 2022 to 24 FEB 2022

SE-2, 27 JAN 2022 to 24 FEB 2022

WAAS CH 70437 W28A	APP CRS 276°	Rwy Idg TDZE Apt Elev	5002 3142 3178
--	------------------------	-----------------------------	---

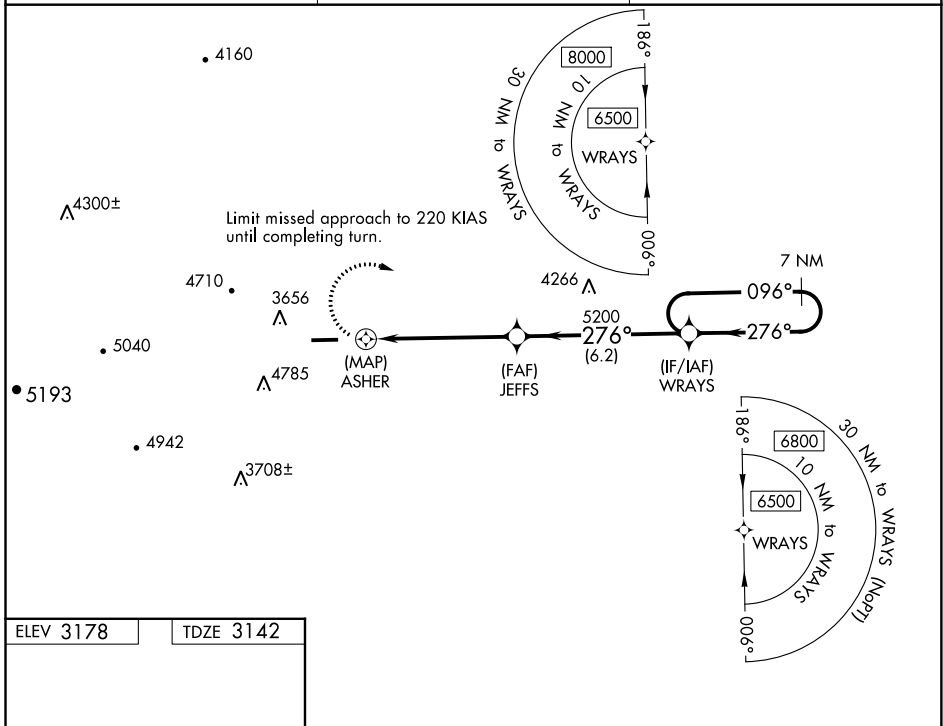
RNAV (GPS) RWY 28

ASHE COUNTY (GEV)

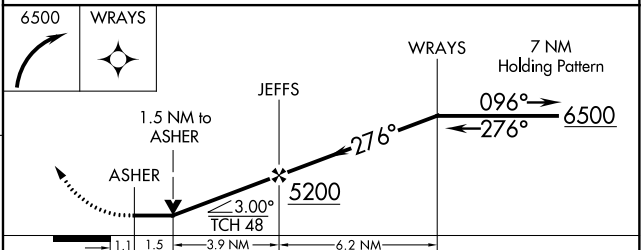
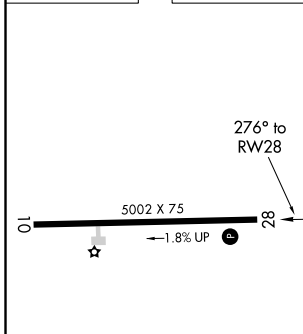
⚠ Circling Rwy 10 NA at night. Circling NA for Cat D north of Rwy 10-28. DME/DME RNP-0.3 NA.
⚠ Rwy 28 helicopter visibility reduction below 3/4 SM NA. VDP NA when using Marion/Wytheville altimeter setting. When local altimeter setting not received, use Marion/Wytheville altimeter setting and increase all MDA 160 feet and LP and LNAV Cat B visibility 1/4 mile and LP and LNAV Cats C/D visibility 1/2 mile. Cats C/D Circling NA when using Marion/Wytheville altimeter setting.

MISSED APPROACH: Climbing right turn to 6500 direct WRAYS and hold.

AWOS-3 120.675	ATLANTA CENTER 125.15 263.0	UNICOM 122.8 (CTAF) 0
--------------------------	---------------------------------------	---------------------------------



ELEV 3178	TDZE 3142
-----------	-----------



CATEGORY		A	B	C	D
LP	MDA	3960-1 1/4	818 (800-1 1/4)	3960-2 1/2	818 (800-2 1/2)
LNAV	MDA	4060-1 1/4	918 (900-1 1/4)	4060-2 1/2	918 (900-2 1/2)
C	CIRCLING	4240-1 1/4 1062 (1100-1 1/4)	4240-1 1/2 1062 (1100-1 1/2)	5140-3	1962 (2000-3)

SE-2, 27 JAN 2022 to 24 FEB 2022

SE-2, 27 JAN 2022 to 24 FEB 2022