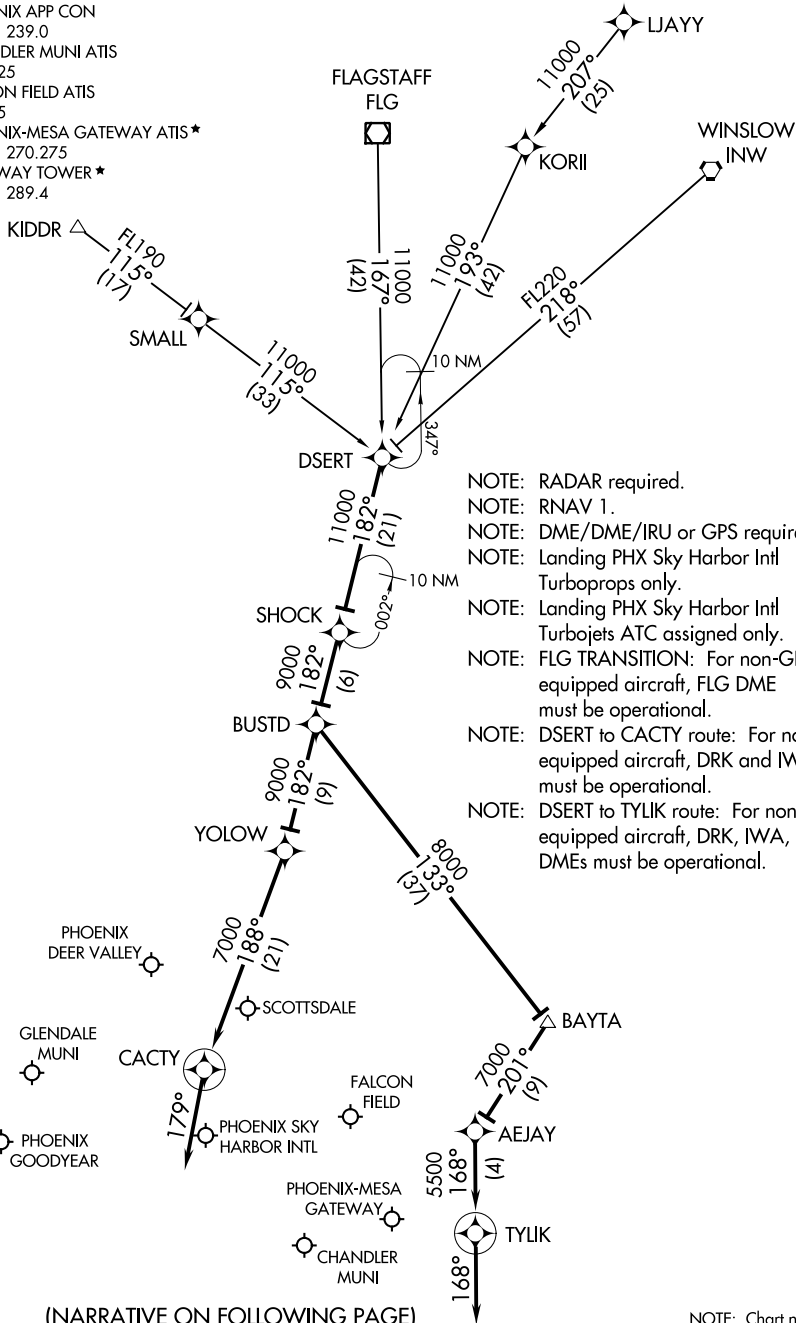


PHOENIX APP CON
 120.7 239.0
 CHANDLER MUNI ATIS
 128.325
 FALCON FIELD ATIS
 118.35
 PHOENIX-MESA GATEWAY ATIS *
 133.5 270.275
 GATEWAY TOWER *
 120.6 289.4



- NOTE: RADAR required.
- NOTE: RNAV 1.
- NOTE: DME/DME/IRU or GPS required.
- NOTE: Landing PHX Sky Harbor Intl Turboprops only.
- NOTE: Landing PHX Sky Harbor Intl Turbojets ATC assigned only.
- NOTE: FLG TRANSITION: For non-GPS equipped aircraft, FLG DME must be operational.
- NOTE: DSERT to CACTY route: For non-GPS equipped aircraft, DRK and IWA DMEs must be operational.
- NOTE: DSERT to TYLIK route: For non-GPS equipped aircraft, DRK, IWA, and PXR DMEs must be operational.

(NARRATIVE ON FOLLOWING PAGE)

NOTE: Chart not to scale.

ARRIVAL ROUTE DESCRIPTION

FLAGSTAFF TRANSITION (FLG.DSERT2)

KIDDR TRANSITION (KIDDR.DSERT2)

LJAYY TRANSITION (LJAYY.DSERT2)

WINSLOW TRANSITION (INW.DSERT2)

From DSERT on track 182° to SHOCK, then on track 182° to BUSTD.

LANDING AT KDVT/KSDL/KGEU/KFFZ/KCHD/KGYR/KPHX:

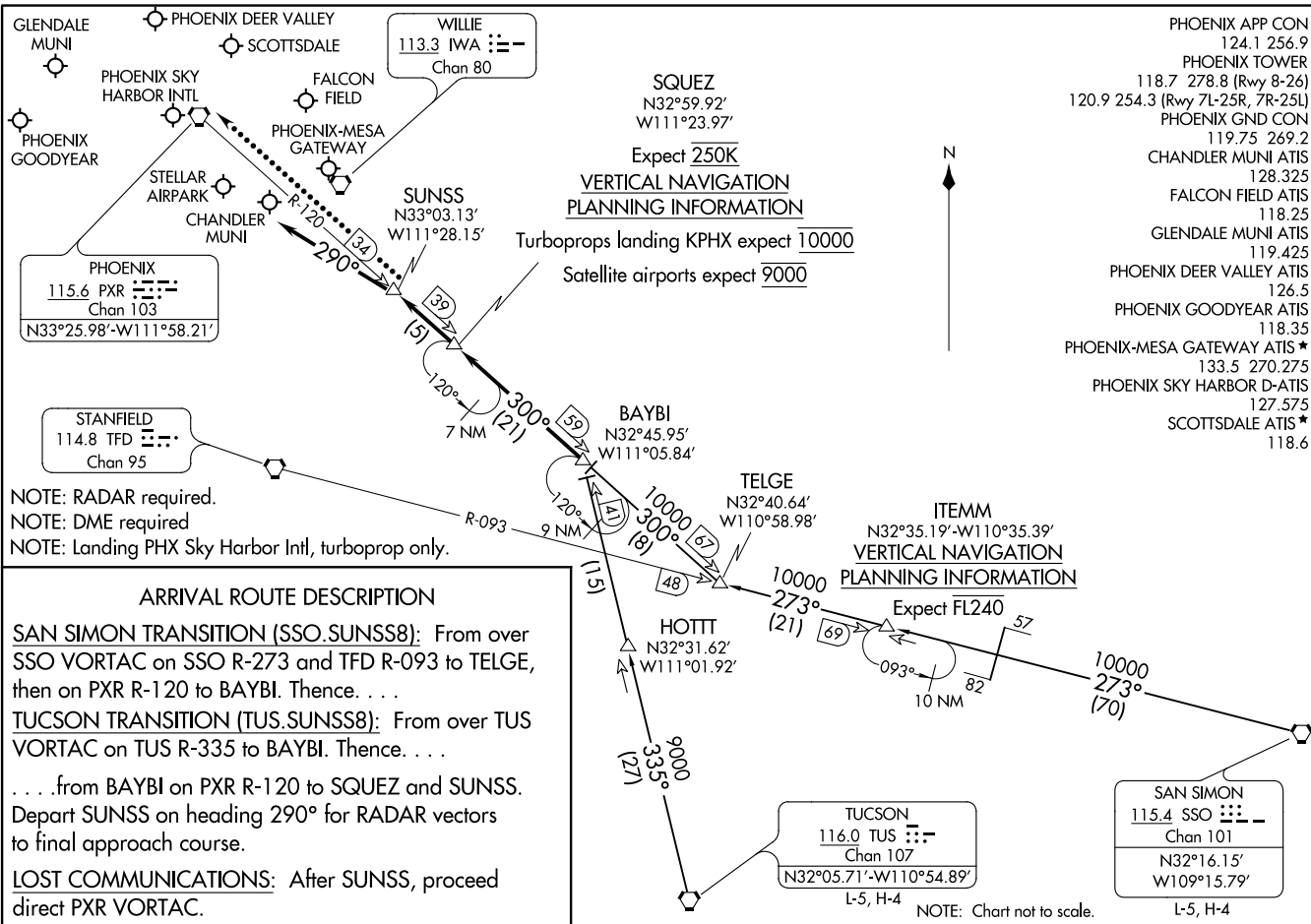
From BUSTD on track 182° to YOLOW, then on track 188° to CACTY then on track 179°. Expect RADAR vectors.

LANDING AT KIWA: From BUSTD on track 133° to BAYTA, then on track 201° to AEJAY, then on track 168° to TYLIK, then on track 168°. Expect RADAR vectors.

SW-4, 13 AUG 2020 to 10 SEP 2020

SW-4, 13 AUG 2020 to 10 SEP 2020

SUNSS EIGHT ARRIVAL
(BAYBI.SUNSS8) 27APR17



PHOENIX
115.6 PXR
Chan 103
N33°25.98'-W111°58.21'

WILLIE
113.3 IWA
Chan 80

SQUEZ
N32°59.92'
W111°23.97'

Expect 250K
VERTICAL NAVIGATION
PLANNING INFORMATION

Turboprops landing KPHX expect 10000
Satellite airports expect 9000

STANFIELD
114.8 TFD
Chan 95

BAYBI
N32°45.95'
W111°05.84'

TELGE
N32°40.64'
W110°58.98'

ITEMM
N32°35.19'-W110°35.39'
VERTICAL NAVIGATION
PLANNING INFORMATION

Expect FL240
273°
(21)

HOTT
N32°31.62'
W111°01.92'

TUCSON
116.0 TUS
Chan 107
N32°05.71'-W110°54.89'
L-5, H-4

SAN SIMON
115.4 SSO
Chan 101
N32°16.15'
W109°15.79'
L-5, H-4

- PHOENIX APP CON 124.1 256.9
- PHOENIX TOWER 118.7 278.8 (Rwy 8-26)
- 120.9 254.3 (Rwy 7L-25R, 7R-25L)
- PHOENIX GND CON 119.75 269.2
- CHANDLER MUNI ATIS 128.325
- FALCON FIELD ATIS 118.25
- GLENDALE MUNI ATIS 119.425
- PHOENIX DEER VALLEY ATIS 126.5
- PHOENIX GOODYEAR ATIS 118.35
- PHOENIX-MESA GATEWAY ATIS ★ 133.5 270.275
- PHOENIX SKY HARBOR D-ATIS 127.575
- SCOTTSDALE ATIS ★ 118.6

NOTE: RADAR required.
NOTE: DME required
NOTE: Landing PHX Sky Harbor Intl, turboprop only.

ARRIVAL ROUTE DESCRIPTION
SAN SIMON TRANSITION (SSO.SUNSS8): From over SSO VORTAC on SSO R-273 and TFD R-093 to TELGE, then on PXR R-120 to BAYBI. Thence. . . .
TUCSON TRANSITION (TUS.SUNSS8): From over TUS VORTAC on TUS R-335 to BAYBI. Thence. . . .
 . . . from BAYBI on PXR R-120 to SQUEZ and SUNSS. Depart SUNSS on heading 290° for RADAR vectors to final approach course.
LOST COMMUNICATIONS: After SUNSS, proceed direct PXR VORTAC.

NOTE: Chart not to scale.

(BAYBI.SUNSS8) 19003
SUNSS EIGHT ARRIVAL

AL-322 (FAA)

PHOENIX, ARIZONA

PHOENIX, ARIZONA