

WAAS CH 90306 W01A	APP CRS 014°	Rwy Idg TDZE Apt Elev	6279 1049 1071
--	------------------------	-----------------------------	---

RNAV (GPS) RWY 1

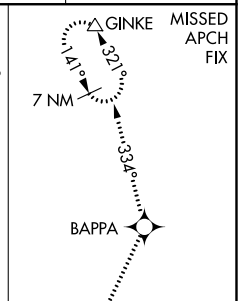
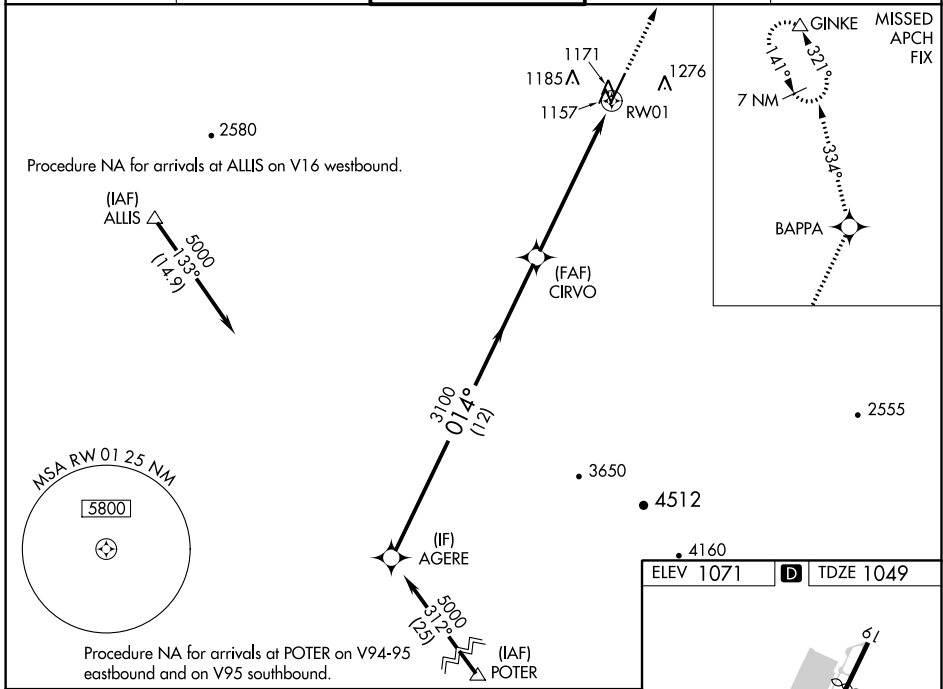
GLENDALE MUNI (GEU)

RNP APCH.

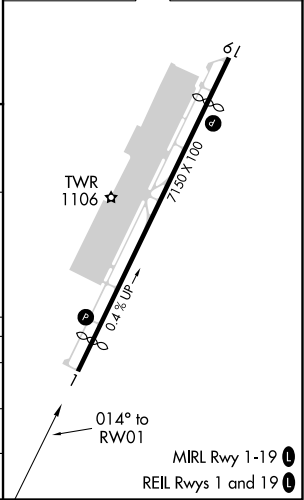
⚠ Baro-VNAV NA when using Phoenix Sky Harbor Intl altimeter setting. For uncompensated Baro-VNAV systems, LNAV/VNAV NA below -17°C or above 47°C. When local altimeter setting not received, use Phoenix Sky Harbor Intl altimeter setting; increase LPV DA to 1438 feet; increase LNAV/VNAV DA to 1517 feet and all visibilities ¼ SM; increase all MDA 60 feet and LNAV Cat C and D visibility ¼ SM. Night landing: Rwy 1, Cat C and D operational VGSi required, remain on or above VGSi glidepath until threshold. Rwy 1 helicopter visibility reduction below ¾ SM NA.

MISSED APPROACH: Climb to 10000 direct BAPPA and on 334° track to GINKE and hold, continue climb-in-hold to 10000.

ATIS 119.425	LUKE APP CON * 118.15 363.125	GLENDALE TOWER * 121.0 (CTAF)	GND CON 118.0	UNICOM 122.95
------------------------	---	---	-------------------------	-------------------------



ELEV 1071	D TDZE 1049
-----------	--------------------



Procedure Turn NA	AGERE	10000	BAPPA	334° tr	GINKE
5000	014°	CIRVO	RWY 1		
GP 3.00°	3100				
TCH 40	12 NM	6.2 NM			
CATEGORY	A	B	C	D	
LPV DA		1378-1¼	329 (400-1¼)		
LNAV/VNAV DA		1457-1½	408 (400-1½)		
LNAV MDA	1440-1	391 (400-1)	1440-1⅛ 391 (400-1⅛)	1440-1¼ 391 (400-1¼)	

SW-4, 13 AUG 2020 to 10 SEP 2020

SW-4, 13 AUG 2020 to 10 SEP 2020

WAAS CH 87004	APP CRS 194°	Rwy Idg TDZE Apt Elev	6115 1065 1071
-------------------------	------------------------	-----------------------------	---

RNAV (GPS) RWY 19

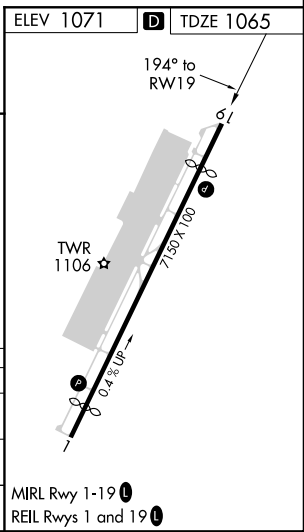
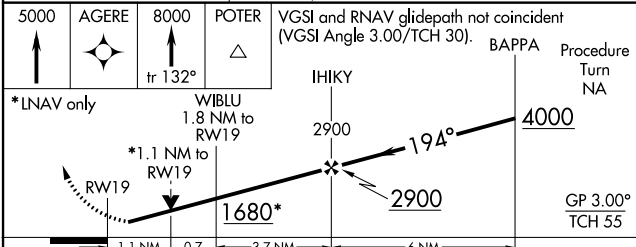
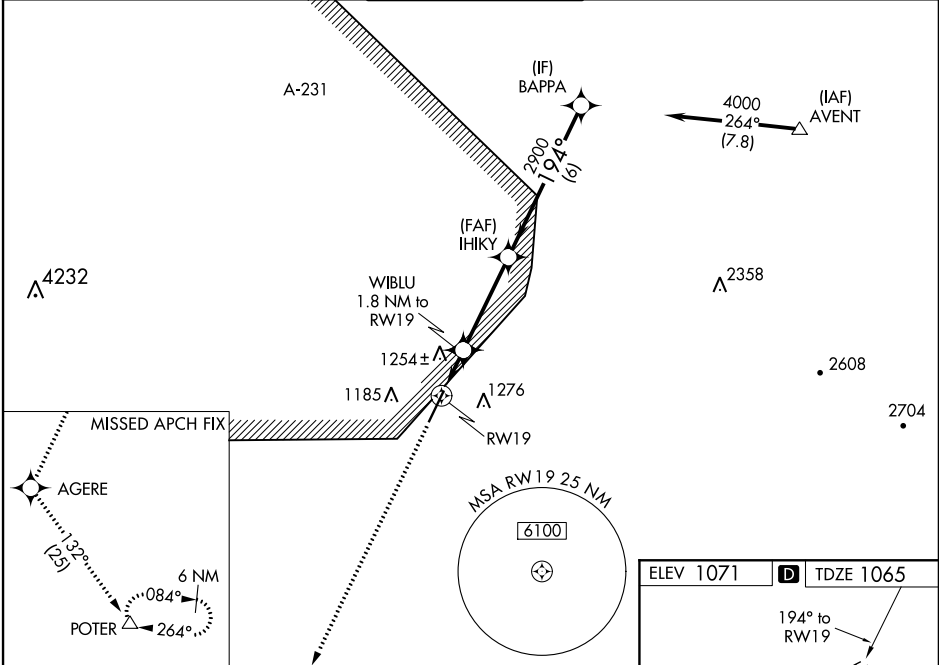
GLENDALE MUNI (GEU)

RNP APCH.

⚠ For uncompensated Baro-VNAV systems, LNAV/VNAV NA below -17°C or above 47°C. Rwy 19 helicopter visibility reduction below 3/4 SM NA. VDP and Baro-VNAV NA when using Phoenix Sky Harbor Inl altimeter setting. When local altimeter setting not received, use Phoenix Sky Harbor Inl altimeter setting: increase LPV DA to 1384 feet; increase LNAV/VNAV DA to 1617 feet and all Cats visibility 1/4 SM; increase all MDA 60 feet and LNAV Cat C and D visibility 1/4 SM.

MISSED APPROACH: Climb to 5000 direct AGERE then climb to 8000 on track 132° to POTER and hold.

ATIS 119.425	LUKE APP CON* 118.15 363.125	GLENDALE TOWER* 121.0 (CTAF)	GND CON 118.0	UNICOM 122.95
------------------------	--	--	-------------------------	-------------------------



CATEGORY	A	B	C	D
LPV DA	1339-1		274 (300-1)	
LNAV/VNAV DA	1572-1 3/4		507 (600-1 3/4)	
LNAV MDA	1540-1	475 (500-1)	1540-1 3/8 475 (500-1 3/8)	1540-1 1/2 475 (500-1 1/2)

SW-4, 13 AUG 2020 to 10 SEP 2020

SW-4, 13 AUG 2020 to 10 SEP 2020