

WAAS CH 69533 W18A	APP CRS 177°	Rwy Idg TDZE Apt Elev	3400 1221 1221
--	------------------------	-----------------------------	---

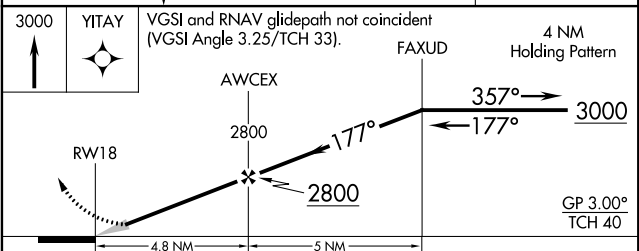
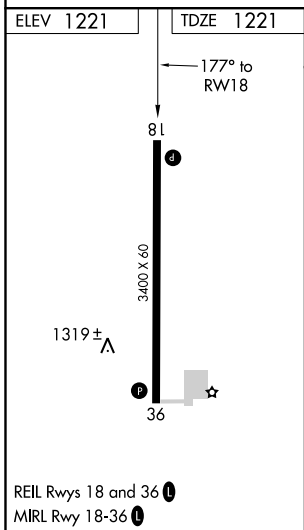
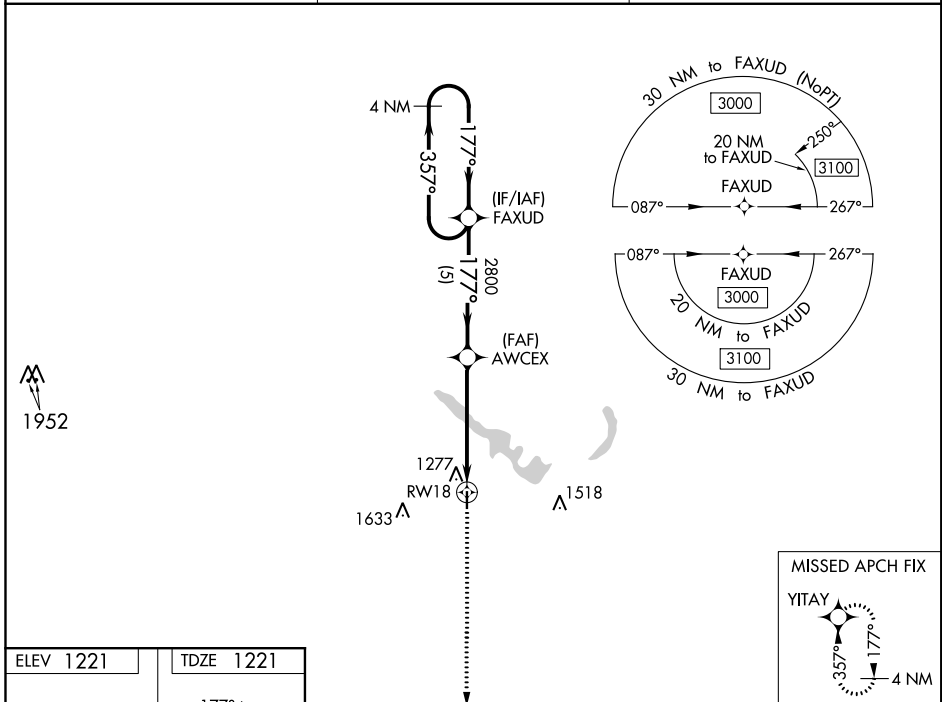
RNAV (GPS) RWY 18

GUTHRIE COUNTY RGNL (GCT)

Baro-VNAV NA. DME/DME RNP-0.3 NA. Use Audubon altimeter setting; when not received, use Carroll altimeter setting and increase LPV DA to 1535, LNAV/VNAV DA to 1748 and all MDA 20 feet; increase LNAV/VNAV all Cats visibility 1/8 mile.

MISSED APPROACH: Climb to 3000 direct YITAY and hold.

ADU AWOS-3 118.075	DES MOINES APP CON 135.2 360.7	UNICOM 122.8 (CTAF)
------------------------------	--	-------------------------------



CATEGORY	A	B	C	D
LPV DA	1531-1	310 (400-1)		NA
LNAV/VNAV DA	1744-1¾	523 (600-1¾)		NA
LNAV MDA	1720-1	499 (500-1)		NA
C CIRCLING	1740-1 519 (600-1)	1880-1 659 (700-1)		NA

NC-3, 18 JUN 2020 to 16 JUL 2020

NC-3, 18 JUN 2020 to 16 JUL 2020

WAAS CH 49233 W36A	APP CRS 357°	Rwy Idg TDZE Apt Elev	3400 1220 1221
--	------------------------	-----------------------------	---

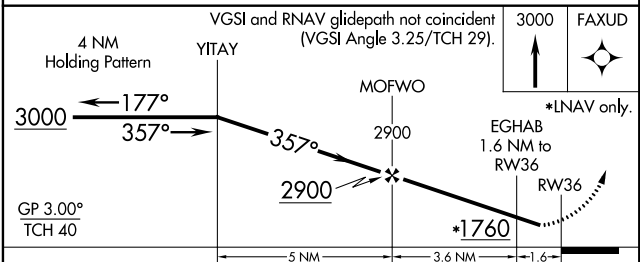
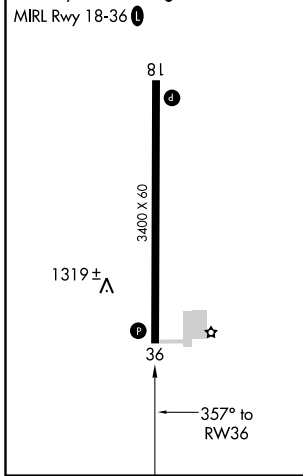
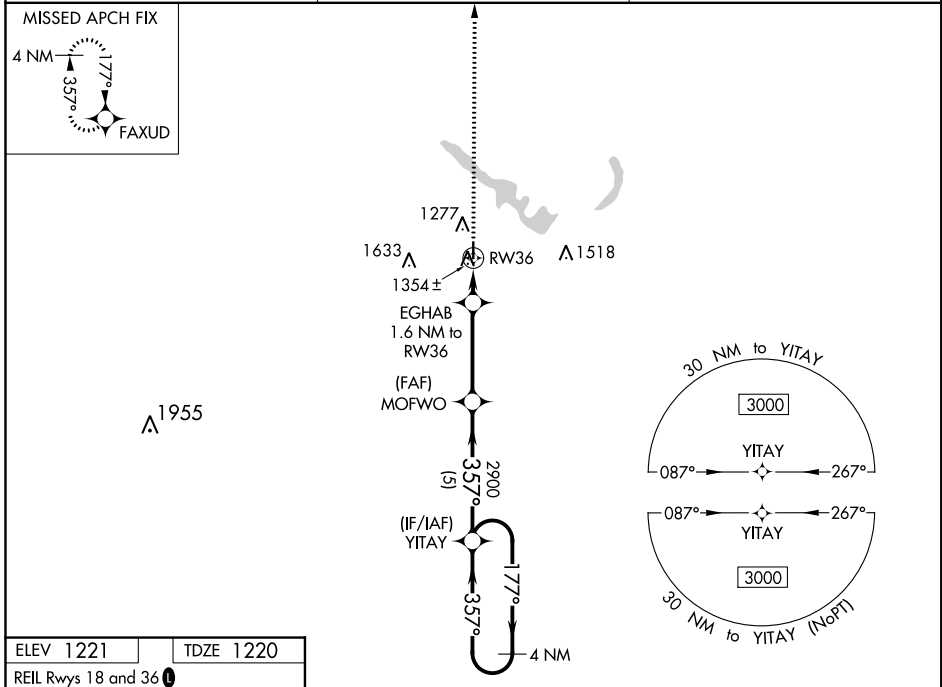
RNAV (GPS) RWY 36

GUTHRIE COUNTY RGNL (GCT)

NA Baro-VNAV NA. DME/DME RNP-0.3 NA. Use Audubon altimeter setting; when not received, use Carroll altimeter setting and increase LPV DA to 1533, LNAV/VNAV DA to 1580, and all MDA 20 feet. Helicopter visibility reduction below 3/4 SM NA.

MISSED APPROACH: Climb to 3000 direct FAXUD and hold.

ADU AWOS-3 118.075	DES MOINES APP CON 135.2 360.7	UNICOM 122.8 (CTAF) 0
------------------------------	--	---------------------------------



CATEGORY	A	B	C	D
LPV DA	1530-1	310 (400-1)		NA
LNAV/VNAV DA	1577-1¼	357 (400-1¼)		NA
LNAV MDA	1680-1	460 (500-1)		NA
C CIRCLING	1740-1 519 (600-1)	1880-1 659 (700-1)		NA