

WAAS CH <b>69533</b> <b>W18A</b>	APP CRS <b>177°</b>	Rwy Idg TDZE Apt Elev	<b>3400</b> <b>1221</b> <b>1221</b>
--	------------------------	-----------------------------	---

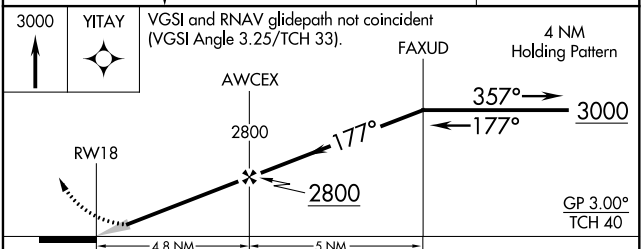
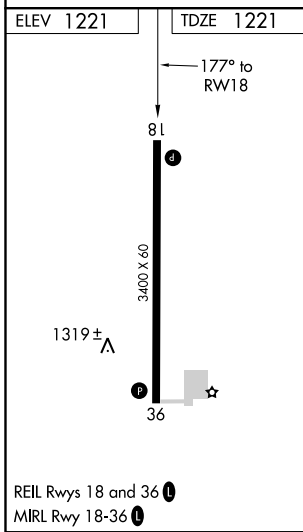
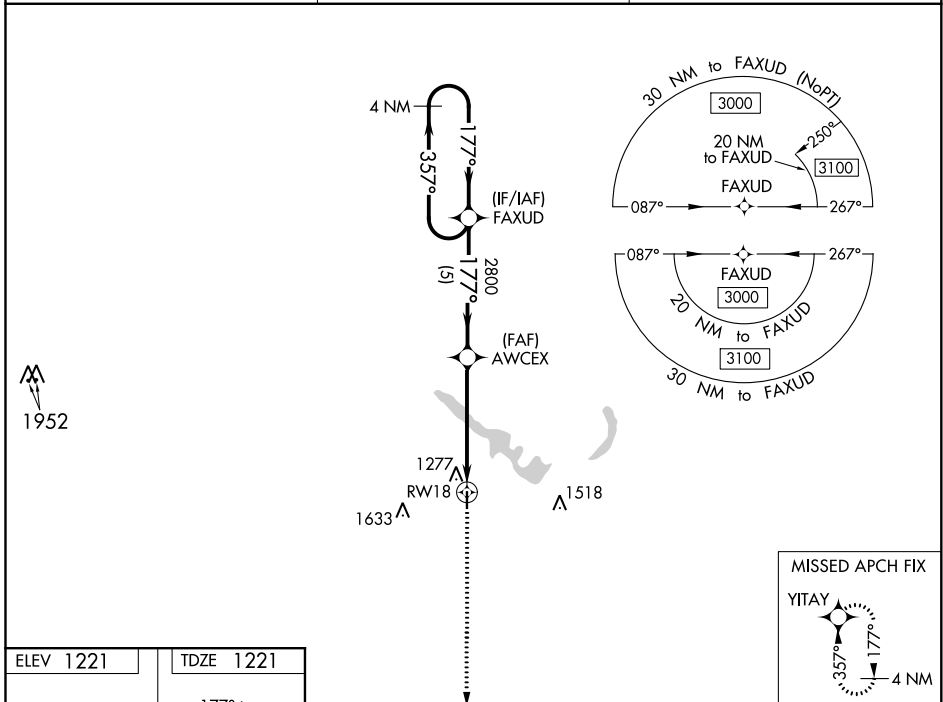
# RNAV (GPS) RWY 18

GUTHRIE COUNTY RGNL (GCT)

**Baro-VNAV NA.** DME/DME RNP-0.3 NA. Use Audubon altimeter setting; when not received, use Carroll altimeter setting and increase LPV DA to 1535, LNAV/VNAV DA to 1748 and all MDA 20 feet; increase LNAV/VNAV all Cats visibility 1/8 mile.

**MISSED APPROACH:** Climb to 3000 direct YITAY and hold.

ADU AWOS-3 <b>118.075</b>	DES MOINES APP CON <b>135.2 360.7</b>	UNICOM <b>122.8</b> (CTAF) <b>1</b>
------------------------------	--	--



CATEGORY	A	B	C	D
LPV DA	1531-1	310 (400-1)		NA
LNAV/VNAV DA	1744-1¾	523 (600-1¾)		NA
LNAV MDA	1720-1	499 (500-1)		NA
<b>C</b> CIRCLING	1740-1 519 (600-1)	1880-1 659 (700-1)		NA

NC-3, 16 JUL 2020 to 13 AUG 2020

NC-3, 16 JUL 2020 to 13 AUG 2020

WAAS CH <b>49233</b> <b>W36A</b>	APP CRS <b>357°</b>	Rwy Idg TDZE Apt Elev	<b>3400</b> <b>1220</b> <b>1221</b>
--	------------------------	-----------------------------	---

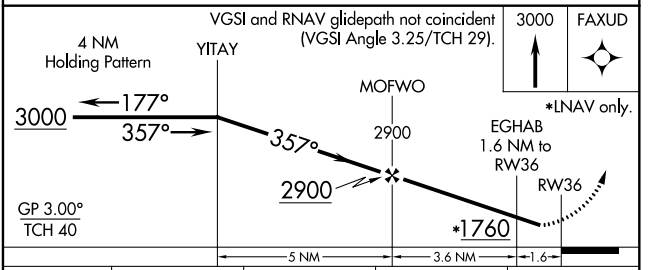
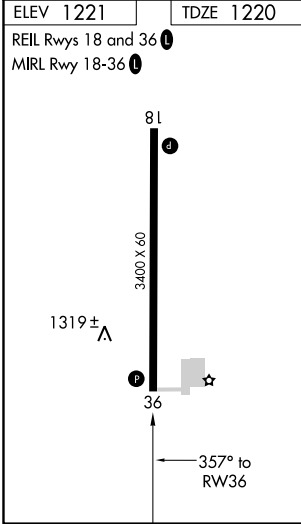
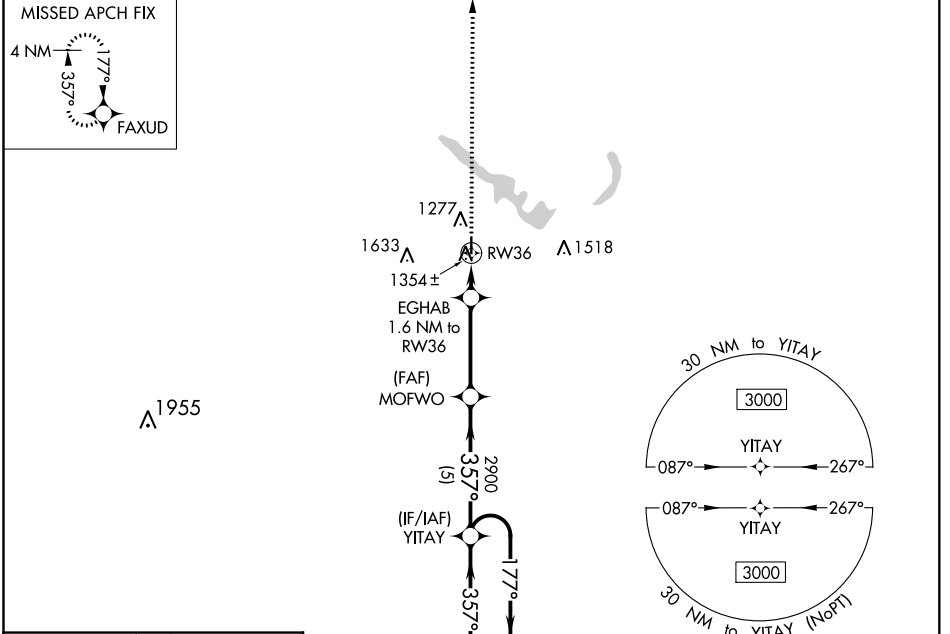
# RNAV (GPS) RWY 36

GUTHRIE COUNTY RGNL (GCT)

**NA** Baro-VNAV NA. DME/DME RNP-0.3 NA. Use Audubon altimeter setting; when not received, use Carroll altimeter setting and increase LPV DA to 1533, LNAV/VNAV DA to 1580, and all MDA 20 feet. Helicopter visibility reduction below ¾ SM NA.

MISSED APPROACH: Climb to 3000 direct FAXUD and hold.

ADU AWOS-3 <b>118.075</b>	DES MOINES APP CON <b>135.2 360.7</b>	UNICOM <b>122.8 (CTAF) 0</b>
------------------------------	--	---------------------------------



CATEGORY	A	B	C	D
LPV DA	1530-1	310 (400-1)		NA
LNAV/VNAV DA	1577-1¼	357 (400-1¼)		NA
LNAV MDA	1680-1	460 (500-1)		NA
<b>C</b> CIRCLING	1740-1 519 (600-1)	1880-1 659 (700-1)		NA

NC-3, 16 JUL 2020 to 13 AUG 2020

NC-3, 16 JUL 2020 to 13 AUG 2020