

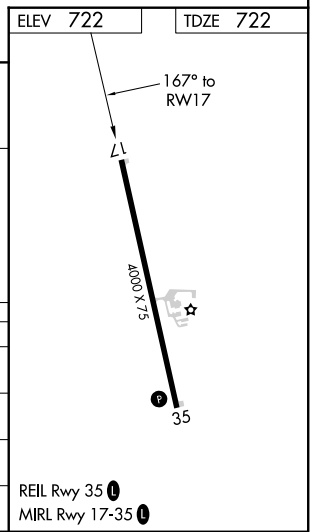
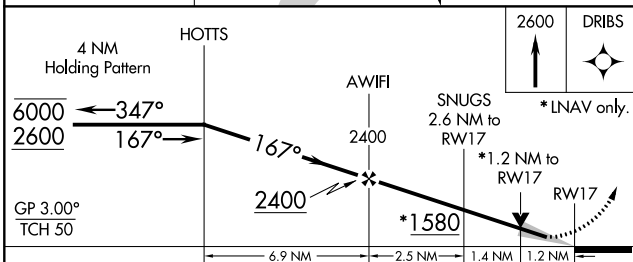
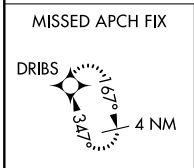
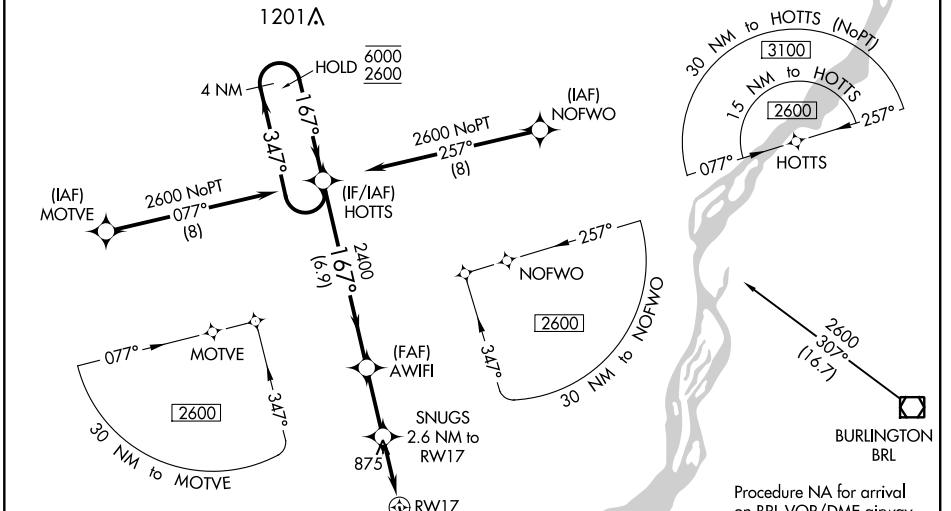
WAAS CH 82641 W17A	APP CRS 167°	Rwy Idg TDZE Apt Elev	4000 722 722
--	------------------------	-----------------------------	---

RNAV (GPS) RWY 17

FORT MADISON MUNI (F'SW)

RNP APCH. ▼ For uncompensated Baro-VNAV systems, LNAV/VNAV NA below -16°C or above 54°C. ▲	MISSED APPROACH: Climb to 2600 direct DRIBS and hold.
--	---

AWOS-3 120.925	CHICAGO CENTER 135.6 316.1	UNICOM 122.8 (CTAF) 0
--------------------------	--------------------------------------	---------------------------------



CATEGORY	A	B	C	D
LPV DA		972-1	250 (300-1)	
LNAV/VNAV DA		972-1	250 (300-1)	
LNAV MDA	1140-1	418 (500-1)	1140-1½	418 (500-1½)
C CIRCLING	1200-1	478 (500-1)	1220-1½	1500-2½
			498 (500-1½)	778 (800-2½)

NC-3, 08 OCT 2020 to 05 NOV 2020

NC-3, 08 OCT 2020 to 05 NOV 2020

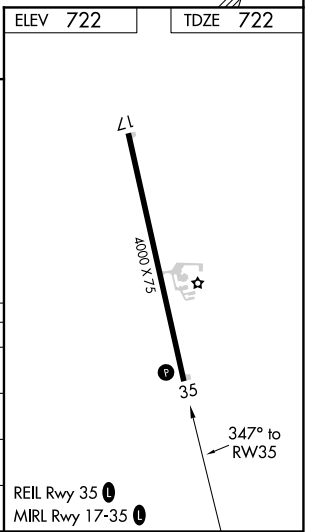
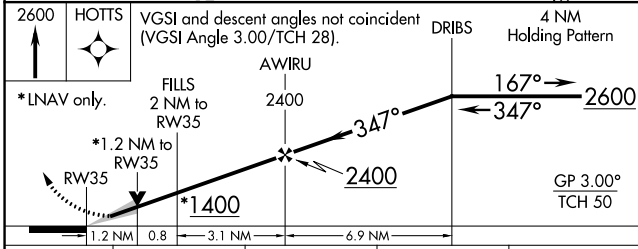
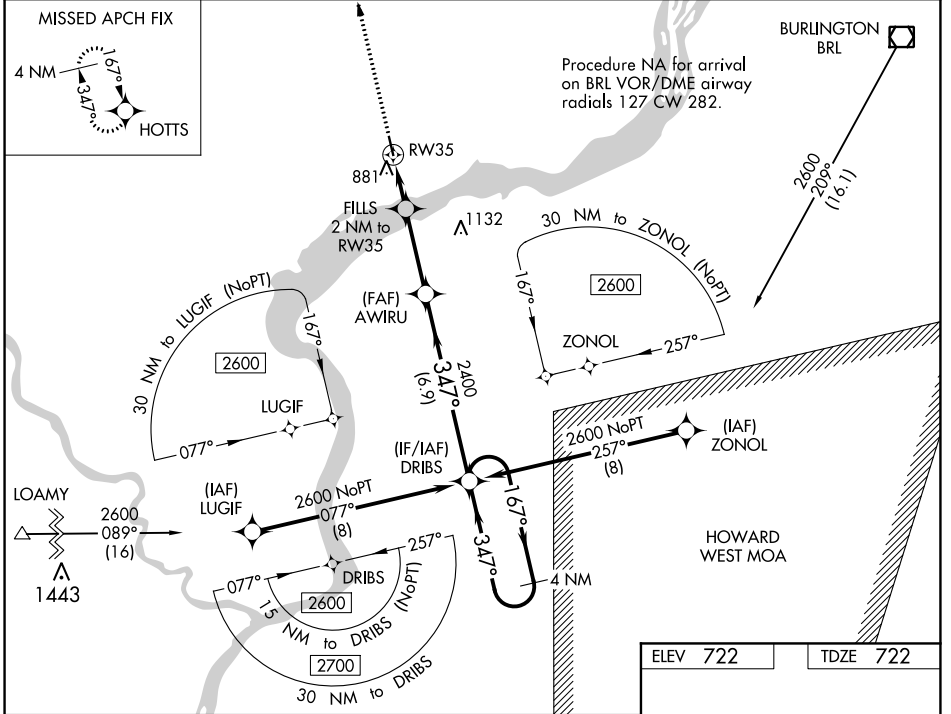
WAAS CH 70741 W35A	APP CRS 347°	Rwy Idg TDZE 722 Apt Elev 722	4000
--	------------------------	---	-------------

RNAV (GPS) RWY 35

FORT MADISON MUNI (F'SW)

RNP APCH.	MISSED APPROACH: Climb to 2600 direct HOTS and hold.
<p>▼ For uncompensated Baro-VNAV systems, LNAV/VNAV NA below -16°C (4°F) ▲ or above 54°C (130°F).</p>	

AWOS-3 120.925	CHICAGO CENTER 135.6 316.1	UNICOM 122.8 (CTAF) 0
--------------------------	--------------------------------------	---------------------------------



CATEGORY	A	B	C	D
LPV DA	972-1 250 (300-1)			
LNAV/VNAV DA	1158-1¼ 436 (500-1¼)			
LNAV MDA	1140-1 418 (500-1)	1140-1½ 418 (500-1½)		
C CIRCLING	1200-1 478 (500-1)	1220-1½ 498 (500-1½)	1500-2½ 778 (800-2½)	

REIL Rwy 35 **0**
MRL Rwy 17-35 **0**

NC-3, 08 OCT 2020 to 05 NOV 2020

NC-3, 08 OCT 2020 to 05 NOV 2020

VOR/DME BRL 111.4 Chan 51	APP CRS 253°	Rwy Idg TDZE Apt Elev	N/A N/A 722
---	------------------------	-----------------------------	--

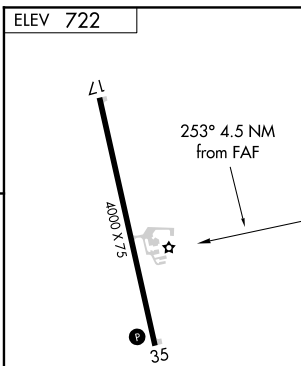
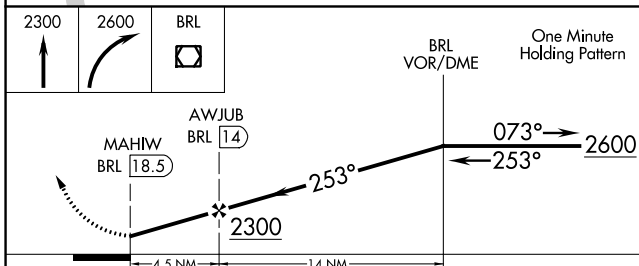
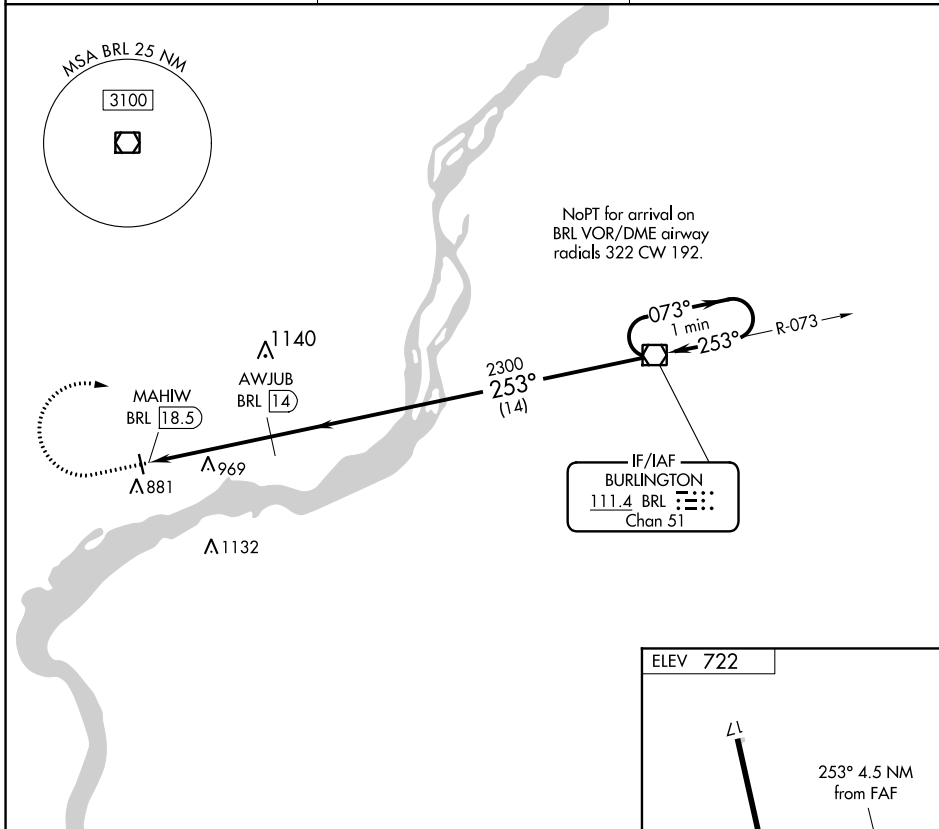
VOR/DME-A

FORT MADISON MUNI (F5W)

⚠ When local altimeter not received, use Burlington altimeter setting; increase all MDA 40 feet and Circling Cat D visibility $\frac{1}{4}$ SM. Visibility reduction by helicopters NA.

MISSED APPROACH: Climb to 2300 then climbing right turn to 2600 direct BRL VOR/DME and hold.

AWOS-3 120.925	CHICAGO CENTER 135.6 316.1	UNICOM 122.8 (CTAF) Ⓛ
--------------------------	--------------------------------------	--



CATEGORY	A	B	C	D
ⓐ CIRCLING	1220-1	498 (500-1)	1220-1½ 498 (500-1½)	1500-2½ 778 (800-2½)

REIL Rwy 35 **Ⓛ**
MIRL Rwy 17-35 **Ⓛ**

NC-3, 08 OCT 2020 to 05 NOV 2020

NC-3, 08 OCT 2020 to 05 NOV 2020